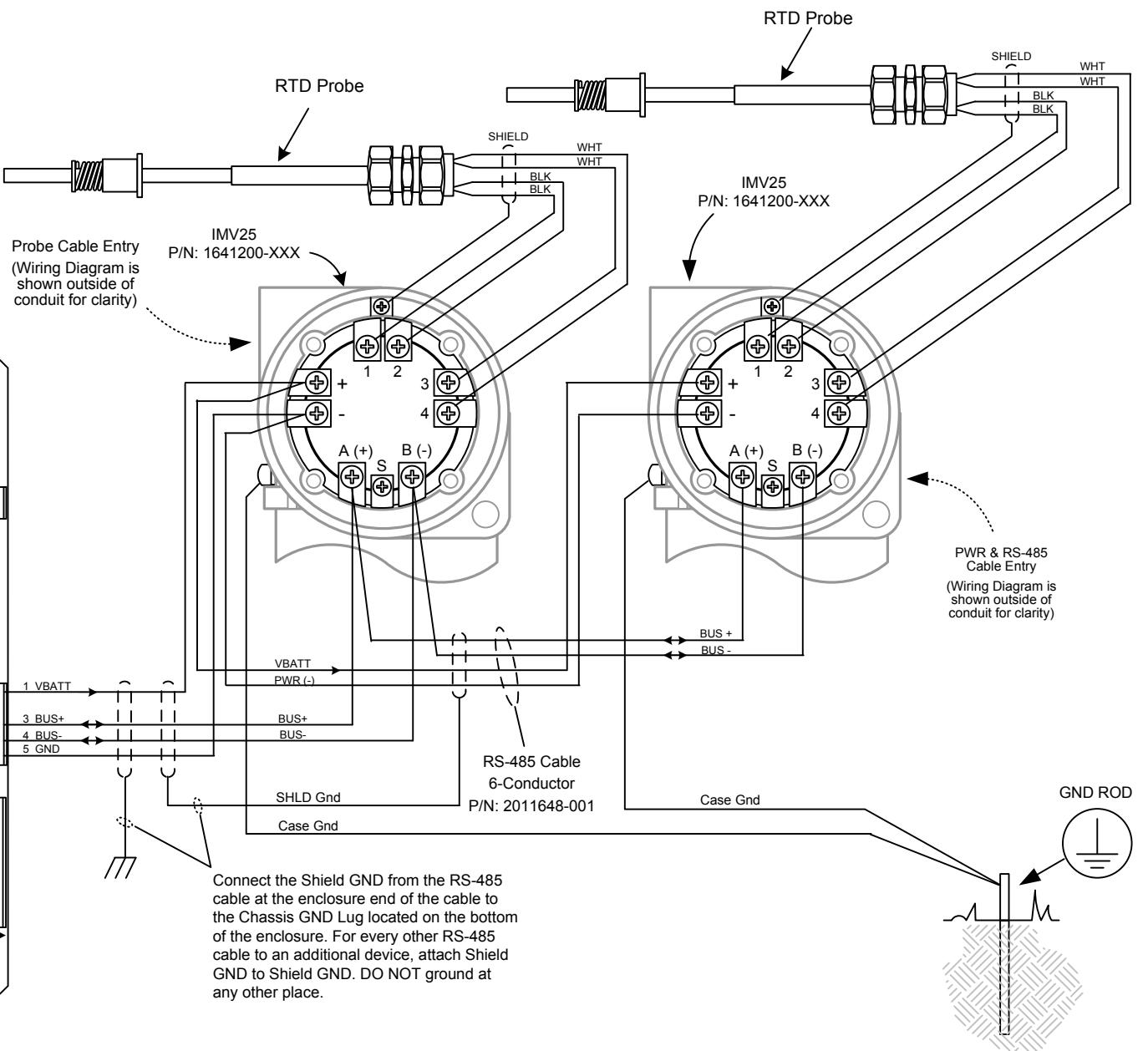
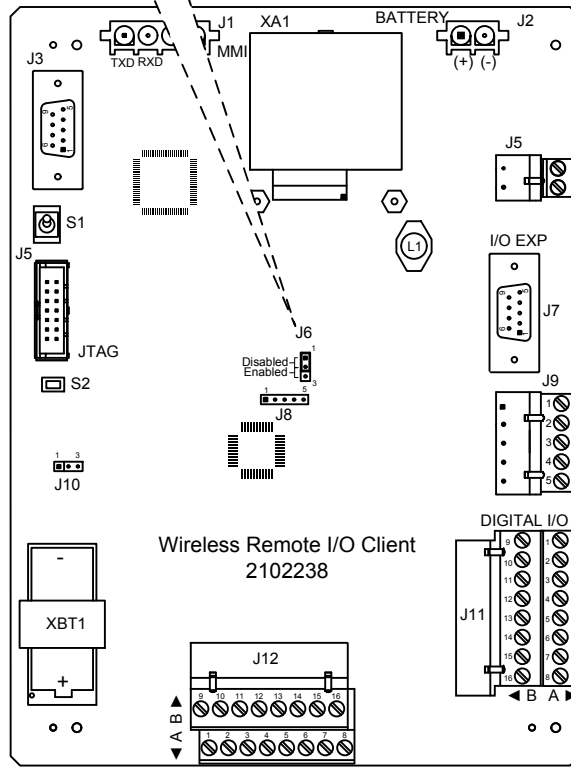
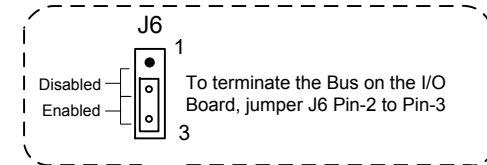


NOTES:

1. **WARNING:** This drawing does not illustrate the installation methods required for hazardous locations. Prior to any installation in a Classified Hazardous Location, verify installation methods by the Control Drawing referenced on the product's name tag and national and local codes.
2. To access the IMV termination board, remove the enclosure rear cover.



Connect the Shield GND from the RS-485 cable at the enclosure end of the cable to the Chassis GND Lug located on the bottom of the enclosure. For every other RS-485 cable to an additional device, attach Shield GND to Shield GND. DO NOT ground at any other place.

3. The RS-485 bus must be wired in a daisy-chain configuration. Star configurations are not allowed.
4. Maximum accumulated length for the RS-485 bus is 4000 feet.

REF: N/A

ABB TOTALFLOW Products	ACTION	DOC TYPE	TITLE	DWG NO.	REV	SHEET
	D24201	UD	WIRELESS REMOTE I/O CLIENT (2102238 BD) TO IMV25 MULTIVARIABLE (1641200) W/RTD PROBE	2104269	AB	1 OF 1