

## Course Description

# PROCONTROL P14

## DE561 E

### Maintenance Basic Course



## Course Goal

The goal of this course is to provide students with an overview of the PROCONTROL P14 system and the operation of the main system components.

## Learning objectives

Upon completion of this course, the students will have a basic understanding of:

- the main system and the interaction of the components
- the principle of the data transmission in the system
- the principle of the signal input and output from and to the process
- the application of the control modules as well as the main function blocks
- the documentation

## Participant profile

Maintenance and service personnel, commissioning personnel

## Prerequisites and Recommendations

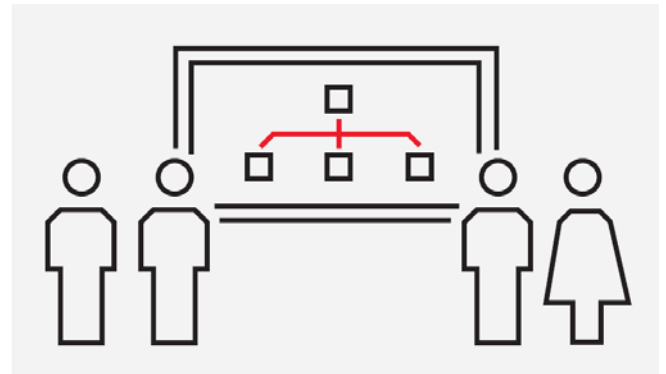
Fundamentals of plant automation and knowledge of modern power plant control systems

## Main Topics

- Basics of PROCONTROL P14:  
*Structure, cubicle, modules, power supply, technical terms*
- Data Transmission:  
*Data flow, telegrams, components*
- Drive Control Modules, Signal Input and Output:  
*Modules, functions*
- Diagnosis Concept:  
*Structure of control system diagnosis*

## Address

ABB AG  
Power Generation  
Kallstadter Straße 1  
D - 68309 Mannheim  
Germany



- Overview Process Operator Station POS30
- Overview Engineering-, Documentation and Service System EDS:  
*Tools and interaction*
- Overview Program-, Diagnosis and Display System (PDDS):
- Overview Control System Diagnostic Station (CDS):
- Documentation:  
*Functional diagrams, system- and module descriptions (examples)*

## Methods

Presentations/Lectures, discussions, demonstrations (no practical exercises)

## Course Duration

3 days

## Contact

Siegmar Hansch  
Phone: +49 621 381 7725  
Fax: +49 621 381 4737  
E-Mail: [siegmar.hansch@de.abb.com](mailto:siegmar.hansch@de.abb.com)  
[www.abb.com](http://www.abb.com)

Course Description

# PROCONTROL P14

## DE561 E

Maintenance Basic Course

