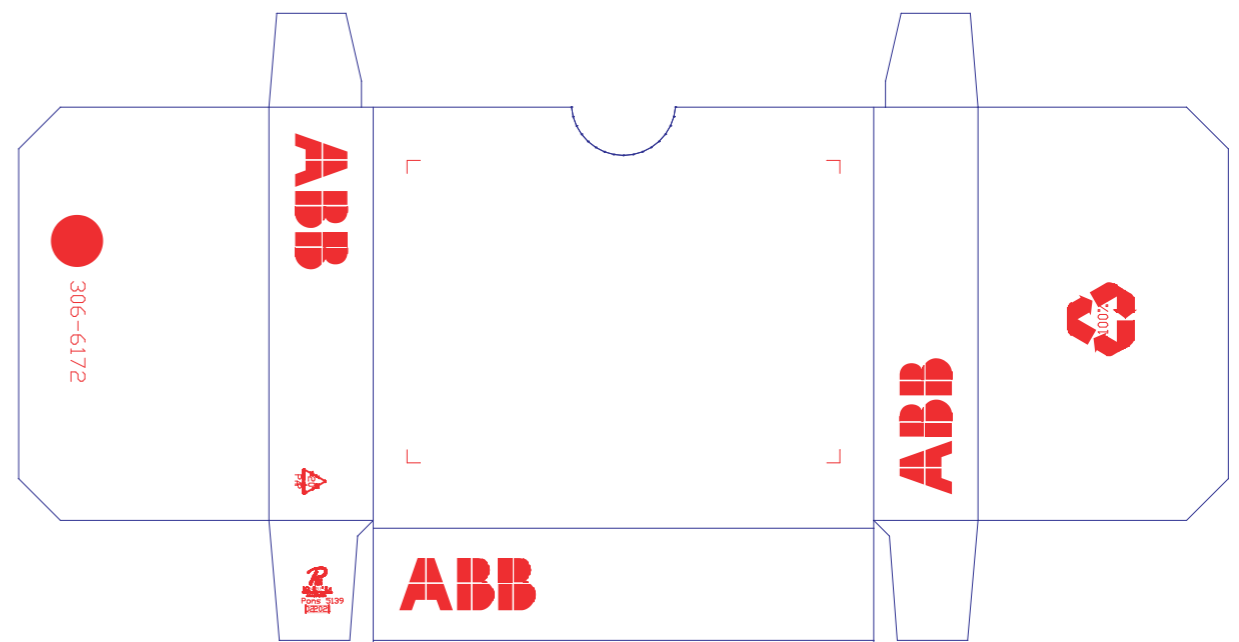


**TEST**

- Ogni sei mesi
- Every six months
- Halbjährlich
- tous les 6 mois
- cada seis meses
- om de 6 maanden
- var sjätte måned
- hver sjette måned
- каждые 6 месяцев
- κάθε 6 μήνες
- Odata la 6 luni
- кожні три місяці
- 每六个月测试一次
- فحص كل ستة أشهر



**ABB**

Warning! Installation by person with  
electrotechnical expertise only.

Warnung! Installation nur durch  
elektrische Fachkraft.

Attenzione! Fare installare solo da un  
elettricista qualificato.

Avertissement! Installation uniquement  
par des personnes qualifiées en  
électrotechnique.

!Advertencia! La instalación deberá ser  
realizada únicamente por electricistas  
especializados.

ULTIMA EMISSIONE LAST ISSUE	E4	2MB15497	30.03.2022	Passarella	Metzi	Chiaravalli	aggiornamenti grafici
PRIMA EMISSIONE FIRST ISSUE	C0	21206	15.03.2012	Colombo	Bottini	Patrino	introdotta tolleranza +/- 0,5 mm su tutte le quote (fog. 1_3)
EDIZIONE EDITION				PROGETTISTA PROJECT DESIGNER	DISEGNATORE DRAWING DESIGNER	CONTROLLATO CHECKED	APPROVATO APPROVAL
				IMPIEGO USING		NOTE NOTE	
				SCALA SCALE	VOLUME VOLUME	The materials used, including (if any) purchased components, coatings, paints, inks and support materials for any assembly operation, shall comply with RoHS directive 2011/65/EC, as amended, on the restriction of certain hazardous substances, and shall fulfil the requirements required in particular in Annexes II - III - IV of the same Directive.	
<b>ABB</b> S.p.A.		ELSB Energy Distribution Building & Home Automation Solutions		DENOMINAZIONE DESCRIPTION			NUMERO DISEGNO DRAWING NUMBER
						SCATOLA RCBO 1P+N 1M	
						03066170 - 6175	
ABB S.p.A. è proprietaria esclusiva del disegno. Vietata la riproduzione per legge. Edizione 06/2019 ABB S.p.A. is exclusive owner of the drawing. Reproduction is prohibited under law. Edition 06/2019							FOGLIO X DI Y SHEET X OF Y