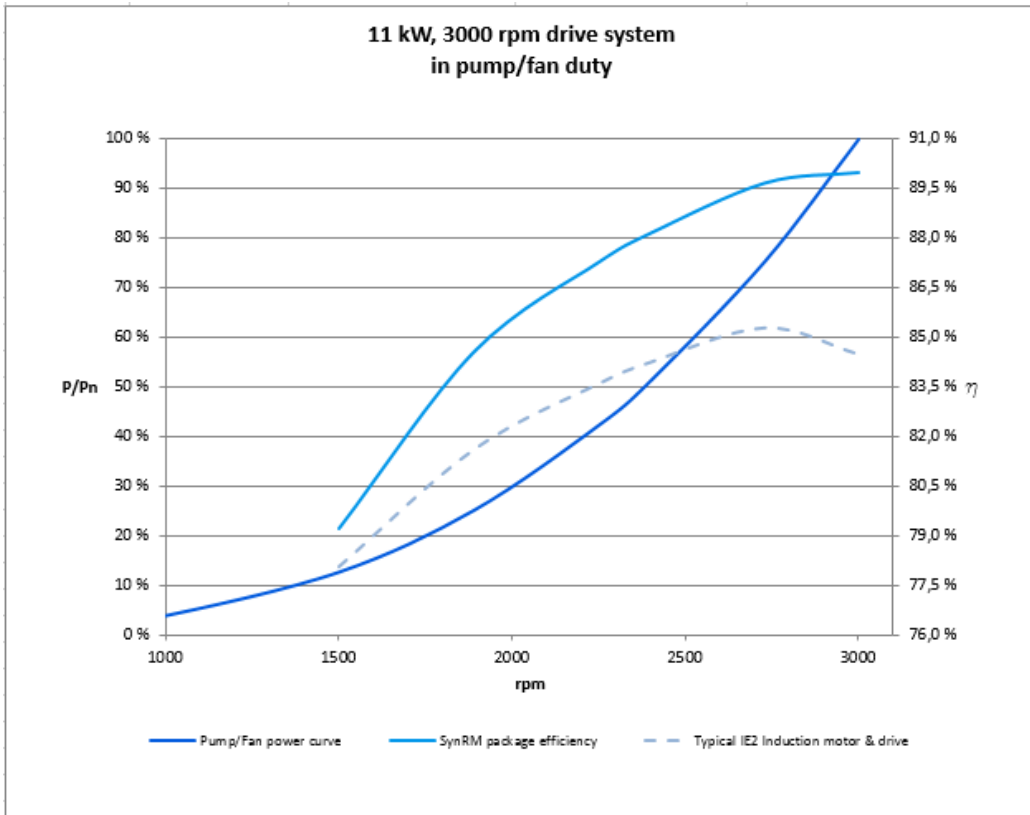


Manufacturer's statement

ACS880-01 and IE4 SynRM motor package efficiency

Drive: ACS880-01-14A3
 Motor: M3AL 132SMA, 3GAL132217-ASC, P_n 5,5 kW, 3000 rpm



Speed	Speed rpm	P/P _n	Package efficiency
50 % **	1500	13 % **	79,2 %
63 %	1890	25 %	84,6 %
75 %	2250	42 %	87,3 %
80 %	2400	51 %	88,2 %
91 %	2730	75 %	89,7 %
100 % **	3000	100 % **	90,0 %

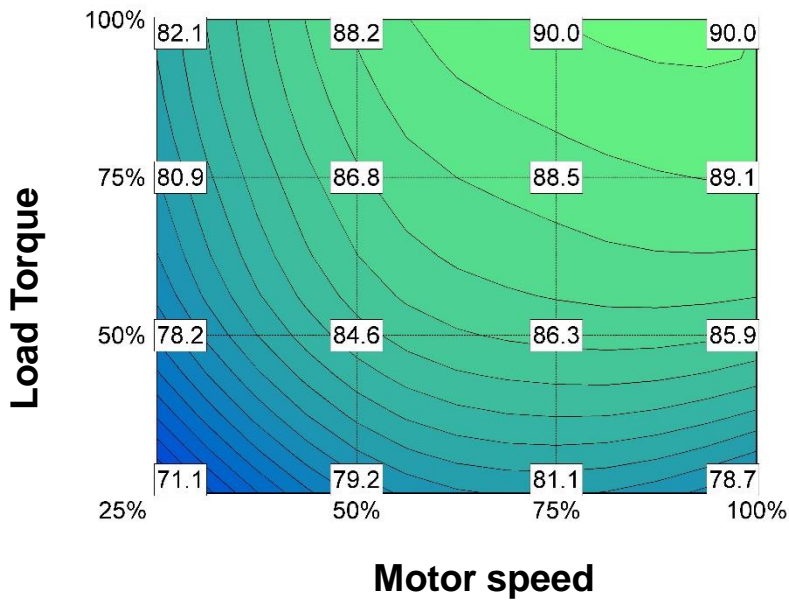
*Estimated tolerance according to IEC 60034-1:

≤150kW: 0.15 x (100 – package efficiency (%) at the nominal point)

>150kW: 0.10 x (100 – package efficiency (%) at the nominal point)

**Measurement point according to EN 50598-2

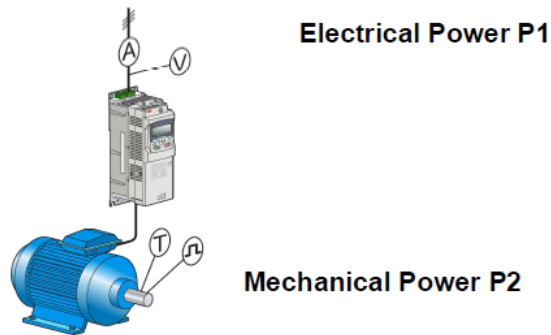
Package efficiency [%] for applications with other load characteristics:



Color scales are comparable within following power ranges:

- 1 to 3 kW
- >3 to 15 kW
- >15 to 350 kW

Points of measurement



$$\text{Efficiency } \eta = P2/P1$$

Efficiency measurements were made at:

ABB verification laboratory, Vaasa	X	ABB verification laboratory, Västerås
ABB verification laboratory, Helsinki		