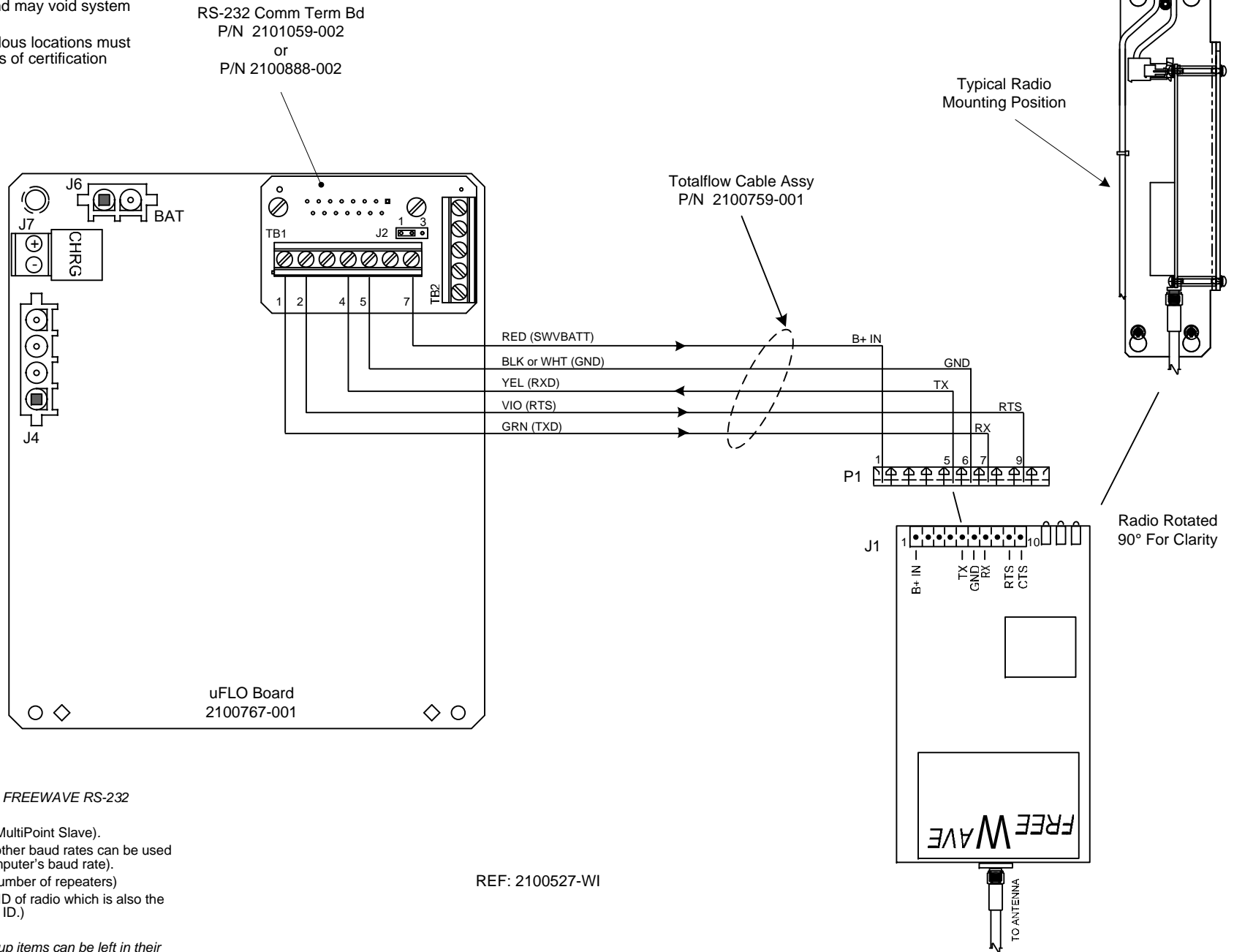


NOTES:

1. WARNING!

Using a non-factory RS232 data cable may result in damage and may void system warranty.

2. All installations in hazardous locations must comply with requirements of certification drawing 2015246-CD.



PRIMARY SETUP ITEMS FOR FREEWAVE RS-232 RADIOS:

1. Modem Mode = 3 (Point to MultiPoint Slave).
2. Modem Baud = 6 (9600) - (other baud rates can be used but needs to match flow computer's baud rate).
3. Number Repeaters (Enter number of repeaters)
4. NetWork ID (Enter address ID of radio which is also the same as the Master Radio's ID.)

Note: Typically, all other setup items can be left in their default state.

REF: 2100527-WI

	TOTALFLOW Products	ACTION	DOC TYPE	TITLE	DWG NO.	REV	SHEET
		D17845	UD	uFLO w/ COMM TERM BD TO FREEWAVE RADIO (RS-232)	2101641	AB	1 OF 1