

SERVICE NOTE

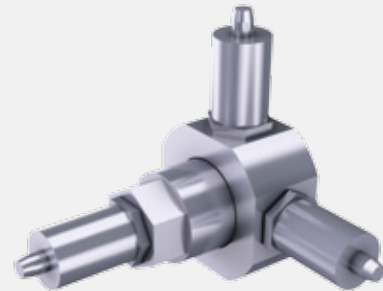
High voltage generators for diesel and gas engines, frame sizes 0710, 0900, 1120, 1250, 1600

Retrofit kit: Vibration sensors



01

01 High voltage generator for diesel and gas engines with vibration sensor
02 Vibration sensor



02

ABB's synchronous generators for diesel and gas engines, type AMG 0710, 0900, 1120, 1250 and 1600, can be retrofitted with sensors to monitor vibration levels on the generator. The sensors are fitted on the bearing shield, using an adapter, to monitor the velocity of movement in the vertical and horizontal directions.

Monitoring the generator's vibration levels is especially useful for detecting bearing wear and other possible problems in the generator. Increasing vibration levels can be an early warning of bearing problems, as well as providing additional information when existing issues are investigated.

The vibration monitoring system is easily installed and does not require any internal changes to the generator. ABB supplies all the necessary materials and documentation. For the best possible results, ABB service engineers are available to provide on-site installation assistance.

Benefits

- Improved generator condition monitoring
- Additional information for maintenance and troubleshooting
- Supports move from reactive to predictive maintenance
- System is easy to install and maintain
- Full manufacturer support

For more information please visit:

new.abb.com/motors-generators/service

We reserve the right to make technical changes or modify the contents of this document without prior notice. With regard to purchase orders, the agreed particulars shall prevail. ABB does not accept any responsibility whatsoever for potential errors or possible lack of information in this document.

We reserve all rights in this document and in the subject matter and illustrations contained therein. Any reproduction, disclosure to third parties or utilization of its contents – in whole or in parts – is forbidden without prior written consent of ABB. Copyright © 2019 ABB. All rights reserved