

125 years of Busch-Jaeger Elektro GmbH

Photographs and captions

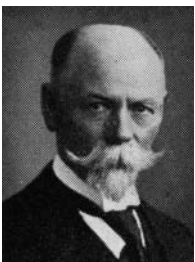


Illustration 1

In 1879 Hans-Curt Jaeger founded a metal works in Lüdenscheid, which initially manufactured simple electric wiring material. In doing so, he laid the foundation-stone for the present-day Busch-Jaeger Elektro GmbH.

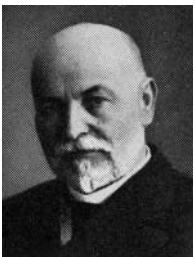


Illustration 2

Georg Jaeger gave his brother significant support in building a factory for electrical engineering items.



Illustration 3

Around 1892, Friedrich Wilhelm Busch specialized in the manufacture of electrical engineering products. He won a world reputation for the Busch eccentric switch.



Illustration 4

The Jaeger brothers started development and production of Swan holders for Edison lamps in 1881. Here is a product they made in 1887.



Illustration 5

The legendary Busch eccentric switch: millions were sold, all over the world.



Illustration 6

Shortly after the turn of the century, one of the first test labs for electrical engineering equipment was installed at the Jaeger Gbrothers' firm. At a very early stage, Hans-Curt had worked to develop safety regulations for handling electrical equipment.



Illustration 7

A "rosette"-type surface-mounted switch made in 1906.



Illustration 8

A surface-mounted toggle switch, typical of the period around 1910.



Illustration 9

A flush-mounted rotary-type switch with glass cover - state of the art in the 1920s.



Illustration 10

The reversible switch: a typical Busch-Jaeger product from 1934.



Illustration 11

From the company history: view of the design studio around 1950.

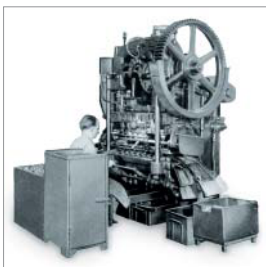


Illustration 12

A progressive press like this was used at Busch-Jaeger to make sockets for filament lamps around 1950.



Illustration 13

The "Perilex" plug - a major contribution to the field of 'safe electrical installation' in 1951.



Illustration 14

Standard equipment in the early 1950s:
a flush-mounted multi-circuit rocker switch from Busch-Jaeger's
"Busch-Duro 2000 ®" range.



Illustration 15

Production-line assembly, 1965: here switch sockets are being assembled for the „Busch-Duro 2000 ®“ range.



Illustration 16

At the 1965 Hannover Trade Fair, Busch-Jaeger unveiled one of the first fluorescent light dimmers for the German market.



Illustration 17

In 1975 Busch-Jaeger introduced „Busch-Duro 2000 ® LX“. This series of switches was to continue in high-volume production for 28 years.



Illustration 18

„Busch-Infoton 2000 ®“ was one of the first flush-mounted intercom systems on the German market in 1978.



Illustration 19

As early as 1981, the „Busch-Timac X-10 ®“ system made Busch-Jaeger a European pioneer in the field of building systems engineering.



Illustration 20

„Busch-Duro 2000® SI“ was launched on the market in 1983, and is the top-selling switch series to date.



Illustration 21

The „Busch-Infoton 2000® baby monitor“ won an award from the goods testing foundation “Stiftung Warentest” in 1986.



Illustration 22

With the 1987 „Busch-Wächter®“ movement detector, Busch-Jaeger Elektro GmbH introduced an intelligent solution for targeted switching of light sources.



Illustration 23

A short-stroke switch from Busch-Jaeger for the automotive industry, seen here in a photograph from 1995.



Illustration 24

For optimum ease of use, safety and cost-effectiveness, Busch-Jaeger introduced the „Busch-Powernet® EIB“ system in 1996, as a further development of „Busch-TimacX-10®“. This is the controller.



Illustration 25

A futuristic design from 2001: the "Busch-triton®" control for "Busch-Powernet® EIB" and "Busch-Installationsbus® EIB", incorporating room temperature control.



Illustration 26

A major contribution to safety: "Busch-Rauchalarm®" smoke alarm from the year 2002.



Illustration 27

Switch production at Lüdenscheid works in 2002.



Illustration 28

In 2003 Busch-Jaeger presented a new generation of movement detectors. Flagship of the series is the "Busch-Wächter® Alarmtech 220".



Illustration 29

A modern building complex: Busch-Jaeger's Lüdenscheid works.



Illustration 30

The modern customer training centre at Busch-Jaeger Elektro GmbH in Lüdenscheid. Featuring ambitious architecture, the complex hosts around 15,000 visitors each year, from home and abroad. They may be finding out about the company's products and services at special events and seminars. They may also be attending a variety of cultural events – ranging from jazz concerts to conferences of external organizations.



Illustration 31

The second production site in Germany: Busch-Jaeger's Aue works.



Illustration 32

New in anniversary year: with its "Room and Control Panel", Busch-Jaeger presents convenient control and detection systems for the "Busch-Installationsbus® EIB" and "Busch-Powernet® EIB". These elegant devices are operated via a touchscreen.



Illustration 33

The brand new "carat" series of switches is one of the outstanding product innovations in the anniversary year. With linear configuration and genuine, premium-quality materials, it sets an exclusive tone.



Illustration 34

One of the new developments unveiled by Busch-Jaeger in its anniversary year is "AudioWorld", a multi-room audio system. Its controls and speaker modules can be incorporated in flush-mounted installations.