



Low Voltage Switches

Low voltage switches
Wide range of high quality switches

Switches for diverse applications

ABB has a wide portfolio of low voltage switches with ratings between 16 and 3150 Amperes. ABB's offering includes diverse fusible and non-fusible solutions suitable for numerous applications.

Switch-disconnectors. The offering includes AC rated switches (manual or motorized) and DC rated switches. Switch disconnectors can be used for example in machinery, power distribution, switchboards, motor control centers or photovoltaic applications.

Switch fuses. Manual or motorized, they are available for all types of fuse links: DIN, BS, NFC, Neozed, UL and CSA. ABB's portfolio includes heavy-duty switch fuses that can be installed close to the main transformer, for example, in heavy industry and ships.

Change-over and transfer switches. ABB offers both motorized and manual change-over switches. The range includes switches to transfer loads from one power source to another manually, remotely or automatically. These types of switches are commonly used in applications with a backup power supply.

Enclosed switches. Switch-disconnectors, change-over switches and switch fuses in plastic, steel or aluminum enclosures. They are used as main switches in industrial, commercial or residential applications.

Cam switches. To be installed in control circuits such as volt- and ammeter circuits, change-over connections, motor starter circuits and as regular on-off switches.



Wide range offering of high quality products

ABB's switches offer a compact solution, superior performance and protection

ABB's offering includes switches that can be operated manually, remotely or automatically. For remote operation, a PLC, a cam switch or push buttons can be used. Automatic operation is possible with a control unit.

A compact solution. Possible thanks to a uniquely short current path and a double-sided spring construction combined with a small amount of components. ABB's switches therefore have a small footprint area, allowing installation in confined spaces.

- ▶ Space savings mean cost reduction

High performance. The switches have a powerful construction that enhances performance. They have high insulation and current ratings. In motorized switches, the motor operators have a wide voltage operation range, making it possible to use the same device in diverse applications.

- ▶ ABB's switches are designed for your application

Safe to use. The design of ABB's switches is based on substantial experience in electrical safety. Safe operation is ensured by all-time reliable position and status indication, prevention of unwanted operation, high protection degree in enclosures and handles and accessories that prevent the contact with live parts.

- ▶ ABB's switches protect people and equipment

Easy to install. ABB's offering includes switches that can be mounted on door, base or DIN-rail. In some of the ranges, it is possible to install the switch in any direction. In addition, there are many cabling options and snap-on mounted accessories, so no tools are needed.

- ▶ Quick and perfect installation every time



Selecting the right switch

To select and configure the products according to your needs, there are three web-tools available in <http://switchselector.com/>. The selection tools are user friendly and rule out wrong selection.

Camweb. To configure standard and customized cam switches. Available in nine languages.

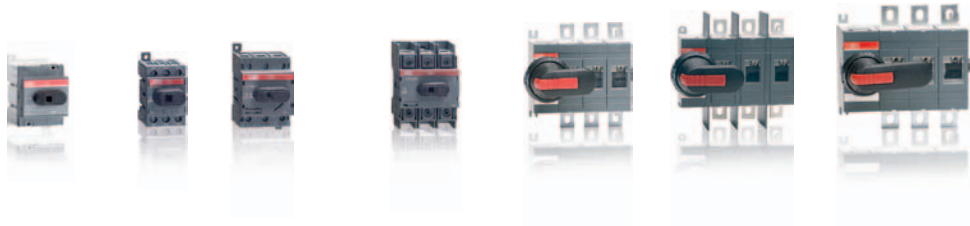
eOT. To select enclosed switches. Available in eight languages

Switches. To select switch-disconnectors, standard and special connected switch fuses. In this tool it is also possible to view accessories. Available in three languages.

Switch-disconnectors 16...3150 Amperes

High performance, compact solution

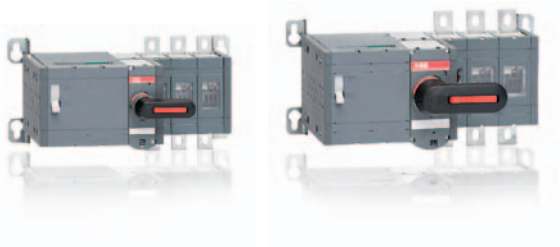
Manual operation



IEC	OTDC16F	OT16F	OT63F	OT100F	OT160EV	OT315E
	OTDC25F	OT25F	OT80F	OT125F	OT200E	OT400E
	OTDC32F	OT40F			OT250E	
UL		OT16F	OT63F	OT30F		OT200U
		OT25F	OT80F	OT60F		
		OT40F		OT100F		

Switch size		16 25 32	16 25 40	63 80	30 60 100 125	160 200 250	200	315 400
IEC	I _{th} [A]	25 32 45	25 32 40	63 80	115 125	160 200 250		315 400
	I _B /AC22A, 415V [A]		16 25 40	63 80	100 125	160 200 250		315 400
	I _B /AC23A, 415V [A]		16 20 23	45 75	80 90	160 200 250		315 400
	I _B /DC21, 660V [A]	16 25 32	16 25 32			160 200 250		
	I _B /DC21, 1000V [A]	16 25 32				160 200 250		315 400
	I _B /DC21, 1200V [A]	16 25 32						
UL	Ampere rating [A]		20 30 40	60 80	30 60 100		200	

Motor operation



IEC	OTM160E	OTM315E
	OTM200E	OTM400E
	OTM250E	

Switch size [A]	160 200 250	315 400
-----------------	-------------	---------

Accessories

Optional handles

Extended shafts

Legend plates

Auxiliary contacts

Fourth poles

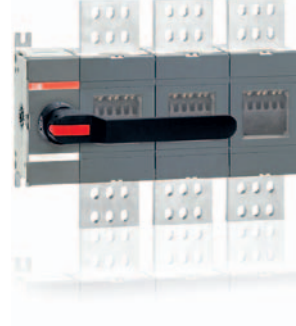
N & PE terminals

Terminal shrouds

Connecting accessories

Conversion kits

Locking accessories



OT630E

OT800E

OT1000E

OT1250E

OT1600E

OT2000E

OT2500E

OETL3150K

OT400U

OT600U

OT800U

OT1200U

OETL-NF1600

OETL-NF2000

400

600 630 800 800 1000 1200 1250 1600

2000 2500

1600 2000 3150

630 800 1000 1250 1600

2000 2500

3150

630 800 1000 1250 1600

2000 2500

630 800 1000 1250 1600

600

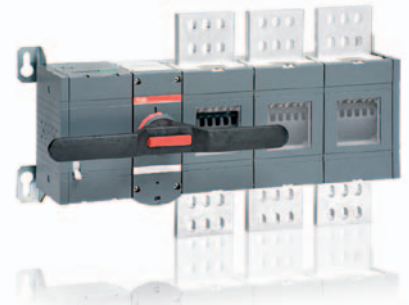
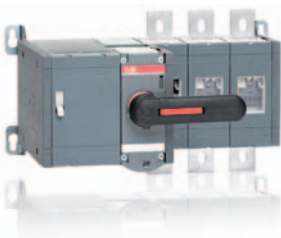
400

600

800

1200

1600 2000



OTM630E

OTM800E

OTM1000E

OTM1250E

OTM1600E

OTM2000E

OTM2500E

630 800

1000 1250

1600







2000 2500

Change-over and transfer switches





16...2500 Amperes

Securing your power supply

Manual operation

<div></div>															
OT16F_C				OT63F_C		OT100F_C		OT160E_C			OT160E_WC			OT315E_C	
OT25F_C				OT80F_C		OT125F_C		OT200E_C			OT200E_WC			OT400E_C	
OT40F_C								OT250E_C			OT250E_WC				
I_{th} /A	25	32	40	63	80	115	125	160	200	250	160	200	250	315	400
I_e /AC-22A, < 415V	16	25	40	63	80	100	125	160	200	250	160	200	250	315	400
I_e /AC-23A, < 415V	16	20	23	45	75	80	90	160	200	250	160	200	250	315	400
I_e /AC-21B, < 415V															


Motor operation


<div></div>																
				OTM40F_C			OTM160E_C			OTM160E_WC			OTM315E_C			
				OTM63F_C			OTM200E_C			OTM200E_WC			OTM400E_C			
				OTM80F_C			OTM250E_C			OTM250E_WC						
				OTM100F_C												
				OTM125F_C												

I_{th} /A	40		63	80	115	125	160			200	250	160			200	250	315		400
I_e /AC-22A, < 415V	40	63	80	100	125		160	200	250			160	200	250			315	400	
I_e /AC-23A, < 415V	40	63	80	80	90		160	200	250			160	200	250			315	400	
I_e /AC-21B, < 415V																			

Automatic operation

Automatic operation





	OTM160E_C_D			OTM160E_WC_D		
	OTM200E_C_D			OTM200E_WC_D		
	OTM250E_C_D			OTM250E_WC_D		
I_{th} /A	160	200	250	160	200	250
I_e /AC-22A, < 415V	160	200	250	160	200	250
I_e /AC-23A, < 415V	160	200	250	160	200	250

Accessories

Optional handles

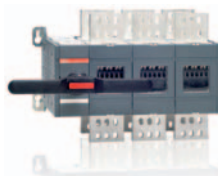
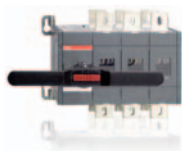
Terminal shrouds

Extended shafts

Connecting accessories

Auxiliary contacts

Locking accessories



OT630E_C
OT800E_C

OT1000E_C
OT1250E_C

OT1600E_C

OT2000E_C
OT2500E_C

630 800

1000 1250

1600

2000 2500

630 800

1000 1250

1600

630 800

1000 1250

1250

2000 2500



OTM630E_C
OTM800E_C

OTM1000E_C
OTM1250E_C

OTM1600E_C

OTM2000E_C
OTM2500E_C

630 800

1000 1250

1600

2000 2500

630 800

1000 1250

1600

630 800

1000 1250

1600

2000 2500



OTM315E_C_D
OTM400E_C_D

OTM630E_C_D
OTM800E_C_D

OTM1000E_C_D
OTM1250E_C_D

OTM1600E_C_D

315 400

630 800

1000 1250

1600

315 400

630 800

1000 1250

1600

315 400

630 800

1000 1250

1250

Switch fuses 16...1250 Amperes

Designed for extreme conditions

Manual operation



DIN	OS16FD	OS40FD	OS32GD	OS125GD
	OS35FD		OS63GD	OS160GD
BS	OS20FB		OS32GB	OS100GB
	OS32FB		OS63GB	OS125GB
				OS160GB
NFC	OS25FF		OS50GF	OS125GF
	OS32FF			
UL/CSA	OS30FACC		OS60GJ	OS100GJ
	OS30FAJ			

	OS Mini							OS							
Switch size [A]	16	20	25	30	32	35	40	32	50	60	63	100	125	160	100
AC23/400 V [kW]	7.5		11		15	15	18.5	15	22		30		55	75	
AC23/415 V [kW]		7.5			15			15			30	55	55	75	
480 V [HP]				15						30					60
600 V [HP]				20						50					75

Motor operation



DIN	OSM32GD	OSM125GD
	OSM63GD	OSM160GD
BS	OSM32GB	OSM100GB
	OSM63GB	OSM125GB
		OSM160GB
NFC	OSM50GF	OSM125GF

	OSM				
Switch size [A]	32	50	63	100	125 160

Accessories

Optional handles

Extended shafts

Auxiliary contacts

Fourth poles

N & PE terminals

Solid links

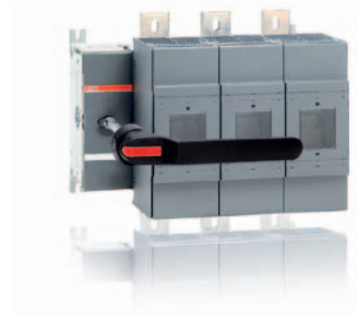
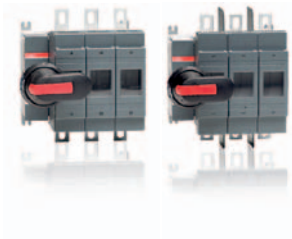
Terminal shrouds

Connecting accessories

Conversion kits

Blown fuse indicators

Locking accessories



OS200D

OS250D

OS200B

OS250B

OS400D

OS315B

OS400B

OS630D

OS800D

OS630B

OS800B

OS1250D

OS1250B

OS200J

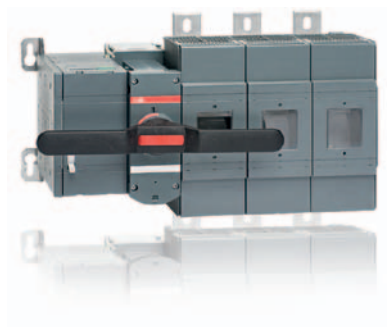
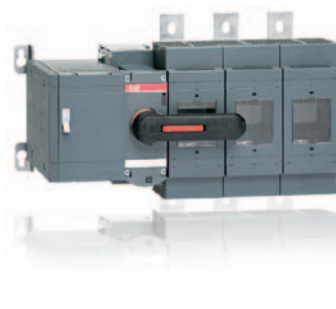
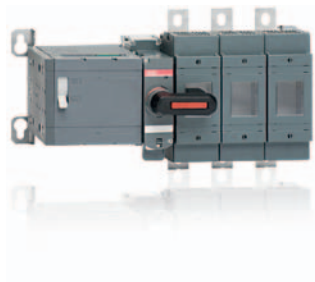
OS400J

OS600J

OS800L

OS1200L

200	250	200	315	400	600	630	800	1200	1250
110	140			230		355	450		560
110	145		180	230		355	450		560
		150		250	400		500	-	
		200		350	500		600	-	



OSM200D

OSM250D

OSM200B

OSM250B

OSM400D

OSM315B

OSM400B

OSM630D

OSM800D

OSM630B

OSM800B

OSM1250D

OSM1250B

200 250

315 400

630 800

1250

Enclosed switches 16...1600 Amperes

Safe and reliable

Plastic

IP65

Black / red-yellow handle types



Side operated

Front operated

Switch-disconnectors from 16 to 800 Amperes

			BW_16..._25	BW_40	BW625...640	OTP16	OTP16...32
Rated operational current,	2-pole	[A]	25*	40*		-	-
AC22A, up to 690V	3-pole	[A]	16* 25*	40*		16	25 40
	4-pole	[A]	25*	40*		-	16 25 40
	6-pole	[A]	-	-	25* 40*	-	16 25 40

Switch fuses, BS / DIN -types from 32 to 400 Amperes

Rated operational current,	3-pole, BS type	[A]					
AC22A, up to 690V	4-pole, BS type	[A]					
	3-, 4-pole, DIN type	[A]					

* 500V

Steel sheet

IP65, IP54

Black / red-yellow handle types



Front operated

Switch-disconnectors from 16 to 1600 Amperes

			OT16...63	OT125	OTL16...63
Rated operational current,	3-, 4-pole	[A]	16 25 40 63 80	125	16 25 40 63 80
AC22A, up to 690V	6-pole	[A]	-	16 25 40 63 80	16 25 40

Change-over switches from 16 to 800 Amperes

			OT16...63
Rated operational current,	3-pole	[A]	16 25 32 45 63
AC22A, up to 690V	4-pole	[A]	-

Switch fuses, BS / DIN -types from 20 to 800 Amperes

			OS20...32
Rated operational current,	2-pole, BS type	[A]	-
AC22A, up to 690V	3-, 4-pole, BS type	[A]	20 32
	3-, 4-pole, DIN type	[A]	-

* 500V

Aluminum

IP65

Black / red handle types



Side operated

Front operated

Switch-disconnectors from 25 to 630 Amperes

			KSE_25	KSE_40	KSE_63..._125
Rated operational current,	2-pole	[A]	25	40	-
AC22A, up to 500V	3-pole	[A]	25	40	63 80 125
	4-pole	[A]	25	40	63 80

Accessories

Cable glands and entries

Auxiliary contacts

Padlock shackle



DC-rated switches

OTP45...63	OTP125	OT160...800	OTP16_MS	OTP16...32_MS
-	-	-	DC21A: 16	DC21A: 16 32
63 80	125	160 200 250 315 400 570 720	-	-
63 80	125	160 200 250 315 400 570 720	-	-
45 63	125	160 200 250 315 400 570 720	-	-
OS20...32		OS32...400		
20 32		32* 63* 135* 200 315 400		
20 32		32* 63* 100* 200		
-		32* 63* 125* 135* 250 400		

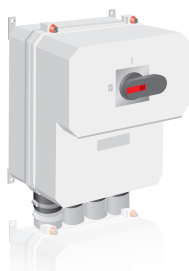


Stainless steel sheet

IP65
Black / red-yellow
handle types



OTL100...125	OT160...1600	From 16 to 125 Amperes	OTR16...63	OTR100...125
100 125	125 160 200 250 315 400 570 720 1000 1250 1600	16 25 40 63 80		100 125
63 80	125 160 200 250 315 400 570 720	16 25 40		63 80
OT160...800				
160 200 250 315 400 570 720				
160 200 250 315 400 570 720				
OS20...800				
32* 63* 125* 135* 200 315 400 600 720 720				
20* 32* 63* 125* 135* 200 315 400				
32* 63* 125* 135* 250 400 600 720				



Fireman's switch

KSE3160...3630	KSF_25	KSF_40
-	25	-
160 250 315 500 630	25	40
-	25	40

Cam switches 10...315 Amperes

Quick and easy to install

Rotary cam switches



Cam switch size	OM	ON	OL40	OL63
I_{th} / IEC 60947 [A]	10	25	45	63
UL 508 [A]	10	25	40	-

Standard cam switches

ON-OFF switches	x	x	x	x
Change-over switches	x	x	x	x
Bypass switches		x	x	x
Multistep switches	x	x	x	x
Motor control switches				
Ventilation switches	x	x	x	
Reversing switches		x	x	x
Star-delta switches		x	x	x
Pole-change switches (Dahlander)		x	x	x
Pumpstart switches	x	x		
Stop switches	x	x		
Start switches	x	x		
Voltmeter switches	x	x		
Ammeter switches	x	x	x	
Volt-ammeter switches		x		
Binarycode switches		x		

^{*)} Cam switch OL80 with rated current 80 A is available and can be configured in Camweb

Customized cam switches for applications with special requirements

With Camweb (<http://switchselector.com>) you can configure cam switches according to your needs.

Camweb is a user friendly tool. It guides the user during the specification process, so incompatible solutions are avoided.

Ordering with Camweb is easy

The tool generates the type and ordering codes automatically. The complete delivery, has only one number and it includes handle and front plate. For every special switch that is specified, Camweb generates a unique product type.

The order handling process is the same for standard and non-standard switches.

Accessories

Handles

Front plates

Base mounting kit

DIN-rail mounting plate

Enclosures

Shafts

Lettering plates

Spare key

Door coupling kits

Connection jumpers

Protective rear cover

Nut spanner tool



DIN rail
mounted

Enclosed
cam switches

OL80N

OL125

OL160

OL200

ON_M

ON

OL40

80

150

175

315

25

25

45

*)

125

160

200

25

25

40

x

x

x

x

x

x

x

x

x

x

x

x

x

x

x

x

x

x

x

x

x

x

x

x

x

x

x

x

x

x

x

x

x

x

x

x

x

x

x

x

x

x

What can be specified from Camweb?

- Front plate engraving
- Padlocking in various positions
- Key operation
- Key interlock
- Double and triple gang switches
- Long cam switches with metallic shaft, with up to 60 contacts and 12 positions.

- Base, DIN rail or door mounting
- Contact diagram
- Enclosed switches
- Additional lettering plates
- Door coupling
- Metallic cam shaft
- Gold contacts

Accessories



Designing and executing your installation is quick and easy with the extensive variety of accessories offered by ABB.

Handles

You can choose between selector, pistol and direct-mounted handle types according to switch type and size. The handles are available in plastic or metal.

A safe operation is ensured through protection degrees up to IP65, possibility to padlock in OFF position and interlock the door in ON position.

Shafts

Shafts with 6 and 12 mm diameters are used with selector and pistol type handles. The length range is between 85 and

535 mm. The shafts are adjustable to different installation depths. It is not necessary to cut them to precise length.

Auxiliary contacts

The snap-on auxiliary contacts can be fitted on the side of the switch or inside the mechanism cover, depending on the switch size and type.

OMD control units for automatic operation

OMD control units can be used together with motorized change-over switches to create an automatic transfer switch. Different types of control units ensure that you find a suitable product for your needs.

Fuse monitors

ABB offers you a wide variety of fuse monitoring options for both AC and DC circuits.

Other accessories

- Additional power poles, neutral and earth terminals
- Terminal clamps for different cable types and sizes
- Terminal shrouds
- Conversion kits





Designing and executing your installation is quick and easy with the extensive variety of accessories offered by ABB.

Contact us

ABB Oy

Low Voltage Switches

P.O. Box 622

FI-65101 Vaasa, Finland

Phone: +358 10 22 11

Fax: +358 10 22 45708

E-Mail: firstname.surname@fi.abb.com

www.abb.com

The technical data is valid at the time of printing. We reserve the right to subsequent alterations.

