

We reserve all rights in this document and in the information contained therein. Reproduction, use or disclosure to third parties without express authority is strictly forbidden. © ABB 19

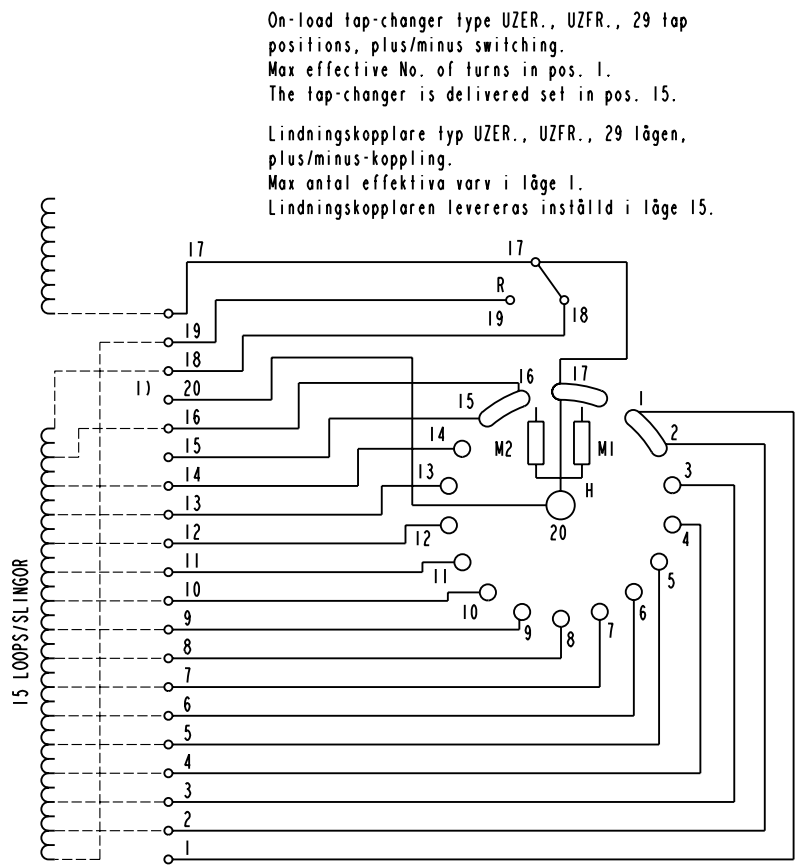
Pos. Lage	R connects förbinder	H connects förbinder
1		2-20
2		3-20
3		4-20
4		5-20
5		6-20
6		7-20
7		8-20
8		9-20
9	17-18	10-20
10		11-20
11		12-20
12		13-20
13		14-20
14A		15-20
14		16-20
15		17-20
15A		
16		1-20
16A		2-20
17		3-20
18		4-20
19		5-20
20		6-20
21		7-20
22	17-19	8-20
23		9-20
24		10-20
25		11-20
26		12-20
27		13-20
28		14-20
29		15-20

A position with letter is a through position and gives the same voltage as the normal position.

Läge med bokstav är ett genomloppsläge och ger samma spänning som normalläget.

1) Connections between the terminals 20 of the three phases are included in the star-point type.

Förbindningar mellan uttag 20 i de tre faserna ingår i nollpunktsutförandet.



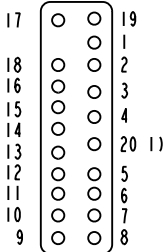
On-load tap-changer type UZER., UZFR., 29 tap positions, plus/minus switching.
Max effective No. of turns in pos. 1.
The tap-changer is delivered set in pos. 15.

Lindningskopplare typ UZER., UZFR., 29 lägen, plus/minus-koppling.
Max antal effektiva varv i läge 1.
Lindningskopplaren levereras inställd i läge 15.

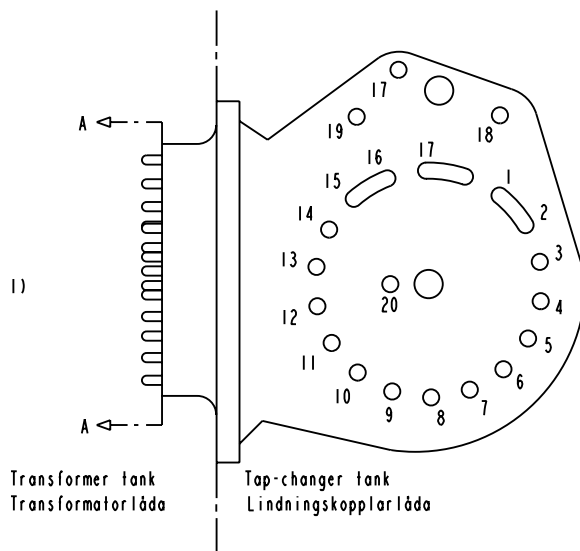
The tap-changer is shown in pos. 15
Lindningskopplaren visad i läge 15

- R Change-over selector Plus/minus-omkopplare
- H Main contact Huvudkontakt
- M1, M2 Transition contacts Motståndskontakter

Terminal board Plint



Section A-A
Sektion A-A



Transformer tank
Transformatorlåda

Tap-changer tank
Lindningskopplarlåda

Sheet	Cont	Year	Week	Appd	Year	Week	
Rev Ind	Revision	Accepted for prod by	Description (English) CONNECTION DIAGRAM				DATA ORIGINAL
Design checked by	B-O. Stenestam	Drawn by	L. Bergman	Description (own language) KOPPLINGSSCHEMA		File name 0394-11	
Design checked by	M. Hedlund	Issued by	Dept Year Week COM/TKO 97 33	5492 0394-11		Lang Sheet 1	
Drawn by	Form No.		Asea Brown Boveri		Rev Ind	Cont	



Asea Brown Boveri