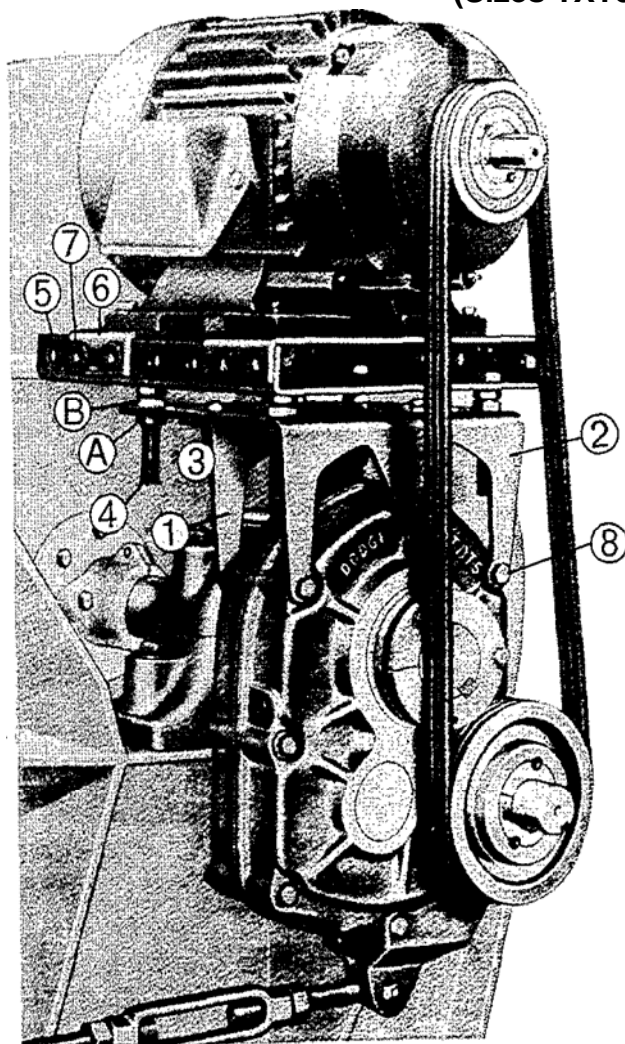


INSTALLATION MANUAL **TA8 thru TA15 Motor Mounts** **for DODGE® TORQUE-ARM™ Speed Reducers** **(Sizes TXT8 thru 12, TDT 13 thru 15)**



Install reducer on driven shaft and fasten torque arm securely per instructions supplied with the reducer. The motor mount does not limit the position of the reducer. However, it must be installed on output end of reducer as shown in photo.

Remove two or three (as required) housing bolts on output end of reducer. Install back support 1 and front support 2 with new housing bolts 8. Install mounting bolts 3. Install mounting plate 5 with adjusting studs 4 as shown in photo.

Assemble the front motor rail 6 by loosely bolting through the two front holes on each side of mounting plate (see photo) with mounting rail bolts 7.

Measure the distance between front and rear mounting holes of motor. Position the rear motor rail to this distance and loosely bolt to the mounting plate.

Center the motor on the motor rails. Use a plain washer under each slot in the motor rails when the motor mounting bolts are less than 5/8" diameter. Bolt motor snugly to motor rails.

WARNING

If electrical connections are installed at this time, turn off and lock out or tag power source before proceeding. Failure to observe these precautions could result in bodily injury.

Install motor sheave and reducer sheave on their shafts as close as possible to the motor and reducer housings. **Note:** The motor rails may be moved forward or backward from the position shown in the photograph to permit alignment of the V-belt sheaves. It is permissible for the front motor rail to extend beyond the mounting plate 5. Align the V-belt sheaves carefully and tighten all bolts securely.

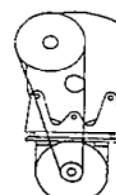
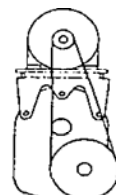
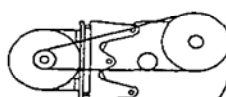
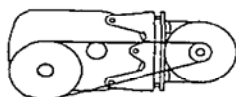
Install V-belts and adjust belt tension. The installation photo shows the mount near the minimum belt center position. To increase the center distance, loosen the four nuts "A" on the adjusting studs and tighten the four nuts "B" alternately and evenly until the belts are properly tensioned.

Check all bolts to see that they are securely tightened.

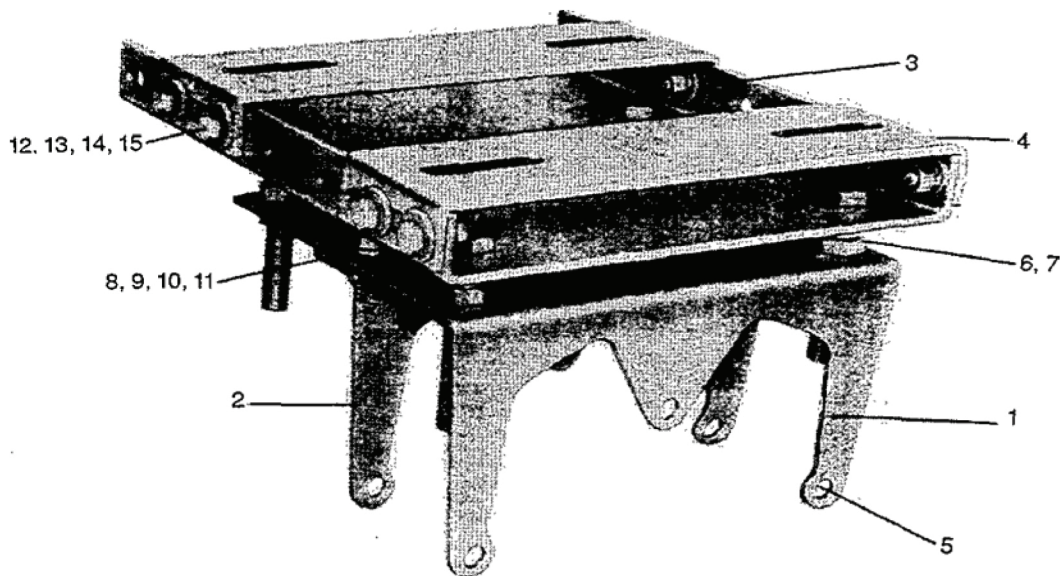
WARNING

Ensure that all guards are properly installed before proceeding. Exercise extreme care to avoid contacting rotating parts. Failure to observe these precautions could result in bodily injury.

MOUNT
MOTOR
AT ANY
POINT
AROUND
DRIVE
SHAFT



WARNING: Because of the possible danger to persons(s) or property from accidents which may result from the improper use of products, it is important that correct procedures be followed: Products must be used in accordance with the engineering information specified in the catalog. Proper installation, maintenance and operation procedures must be observed. The instructions in the instruction manuals must be followed. Inspections should be made as necessary to assure safe operation under prevailing conditions. Proper guards and other suitable safety devices or procedures as may be desirable or as may be specified in safety codes should be provided, and are neither provided by Baldor Electric Company nor are the responsibility of Baldor Electric Company. This unit and its associated equipment must be installed, adjusted and maintained by qualified personnel who are familiar with the construction and operation of all equipment in the system and the potential hazards involved. When risk to persons or property may be involved, a holding device must be an integral part of the driven equipment beyond the speed reducer output shaft.



REPLACEMENT PARTS FOR TA8 THRU TA15 MOTOR MOUNTS

REF. NO.	NAME OF PART	NO. REQ'D	TA8 PART NO.	TA9 PART NO.	TA10 PART NO.	TA12 PART NO.	TA13 PART NO.	TA14 PART NO.	TA15 PART NO.
1	FRONT SUPPORT	1	248403	249403	250403	272312	272315	272320	272394
2	BACK SUPPORT	1	248402	249402	250402	272311	272314	272319	272393
3	BOTTOM PLATE	1	248405	248405	248405	272316	272316	272316	272316
4	MOTOR RAIL	2	248404	248404	248404	272317	272317	272317	272317
5	HOUSING BOLTS	3	411737	411737	411738	411739*	411740*	411741*	411742*
6	THREADED STUD	4	408591	408591	408591	408591	408591	408591	408005
7	NUT	16	407281	407281	407281	407281	407281	407281	407101
8	BOLT	2	411102	411102	411102	411743	411743	411743	411743
9	NUT	2	407282	407282	407282	407279	407279	407279	407279
10	LOCKWASHER	2	419019	419019	419019	419136	419136	419136	419136
11	SAE WASHER	2	419078	419078	419078	419135	419135	419135	419135
12	BOLT	8	411105	411105	411105	411111	411111	411111	411111
13	SAE WASHER	16	419078	419078	419078	419078	419078	419078	419078
14	NUT	8	407282	407282	407282	407282	407282	407282	407282
15	LOCKWASHER	8	419019	419019	419019	419019	419019	419019	419019

* QTY. REQ'D. 4

BALDOR

World Headquarters
P.O. Box 2400, Fort Smith, AR 72902-2400 U.S.A., Ph: (1) 479.646.4711, Fax (1) 479.648.5792, International Fax (1) 479.648.5895
Dodge Product Support
6040 Ponders Court, Greenville, SC 29615-4617 U.S.A., Ph: (1) 864.297.4800, Fax: (1) 864.281.2433
www.baldor.com

© Baldor Electric Company

MN1636
(Replaces 499368)



All Rights Reserved. Printed in USA.

06/30/09