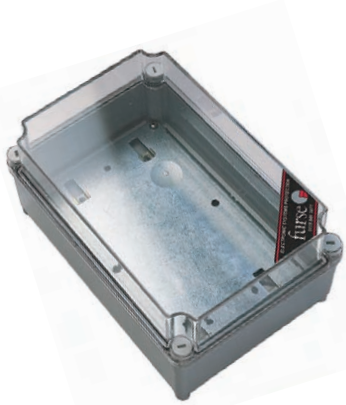


Protector accessories

WBX Series



WBX Series

A range of moisture and dirt resistant enclosures for the convenient installation of ESP protectors and their associated CME with grey base and either a see-through or grey (part number /G or /GS) lid.

Features & benefits

- Tough polycarbonate enclosures (except ABS WBX 2/G)
- Weatherproof with IP resistance to dirt and water of IP56 or more
- Clear lid enables easy visual inspection of the protector's visual status indication (WBX 3, WBX 4, WBX D4, WBX 8, WBX D8, WBX M2, WBX M4)
- Grey lid for applications not needing regular protector inspection (WBX 2/G, WBX 3/G, WBX 4/GS, WBX 8/GS and WBX 16/2/G)
- For external CCTV and other installations requiring added security the WBX 4/GS and WBX 8/GS are supplied with an opaque lid and special secure head screws (plus tool)
- Supplied complete with metal base (mounting) plate with pre-prepared mounting positions and fixing hardware for easy installation (except WBX 2/G which has a plain metal base)

Application

Use on coaxial cables to protect RF transmitter and receiver systems, including electronics located at the antenna or dish. Typical examples include cell sites, military communications, satellite earth stations, pager systems and emergency services communications systems.

Installation

The protector(s), or CME kit, are mounted on the metal base plate, which in turn mounts in the enclosure.

WBX Series

WBX Series - Technical specification

Enclosure Part No.	For Use with Following Protectors	Enclosure Part No.	For Use with Following Protectors
WBX D4	1 ESP 240 or 415/XXX/TNS or TNC protector, or single phase D1 series protector	WBX M4	1 ESP M4 series protector
WBX D8	1 ESP 415/XXX/TT protector, or three phase D1 series protector	WBX 4 or the secure WBX 4/GS	1 CME 4 and associated protectors
WBX 3	1 single phase M1 series protector	WBX 8 or the secure WBX 8/GS	1 CME 8 and associated protectors
WBX 4	1 three phase M1 series protector	WBX 16/2/G	1 or 2 CME 16 and associated protectors
WBX M2	1 ESP M2 series protector	WBX 2/G	1 or 2 single earth stud protectors
		WBX 3/G	Up to 3 single earth stud protectors
		WBX 3/G	1 double earth stud protector

	WBX 2/G	WBX 3 WBX 3/G	WBX 4 WBX 4/GS	WBX D4	WBX 8 WBX 8/GS	WBX D8	WBX 16/2/G	WBX M2	WBX M4
Weight: – Unit	0.45 kg	0.5 kg	0.9 kg	0.4 kg	1.3 kg	0.55 kg	6.4 kg	1.9 kg	2.2 kg
– Packaged	0.5 kg	0.55 kg	0.95 kg	0.45 kg	1.35kg	0.6 kg	7.6 kg	2.3 kg	3.0 kg

Dimensions:

Length: – Internal	150 mm	222 mm	225 mm	–	225 mm	–	460 mm	254 mm	254 mm
– External	160 mm	230 mm	235 mm	200 mm	235 mm	200 mm	474 mm	280 mm	280 mm
Width: – Internal	110 mm	72 mm	150 mm	–	225 mm	–	380 mm	254 mm	254 mm
– External	120 mm	80 mm	160 mm	123 mm	235 mm	195 mm	396 mm	280 mm	280 mm
Depth: – Internal	71 mm	79 mm	100 mm	–	100 mm	–	120 mm	115 mm	165 mm
– External	90 mm	85 mm	117 mm	112 mm	117 mm	112 mm	128 mm	130 mm	180 mm
Fixing centres (mm)	148 x 90	210 x 60	215 x 140	140 centrally	215 x 215	140 x 88	380 x 310	254 x 254	254 x 254
IP rating	IP66	IP67	IP66	IP65	IP66	IP65	IP56	IP67	IP67