



CATALOG

NON-METALLIC BOXES

Carlon[®]

ENGINEERED
TO OUTFIT



Those who do, trust blue. Safe, durable and code compliant, Carlon® non-metallic boxes and accessories have set the industry standard in power delivery for decades.

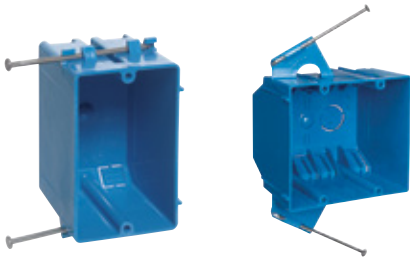
Carlon Blue® is dedicated to creating greener homes. Our commitment to reducing our carbon footprint begins with responsible U.S. manufacturing, producing products locally for the markets they serve. Through innovative processes, we repurpose scrap plastic, diverting 10 tons of waste from landfills each month. Additionally, our advanced packaging solutions save 110,000 pounds annually, earning us the prestigious Environmental Product Declaration (EPD).



TABLE OF CONTENTS

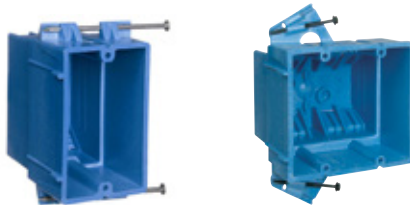
04	Overview
05–09	Carlton Blue™ PVC boxes
10–12	Carlton® ceiling boxes
13	Carlton® accessories
14–16	Carlton® SuperBlue boxes
17–18	Polycarbonate boxes
19	High-heat fiberglass boxes
20–21	Dual and low voltage boxes
22–24	Low-voltage structured cable management system
25	Reference: Accessory clamps and ground strap
26	Index

RECOGNIZED AS THE INDUSTRY STANDARD IN NON-METALLIC BOXES



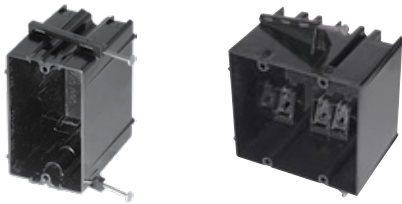
Carlton Blue™ PVC boxes

Carlton non-metallic boxes feature PVC construction for easier installation, greater performance and lower installation cost. Designed and listed for use with non-metallic sheathed cable in accordance with Article 314 of the National Electrical Code®, they make fast work of any residential or light commercial application. Look for the trademarked color blue to be sure it is a quality Thomas & Betts PVC Box.



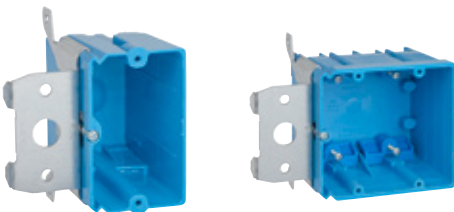
Carlton SuperBlue® boxes

Carlton Super Blue provides all of the desired features of a PVC box with the strength and durability of the heavy wall boxes. Rigid enough not to flex when nailed to a stud and strong enough to withstand a hammer blow in cold temperatures.



Carlton Black Polycarbonate boxes

Carlton non-metallic boxes feature a rugged polycarbonate construction to withstand extreme temperatures. The boxes will not distort or soften in heat and they won't become brittle in the cold.



Carlton High Heat boxes

These new 2-hour fire-rated boxes can be installed in the same stud cavity of a shared two-hour wall. Ideal for multi-family construction.



Carlton Round Fan and Fixture boxes

These boxes are manufactured from high quality polycarbonate and are built with the strength needed for safe installation of lights and fans.



Carlton Low Voltage

Carlton adds to its box offering a series of brackets specifically for low voltage applications. These come in orange.

CARLON BLUE™ PVC BOXES

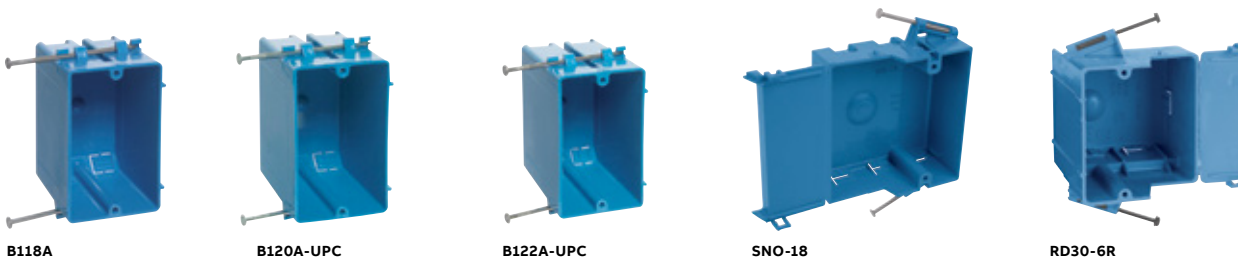
Carlton non-metallic boxes feature PVC construction for easier installation, greater performance and lower installation cost. Designed and listed for use with non-metallic sheathed cable in accordance with Article 314 of the National Electrical Code®, they make fast work of any residential or light commercial application.

Features and benefits:

- All PVC boxes are listed to UL514C
- All PVC boxes are listed for masonry walls
- All PVC boxes are UL Classified for two-hour fire wall and/or fire ceiling
- All PVC boxes meet NEMA OS-2
- All PVC boxes are permissible for use with 90°C conductors
- UL File E11461 and R9140

One-gang nail-on

New work



ONE-GANG NAIL-ON 18.0–30.0 CU. IN.



Cat. no.	Size (cu. in.)	Mounting means	Description	Dimensions (in.)	Std. ctn.
B118A	18.0	Captive nails	Mounts vertically to wood stud	3 ³ / ₄ L x 2 ¹ / ₄ W x 2 ⁷ / ₈ D	100
B120A-UPC	20.0	Captive nails	Mounts vertically to wood stud	3 ⁷ / ₈ L x 2 ¹ / ₄ W x 3 ¹ / ₄ D	100
B122A-UPC	22.0	Captive nails	Mounts vertically to wood stud	3 ³ / ₄ L x 2 ¹ / ₄ W x 3 ¹ / ₂ D	100
SNO-18	18.0	Angled side nails	Mounts vertically to wood stud, hinged door	4 ¹ / ₁₆ L x 2 ⁵ / ₁₆ opening 3 ³ / ₁₆ overall W x 1 ³ / ₄ D	100
RD30-6R	30.0	Captive nails	Large KO for #6 or #8 cable dryer box	3 ¹ / ₁₆ L x 2 ⁵ / ₁₆ opening 3 ⁷ / ₈ overall W x 3 ⁵ / ₈ D	50

One-gang

New/old work box



ONE-GANG 24.5 CU. IN.



Cat. no.	Size (cu. in.)	Mounting means	Description	Dimensions (in.)	Std. ctn.
B125AB	24.5	Captive nails, side flange, internal screws, vertical or horizontal	Side flange for new work or breakaway flange and internal screw for old work	3 ¹⁵ / ₁₆ L x 2 ⁷ / ₃₂ W x 3 ¹³ / ₁₆ D	24

One-gang

New work



B108B-UPC



B118B-UPC



H112HBR

ONE-GANG 8.0-18.0 CU. IN.



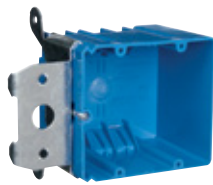
Cat. no.	Size (cu. in.)	Mounting means	Description	Dimensions (in.)	Std. ctn.
B108B-UPC	8.0	Bracket	—	3 ⁵ / ₈ L x 2 ³ / ₈ W x 1 ¹ / ₄ D	25
B118B-UPC	18.0	Bracket for 3/8" to 5/8" wallboard – steel and wood stud mounting	—	3 ³ / ₄ L x 2 ¹ / ₄ W x 2 ¹⁵ / ₁₆ D	5
B112HBR	12.0	—	Handy box, gray, non-metallic	4 L x 1 ⁷ / ₈ W x 2 ¹ / ₈ D	36

One, two and three-gang adjustable

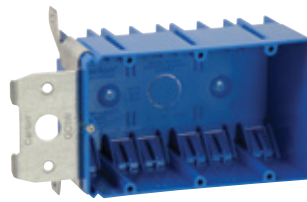
New work



One-gang



Two-gang



Three-gang

Features and benefits:

- Design enables adjustment from 0" to 1³/₄" after installation
- Ideal for new work or retrofit upgrade applications
- Ideal for various drywall thicknesses and wall finishes

ONE, TWO AND THREE-GANG ADJUSTABLE



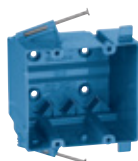
Cat. no.	Size (cu. in.)	Mounting means	Description	Dimensions (in.)	Std. ctn.
B121ADJ	21.0	Adjustable bracket	Adjusts 0"–1 ³ / ₄ "	3.65 L x 2.25 W x 3.32 D	24
B121ADJH	21.0	Adjustable bracket	Horizontal one-gang	3.65 W x 2.25 H x 3.32 D	12
B234ADJ	34.0	Adjustable bracket	Adjusts 0"–1 ³ / ₄ "	4 W x 3 ⁵ / ₈ H x 3 D	16
B234ADJC	34.0	Adjustable bracket	Large 220V knockout	5 ⁵ / ₈ W x 3 ⁵ / ₈ H x 3 D	16
B349ADJ	49.0	Adjustable bracket	Adjusts 0"–1 ³ / ₄ "	5 ¹³ / ₁₆ L x 3 ⁵ / ₈ W x 3 D	16

Two-gang nail-on

New work



B232ACP



SN-236-V

TWO-GANG NAIL-ON 32.0-36.0 CU. IN.



Cat. no.	Size (cu in.)	Mounting means	Description	Dimensions (in.)	Std. ctn.
B232ACP	32.0	Captive nails	—	3 ³ / ₄ L x 4 W x 3 D	50
SN-236-V	36.0	Captive nails	—	4 L x 3 ⁵ / ₈ W x 3 ¹ / ₈ D	50

Two-gang bracket

New work



B232BR

TWO-GANG 32.0 CU. IN.



Cat. no.	Size (cu. in.)	Mounting means	Description	Dimensions (in.)	Std. ctn.
B232BR	32.0	Bracket mounting	Bracket for ³ / ₈ " to ⁵ / ₈ " wallboard — steel or wood stud	3 ³ / ₄ L x 4 W x 3 D	50

Two-gang bracket/screw

New/old work



B249B



SCDIVS

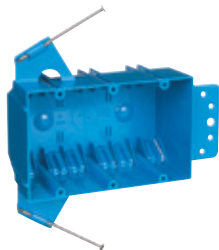
TWO-GANG 48.2 CU. IN.



Cat. no.	Size (cu. in.)	Mounting means	Description	Dimensions (in.)	Std. ctn.
B249B	48.2	Captive nails, side flange for new work or breakaway flange and internal screws for old work, vertical or horizontal	Mounts to metal or wood stud, horizontally or vertically, new work or old work	3 ¹⁵ / ₁₆ L x 4 ¹ / ₁₃ W x 31 ³ / ₁₆ D	12
SCDIVS	—	Insert into two-gang B249B	Low voltage divider		5

Three-gang nail-on

New work



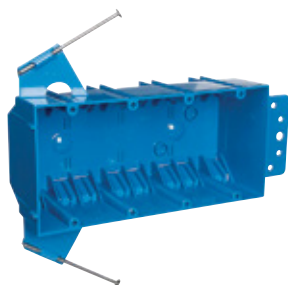
THREE-GANG NAIL-ON 44.0 CU. IN.



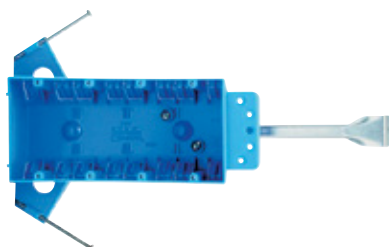
Cat. no.	Size (cu. in.)	Mounting means	Description	Dimensions (in.)	Std. ctn.
B344AB	44.0	Captive nails and bracket support	Traditional cable clamp	5 ⁷ / ₈ L x 3 ³ / ₄ W x 2 ¹¹ / ₁₆ D	30

Four-gang nail-on

New work



B455A-UPC



B455AH

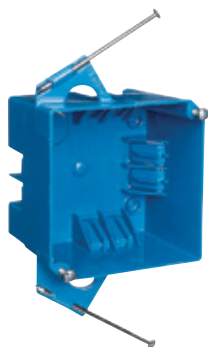
FOUR-GANG NAIL-ON 55 CU. IN.



Cat. no.	Size (cu. in.)	Mounting means	Description	Dimensions (in.)	Std. ctn.
B455AH	55.0	Captive nails, bracket support and hanger bar	—	7 ³ / ₅ L x 3 ⁷ / ₁₀ W x 2 ¹ / ₂ D	25
B455A-UPC	55.0	Captive nails and bracket support	—	7 ³ / ₅ L x 3 ⁷ / ₁₀ W x 2 ¹ / ₂ D	25

4" Square

New work



B432A-UPC

4" SQUARE 18.0-32.0 CU. IN.



Cat. no.	Size (cu. in.)	Mounting means	Description	Dimensions (in.)	Std. ctn.
B432A-UPC	32.0	Captive nails	—	2 ⁵ / ₈ D x 4 W x 4 L	50

One-gang

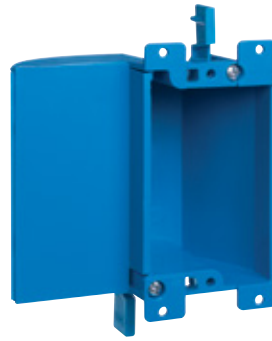
Old work



B120R



B114R-UPC



B117RSWR



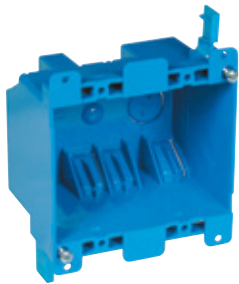
B108R-UPC



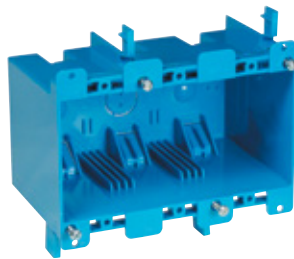
Cat. no.	Size (cu. in.)	Mounting means	Description	Dimensions (in.)	Std. ctn.
B120R	20.0	Mounting ears and swing bracket	—	4 ¹ / ₈ L x 2 ⁵ / ₁₆ W x 3 ⁵ / ₈ D	50
B114R-UPC	14.0	Mounting ears and swing clamps	—	4 ¹ / ₈ L x 2 ¹ / ₄ W x 2 ³ / ₄ D	50
B117RSWR	17.0	Mounting ears and swing clamps	Access panel	3.64 L x 4.07 W x 2.00 D (2.20 opening)	30
B108R-UPC	8.0	Mounting ears	—	3 ⁵ / ₈ L x 2 ³ / ₈ W x 1 ¹ / ₄ D	25

Two to four-gang

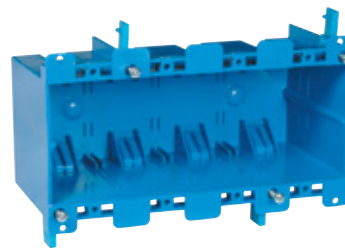
Old work



B225R-UPC



B355R



B468R

TWO, THREE AND FOUR-GANG 25.0 - 68.0 CU. IN.



Cat. no.	Size (cu. in.)	Mounting means	Description	Dimensions (in.)	Std. ctn.
B225R-UPC	25.0	Mounting ears and swing clamps	—	3 ¹⁵ / ₁₆ L x 3 ¹ / ₈ W x 2 ³ / ₄ D	30
B355R	55.0	Mounting ears and swing clamps	—	5.72 L x 2.79 W x 3.69 D	6
B468R	68.0	Mounting ears and swing clamps	—	7.57 L x 2.89 W x 3.56 D	6

Fan-rated ceiling boxes

New work

Features

- 2¾" and 3½" spaced light fixture/device mounting holes
- Ceiling fan support with 3½" spaced mounting holes, screws supplied
- Steel bracket has tapped holes for secure fan mounting
- Includes #10-32 screws for fan support (must be used for ceiling fan installation)
- Built-in cable clamps hold wires securely in box
- Fan load rating clearly visible inside box
- Box volume: 20 cu. in.
- Maximum number of wires in box:
 - (10) #14 AWG
 - (8) #12 AWG or #10 AWG

Ratings

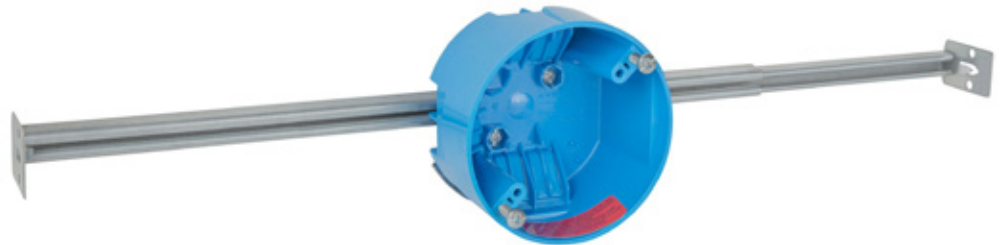
- Fire rating: 2 hours
- Fan support: 35 lb. or less
- Fixture support: 50 lb. or less

Materials

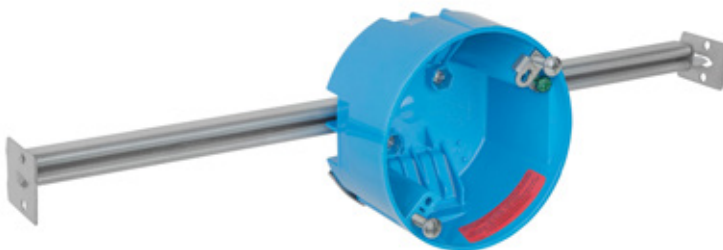
- Box: Polycarbonate
- Bar hanger: Steel
- Fan support bracket: Steel



B520A-CFB



B620KR-CFB



B620KRG-CFB

FAN-RATED CEILING BOXES



Cat. no.	Size (cu. in.)	Description	Std. pkg. qty.
B520A-CFB	20	Ceiling box with L-bracket	50
B520P-CFB	20	Ceiling box with L-bracket and ground screw	50
B620KR-CFB	20	Ceiling box with 14¾"-22½" adjustable bar hanger	30
B620KGR-CFB	20	Ceiling box with 14¾"-22½" adjustable bar hanger and ground screw	30

Fixture-rated ceiling boxes

New work



B518P-UPC



B518A-UPC

FIXTURE-RATED CEILING BOXES 3/0 18 CU. IN.



Cat. no.	Size (cu. in.)	Mounting means	Description	Dimensions (in.)	Std. ctn.
B518A-UPC •	18.0	Captive nails	No ground lug	3 Dia. x 2¾ D	75
B518P-UPC •	18.0	Captive nails	Ground lug and screw attached	3 Dia. x 2¾ D	75

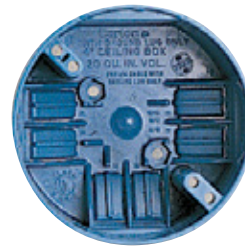
• Listed for fixture support up to 50 lbs.



B520A-UPC



B520P-UPC



B720R-SHK
35 lbs. maximum fan weight

FIXTURE-RATED CEILING BOXES 3/0-4/0 COMBINATION 20 CU. IN.



Cat. no.	Size (cu. in.)	Mounting means	Description	Dimensions (in.)	Std. ctn.
B520A-UPC •	20.0	Captive nails	Ground lug and screw attached fixture spacing for 2¾" and 3"	4 Dia. x 2¾ D	75
B520P-UPC •	20.0	Captive nails	Ground lug and screw attached	4 Dia. x 2¾ D	75
B720R-SHK •*	20.0	Mounting screws	Fan rated	4 Dia. x 2¾ D	18

• Listed for fixture support up to 50 lbs.

* 35 lbs. maximum fan weight

Fixture-rated ceiling boxes with bar hanger



B620HG-UPC



B620KR-UPC



B620KGR-UPC

FIXTURE-RATED CEILING BOXES WITH BAR HANGER 3/0-4/0 COMBINATION 20.0 CU. IN.



Cat. no.	Size (cu. in.)	Mounting means	Description	Dimensions (in.)	Std. ctn.
B620HG-UPC •	20.0	11.50"–14.50" Adjustable bar hanger Ground lug and screw attached	Ceiling box fixture spacing for 2 ³ / ₄ " and 3 ¹ / ₂ "	4 dia. x 2 ¹ / ₄ D	75
B620KR-UPC •	20.0	14.38"–22.50" Adjustable bar hanger	Ceiling box fixture spacing for 2 ³ / ₄ " and 3 ¹ / ₂ "	4 dia. x 2 ¹ / ₄ D	50
B620KGR-UPC •	20.0	14.38"–22.50" Adjustable bar hanger Ground lug and screw attached	Ceiling box fixture spacing for 2 ³ / ₄ " and 3 ¹ / ₂ "	4 dia. x 2 ¹ / ₄ D	50

• Listed for fixture support up to 50 lbs.

Round boxes

Old work



B618RP-UPC



B618R-UPC

4" ROUND BOXES 18.0 CU. IN.



Cat. no.	Size (cu. in.)	Mounting means	Description	Dimensions (in.)	Std. ctn.
B618RR*	18.0	Swing clamps	No ground lug	4 ¹ / ₄ Dia.	100
B618RPR*	18.0	Swing clamps	Ground lug	4 ¹ / ₄ Dia.	100

* Listed for wall fixture support up to 6 lbs.

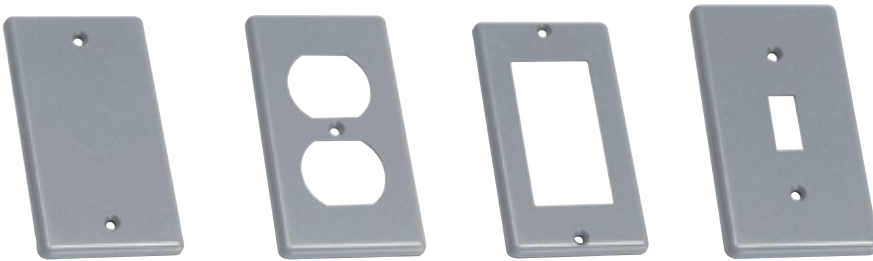
Box extender



Cat. no.	Mounting means	Dimensions (in.)	Std. ctn.
B1MGEXT-2	Screws	3¼ L x 2¼ W	10

UL Listed E11461.

Handy box and covers



HB1BL

HB1DP

HB1GF

HB1SW



Cat. no.	Size cu. in.	Description	Std. ctn. qty.
HB1BL	.25 x 4.30 x 2.38	Blank cover	25
HB1DP	.25 x 4.30 x 2.38	Duplex receptacle cover	25
HB1GF	.25 x 4.30 x 2.38	GFCI cover	25
HB1SW	.25 x 4.30 x 2.38	Toggle switch cover	25

CARLON® SUPERBLUE BOXES

Combine the features of the hard-shell thermoset box and the thermoplastic PVC-style box to create a “new” rigid non-metallic wiring box. Molded out of specially formulated thermoplastic material, Carlon SuperBlue boxes are so strong they won't crack or break in extreme environments. So rigid that they resist flexing and hold their shape even in the most challenging applications. The boxes are designed to nest inside each other to take up less space on the shelf or in the truck, while still providing the largest wire-fill capacity in their class.

Features and benefits:

- All PVC boxes are listed to UL514C
- All PVC boxes are listed for masonry walls
- All PVC boxes are UL® Classified for two-hour fire wall and/or fire ceiling
- All PVC boxes meet NEMA OS-2
- All PVC boxes are permissible for use with 90°C conductors
- UL File E11461 and R9140

One-gang

New work

ONE-GANG 22.0 CU. IN.



Cat. no.	Size (cu. in.)	Mounting means	Description	Dimensions (in.)	Std. ctn.
BH122A-UPC	22.0	Nails	One-gang	3.55 L x 2.11 W x 3.63 D	100

Two-gang

New work

TWO-GANG 35.0 CU. IN.



Cat. no.	Size (cu. in.)	Mounting means	Description	Dimensions (in.)	Std. ctn.
BH235A	35.0	Nails	Two-gang	3.55 L x 2.11 W x 3.50 D	48

Low-voltage

Divider plate



Cat. no.	Std. ctn.
SCDIV•	50

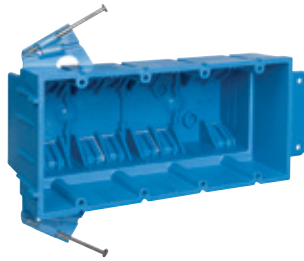
• For use with Carlon® SuperBlue™ boxes only.

Three and four-gang

New work



Three gang



Four gang

THREE AND FOUR-GANG 53.0 - 64.0 CU. IN.



Cat. no.	Size (cu. in.)	Mounting means	Description	Dimensions (in.)	Std. ctn.
BH353A	53.0	Nails	Three-gang	3.53 L x 5.66 W x 3.50 D	24
BH464A	64.0	Nails	Four-gang	3.53 L x 7.46 W x 3.18 D	36

One and two-gang

Old work



One gang



Two gang

ONE AND TWO-GANG 18.0 - 34.0 CU. IN.



Cat. no.	Size (cu. in.)	Mounting means	Description	Dimensions (in.)	Std. ctn.
BH118R	18.0	Mounting ears & swing clamps	One-gang	4.30 L x 2.56 W x 3.64 D	36
BH234R	34.0	Mounting ears & swing clamps	Two-gang	4.30 L x 4.36 W x 3.59 D	18

Fan-rated ceiling box

New work



FAN-RATED CEILING BOX 25.0 CU. IN.



Cat. no.	Size (cu. in.)	Mounting means	Description	Dimensions (in.)	Std. ctn.
BH525LR •	25.0	Nails	Ceiling fan box	4 Dia. x 3.06 D	24

• Listed for fan support up to 35 lbs. and fixture support up to 50 lbs.

Fixture-rated ceiling boxes

New work



BH525A-UPC



BH525P

FIXTURE-RATED CEILING BOXES 3/0-4/0 COMBINATION 25.0 CU. IN.



Cat. no.	Size (cu. in.)	Mounting means	Description	Dimensions (in.)	Std. ctn.
BH525A-UPC •	25.0	Nails	Ceiling box	4 Dia. x 3.00 D	48
BH525P •	25.0	Nails and grounding lug	Ceiling box	4 Dia. x 3.00 D	24

• Listed for fixture support up to 50 lbs.



BH525H



BH525HP

FIXTURE-RATED CEILING BOXES WITH HANGER BAR 25.0 CU. IN.



Cat. no.	Size (cu. in.)	Mounting means	Description	Dimensions (in.)	Std. ctn.
BH525H •	25.0	Hanger bar 11½"–18½"	Ceiling box	4 Dia. x 2.95 D	20
BH525HP •	25.0	Hanger bar 11½"–18½", Grounding lug	Ceiling box	4 Dia. x 2.95 D	20

• Listed for fixture support up to 50 lbs.

Round boxes

Old work



BH614R



BH614RP

ROUND BOXES 3½" 14.5 CU. IN.



Cat. no.	Size (cu. in.)	Mounting means	Description	Dimensions (in.)	Std. ctn.
BH614R • †	14.5	Base, ears & snap-in bracket	Round old/new work box	3½ Dia.	24
BH614RP • †	14.5	Base, ears & snap-in bracket	Round old/new work box w/ground lug	3½ Dia.	24

• Listed for wall fixture support up to 10 lbs.

† Tighten screws to 10 in.-lbs.

ENERGY-EFFICIENT VAPOR BARRIER BOXES

Vapor-barrier boxes are designed to meet the energy-efficiency requirements of modern homes. They feature a drywall flange covered with a foam gasket and additional gaskets over the cable entry points. These gaskets provide a vapor-tight seal, preventing the free flow of air through the box. This helps control heating costs in the winter and cooling costs in the summer.

Features and benefits:

- High-strength polycarbonate construction – will not shatter when cold or distort in heat
- V-clamps provide self-clamping cable entry (multi-gang and fan/fixture box)
- ½" offset flange to ensure a flush fit in ½" drywall
- Angled side nails for rapid installation
- Pre-drilled flanges for additional mounting options
- All Polycarbonate boxes are permissible for use with 90°C conductors
- UL® File E11461 and R9140
- All vapor barrier boxes meet NEMA OS-4



ONE-GANG 18.0 CU. IN.



Cat. no.	Size (cu. in.)	Mounting means	Description	Dimensions (in.)	Std. ctn.
FN-18-OWV	18.0	Swing clamps	Vapor barrier	4 ¼ L x 2 ½ W x 2 ½ D	6



FN-23



FN-236-V



FN-354-V



FN-460-VR

ONE-, TWO-, THREE- AND FOUR-GANG 22.5 - 60.0 CU. IN.



Cat. no.	Size (cu. in.)	Mounting means	Description	Dimensions (in.)	Std. ctn.
FN-23	22.5	Angled side nails	Vapor barrier	3 ⅞ L x 2 ¼ W x 3 ⅞ D	50
FN-236-V	36.0	Angled side nails	Vapor barrier	3 ½ x 4 x 3 ¼ D	50
FN-354-V	54.0	Angled side nails	Vapor barrier	3 ½ x 5 ⅝ x 3 ¼ D	20
FN-460-VR	60.0	Angled side nails	Vapor barrier	3 ½ x 7 ½ x 2 ¾ D	10



FN-426-C-V



FN-CFB



CFB-16-FR

CEILING FAN/FIXTURE BOX 26.0 CU. IN.



Cat. no.	Size (cu. in.)	Mounting means	Description	Dimensions (in.)	Std. ctn.
FN-426-C-V*	26.0	Angled side nails	Fixture box	4 L x 4 W x 2 ¾ D	50
FN-CFB**	26.0	#3 Bracket	Fan-rated box	4 L x 4 W x 2 ¾ D	50
CFB-16-FR***	26.0	Center screw	Fan-rated box	4 L x 4 W x 3 ⅝ D	20

*Listed for fixture support up to 50 lbs.

**Listed for fan support up to 35 lbs.

***Fan-rated up to 70 lbs.

Energy-efficient vapor barrier boxes

Fan-rated box hanger bar



DRAFTTIGHT® FAN RATED BOX HANGER BAR



Cat. no.	Size (cu. in.)	Mounting means	Description	Dimensions (in.)	Std. ctn.
FN-CFB-HB	26.0	Adjustable hanger bar	DraftTight® fan-rated ceiling box and hanger for joists from 16" to 24"	4 L x 4 W x 2¾ D	6

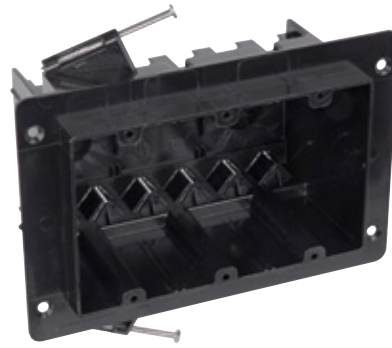
Listed for fan support up to 35 lbs. and fixture support up to 50 lbs.

Universal flanged

Nail-on boxes



NG-236-V



NG-354-V

TWO- AND THREE-GANG



Cat. no.	Size (cu. in.)	Mounting means	Description	Dimensions (in.)	Std. ctn.
NG-236-V •	36.0	Angled side nails	2-gang wall	3½ L x 4 W x 3¼ D	50
NG-354-V •	54.0	Angled side nails	3-gang wall	3½ L x 5¾ W x 3¼ D	20

• NG Boxes have ½" offset wallboard flange and V-type cable entry.

Ceiling fan box



CFB-16

16 CU. IN.



Cat. no.	Size (cu. in.)	Mounting means	Description	Dimensions (in.)	Std. ctn.
CFB-16	16	V-clamps, screw mount	Saddle-type ceiling fan box, black, polycarbonate	4 L x 4 W x 2¼ D	50

HIGH-HEAT BOX UL LISTED FOR 2-HOUR FIRE WALL — COMES WITH FLEXIBILITY OF THE ADJUST-A-BOX® LINE

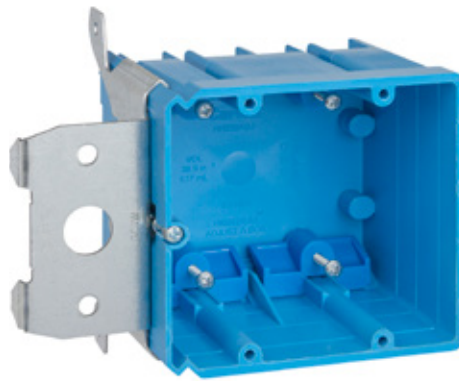
Fire rated for shared walls without the need for additional fireproofing! Carlon High-Heat BLUE boxes can be installed in the same stud cavity of a shared two-hour wall. The double gang box may also be installed back-to-back on 6" studs in the same cavity. Ideal for multi-family construction!

Features and benefits:

- Removing the box from bracket on the single gang allows to upgrade to a double gang box, ideal for old work applications
- The steel bracket is designed to be used with steel or wood studs



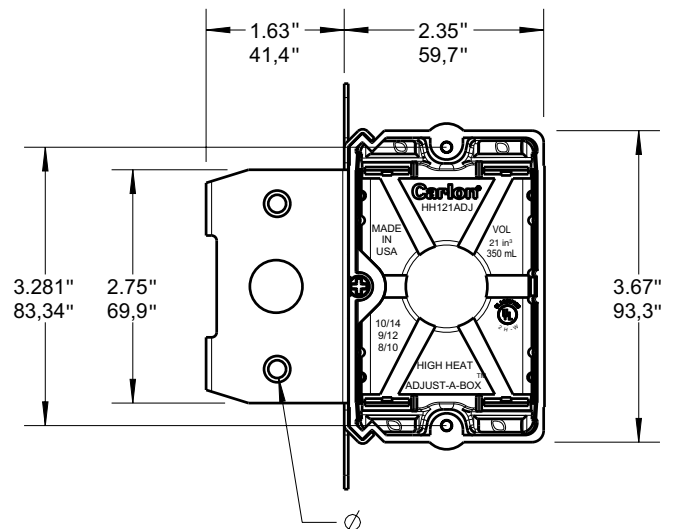
HH121ADJ



HH239ADJ



Cat. no.	Size (cu. in.)	Mounting means	Description	Dimensions (in.)	Std. ctn.
HH121ADJ	21.0	Adjustable bracket wood/steel stud	Single gang, adjustable up to 1 3/4"	3.6 H x 2.35 W x 3.59 D	24
HH239ADJ	38.0	Adjustable bracket wood/steel stud	Double gang, adjustable up to 1 3/4"	3.75 H x 4.05 W x 2.95 D	16



Dual-voltage Box/bracket



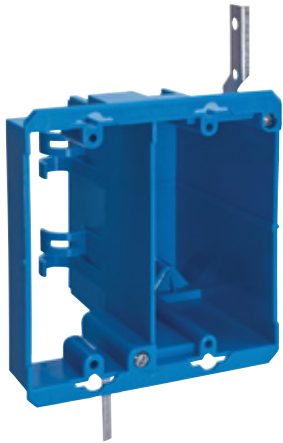
SC200DV

Features and benefits:

- Dual-voltage capability
- Accepts a two-gang faceplate
- 3/4" Resi-Rings®
- Backless design accommodates large/deep low-voltage devices
- Eliminates cutting the backs off electrical boxes
- Accommodates bend-radius requirements for low-voltage cabling
- Provides ample space for installation



Cat. no.	Size (cu. in.)	Mounting means	Dimensions (in.)	Std. ctn.
SC200DV	20.5	Angled side nails	3.69 L x 4.04 W x 3.67 D	16



E-18-4-DVR



Cat. no.	Size (cu. in.)	Mounting means	Description	Dimensions (in.)	Std. ctn.
E-18-4-DVR	18.0	Thermoplastic molded ears #4 swing brackets	Integral molded V-clamp	3 ^{25/32} L x 2 ^{7/32} W x 2 ^{1/4} D	100

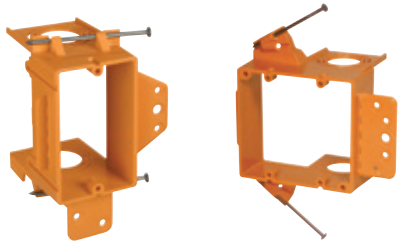
Low-voltage Box/bracket

Features and benefits:

- Backless design accommodates large/deep low-voltage devices
- Eliminates cutting the backs off electrical boxes
- Accommodates bend-radius requirements for low-voltage cabling
- Provides ample space for installation
- Mount flange for steel stud application

One- and two-gang versions only:

- Resi-Rings® with concentric knockouts
- Accepts ¾", 1" and 1¼" Resi-Gard®
- Horizontal mounting bracket (one-gang only)
- Breakaway drywall support flange provides easy alignment for 1/2" drywall
- Screw-mount option
- Breakaway vertical mounting flange
- Breakaway feature enables the use of the low-voltage add-on bracket



SC100A

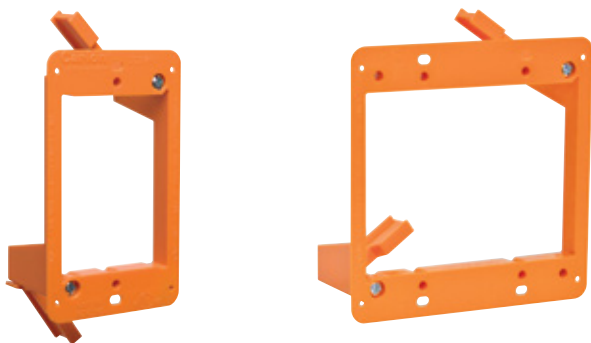
SC200AR



Cat. no.	Size (cu. in.)	Mounting means	Description	Dimensions (in.)	Std. ctn.
SC100A•	N/A	Captive nails	¾", 1", 1¼" Resi-Rings®	3.73 L x 2.32 W x 3.15 D	24
SC200AR•	N/A	Captive angled nails	¾", 1", 1¼" Resi-Rings®	3.77 L x 4.07 W x 3.15 D	24

• UL Listed E216492.

Old work Brackets



SC100RR

SC200RR



Features and benefits:

- Rectangular flange for faster/easier installation
- Shallow bracket – less material, easier to work with
- Marking hole for wall opening
- Thinner flange for less protrusion on the wall
- SINGLE-GANG ONLY – clamps stop at center point to prevent the bracket from twisting or bending out of the wall

Cat. no.	Size (cu. in.)	Mounting means	Description	Dimensions (in.)	Std. ctn.
SC100RR•	N/A	Adjustable bracket	1-gang	4.32 L x 2.52 W x 1.66 D	12
SC200RR•	N/A	Adjustable bracket	2-gang	4.28 L x 4.28 W x 1.66 D	6

• UL Listed E216492.

LOW-VOLTAGE STRUCTURED CABLE MANAGEMENT SYSTEM



Recessed dual-voltage 3-gang old work plate

The New Carlon® RDV 3-gang old work plate has been developed to simplify today's in-home entertainment/networking needs. The box is designed to accommodate the wires, cables and cords used with flat-panel display installations. It features a two-gang low-voltage opening and a one-gang opening for an outlet/switch box (boxes, devices and plates not included). The hi-gloss, recessed design eliminates unsightly wires, cables and cords and blends with any décor. The RDV old work plate makes installing flat-panel displays faster and easier!



Recessed Dual-Voltage 3-Gang Old Work Plate

Features and benefits:

- 3-gang dual-service capability: accommodates one line voltage and two low-voltage services using one plate (boxes, devices and plates not included)
- Recessed low-profile design: eliminates unsightly wires and plug heads
- Universal 1-gang outlet/switch opening: select the size box you need
- Pre-assembled box and frame: reduces labor time and saves money
- Shallow design: provides ample room behind the drywall and between the studs and accommodates cable bend requirements
- Four swing-out clamps: locks the plate securely to the wall – horizontal or vertical mount
- Superior hi-gloss, paintable finish: professional appearance and blends with any décor
- Non-metallic, ABS material: lightweight and easy to handle

Installation:

Please read these instructions completely before attempting installation.

IMPORTANT! Before attempting installation, be sure power is off by removing the fuse or switching the circuit breaker to “off.” Make sure the recessed dual-voltage plate is installed in accordance with the National Electrical Code® (NEC®) and local codes. NEC and National Electrical Code are registered trademarks of the National Fire Protection Association, Inc.

1. Locate studs and determine if they are 16" or 24" apart. If 16" apart, measure a maximum of 3" from edge of stud to determine plate location. If 24" apart, center plate between studs.
Note: High-voltage side must be 3" from stud.
2. Place SC300PRB or SC300PRR face down against the wall. Using a hammer, tap around the edge of the plate to mark area to be cut out (Fig. 1). Remove plate from wall, a line should be visible on the drywall. Cutout should be approximately 6.25" x 9.25".
3. Carefully cut out area of drywall with a utility knife or drywall saw.
4. Place SC300PRB or SC300PRR in wall and secure by tightening down all four zip-mount retainers (Fig. 2).
5. Select device and outlet/switch box, cat. no. B114R (14 cu. in.) or B120R (20 cu. in.), based on wire fill needs (Fig. 3).
6. Insert wires through boxes (B114R or B120R and SC300PRB or SC300PRR). Make sure high- and low-voltage wires do not come in contact with one another.
7. Install Carlon® old work zip box®, model B114R or B120R (Fig. 4).
8. Install receptacle and faceplate per manufacturer's instructions (Fig. 5).
9. Install low-voltage devices and faceplate per manufacturer's instructions (Fig. 6 and Fig. 7).
Note: When preparing for later installation of low-voltage devices, use a 2-gang blank plate to cover wall opening for a clean finished look.



Fig. 1



Fig. 2



Fig. 3



Fig. 4



Fig. 5



Fig. 6



Fig. 7

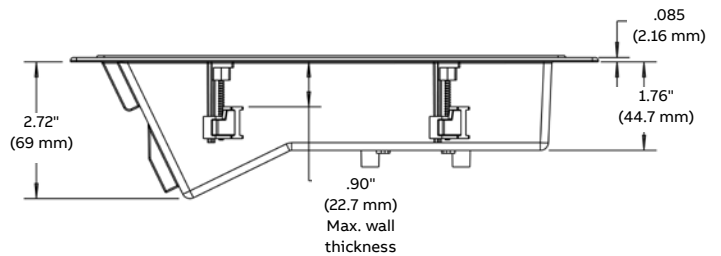
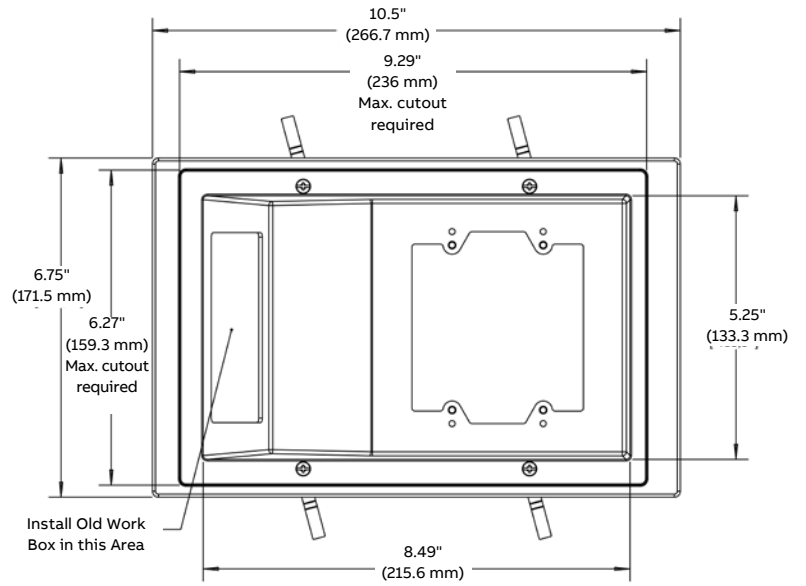
Installed:



Ample room between drywall and studs



Cat. no.	Size cu. in.	Mounting means	Description	Dimensions (in.)	Std. ctn.
SC300PRB	N/A	Zip-mount retainers	RDV 3-gang old work plate	6.75 L x 10.5 W x 2.72 D	20
SC300PRR	N/A	Zip-mount retainers	RDV 3-gang old work plate with outlet box (B114R)	6.75 L x 10.5 W x 2.72 D	3



NEC BOX REQUIREMENTS* CUBIC INCHES FOR 1-40 CONDUCTORS

Wire Size (AWG)	Cubic-inch capacity by number of conductors																			
	1	2	3	4	5	6	7	8	9	10	11	12	13	14	15	16	17	18	19	20
#18	1.50	3.00	4.50	6.00	7.50	9.00	10.50	12.00	13.50	15.00	16.50	18.00	19.50	21.00	22.50	24.00	25.50	27.00	28.50	30.00
#16	1.75	3.50	5.25	7.00	8.75	10.50	12.25	14.00	15.75	17.50	19.25	21.00	22.75	24.50	26.25	28.00	29.75	31.50	33.25	36.00
#14	2.00	4.00	6.00	8.00	10.00	12.00	14.00	16.00	18.00	20.00	22.00	24.00	26.00	28.00	30.00	32.00	34.00	36.00	38.00	40.00
#12	2.25	4.50	6.75	9.00	11.25	13.50	15.75	18.00	20.25	22.50	24.75	27.00	29.25	31.50	33.75	36.00	38.25	40.50	42.75	45.00
#10	2.50	5.00	7.50	10.00	12.50	15.00	17.50	20.00	22.50	25.00	27.50	30.00	32.50	35.00	37.50	40.00	42.50	45.00	47.50	50.00
	21	22	23	24	25	26	27	28	29	30	31	32	33	34	35	36	37	38	39	40
#18	31.50	33.00	34.50	36.00	37.50	39.00	40.50	42.00	43.50	45.00	46.50	48.00	49.50	51.00	52.50	54.00	55.50	57.00	58.50	60.00
#16	36.75	38.50	40.25	42.00	43.75	45.50	47.25	49.00	50.75	52.50	54.25	56.00	57.75	59.50	61.25	63.00	64.75	66.50	68.25	70.00
#14	42.00	44.00	46.00	48.00	50.00	52.00	54.00	56.00	58.00	60.00	62.00	64.00	66.00	68.00	70.00	72.00	74.00	76.00	78.00	80.00
#12	47.25	49.50	51.75	54.00	56.25	58.50	60.75	63.00	65.25	67.50	69.75	72.00	74.25	76.50	78.75	81.00	83.25	85.50	87.75	90.00
#10	52.50	55.00	57.50	60.00	62.50	65.00	67.50	70.00	72.50	75.00	77.50	80.00	82.50	85.00	87.50	90.00	92.50	95.00	97.50	100.00

* Make allowance of two additional conductors for each device, one for clamps if required and one for one or more grounding conductors entering the box. See NEC® 314.16(B).

Index

Cat. no.	Page no.	Cat. no.	Page no.	Cat. no.	Page no.
B108B-UPC	6	B520A-CFB	10	FN-23	17
B108R-UPC	9	B520A-UPC	11	FN-236-V	17
B112HBR	6	B520P-CFB	10	FN-354-V	17
B114R-UPC	9	B520P-UPC	11	FN-426-C-V	17
B117RSWR	9	B618RPR	12	FN-460-VR	17
B118A	5	B618RR	12	FN-CFB	17
B118B-UPC	6	B620HG-UPC	12	FN-CFB-HB	18
B120A-UPC	5	B620KGR-CFB	10	HB1BL	13
B120R	9	B620KGR-UPC	12	HB1DP	13
B121ADJ	6	B620KR-CFB	10	HB1GF	13
B121ADJH	6	B620KR-UPC	12	HB1SW	13
B122A-UPC	5	B720R-SHK	11	HH121ADJ	19
B125AB	5	BH118R	15	HH239ADJ	19
B1MGEXT-2	13	BH122A-UPC	14	NG-236-V	18
B225R-UPC	9	BH234R	15	NG-354-V	18
B232ACP	7	BH235A	14	RD30-6R	5
B232BR	7	BH353A	15	SC100A	21
B234ADJ	6	BH464A	15	SC100RR	21
B234ADJC	6	BH525A-UPC	16	SC200AR	21
B249B	7	BH525H	16	SC200DV	20
B344AB	8	BH525HP	16	SC200RR	21
B349ADJ	6	BH525LR	15	SC300PRB	24
B355R	9	BH525P	16	SC300PRR	24
B432A-UPC	8	BH614R	16	SCDIV	14
B455AH	8	BH614RP	16	SCDIVS	7
B455A-UPC	8	CFB-16	18	SN-236-V	7
B468R	9	CFB-16-FR	17	SNO-18	5
B518A-UPC	11	E-18-4-DVR	20		
B518P-UPC	11	FN-18-OWV	17		

Additional information

ABB has made every attempt to ensure the accuracy and reliability of the contents of this document. However, all content is provided for general informational purposes only, and ABB makes no guaranty or warranty, express or implied, as to the accuracy of any technical content, or that the information contained in this publication will be error free and all such guarantees or warranties are expressly disclaimed. ABB may change or modify the contents at any time, without prior notice. We reserve all rights in this document and in the subject matter and illustrations contained therein. Any reproduction or utilization of its contents — in whole or in parts — is forbidden without prior written consent of ABB.



—
US

ABB Installation Products
Electrification business
860 Ridge Lake Blvd.
Memphis, TN 38120
+1 901-252-5000

electrification.us.abb.com