

Pluggable interface relays CR Range including fully assembled socket and relay combinations for CR-S Range

ABB's pluggable interface relays

Introduction

Interface relays are widely used in various industrial applications: As an interface they link the electronic controlling, e.g. PLC (programmable logic controller), PC or field bus systems, to the sensor / actuator level. Here, they take on various functions: Switching of AC or DC loads with different resistive, inductive and capacitive parts, switching voltages from a few mV up to 250 V, switching currents from a few mA up to 16 A, amplification of weak control signals, electrical isolation of control and load circuits, and signal multiplying. In contrast to electronic switching devices, interface relays don't use additional internal protective circuits and thus are overload-proof against short-time variations like current or voltage peaks.

Operational benefits

The high quality material of the contacts of the CR-Range provides a higher mechanical and electrical life time. Therefore the periods of service increase significantly. In consequence the down time of the application is reduced which results in a saving of costs and time.

Compact design

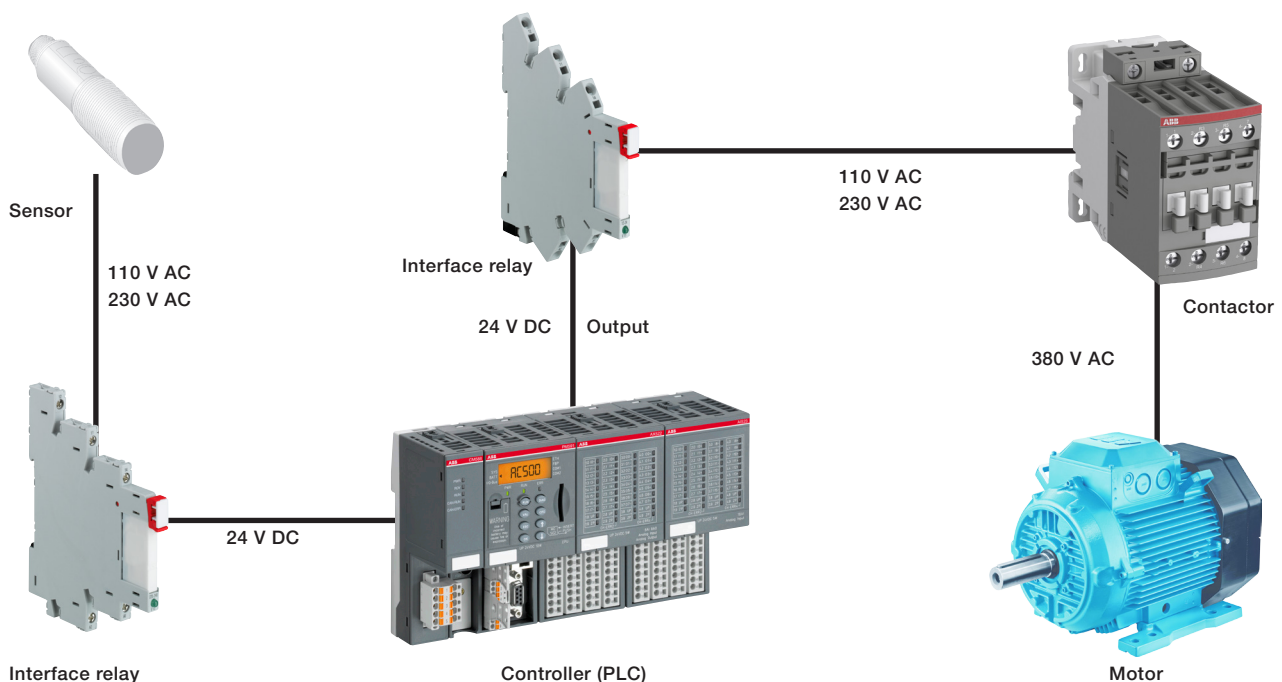
With the CR-Range products the space inside switch boards is reduced. The CR-S Range for example stands out with its extra slim width of only 5 mm (6.2 mm with socket) the switch boards will be more compact.

Different connection terminals

Selected products are available with different connection terminals. With both screw and spring connection terminals the CR-Range provides the ideal solution for the customers' requirements. The fast wiring of the products saves valuable time for example during the maintenance of a product.

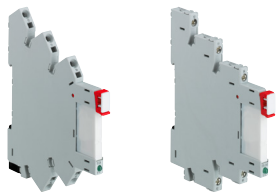
World-wide & close cooperation

ABB's ability to provide the right solution for every application doesn't just apply to our interface relays. We have a full portfolio of electrical devices for all your requirements, and a global branch network that means we're never far away. We provide end-to-end customer support with a comprehensive service offering, and our local service teams guarantee you fast after-sales service.



ABB's pluggable interface relays

Product overview



Pluggable interface relays CR-S Range

- Complete variation (relays assembled on socket) for high-runners:
 - 24 V AC/DC, 110 V AC/DC, 230 V AC/DC
- Relay with standard and gold-plated contacts
 - Standard (AgSnO₂), gold-plated (AgSnO₂/Au)
- Sockets with LED
 - Screw/spring connection terminal
- Cadmium free contact material
- Further accessories
 - Jumper bar, marker, separator



Pluggable pcb relays CR-P

- 9 different coil voltages
 - DC versions: 12 V, 24 V, 48 V, 110 V
 - AC versions: 24 V, 48 V, 110 V, 120 V, 230 V
- 1 output c/o contact (16 A) or 2 output c/o contacts (8 A) optionally equipped with gold contacts
- Logical or standard sockets
- Cadmium-free contact material
- Width of socket: 15.5 mm
- Pluggable function modules
 - Reverse polarity predection/ Free wheeling diode
 - LED indication
 - Overvoltage predection



Pluggable miniature relays CR-M

- 12 different coil voltages
 - DC versions: 12 V, 24 V, 48 V, 60 V, 110 V, 125 V, 220 V
 - AC versions: 24 V, 48 V, 110 V, 120 V, 230 V
- Output contacts
 - 2 c/o contacts (12 A), 3 c/o contacts (10 A) or 4 c/o contacts (6 A) optionally equipped with gold contacts, LED and free wheeling diode
- Integrated test button for manual actuation and locking of the output contacts (blue = DC, orange = AC) that can be removed if necessary
- With or without integrated LED
- Logical or standard sockets
- Cadmium-free contact material
- Width on socket: 27 mm
- Pluggable function modules
 - Reverse polarity predection/Free wheeling diode
 - LED indication
 - RC elements
 - Overvoltage predection



Pluggable universal relays CR-U

- 12 different coil voltages
 - DC versions: 12 V, 24 V, 48 V, 110 V, 125 V, 220 V
 - AC versions: 24 V, 48 V, 60 V, 110 V, 120 V, 230 V
- Output contacts
 - 2 c/o contacts (10 A), 3 c/o contacts (10 A)
- Integrated test button for manual actuation and locking of the output contacts (blue = DC, orange = AC) that can be removed if necessary
- With or without integrated LED
- Cadmium-free contact material
- Width on socket: 38 mm
- Pluggable function modules
 - Reverse polarity predection/ Free wheeling diode
 - LED indication
 - RC elements
 - Overvoltage predection
 - Multifunction time module

Pluggable interface relays CR-S Range

Product overview and ordering details

Order data - Pluggable complete interface relays (relay + socket)

Description	Connection	Rated control supply voltage U _s	Type	Order code
1 c/o (SPDT) contact, standard contact: 250 V, 6 A	Screw	24 V AC/DC	CR-S024VADC1CRS	1SVR405541R3110
	Spring	24 V AC/DC	CR-S024VADC1CRZ	1SVR405541R3210
	Screw	110 V AC/DC	CR-S110VADC1CRS	1SVR405541R6110
	Spring	110 V AC/DC	CR-S110VADC1CRZ	1SVR405541R6210
	Screw	230 V AC/DC	CR-S230VADC1CRS	1SVR405541R7110
	Spring	230 V AC/DC	CR-S230VADC1CRZ	1SVR405541R7210
1 c/o (SPDT) contact, gold contact: 12 V, 250 mA (3 W) ¹⁾	Screw	24 V AC/DC	CR-S024VADC1CRGS	1SVR405541R3120
	Spring	24 V AC/DC	CR-S024VADC1CRGZ	1SVR405541R3220
	Screw	110 V AC/DC	CR-S110VADC1CRGS	1SVR405541R6120
	Spring	110 V AC/DC	CR-S110VADC1CRGZ	1SVR405541R6220
	Screw	230 V AC/DC	CR-S230VADC1CRGS	1SVR405541R7120
	Spring	230 V AC/DC	CR-S230VADC1CRGZ	1SVR405541R7220

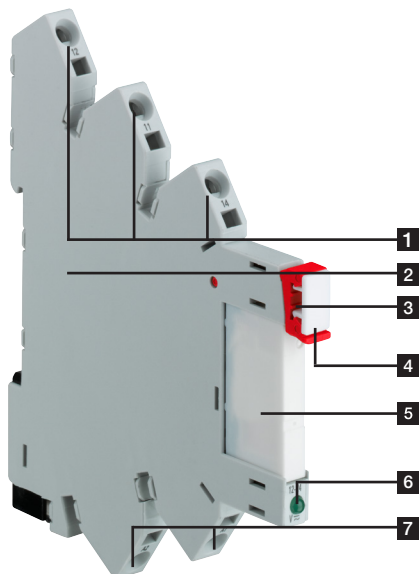
Order data - Pluggable interface relays

Description	Rated control supply voltage U _s	Type	Order code
1 c/o (SPDT) contact, standard contact: 250 V, 6 A	5 V DC	CR-S005VDC1R	1SVR405501R1010
	12 V DC	CR-S012VDC1R	1SVR405501R2010
	24 V DC	CR-S024VDC1R	1SVR405501R3010
	48 V DC	CR-S048VDC1R	1SVR405501R4010
	60 V DC	CR-S060VDC1R	1SVR405501R5010
1 c/o (SPDT) contact, gold contact: 12 V, 250 mA (3 W) ¹⁾	5 V DC	CR-S005VDC1RG	1SVR405501R1020
	12 V DC	CR-S012VDC1RG	1SVR405501R2020
	24 V DC	CR-S024VDC1RG	1SVR405501R3020
	48 V DC	CR-S048VDC1RG	1SVR405501R4020
	60 V DC	CR-S060VDC1RG	1SVR405501R5020

¹⁾ If specified maximum values exceeded, the gold plating is destroyed. The maximum values of the standard contacts are then valid.

Order data - Socket

Rated control supply voltage U _s	Connection	Type	Order code
6-24 V DC	Screw	CR-S006/024VDC1SS	1SVR405521R1100
6-24 V DC	Spring	CR-S006/024VDC1SZ	1SVR405521R1200
12-24 V AC/DC	Screw	CR-S012/024VADC1SS	1SVR405521R3100
12-24 V AC/DC	Spring	CR-S012/024VADC1SZ	1SVR405521R3200
48-60 V AC/DC	Screw	CR-S048/060VADC1SS	1SVR405521R5100
48-60 V AC/DC	Spring	CR-S048/060VADC1SZ	1SVR405521R5200
110-125 V AC/DC	Screw	CR-S110/125VADC1SS	1SVR405521R6100
110-125 V AC/DC	Spring	CR-S110/125VADC1SZ	1SVR405521R6200
220-240 V AC/DC	Screw	CR-S220/240VADC1SS	1SVR405521R7100
220-240 V AC/DC	Spring	CR-S220/240VADC1SZ	1SVR405521R7200



- 1 Output contacts
- 2 Socket
- 3 Relay holder
- 4 Marker
- 5 Interface relay
- 6 LED green: Control supply voltage applied
- 7 Control supply voltage

Pluggable interface relays CR-S Range

Accessories and assembled combinations

Order data - CR-S Range accessories

Version	Type	Order code
Jumper bar 20 pole, blue color	CR-SJB20-BLUE	1SVR405598R0700
Jumper bar 20 pole, red color	CR-SJB20-RED	1SVR405598R0800
Jumper bar 20 pole, black color	CR-SJB20-BLACK	1SVR405598R0900
Marker block	CR-SM	1SNB041391R0610
Separator	CR-SSEP	1SVR405599R0000

Relays assemblies

Control Voltage	Connection Terminal	Contact Material	Socket Type	Socket Order Code	Relay Type	Relay Order Code
5 V DC	Screw	standard	CR-S006/024VDC1SS	1SVR405521R1100	CR-S005VDC1R	1SVR405501R1010
	Spring	gold	CR-S006/024VDC1SS	1SVR405521R1100	CR-S005VDC1RG	1SVR405501R1020
12 V DC	Screw	standard	CR-S006/024VDC1SZ	1SVR405521R1200	CR-S005VDC1R	1SVR405501R1010
		gold	CR-S006/024VDC1SZ	1SVR405521R1200	CR-S005VDC1RG	1SVR405501R1020
	Spring	standard	CR-S006/024VDC1SS or CR-S012/024VADC1SS"	"1SVR405521R1100 or 1SVR405521R3100"	CR-S012VDC1R	1SVR405501R2010
		gold	"CR-S006/024VDC1SS or CR-S012/024VADC1SS"	"1SVR405521R1100 or 1SVR405521R3100"	CR-S012VDC1RG	1SVR405501R2020
12 V AC	Screw	standard	CR-S012/024VADC1SS	1SVR405521R3100	CR-S012VDC1R	1SVR405501R2010
		gold	CR-S012/024VADC1SS	1SVR405521R3100	CR-S012VDC1RG	1SVR405501R2020
	Spring	standard	CR-S012/024VADC1SZ	1SVR405521R3200	CR-S012VDC1R	1SVR405501R2010
		gold	CR-S012/024VADC1SZ	1SVR405521R3200	CR-S012VDC1RG	1SVR405501R2020
24 V DC	Screw	standard	"CR-S006/024VDC1SS or CR-S012/024VADC1SS"	"1SVR405521R1100 or 1SVR405521R3100"	CR-S024VDC1R	1SVR405501R3010
		gold	"CR-S006/024VDC1SS or CR-S012/024VADC1SS"	"1SVR405521R1100 or 1SVR405521R3100"	CR-S024VDC1RG	1SVR405501R3020
	Spring	standard	"CR-S006/024VDC1SZ or CR-S012/024VADC1SZ"	"1SVR405521R1200 or 1SVR405521R3200"	CR-S024VDC1R	1SVR405501R3010
		gold	"CR-S006/024VDC1SZ or CR-S012/024VADC1SZ"	"1SVR405521R1200 or 1SVR405521R3200"	CR-S024VDC1RG	1SVR405501R3020
24 V AC	Screw	standard	CR-S012/024VADC1SS	1SVR405521R3100	CR-S024VDC1R	1SVR405501R3010
		gold	CR-S012/024VADC1SS	1SVR405521R3100	CR-S024VDC1RG	1SVR405501R3020
	Spring	standard	CR-S012/024VADC1SZ	1SVR405521R3200	CR-S024VDC1R	1SVR405501R3010
		gold	CR-S012/024VADC1SZ	1SVR405521R3200	CR-S024VDC1RG	1SVR405501R3020
48 V AC/DC	Screw	standard	CR-S048/060VADC1SS	1SVR405521R5100	CR-S048VDC1R	1SVR405501R4010
		gold	CR-S048/060VADC1SS	1SVR405521R5100	CR-S048VDC1RG	1SVR405501R4020
	Spring	standard	CR-S048/060VADC1SZ	1SVR405521R5200	CR-S048VDC1R	1SVR405501R4010
		gold	CR-S048/060VADC1SZ	1SVR405521R5200	CR-S048VDC1RG	1SVR405501R4020
60 V AC/DC	Screw	standard	CR-S048/060VADC1SS	1SVR405521R5100	CR-S060VDC1R	1SVR405501R5010
		gold	CR-S048/060VADC1SS	1SVR405521R5100	CR-S060VDC1RG	1SVR405501R5020
	Spring	standard	CR-S048/060VADC1SZ	1SVR405521R5200	CR-S060VDC1R	1SVR405501R5010
		gold	CR-S048/060VADC1SZ	1SVR405521R5200	CR-S060VDC1RG	1SVR405501R5020
110-125 V AC/DC	Screw	standard	CR-S110/125VADC1SS	1SVR405521R6100	CR-S060VDC1R	1SVR405501R5010
		gold	CR-S110/125VADC1SS	1SVR405521R6100	CR-S060VDC1RG	1SVR405501R5020
	Spring	standard	CR-S110/125VADC1SZ	1SVR405521R6200	CR-S060VDC1R	1SVR405501R5010
		gold	CR-S110/125VADC1SZ	1SVR405521R6200	CR-S060VDC1RG	1SVR405501R5020
220-240 V AC/DC	Screw	standard	CR-S220/240VADC1SS	1SVR405521R7100	CR-S060VDC1R	1SVR405501R5010
		gold	CR-S220/240VADC1SS	1SVR405521R7100	CR-S060VDC1RG	1SVR405501R5020
	Spring	standard	CR-S220/240VADC1SZ	1SVR405521R7200	CR-S060VDC1R	1SVR405501R5010
		gold	CR-S220/240VADC1SZ	1SVR405521R7200	CR-S060VDC1RG	1SVR405501R5020

Pluggable pcb relays CR-P

Product overview and ordering details

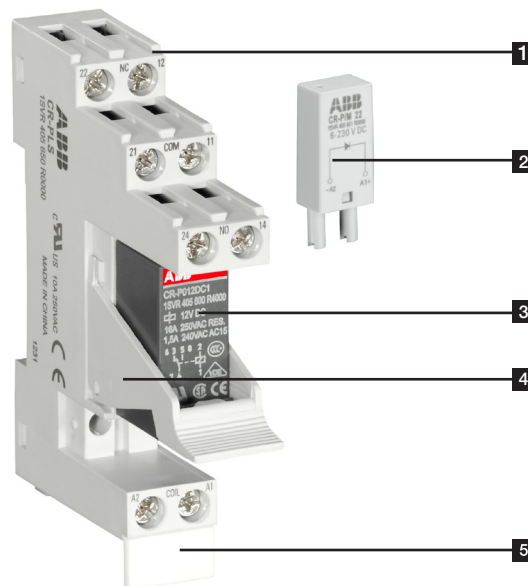


Ordering details - CR-P Range

Rated control supply voltage	Type	Order code
1 c/o (SPDT) contact: 250 V, 16 A		
12 V DC	CR-P012DC1	1SVR405600R4000
24 V DC	CR-P024DC1	1SVR405600R1000
48 V DC	CR-P048DC1	1SVR405600R6000
110 V DC	CR-P110DC1	1SVR405600R8000
24 V AC	CR-P024AC1	1SVR405600R0000
48 V AC	CR-P048AC1	1SVR405600R5000
110 V AC	CR-P110AC1	1SVR405600R7000
120 V AC	CR-P120AC1	1SVR405600R2000
230 V AC	CR-P230AC1	1SVR405600R3000
2 c/o (SPDT) contacts: 250 V, 8 A		
12 V DC	CR-P012DC2	1SVR405601R4000
24 V DC	CR-P024DC2	1SVR405601R1000
48 V DC	CR-P048DC2	1SVR405601R6000
110 V DC	CR-P110DC2	1SVR405601R8000
24 V AC	CR-P024AC2	1SVR405601R0000
48 V AC	CR-P048AC2	1SVR405601R5000
110 V AC	CR-P110AC2	1SVR405601R7000
120 V AC	CR-P120AC2	1SVR405601R2000
230 V AC	CR-P230AC2	1SVR405601R3000
with gold contacts: 2 c/o (SPDT) contacts, 250 V, 8 A		
24 V DC	CR-P024DC2G	1SVR405606R1000
24 V AC	CR-P024AC2G	1SVR405606R0000
110 V AC	CR-P110AC2G	1SVR405606R7000
230 V AC	CR-P230AC2G	1SVR405606R3000

Ordering details - Accessories for CR-P Range

Version	Connection terminal	Type	Order code
Logical socket with predefinitive separation	screw	CR-PLS	1SVR405650R0000
Logical socket	screw	CR-PLSx	1SVR405650R0100
Logical socket	spring	CR-PLC	1SVR405650R0200
Standard socket	screw	CR-PSS	1SVR405650R1000
Plastic holder for socket		CR-PH	1SVR405659R0000
Jumper bar for sockets with screw connection		CR-PJ	1SVR405658R5000
Marker		CR-PM	1SVR405658R0000



- 1 Socket
- 2 Pluggable function module
- 3 Interface relays
- 4 Holder
- 5 Marker

Function modules CR-P/M

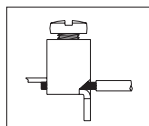
Product overview and ordering details



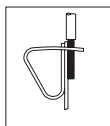
Ordering details - CR-P/M Range

Rated control supply voltage	Description	Version	Type	Order code
6-220 V DC	Diode - Reverse polarity protection/free wheeling diode	A1+, A2-	CR-P/M 22	1SVR405651R0000
6-24 V DC		red, A1+, A2- green, A1+, A2-	CR-P/M 42 CR-P/M 42V	1SVR405652R0000 1SVR405652R1000
24-60 V DC	Diode and LED - Reverse polarity protection/free wheeling diode	red, A1+, A2- green, A1+, A2-	CR-P/M 42B CR-P/M 42BV	1SVR405652R4000 1SVR405652R4100
110 V DC		red, A1+, A2- green, A1+, A2-	CR-P/M 42C CR-P/M 42CV	1SVR405652R9000 1SVR405652R9100
6-24 V AC			CR-P/M 52B	1SVR405653R0000
24-60 V AC	Spark quenching		CR-P/M 52D	1SVR405653R4000
110-230 V AC/DC			CR-P/M 52C	1SVR405653R1000
6-24 V AC/DC		red, for DC A1+, A2- green, for DC A1+, A2-	CR-P/M 62 CR-P/M 62V	1SVR405654R0000 1SVR405654R1000
24-60 V AC/DC	Diode, LED and reverse polarity protection	red, for DC A1+, A2- green, for DC A1+, A2-	CR-P/M 62E CR-P/M 62EV	1SVR405654R4000 1SVR405654R4100
110 V DC, 110-230 V AC		red, for DC A1+, A2- green, for DC A1+, A2-	CR-P/M 92 CR-P/M 92V	1SVR405654R0100 1SVR405654R1100
6-24 V AC/DC		red, for DC A1+, A2- green, for DC A1+, A2-	CR-P/M 62C CR-P/M 62CV	1SVR405655R0000 1SVR405655R1000
24-60 V AC/DC	Varistor and LED, Overvoltage protection	red, for DC A1+, A2- green, for DC A1+, A2-	CR-P/M 62D CR-P/M 62DV	1SVR405655R4000 1SVR405655R4100
110 V DC, 110-230 V AC		red, for DC A1+, A2- green, for DC A1+, A2-	CR-P/M 92C CR-P/M 92CV	1SVR405655R0100 1SVR405655R1100
24 V AC			CR-P/M 72	1SVR405656R0000
115 V AC	Overvoltage protection		CR-P/M 72A	1SVR405656R1000
230 V AC			CR-P/M 82	1SVR405656R2000

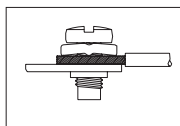
Connection terminals



screw



spring



fork-type

Pluggable miniature relays CR-M

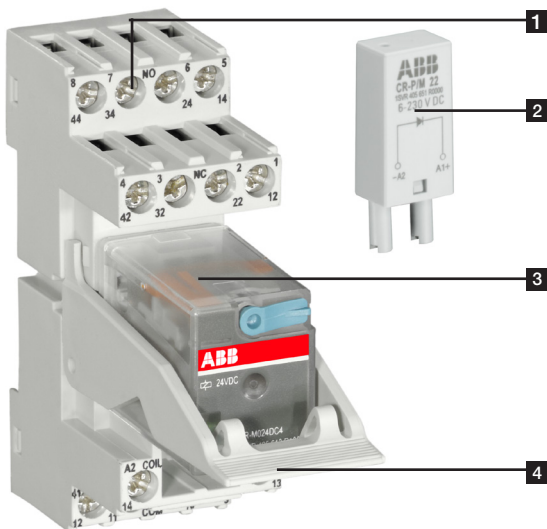
Product overview and ordering details

Ordering details - CR-M Range

Rated control supply voltage	Outputs	Contact ratings	Type	Order code
12 V DC	2 c/o (SPDT) contact without LED	250 V, 12 A	CR-M012DC2	1SVR405611R4000
24 V DC			CR-M024DC2	1SVR405611R1000
48 V DC			CR-M048DC2	1SVR405611R6000
60 V DC			CR-M060DC2	1SVR405611R4200
110 V DC			CR-M110DC2	1SVR405611R8000
125 V DC			CR-M125DC2	1SVR405611R8200
220 V DC			CR-M220DC2	1SVR405611R9000
24 V AC			CR-M024AC2	1SVR405611R0000
48 V AC			CR-M048AC2	1SVR405611R5000
110 V AC			CR-M110AC2	1SVR405611R7000
120 V AC			CR-M120AC2	1SVR405611R2000
230 V AC			CR-M230AC2	1SVR405611R3000
12 V DC	3 c/o (SPDT) contact without LED	250 V, 10 A	CR-M012DC3	1SVR405612R4000
24 V DC			CR-M024DC3	1SVR405612R1000
48 V DC			CR-M048DC3	1SVR405612R6000
60 V DC			CR-M060DC3	1SVR405612R4200
110 V DC			CR-M110DC3	1SVR405612R8000
125 V DC			CR-M125DC3	1SVR405612R8200
220 V DC			CR-M220DC3	1SVR405612R9000
24 V AC			CR-M024AC3	1SVR405612R0000
48 V AC			CR-M048AC3	1SVR405612R5000
60 V AC			CR-M060AC3	1SVR405612R5200
110 V AC			CR-M110AC3	1SVR405612R7000
120 V AC			CR-M120AC3	1SVR405612R2000
230 V AC	CR-M230AC3	1SVR405612R3000		
12 V DC	4 c/o (SPDT) contact without LED	250 V, 6 A	CR-M012DC4	1SVR405613R4000
24 V DC			CR-M024DC4	1SVR405613R1000
48 V DC			CR-M048DC4	1SVR405613R6000
60 V DC			CR-M060DC4	1SVR405613R4200
110 V DC			CR-M110DC4	1SVR405613R8000
125 V DC			CR-M125DC4	1SVR405613R8200
220 V DC			CR-M220DC4	1SVR405613R9000
24 V AC			CR-M024AC4	1SVR405613R0000
48 V AC			CR-M048AC4	1SVR405613R5000
110 V AC			CR-M110AC4	1SVR405613R7000
120 V AC			CR-M120AC4	1SVR405613R2000
230 V AC			CR-M230AC4	1SVR405613R3000

Ordering details - CR-M Range

Rated control supply voltage	Outputs	Contact ratings
12 V DC	2 c/o (SPDT) contact with LED	250 V, 12 A
24 V DC		
48 V DC		
60 V DC		
110 V DC		
125 V DC		
220 V DC		
24 V AC		
48 V AC		
110 V AC		
120 V AC		
230 V AC		
12 V DC	3 c/o (SPDT) contact with LED	250 V, 10 A
24 V DC		
48 V DC		
60 V DC		
110 V DC		
125 V DC		
220 V DC		
24 V AC		
48 V AC		
110 V AC		
120 V AC		
230 V AC		
12 V DC	4 c/o (SPDT) contact with LED	250 V, 6 A
24 V DC		
48 V DC		
60 V DC		
110 V DC		
125 V DC		
220 V DC		
24 V AC		
48 V AC		
110 V AC		
120 V AC		
230 V AC		
24 V DC	4 c/o (SPDT) contact LED and free wheeling diode	250 V, 6 A
24 V DC	4 c/o (SPDT) contact gold contacts	250 V, 6 A
24 V AC		
110 V AC		
230 V AC		
12 V DC	4 c/o (SPDT) contact gold contacts and LED	250 V / 6 A
24 V DC		
48 V DC		
60 V DC		
110 V DC		
125 V DC		
220 V DC	4 c/o (SPDT) contact with gold contacts, LED and free wheeling diode	
24 V AC		
48 V AC		
110 V AC		
120 V AC		
230 V AC		



- 1 Socket
- 2 Pluggable function module
- 3 Interface relays
- 4 Holder

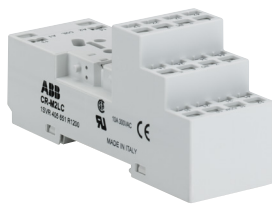
Pluggable miniature relays CR-M

Product overview and ordering details

Type	Order code
CR-M012DC2L	1SVR405611R4100
CR-M024DC2L	1SVR405611R1100
CR-M048DC2L	1SVR405611R6100
CR-M060DC2L	1SVR405611R4300
CR-M110DC2L	1SVR405611R8100
CR-M125DC2L	1SVR405611R8300
CR-M220DC2L	1SVR405611R9100
CR-M024AC2L	1SVR405611R0100
CR-M048AC2L	1SVR405611R5100
CR-M110AC2L	1SVR405611R7100
CR-M120AC2L	1SVR405611R2100
CR-M230AC2L	1SVR405611R3100
CR-M012DC3L	1SVR405612R4100
CR-M024DC3L	1SVR405612R1100
CR-M048DC3L	1SVR405612R6100
CR-M060DC3L	1SVR405612R4300
CR-M110DC3L	1SVR405612R8100
CR-M125DC3L	1SVR405612R8300
CR-M220DC3L	1SVR405612R9100
CR-M024AC3L	1SVR405612R0100
CR-M048AC3L	1SVR405612R5100
CR-M110AC3L	1SVR405612R7100
CR-M120AC3L	1SVR405612R2100
CR-M230AC3L	1SVR405612R3100
CR-M012DC4L	1SVR405613R4100
CR-M024DC4L	1SVR405613R1100
CR-M048DC4L	1SVR405613R6100
CR-M060DC4L	1SVR405613R4300
CR-M110DC4L	1SVR405613R8100
CR-M125DC4L	1SVR405613R8300
CR-M220DC4L	1SVR405613R9100
CR-M024AC4L	1SVR405613R0100
CR-M048AC4L	1SVR405613R5100
CR-M110AC4L	1SVR405613R7100
CR-M120AC4L	1SVR405613R2100
CR-M230AC4L	1SVR405613R3100
CR-M024DC4LD	1SVR405614R1100
CR-M024DC4G	1SVR405618R1000
CR-M024AC4G	1SVR405618R0000
CR-M110AC4G	1SVR405618R7000
CR-M230AC4G	1SVR405618R3000
CR-M012DC4LG	1SVR405618R4100
CR-M024DC4LG	1SVR405618R1100
CR-M048DC4LG	1SVR405618R6100
CR-M060DC4LG	1SVR405618R4300
CR-M110DC4LG	1SVR405618R8100
CR-M125DC4LG	1SVR405618R8300
CR-M220DC4LG	1SVR405618R9100
CR-M024AC4LG	1SVR405618R0100
CR-M048AC4LG	1SVR405618R5100
CR-M110AC4LG	1SVR405618R7100
CR-M120AC4LG	1SVR405618R2100
CR-M230AC4LG	1SVR405618R3100
CR-M012DC4LDG	1SVR405618R4400
CR-M024DC4LDG	1SVR405618R1400

Ordering details - Accessories

Version	Connection type	Type	Order code
Logical socket for 2 c/ocontact		CR-M2LS	1SVR405651R1100
Logical socket for 3 c/ocontact	screw	CR-M3LS	1SVR405651R2100
Logical socket for 2/4 c/ocontact		CR-M4LS	1SVR405651R3100
Logical socket for 2 c/ocontact	spring	CR-M2LC	1SVR405651R1200
Logical socket for 2/4 c/o		CR-M4LC	1SVR405651R3200
Standard socket for 2 c/o		CR-M2SS	1SVR405651R1000
Standard socket for 3 c/o	screw	CR-M3SS	1SVR405651R2000
Standard socket for 2/4 c/o		CR-M4SS	1SVR405651R3000
Standard socket for 2 c/o	fork type	CR-M2SF	1SVR405651R1300
Standard socket for 2/4 c/o		CR-M4SF	1SVR405651R3300
Plastic holder		CR-MH	1SVR405659R1000
Metal holder		CR-MH1	1SVR405659R1100
Jumper bar for sockets with screw connection		CR-MJ	1SVR405658R6000
Marker		CR-MM	1SVR405658R1000



Pluggable universal relays CR-U Range

Product overview and ordering details



Ordering details - CR-U Range

Rated control supply voltage	Outputs	Contact ratings	Type	Order code		
12 V DC	2 c/o (SPDT) contact, without LED	250 V, 10 A	CR-U012DC2	1SVR405621R4000		
24 V DC			CR-U024DC2	1SVR405621R1000		
48 V DC			CR-U048DC2	1SVR405621R6000		
110 V DC			CR-U110DC2	1SVR405621R8000		
220 V DC			CR-U220DC2	1SVR405621R9000		
24 V AC			CR-U024AC2	1SVR405621R0000		
48 V AC			CR-U048AC2	1SVR405621R5000		
110 V AC			CR-U110AC2	1SVR405621R7000		
120 V AC			CR-U120AC2	1SVR405621R2000		
230 V AC			CR-U230AC2	1SVR405621R3000		
12 V DC			3 c/o (SPDT) contact, without LED	250 V, 10 A	CR-U012DC3	1SVR405622R4000
24 V DC					CR-U024DC3	1SVR405622R1000
48 V DC	CR-U048DC3	1SVR405622R6000				
110 V DC	CR-U110DC3	1SVR405622R8000				
125 V DC	CR-U125DC3	1SVR405622R8200				
220 V DC	CR-U220DC3	1SVR405622R9000				
24 V AC	CR-U024AC3	1SVR405622R0000				
48 V AC	CR-U048AC3	1SVR405622R5000				
60 V AC	CR-U060AC3	1SVR405622R5200				
110 V AC	CR-U110AC3	1SVR405622R7000				
120 V AC	CR-U120AC3	1SVR405622R2000				
230 V AC	CR-U230AC3	1SVR405622R3000				
12 V DC	2 c/o (SPDT) contact, with LED	250 V, 10 A	CR-U012DC2L	1SVR405621R4100		
24 V DC			CR-U024DC2L	1SVR405621R1100		
48 V DC			CR-U048DC2L	1SVR405621R6100		
110 V DC			CR-U110DC2L	1SVR405621R8100		
220 V DC			CR-U220DC2L	1SVR405621R9100		
24 V AC			CR-U024AC2L	1SVR405621R0100		
48 V AC			CR-U048AC2L	1SVR405621R5100		
110 V AC			CR-U110AC2L	1SVR405621R7100		
120 V AC			CR-U120AC2L	1SVR405621R2100		
230 V AC			CR-U230AC2L	1SVR405621R3100		
12 V DC			3 c/o (SPDT) contact, with LED	250 V, 10 A	CR-U012DC3L	1SVR405622R4100
24 V DC					CR-U024DC3L	1SVR405622R1100
48 V DC	CR-U048DC3L	1SVR405622R6100				
110 V DC	CR-U110DC3L	1SVR405622R8100				
220 V DC	CR-U220DC3L	1SVR405622R9100				
24 V AC	CR-U024AC3L	1SVR405622R0100				
48 V AC	CR-U048AC3L	1SVR405622R5100				
110 V AC	CR-U110AC3L	1SVR405622R7100				
120 V AC	CR-U120AC3L	1SVR405622R2100				
230 V AC	CR-U230AC3L	1SVR405622R3100				

Ordering details - Accessories

Version	Type	Order code
Socket for 2 c/o and module	CR-U2S	1SVR405670R0000
Socket for 3 c/o and module	CR-U3S	1SVR405660R0000
Socket for 3 c/o	CR-U3E	1SVR405660R0100
Socket small for 2 c/o	CR-U2SM	1SVR405670R1100
Socket small for 3 c/o	CR-U3SM	1SVR405660R1100
Holder for CR-U socket	CR-UH	1SVR405669R0000

Pluggable universal relays CR-U Range

Product overview and ordering details



Ordering details - CR-U Range function modules

Rated control supply voltage	Description	Version	Type	Order code
6-230 V DC	Diode - Reverse polarity protection / free wheeling diode	A1+, A2-	CR-U 21	1SVR405661R0000
6-24 V DC		red, A1+, A2-	CR-U 41	1SVR405662R0000
		green, A1+, A2-	CR-U 41V	1SVR405662R1000
24-60 V DC	Diode and LED - Reverse polarity protection / free wheeling diode	red, A1+, A2-	CR-U 41B	1SVR405662R4000
		green, A1+, A2-	CR-U 41BV	1SVR405662R4100
110-230 V DC		red, A1+, A2-	CR-U 41C	1SVR405662R9000
		green, A1+, A2-	CR-U 41CV	1SVR405662R9100
6-24 V AC			CR-U 51B	1SVR405663R0000
24-60 V AC	Spark quenching		CR-U 51D	1SVR405663R4000
110-230 V AC			CR-U 51C	1SVR405663R1000
6-24 V AC/DC		red, for DC A1+, A2-	CR-U 61	1SVR405664R0000
		green, for DC A1+, A2-	CR-U 61V	1SVR405664R1000
24-60 V AC/DC	Diode and LED	red, for DC A1+, A2-	CR-U 61E	1SVR405664R4000
		green, for DC A1+, A2-	CR-U 61EV	1SVR405664R4100
110-230 V AC/DC		red, for DC A1+, A2-	CR-U 91	1SVR405664R0100
		green, for DC A1+, A2-	CR-U 91V	1SVR405664R1100
6-24 V AC/DC		red, for DC A1+, A2-	CR-U 61C	1SVR405665R0000
		green, for DC A1+, A2-	CR-U 61CV	1SVR405665R1000
24-60 V AC/DC	Varistor and LED Overvoltage protection	red, for DC A1+, A2-	CR-U 61D	1SVR405665R4000
		green, for DC A1+, A2-	CR-U 61DV	1SVR405665R4100
110-230 V AC/DC		red, for DC A1+, A2-	CR-U 91C	1SVR405665R0100
		green, for DC A1+, A2-	CR-U 91CV	1SVR405665R1100
24 V AC			CR-U 71	1SVR405666R0000
115 V AC	Overvoltage protection, varistor		CR-U 71A	1SVR405666R1000
230 V AC			CR-U 81	1SVR405666R2000
24-240 V AC/DC	Multifunction time module	pluggable onto CR-U2S and CR-U3S	CR-U T	1SVR405667R0000

Contact us

ABB STOTZ-KONTAKT GmbH

P. O. Box 10 16 80

69006 Heidelberg, Germany

Phone: +49 (0) 6221 7 01-0

Fax: +49 (0) 6221 7 01-13 25

E-mail: info.desto@de.abb.com

You can find the address of your
local sales organization on the
ABB home page

<http://www.abb.com/contacts>

-> Low Voltage Products and Systems

-> Control Products

-> Interface Relays and Optocouplers

Note:

We reserve the right to make technical changes or modify the contents of this document without prior notice. With regard to purchase orders, the agreed particulars shall prevail. ABB AG does not accept any responsibility whatsoever for potential errors or possible lack of information in this document.

We reserve all rights in this document and in the subject matter and illustrations contained therein. Any reproduction, disclosure to third parties or utilization of its contents – in whole or in parts – is forbidden without prior written consent of ABB AG.

Copyright© 2014 ABB

All rights reserved