

# Pump Up Productivity and Profit with Labor-Saving Technology



Electrical contractors can save labor hours and help protect their field workforce and customer installed base by investing in the new line of ABB smart power distribution equipment for monitoring and control.

Time is money for electrical contractors. By finishing a job on time and within budget, they can boost their bottom line and pursue other projects. Technologies now available can improve not only the productivity of field workforce but help increase safety as well.

—  
01 ABB ReliaGear™ family of UL - rated smart power distribution products

ABB acquired the GE Industrial Solutions business in 2018 and has combined the best of both companies' products, increasing installation efficiency, improving reliability, enhancing safety and enabling customized protection, to better support electrical contractors and their teams.

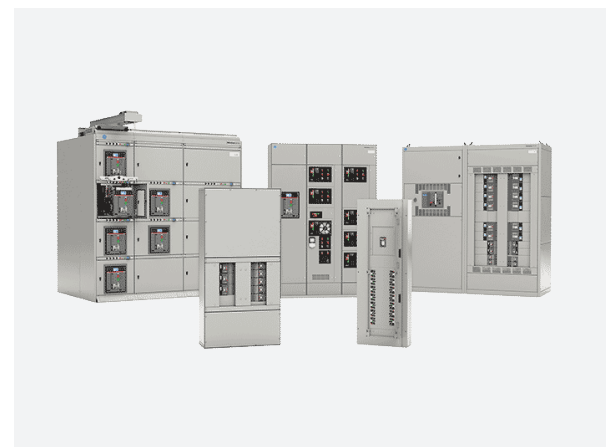
## Ease of Installation

The new ABB ReliaGear™ family of UL - rated smart power distribution products — ranging from panelboards to switchboards with advanced circuit breaker technology — helps companies to #ContractorBetter by expediting installation and lowering installation costs.

ABB designed its product portfolio with easy device monitoring and simple and fast commissioning in mind, helping project teams to cut installation and configuration time. For example, selective power coordination directly on the circuit breaker saves time in the field — up to 40 percent versus conventional circuit breakers.

Contractors will appreciate simplified installation with fewer bolt-on components, and easier field modification thanks to the ReliaGear™ neXT power panelboards and ReliaGear™ SB switchboards modular design. An electrician can install components in seconds with plug-in circuit breaker connections that maintain contact pressure over time even under short circuit conditions.

The ABB seven simple circuit breaker frames cover all amperages from 15 to 1200 A on the neXT power panel and SB switchboard, and the electronic trip units help simplify commissioning and remote monitoring. A single person can hang a panelboard interior using the bulk pack option. Electricians can also install or replace components in the field with a single tool. Hinged gutter doors on both the neXT power panel and SB switchboard allow for better wiring access, and components have fewer bolted joints for electricians to check and retorque.



02 ReliaGear™ neXT power panelboard

03 Tmax® circuit breakers



02

### Flexible Design

With the ReliaGear™ neXT power panelboard and ReliaGear™ SB switchboard electricians can install Tmax® XT circuit breakers anywhere on the bus stack. The neXT power panelboard bus stack itself can flip 180 degrees to accommodate top or bottom feeds without extra parts and the ground and neutral locations are field modifiable. The ReliaGear™ Pro-Stock Lighting panelboards offer a symmetrical design for top or bottom feed with a reliable main breaker or main lugs.

### Safety Considerations

On a construction project, electrical contractors focus on not only improving efficiency, but also enhancing safety. Today's ReliaGear™ smart power distribution products feature smart design, which not only streamlines installation, but also promotes a safer work environment.

For example, components in the ReliaGear™ neXT power panelboard can support their own weight. The enclosure design helps protect against finger abrasions, and the IP20 bus stacks are "finger safe". To help safeguard electricians in the field, the product line offers reduced energy let-through capabilities and remote monitoring, including condition monitoring when paired with an ABB Ability™ Energy & Asset Manager subscription. In addition, the circuit breakers in both the ReliaGear™ neXT power panel and the ReliaGear™ SB switchboard can utilize integrated Bluetooth® wireless technology, which makes it possible to set parameters and check measurements directly from your smartphone from an arc-free zone.



03

### Customized Protection

Beyond quick installation and safety considerations, electrical contractors may need to scale up the level of protection based upon the needs of the project. The smart circuit breaker technology in the ReliaGear™ family of products offers built-in functions for common requirements like metering and power protection, allowing easier measurement and monitoring of power with the built-in flexibility to add capabilities as needed.

When a job must be completed on time, on budget and on spec, contractors can opt for basic protection like that found in ReliaGear™ lighting, power panelboards and switchboards to lower installed costs and help ensure reliability.

In other cases, project requirements might call for products with built-in functionality and tested for coordination and selectivity, monitoring, and easy commissioning. In these instances, field-upgradable electronic trip units allow users to pay only for the protection and functionality needed for specific applications.

On projects where smart technology is required for analysis and diagnostics, the project team can opt for energy management, condition monitoring, and control through a full suite of products including low voltage switchgear, medium voltage switchgear and motor control centers.



Connectivity is essential. The ABB Ability™ digital technology platform offers real-time, cloud-based digital power distribution measurement, analysis, and management to help contractors meet their clients' needs. Condition monitoring and predictive maintenance can help reduce your customers' unintended downtime. By helping to stay ahead of potential failures, callbacks can be avoided.

Contractors who embrace condition monitoring might consider offering service contracts, creating a new revenue stream for your business. Users can collect relevant information from the devices installed in low-voltage power distribution systems and apply it to optimizing operations, implementing condition-based maintenance programs and more.

A multi-layered approach to security is also a must, and the ABB Ability™ platform closes the loop between connectivity, data, and asset management.

By exploring modern solutions like those found in the ReliaGear™ family of smart power distribution products, electrical contractors can find ways to grow their business and create new value through improved productivity and safety in the field.

**For more information about the ABB ReliaGear™ family of smart power distribution products, which includes the ReliaGear™ lighting panelboard, neXT power panelboard, SB switchboard, LV MCC motor control center, LV SG switchgear, ND MV SG switchgear, ND MV SG Digital switchgear, SACE® Emax 2 and Tmax® XT circuit breakers, and ABB Ability™ Energy & Asset Manager, visit their website. Contractors can also turn to their local distribution network and regional sales, application engineers and service teams for sales and support.**