

How to replace a CBXi-8R8(-H) with an FBXi-8R8(-H)

This document describes how to use an FBXi-8R8(-H) controller as a drop-in replacement for a previously-installed CBXi-8R8-H.

1	INTRODUCTION	1
2	SITE BACKUPS AND SMART ROUTERS.....	2
3	SITE DISCOVERY AND UPLOAD	2
4	REPLACE CBXI-8R8 WITH FBXI-8R8 IN CXPRO ^{HD}	4
	Step 1 – Make CXpro ^{HD} and the FBXi-8R8 use the same Device Instance for the FBXi-8R8.....	4
	Step 2 – Change the Device Type in CXpro ^{HD}	6
	Step 3 – Connect and Download	8
	Step 4 (optional) – Keypad Download	8

1 Introduction

This document assumes that:

1. A site tree is available that includes the CBXi-8R8 controller that is to be replaced and
2. The CBXi-8R8 has a working strategy associated with it.

This document also assumes experience with CXpro^{HD}.

In this example, screenshots will be shown from CXpro^{HD} with the CBXi-8R8 in place followed by a replacement of the CBXi-8R8 with a FBXi-8R8. The strategy will be a simple `sample app` strategy transferred over.

The CBXi-8R8 will be upgraded from firmware version 9.2.3 to FBXi-8R8 firmware version 9.2.3. The CXpro^{HD} version is 1.07.00. The process is the same regardless of firmare version and should work as described.

Because the CBXi-8R8 is a subset of functionality of the FBXi-8R8, there are no strategy issues that can arise by moving to an FBXi-8R8.

Note: Webpage backups (.tgz) from CBXi controllers should NOT be restored onto FBXi controllers.

2 Site Backups and Smart Routers

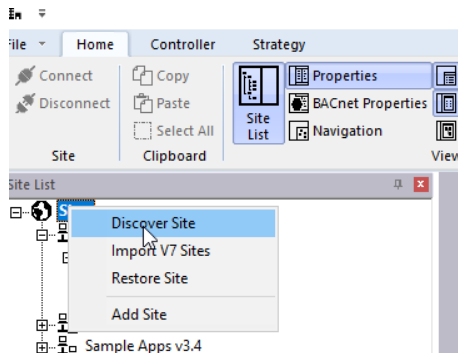
The table below shows an overview of the steps required depending on smart routers and site backups.

	Have Site Backup	No Site Backup – Functional CBXi-8R8	No Site Backup – Non-functioning CBXi-8R8
CBXi-8R8 – smart router not used	Proceed to the section titled “ <i>Replace CBXi-8R8 with FBXi-8R8 in CXpro^{HD}</i> ”.	It is imperative that you find a site backup for CXpro ^{HD} for the CBXi- 8R8 to be replaced.	
CBXi-8R8 – smart router used		If the CBXi-8R8 controller to be replaced is still functional, you may use Site Discovery in CXpro ^{HD} and upload the strategy from the controller. Proceed to the section titled “ <i>Site Discovery and Upload</i> ”.	It is imperative that you find a site backup for CXpro ^{HD} for the CBXi-8R8 to be replaced.

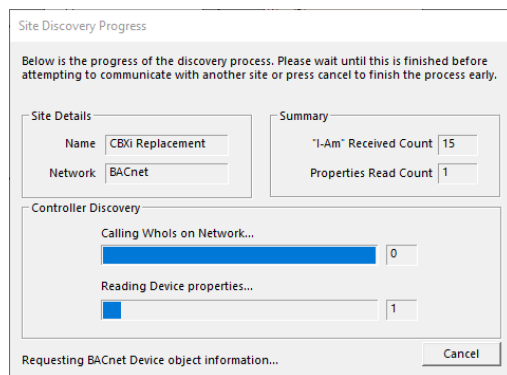
3 Site Discovery and Upload

If the CBXi-8R8 is still functional and has been used as a smart router, then it can be discovered in CXpro^{HD} to retrieve the strategy and configuration.

In the CXpro^{HD} right-click on the Sites icon at the top of the Site Tree and select Discover Site.



The network will be searched for all controllers.



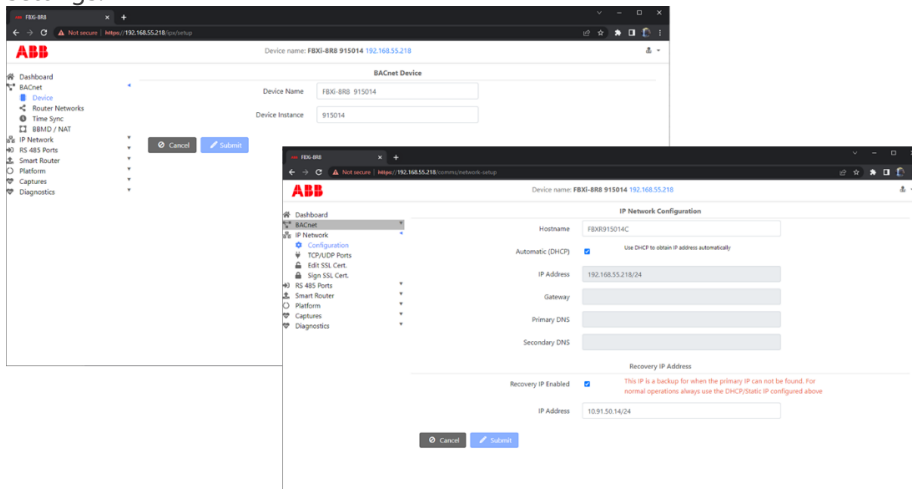
4 Replace CBXi-8R8 with FBXi-8R8 in CXpro^{HD}

The **FBXi-8R8** is a drop-in replacement for the **CBXi-8R8**. Refer to the following steps after the **FBXi-8R8** is installed and the wiring is replaced. Please remember that there is no need to replace any **FLX** modules.

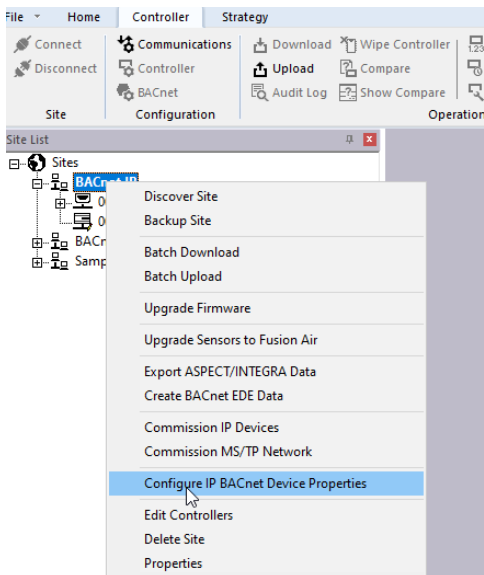
STEP 1 – MAKE CXPRO^{HD} AND THE FBXi-8R8 USE THE SAME DEVICE INSTANCE FOR THE FBXi-8R8

The device instance on the **FBXi-8R8** and **CXpro^{HD}** must match. This process is the same as setting up the IP and BACnet settings as per normal processes.

- 1) If the IP address is known, use the configuration web pages inside the **FBXi-8R8** to change network and BACnet settings.



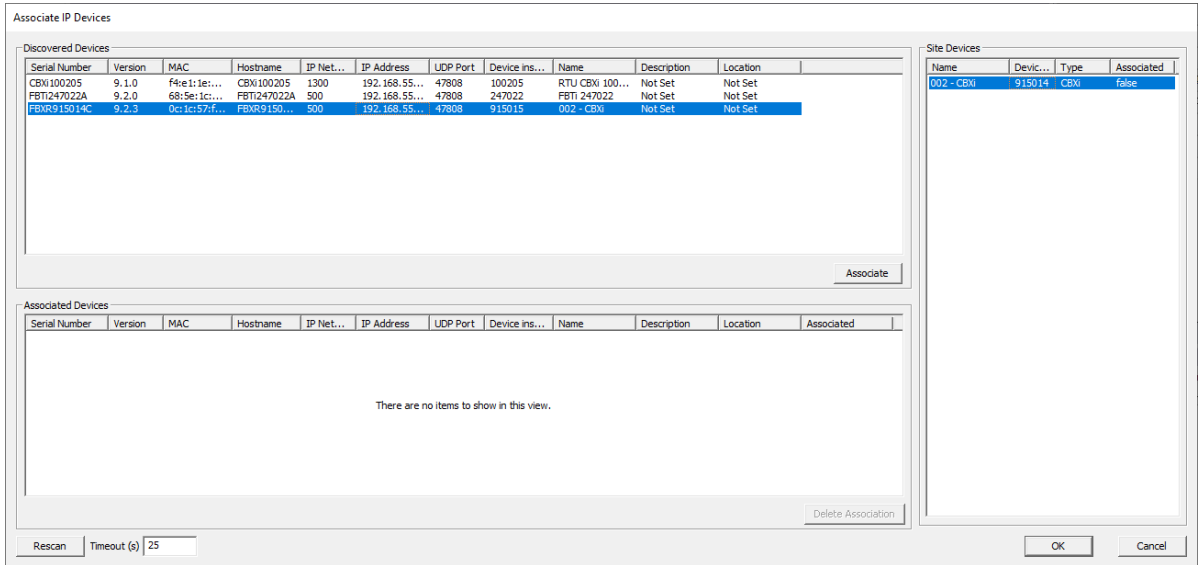
- 2) If the IP address is not known and a “crossover cable” connection between laptop and controller is available, the “back door” IP address may also be used – i.e. the `10.<serial number>` address. Note that the laptop must be configured for the same subnet mask and have unique static address on that subnet. Once the connection is established, use the configuration web pages inside the **FBXi-8R8** to change network and BACnet settings.
- 3) **CXpro^{HD}** can also be used to change the device instance number.



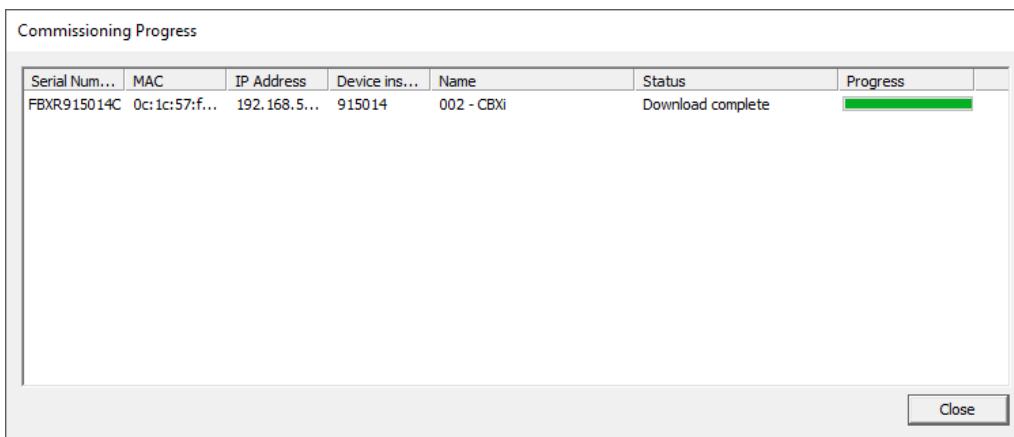
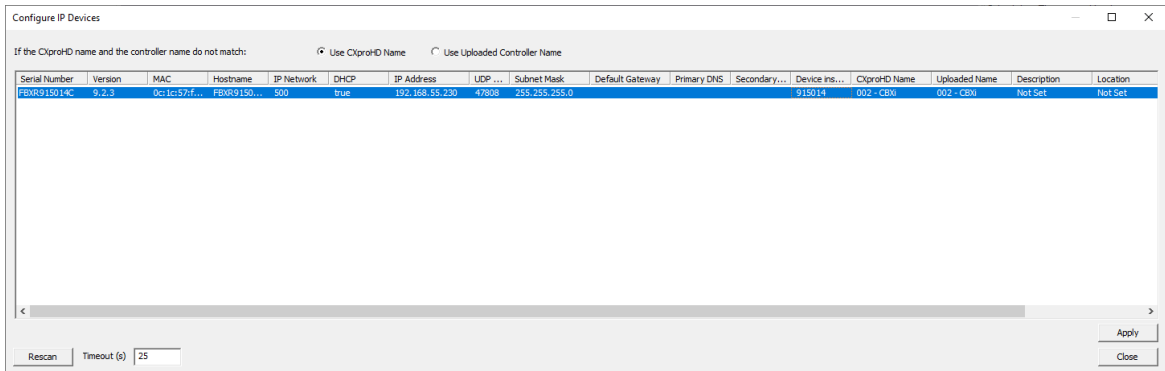
- 4)

Assign the newly installed FBXi-8R8 to the CBXi-8R8 entry in CXproHD's site tree as follows:

1. Select both the FBXi-8R8 that was discovered on the network, and the Site Devices that are stored in CXproHD and associate them.

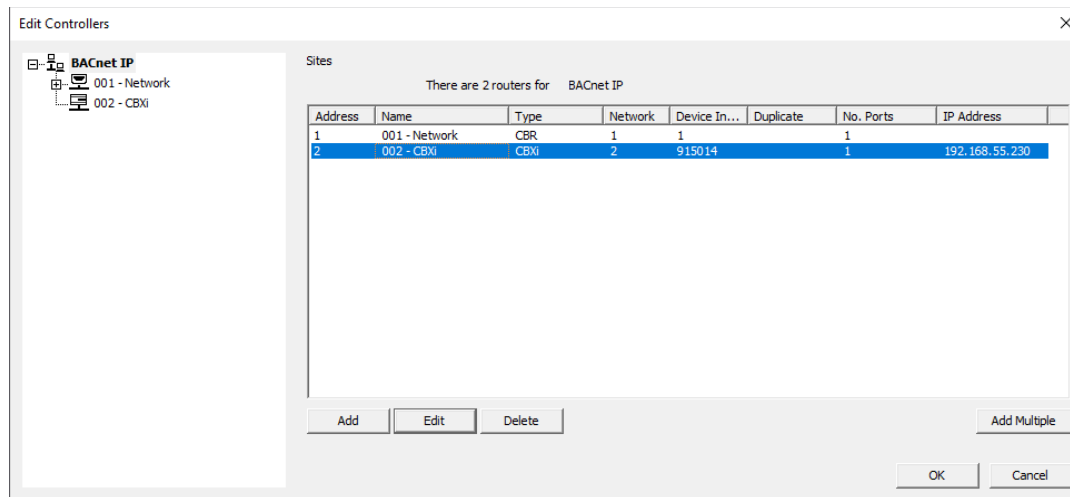
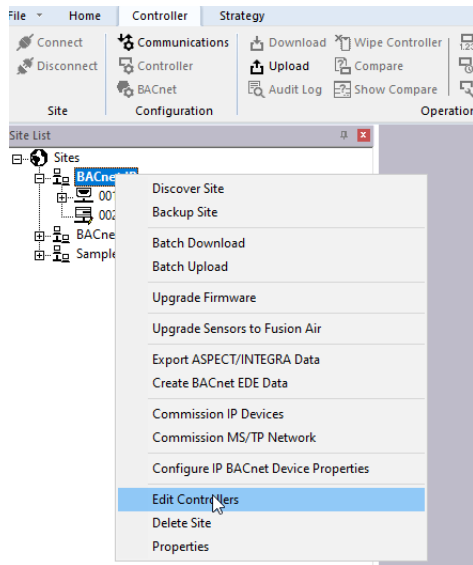


2. Change the device instance and network parameters on the newly-installed FBXi to match the CBXi-8R8 controller that was removed.



STEP 2 – CHANGE THE DEVICE TYPE IN CXPRO^{HD}

Select the CBXi-8R8 controller in the CXpro^{HD} Site Tree as shown below,



Click the **Edit** button to open the **Edit IP Controller/Router** dialog

Record the **Device Instance** value

Note: When the Controller Type is changed the Device Instance field will be cleared, so it is important to record the Device Instance value first

How to replace a CBXi-8R8(-H) with an FBXi-8R8(-H) | Replace CBXi-8R8 with FBXi-8R8 in CXpro^{HD}

Select to **FBXi-8R8-X96** in the **Controller Type** field:

Edit IP Controller / Router

Name: 002 - FBXi-8R8-X96
(001 - Network' or 'Network - 001')

Controller Type: **FBXi-8R8-X96**

Device Instance: (0 to 4194302)

IP Address: 192 . 168 . 55 . 230

BACnet Port: 47808

HTTPS Port: 443

MS/TP1 | MS/TP2 |
Network No.: 2

Enable BBMD - Router Level

IP Address: 0 . 0 . 0 . 0 47808

Time to Live: 60 seconds

Enable BACnet NAT

Modules

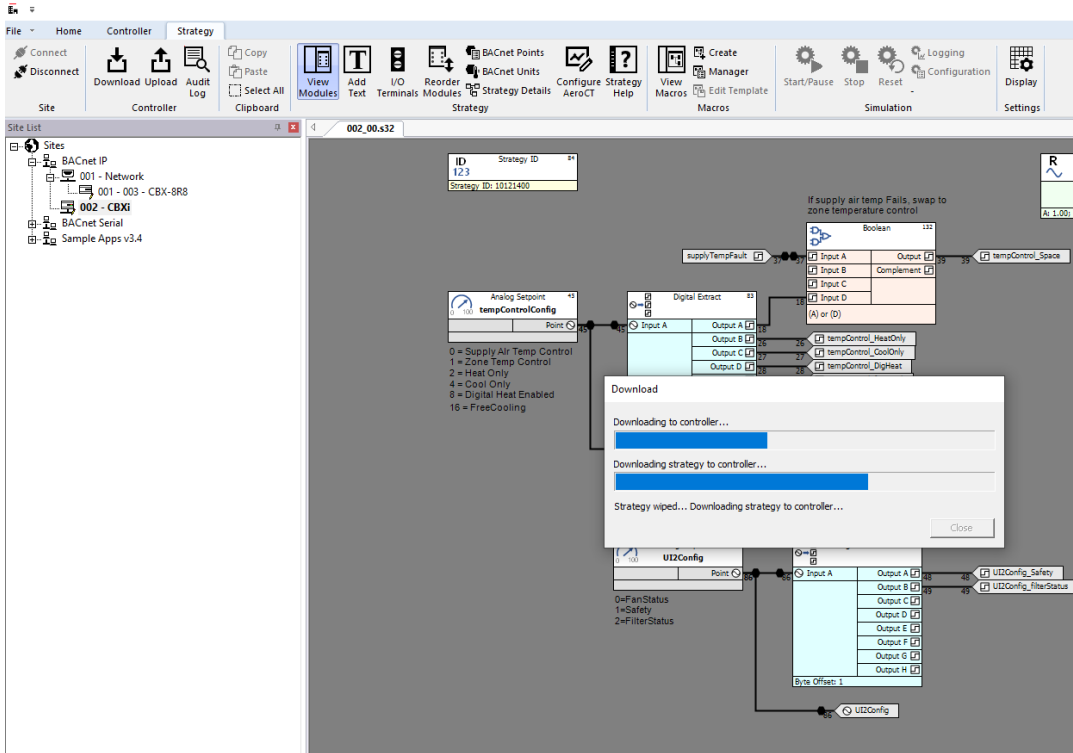
Addr...	Type	Dipswitch	
There are no items to show in this view.			

Device Instance Number must not be empty!

OK Cancel

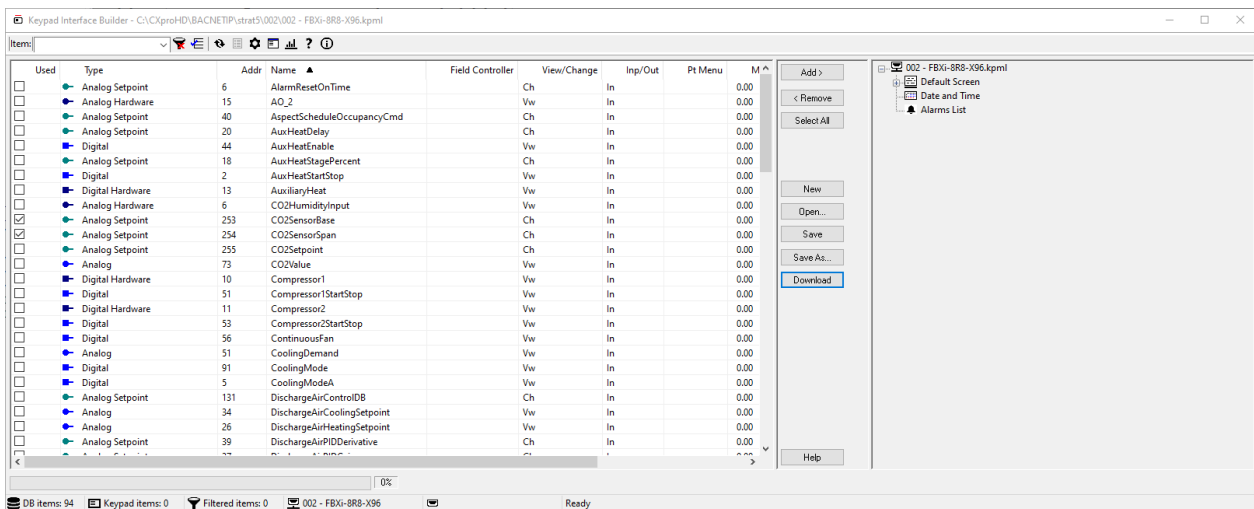
STEP 3 – CONNECT AND DOWNLOAD

Connect and download to the FBXi-8R8.



STEP 4 (OPTIONAL) – KEYPAD DOWNLOAD

If you have a keypad program in use with a eXplore touchscreen, download the keypad program to the FBXi-8R8.



At the conclusion of the download, the FBXi-8R8 will have successfully replaced the CBXi-8R8.