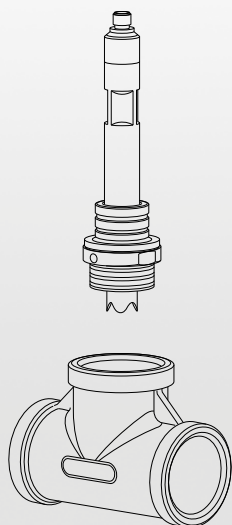


InLine Twist-Lock Adapter

1½ in bayonet kit



Introduction

This publication gives the assembly and instruction procedure for the InLine twist-lock adapter, for use with ABB's ¾ in sensors.

⚠️ ⚠️ WARNING

High pressure; High temperature

These procedures must be carried out by suitably trained personnel and in accordance with the information given.

Requirements

Table 1 Consumables required

Part number	Description	Quantity
—	PTFE tape	As required

Table 2 Tools required

Part number	Description	Quantity
—	Torque wrench (10 N·m)	1

For more information

Publications for the associated sensors and transmitters are available for free download from: abb.com/measurement, or by scanning this code:



¾ in pH/Redox (ORP) sensors – Operating instruction	OI/100/500/700
AWT440 multi-input transmitter – Operating instruction	OI/AWT440
AWT420 universal 4-wire single- and dual-input transmitter – Operating instruction	OI/AWT420
AWT440 multi-input transmitter – Data sheet	DS/AWT440
AWT420 universal 4-wire single- and dual-input transmitter – Data sheet	DS/AWT420

1 Safety

1.1 Safety hazards

The sensor operates with a maximum of 3.3 V DC. There are no hazardous voltages present in the sensor.

WARNING

High pressure; High temperature

These procedures must be carried out by suitably trained personnel and in accordance with any local regulations and practices.

2 Specifications

Materials

Collar and twist-lock adapter
316 stainless steel

O-rings

Silicone
Viton®

Operating process pressure

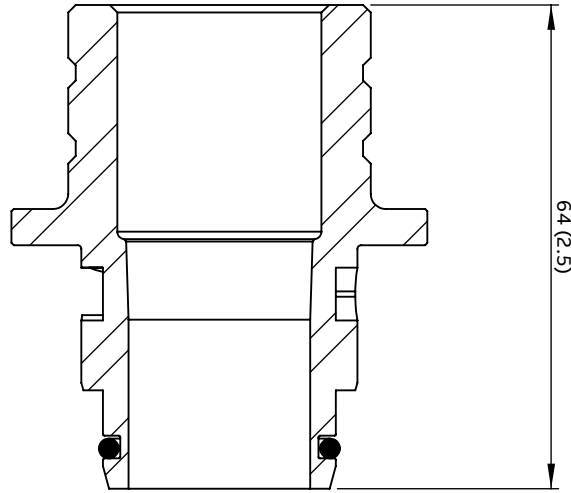
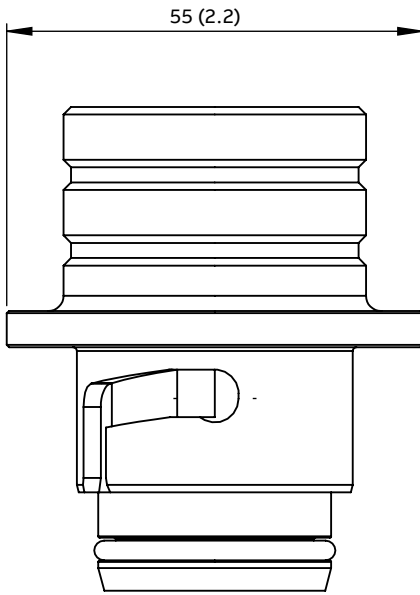
Maximum: 6.9 bar (100 psi)

Operating process temperature

Maximum: -20 to 60 °C (-4 to 140 °F)

3 Dimensions

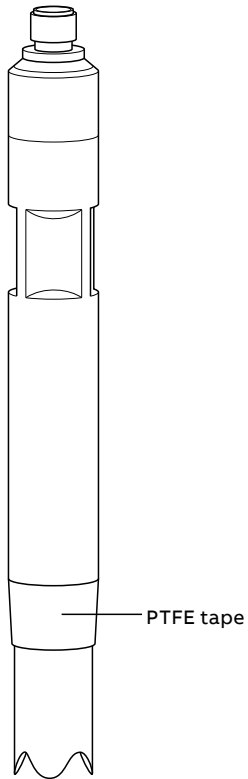
Dimensions shown in mm (in).



01 InLine twist-lock adapter dimensions

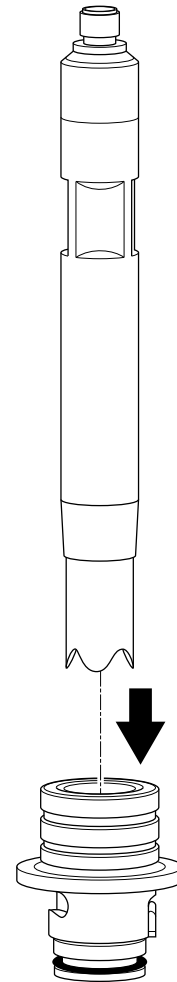
4 Installation

- 1 Wind two to three wraps of PTFE tape around the lower threads of the sensor body.



○2 Lower threads of the sensor

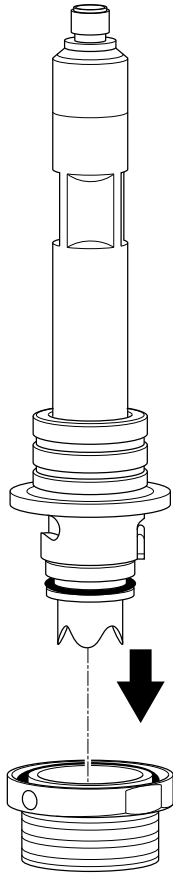
- 2 Connect the sensor to the collar.



○3 Connect the sensor

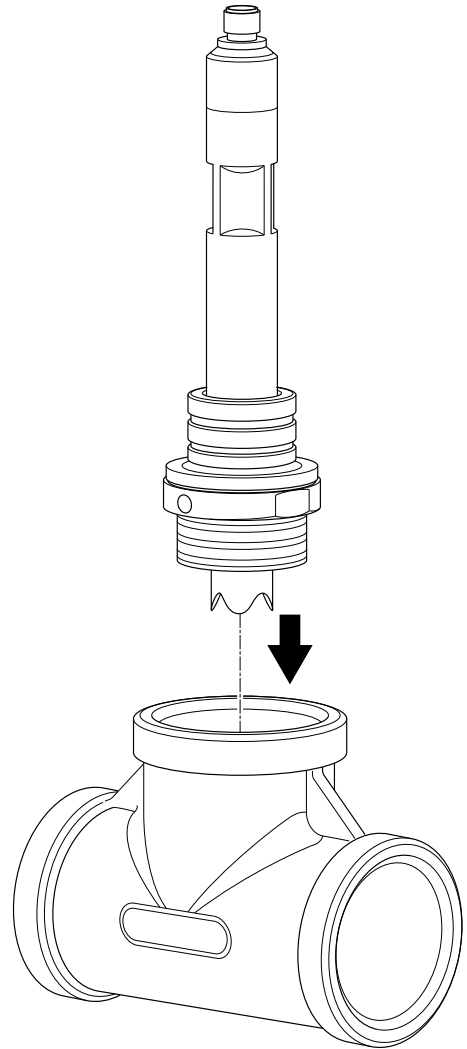
- 3 Torque the sensor to 10 N·m (7.45 lbf·ft).

4 Connect the sensor and collar assembly to the twist-lock adapter.



04 Install to the twist-lock adapter

5 Install the assembly to the T-piece pipe connection.





05 Connection to T-piece

Note:
The T-piece pipe connection is not ABB-supplied.

5 Spares and accessories

Table 3 Spares and accessories

Part number	Description	
3KXA163600L0001	InLine twist-lock adapter O-rings	
3KXA163600L0002	InLine ¾ in twist-lock adapter	

Notes

—
ABB Ltd.
Oldends Lane
Stonehouse
Gloucestershire
GL10 3TA
United Kingdom

abb.com/measurement

—
We reserve the right to make technical changes or modify the contents of this document without prior notice. With regard to purchase orders, the agreed particulars shall prevail. ABB AG does not accept any responsibility whatsoever for potential errors or possible lack of information in this document.

We reserve all rights in this document and in the subject matter and illustrations contained therein. Any reproduction, disclosure to third parties or utilization of its contents – in whole or in parts – is forbidden without prior written consent of ABB AG. Copyright© 2026 ABB
All rights reserved