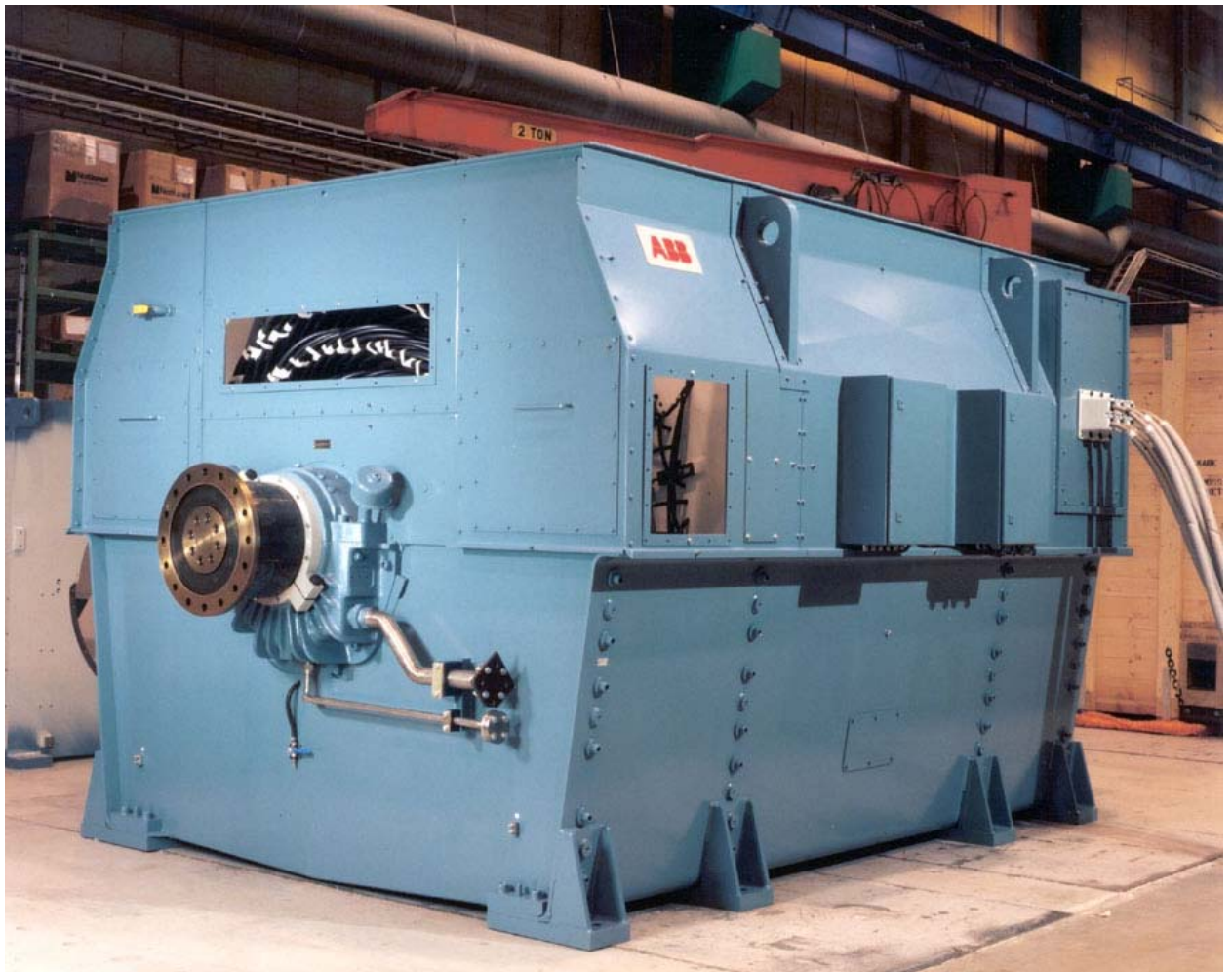


Environmental Product Declaration

for AC-machine Motorformer type AMT 1250.



Organizational framework

Manufacturer:

ABB Automation Technology Products AB
Machines (ATMM/M)
S-721 70 Västerås, Sweden
tel: +46/21/32 90 00
fax: +46/21/32 95 10
Contact person EPD: Anders Allander

ATMM/M belongs to the **Business Area**
Automation Technology Electrical Machines
ATEM, with 13 sites. It has sites in Finland, France,
Italy, South Africa, Sweden, Switzerland, Spain,
India and China.

Environmental management: The ISO 14001 international environmental management standard has been implemented at eleven of the thirteen sites. Motorformer AMT type AC machines are manufactured at the Swedish site, which has been certified to ISO 14001 since early 1997. Life cycle assessment is applied continuously to all product development.

Product description: ABB's line of synchronous machines –motors and generators- consists of four product families. The Motorformer-family, 4- and high voltage machines, was introduced 2001. The AMT has been developed to fulfil the highly variable needs of many different industrial applications, such as:

- Paper industry:
- Refiner motors
- Steam turbine generators
- Steel industry:
- Gas turbine generators
- Fan motors
- Blower motors
- Power applications:
- Pump motors

The studied product is a AC-machine called AMT. The total range of rated output is 4 MW to 70 MW for motors. This type of motor is possible to directly connect to the High Voltage line which means that it does not need any transformer in order to work at lower voltage. Due to this the Motorformer must be studied in a wider system in order to observe the complete benefits.

Material according to the table below is used for the product:

Summary of materials

Type of material	kg/product AMT 1250	kg/kW AMT 1250
Electro steel	50644	7.791
Normal rolled steel	18012	2.771
Special steel	2 432	0.374
Cast iron	1 063	0.164
Aluminium	57	0.009
Copper	3 562	0.548
Insulation material	1 635	0.252
Wooden boxes and plank:	3 350	0.515
Impregnation resin	20.08	0.003
Paint	14	0.002

The plant that manufactures these motors has been certified to the ISO 9001 quality management standard since 1993.

Environmental performance

The data and calculations are in accordance with Product Specific Requirements (PSR) for Rotating Electrical Machines dated April 2000 which specifies the following baselines for the LCA calculation.

Functional unit

The functional unit for the LCA is 1 kW of rated output power.

System boundaries

The life cycle assessment covers all environmental aspects for extraction and production of raw materials, manufacturing of main parts, assembly of the machine, transportation and use of the product, dismantling, fragmentation and disposal and recycling of scrap after end of life. It includes consumption of material and energy resources as well as emissions and waste generation.

Calculations are based upon an estimated lifetime of 25 years when operating 6,500 hours per year. A Swedish mix of energy has been used for calculating energy consumption during manufacturing and a European mix of energy for calculating energy consumption during use and disposal.

The AMT 1250 of 6 500 kW has been chosen as the extremes of the range when calculating the Life Cycle Assessment.

The operational point chosen for the usage phase is 1500 rpm and efficiency 97,93% for the AMT 1250. The operational point in reality will vary considerably dependent upon the specific application.

Allocation unit

The factor for allocation of common environmental aspects during manufacturing is calculated as the rated output power of the product in relation to the total annual production volume in kW.

Resource utilization

Inventory	Manufacturing phase	Usage phase	Disposal phase
	AMT 1250	AMT 1250	AMT 1250
Use of non-renewable resources			
Iron (Fe) kg/kW	5.18	0.00	-5.67
Aluminium (Al) kg/kW	0.00	0.00	-0.00
Manganese (Mn) kg/kW	0.04	0.00	-0.00
Copper (Cu) kg/kW	0.48	0.04	-0.51
Uranium (U) kg/kW	0.0004	0.0362	-0.00
Coal kg/kW	7.2	940.77	-5.94
Oil MJ/kW	103.70	4 215.602	-0.33
Gas MJ/kW	39.15	3 376.22	-11.24
Use of renewable resources			
Wood kg/kW	0.52	0.00	0.00
Hydro power MJ/kW	0.11	0.05	0.00

Energy consumption and losses

Energy form	Absolute requirements			Requirement per unit of output power		
	kWh/product			kWh/kW		
	Manufacturing phase	Usage phase	Disposal phase	Manufacturing phase	Usage phase	Disposal phase
	AMT 1250	AMT 1250	AMT 1250	AMT 1250	AMT 1250	AMT 1250
Electrical energy	18 100	22 330 000	1 290	2.42	2 977	0.17
Heat energy	13 500			1.80		

Waste

Relative weight per unit of Output power	kg/kW AMT 1250
Hazardous waste after manufacturing	
Barrier water	0.007
Water from oil separator	0.015
Oil emulsions	0.007
Hazardous waste after end of life	
Various	0.004
Regular waste (to landfill)	
During manufacturing	0.003
At final disposal	0.292

Recycling is recorded in Resource utilization at Disposal phase

The classification data for emissions are as below:

Category of impact	Equivalent unit per kW	Manufacturing AMT 1250	Usage phase AMT 1250	Total life cycle AMT 1250
Global warming GWP	kg CO ₂ /kW	38.28	1 730	1 768
Acidification	kmol H ⁺ /kW	0.01	0.34	0.35
Ozone depletion ODP	kg CFC-11/kW	0.0000	0.0001	0.0001
Photochemical oxidants POCP	kg ethylene/kW	0.052	0.414	0.46
Eutrophication	kg O ₂ /kW	0.73	22.04	22.77

The values are based upon the indexes specified in the document from The Swedish Environmental Management Council (AB Svenska Miljöstyvningsrådet) named MSR 1999:1.

Additional qualifying factors

Recycling and disposal

The main parts of the product can be recycled. Some parts need to be fragmented to separate different types of material. A list of parts and components that can be fragmented and recycled can be obtained from the manufacturer. See references.

Usage phase in relation to the total

It is to be observed that the environmental impact during the usage phase is the most important. As an example, GWP for the usage phase is approximatively 300 times larger than GWP for the manufacturing phase.

Category of impact	Usage in % of total AMT 1250
Global warming GWP	98.70
Acidification	97.63
Ozone Depletion ODP	99.34
Photochemical oxidants POCP	89.90
Eutrophication	97.67

References

- ❑ LCA report R MKU 2002-11, LCA for AMT 1250.
- ❑ Return of Natural Capital (RCN) analysis for Motorformer
- ❑ PSR 2000:2 for Rotating Electrical machines
- ❑ Recycling and disposal 3BSE 017 435
- ❑ Risk assessment 3BSE 017 434
- ❑ LCA instruction 3BSG000021
- ❑ MSR 1999:1 Bestämmelser Certifierade Miljövarudeklarationer, EPD from the Swedish Environmental Management Council

The above mentioned documents are available upon request.

GLOSSARY

Acidification, AP. Chemical alternation of the environment, resulting in hydrogen ions being produced more rapidly than they are dispersed or neutralized. Occurs mainly through fallout of sulfur and nitrogen compounds from combustion processes. Acidification can be harmful to terrestrial and aquatic life.

Eutrophication. Enrichment of bodies of water by nitrates and phosphates from organic material or the surface runoff. This increases the growth of aquatic plants and can produce algal blooms that deoxygenate water and smother other aquatic life.

Global warming potential, GWP. The index used to translate the level of emissions of various gases into a common measure to compare their contributions to the absorption by the atmosphere of infrared radiation. GWPs are calculated as the absorption that would result from the emission of 1 kg of a gas to that from emission of 1 kg of carbon dioxide over 100 years.

Life cycle assessment, LCA. A management tool for appraising and quantifying the total environment impact of products or activities over their entire life cycle of particular materials, processes, products, technologies, services or activities. Life cycle assessment comprises three complementary components-inventory analysis, impact analysis and improvement analysis.

Ozone depletion potential, ODP. The index used to translate the level of emissions of various substances into a common measure to compare their contributions to the breakdown of the ozone layer. ODPs are calculated as the change that would result from the emission of 1 kg of a substance to that from emission of 1 kg of CFC-11 (a freon)

Photochemical ozone creation, POCP. The index to translate the level of emissions of various gases into a common measure to compare their contributions to the change of ground-level ozone concentration. POCPs are calculated as the change that would result from the emission of 1 kg of a gas to that from emission of 1 kg of ethylene.



ABB Automation Technology Products AB Machines

721 70 Västerås

Sweden

Telephone. +46 21-32 90 00

Telefax: +46 21-32 95 10

www.abb.com/motors&drives