

We reserve all rights in this document and in the information contained therein. Reproduction, use or disclosure to third parties without express authority is strictly forbidden. © ABB 19

Pos. Lage	R connects förbinder	H connects förbinder	
1	12-13	2-15	
2		3-15	
3		4-15	
4A		5-15	
4		6-15	
5		7-15	
6A		8-15	
6		9-15	
7A		10-15	
7B		11-15	
7		12-14	12-15
7C			1-15
7D			2-15
7E	3-15		
8	4-15		
9	5-15		
10	6-15		
10A	7-15		
11	8-15		
12	9-15		
12A	10-15		
13		10-15	

A position with letter is a through position and gives the same voltage as the normal position.

Läge med bokstav är ett genomloppsläge och ger samma spänning som normalläget.

On-load tap-changer type UZER., UZFR., 13 tap positions, plus/minus switching.

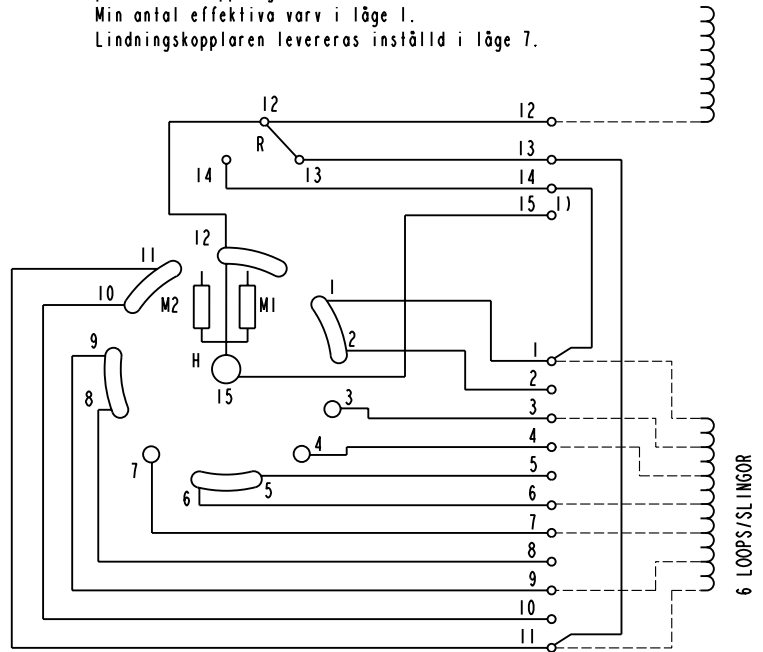
Min effective No. of turns in pos. 1.

The tap-changer is delivered set in pos. 7.

Lindningskopplare typ UZER., UZFR., 13 lägen, plus/minus-koppling.

Min antal effektiva varv i läge 1.

Lindningskopplaren levereras inställd i läge 7.



The tap-changer is shown in pos. 7  
Lindningskopplaren visad i läge 7

R Change-over selector  
Plus/minus-omkopplare

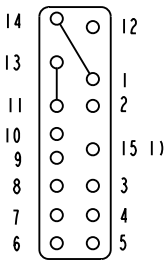
H Main contact  
Huvudkontakt

M1, M2 Transition contacts  
Motståndskontakter

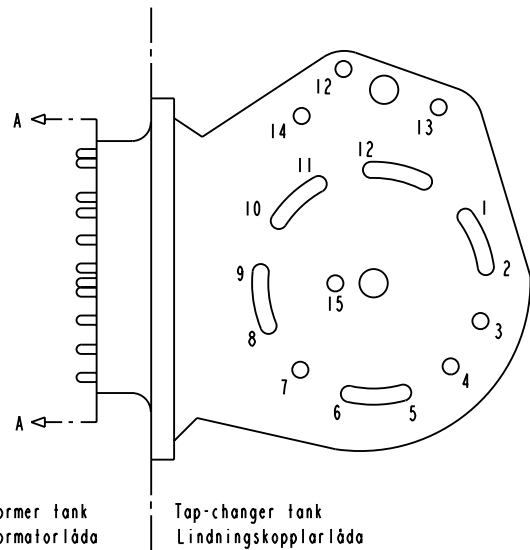
1) Connections between the terminals 15 of the three phases are included in the star-point type.

Förbindningar mellan uttag 15 i de tre faserna ingår i nollpunktsutförandet.

Terminal board Plint



Section A-A  
Sektion A-A



Transformer tank  
Transformatorlåda

Tap-changer tank  
Lindningskopplarlåda

Sheet	Cont
Year	Week
Dept	
Rev Ind	Revision
Rev Ind	Revision
Design checked by	Design checked by
Form No.	

-	-	-	-	-
Rev Ind	Revision	Appd	Year	Week
Accepted for qual control R. Yngvesson		Accepted for prod by		Description (English) CONNECTION DIAGRAM
Design checked by B-O. Stenestam		Drawn by L. Bergman		Description (own language) KOPPLINGSSCHEMA
Drawing checked by M. Hedlund		Issued by Dept Year Week COM/TKO 97 33		DATA ORIGINAL
5492 0397-3				File name 0397-3
				Lang Sheet 1
				Rev Ind Cont -



Asea Brown Boveri