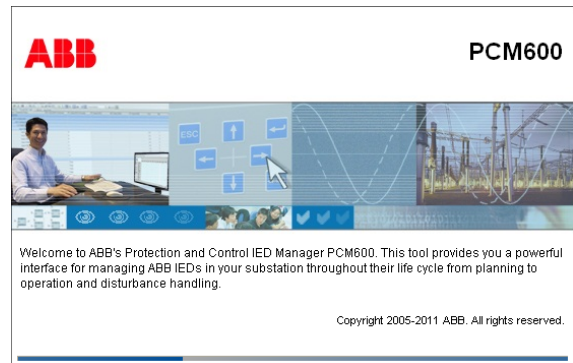


Protection and control IED manager PCM600 Ver. 2.5 Release Note

Dear Reader,

A new version (2.5) of Protection and control IED manager PCM600 has been released. PCM600 provides versatile functionalities for the entire life cycle of all Relion® protection and control IED applications, at all voltage levels.



New features and benefits / feature enhancements

- Online/Offline IED configuration comparison
- Graphical representation of distance protection function
- Support for multiple PCM600 versions on the same computer
 - PCM600 Ver. 2.5 can get installed on computer with existing previous PCM600 version
- Simplified variant concept, without license and free of charge
 - Complete IED tool functionality included in one variant
 - The IEC 61850 engineering module, included in previous PCM600 Ver. 2.4 EP (Engineering Pro), is now available as standalone product called: "IET600 - Integrated Engineering Tool"
 - PCM600 Ver. 2.5 can be downloaded from [ABB Substation Automation Software Library](#)
- Comparison of SCL configuration in PCM600 and SCD file for identification of difference in SCL data
- Customization of IED tool menus, customize visibility of tools according to user needs
- Improved short report tool for easy analysis of disturbance files
- Improvements in application configuration
 - Improved, more intuitive find feature
 - Grouping of function blocks, variables, connections
- Increased system size (# IEDs in same project) when engineering large systems
- Template support in Graphical Display Editor tool for reuse of display engineering
- Improved navigation between function block in application configuration and its parameters
 - Parameter setting tool shows corresponding parameters of a selected function block in application configuration tool
- Optimized overview in signal matrix tool
- Export subset of parameter settings to csv or XRIO

ABB Oy
Distribution Automation
P.O.Box 699
FI-65101 Vaasa, Finland
Phone: +358 10 22 11
Fax: +358 10 22 41094

ABB AB
Substation Automation Products
SE-72159 Västerås, Sweden
Phone: +46 21 35 20 00
Fax: +46 21 14 69 18

Power and productivity
for a better world™



Protection and control IED manager PCM600 Ver. 2.5

Release Note

- Improved user interface and usability of ICM tool (IED configuration migration)
- New IEC 61850 configuration tool of PCM600 provides viewing or engineering of dataset and dataflow configuration for vertical or horizontal IEC 61850 communication
 - View mode, for transparency of IEC 61850 configuration
 - Engineering mode, allows dataset engineering or dataflow configuration
 - Recommendation how to use the new PCM600 IEC 61850 tool component:

	IEC 61850 tools in a Substation automation system (SAS)	
	no external tool	IET600 or 3rd party system tool
ABB Relion IEDs	Engineering mode ¹⁾	View mode ²⁾
ABB & 3 rd party IEDs	View mode ²⁾	View mode ²⁾

¹⁾ Engineering mode of IEC 61850 configuration tool of PCM600 is recommended for simple applications. Advanced applications requires IEC 61850 system tool like IET600, and View mode ²⁾.

²⁾ View mode of IEC 61850 configuration tool of PCM600 for transparency of IEC 61850 configuration made by external IEC 61850 system tool like IET600

Documentation

The following documentation is available in the PCM600 software package and in the [ABB Substation Automation Software Library](#):

- PCM600 Installation Sheet
- PCM600 Readme file
- PCM600 Product Guide

The user documentation is available as on-line help in PCM600.

Technical requirements on environment

Hardware and software requirements:

- The supported operating systems and hardware requirements are described in the PCM600 Installation guide.
- Using PCM600 requires that the applicable IED Connectivity package has been installed.

The connectivity packages can be downloaded from the Update Manager of PCM600. Furthermore

ABB Oy
Distribution Automation
P.O.Box 699
FI-65101 Vaasa, Finland
Phone: +358 10 22 11
Fax: +358 10 22 41094

ABB AB
Substation Automation Products
SE-72159 Västerås, Sweden
Phone: +46 21 35 20 00
Fax: +46 21 14 69 18

Power and productivity
for a better world™



Protection and control IED manager PCM600 Ver. 2.5 Release Note

the IED Connectivity packages for 670 and 650 series are also available on separate IED Connectivity package DVD that is delivered together with the IEDs, whereas the IED Connectivity packages for 630, 620, 615, 611, 610, RIO600, REX521, RE_54_, SPACOM and REF 542plus can be downloaded from the www.abb.com/substationautomation portal.

Products supported in this release

PCM600 supports the following protection and control products:

- Relion protection and control products: 670, 650, 630, 620, 615, 611, and 610 series
- RIO600
- REX521 and RE_54_ series
- Selected SPACOM relays
- REF 542plus

Features and benefits in recently released versions of PCM600

PCM600 Ver. 2.4 SP1 (released in February 2012)

- The PCM600 and PCM600 Engineering variants both includes complete application configuration functionality
- No license or software activation is required neither for PCM600 nor PCM600 Engineering
- Support for Windows 7, 64bit operating system
- Several improvements to facilitate the migration of projects created in earlier versions of PCM600

PCM600 Ver. 2.4 (released in June 2011)

- Increased amount of IEDs within same application to support large systems
- Export of parameter settings to csv format (comma separated value format)
- Graphical Display Editor has been enhanced with zooming, link handling and snap to grid features
- Faster printing and increased print quality of application configurations
- Improved graphical layout when migrating configurations made using PCM600 Ver. 1.5
- Improved migration report when migrating a configuration to a later version of an IED
- New communication engineering module for the IEC 61850 engineering in the PCM600 Engineering Pro variant
- The communication management module now supports the handling of the IEC 60870-5-101/104 protocols

ABB Oy
Distribution Automation
P.O.Box 699
FI-65101 Vaasa, Finland
Phone: +358 10 22 11
Fax: +358 10 22 41094

ABB AB
Substation Automation Products
SE-72159 Västerås, Sweden
Phone: +46 21 35 20 00
Fax: +46 21 14 69 18

Power and productivity
for a better world™



Protection and control IED manager PCM600 Ver. 2.5 Release Note

- PCM600 is now available for downloading from the PCM600 product page at <http://www.abb.com/substationautomation> using ABB Substation Automation Software Library (with direct URL: <https://www143.abb.com/SoftwareLibrary>)

IED Connectivity package support for PCM600 Ver. 2.5

For the best performance we recommend the latest versions/revisions of IED Connectivity packages available in the PCM600 Update Manager to be used together with PCM600 Ver. 2.5.

Life cycle statement

PCM600 Ver. 2.5 will replace the versions 1.5, 2.0 up to version 2.4.1 of PCM600.

The IEC 61850 communication engineering module IET600 Ver. 5.1, previously included in PCM600 Ver. 2.4 Engineering Pro, gets replaced by IET600 - Integrated Engineering Tool Ver. 5.2.

The replaced versions will be moved to obsolete phase in the software life cycle policy, which means that they will no longer be maintained.

Ordering and delivery information

The previous variant concept of PCM600 gets simplified with PCM600 Ver. 2.5.

- The IEC 61850 engineering module IET600, included in former PCM600 2.4 Engineering Pro, is now available as stand alone product "IET600 - Integrated Engineering Tool"
- PCM600 Ver. 2.5 is available in one variant, including complete PCM600 functionality (except IET600), without license and free of charge

PCM600 Ver. 2.5 is license free and can be downloaded free of charge from the [ABB Substation Automation Software Library](#).

PCM600 can also be ordered on a CD using the following ordering number:

Software	Ordering number
PCM600 Ver. 2.5	PCM600-25

ABB Oy
Distribution Automation
P.O.Box 699
FI-65101 Vaasa, Finland
Phone: +358 10 22 11
Fax: +358 10 22 41094

ABB AB
Substation Automation Products
SE-72159 Västerås, Sweden
Phone: +46 21 35 20 00
Fax: +46 21 14 69 18

Power and productivity
for a better world™



Protection and control IED manager PCM600 Ver. 2.5 Release Note

Installation

The installation of PCM600 Ver. 2.5 gets started by running the installation program (Setup.exe). Different to previous PCM600 Ver. 2.4, PCM600 Ver. 2.5 does not include any licensing; license activation is no further required for PCM600 Ver. 2.5.

Recommendation

We recommend to use latest PCM600 version 2.5 together with latest available versions of IED Connectivity packages for new projects.

Known limitations and supporting information

For technical limitations and supporting information, please refer to the PCM600 readme file.

Main functionality

The Protection and control IED manager PCM600 tool provides versatile functionalities for the entire life cycle of all Relion protection and control IED applications, at all voltage levels. This easy-to-handle tool helps you manage your protection and control equipment all the way from application and communication configuration to disturbance handling, including automatic disturbance reporting.

Designed to communicate, PCM600 interacts with IEDs over the fast and reliable TCP/IP via corporate LAN or WAN, or alternatively directly through the communication port at the front of the IED. PCM600 tool is able to read and write all configuration and setting data of an IED with a single command.

The user interface, workflow and the IEC 61850-based data model in PCM600 are designed according to the same philosophy as the Relion protection and control IEDs, ensuring smooth and seamless integration between the tool and the IEDs.

PCM600 also secures the projects and data created with earlier versions of the PCM600 tool, which enables full backwards compatibility.

Yours faithfully,

Beat Schütz
Global Product Manager
Substation Automation Products

Martin Nykvist
Product Manager
Distribution Automation

ABB Oy
Distribution Automation
P.O.Box 699
FI-65101 Vaasa, Finland
Phone: +358 10 22 11
Fax: +358 10 22 41094

ABB AB
Substation Automation Products
SE-72159 Västerås, Sweden
Phone: +46 21 35 20 00
Fax: +46 21 14 69 18

Power and productivity
for a better world™

