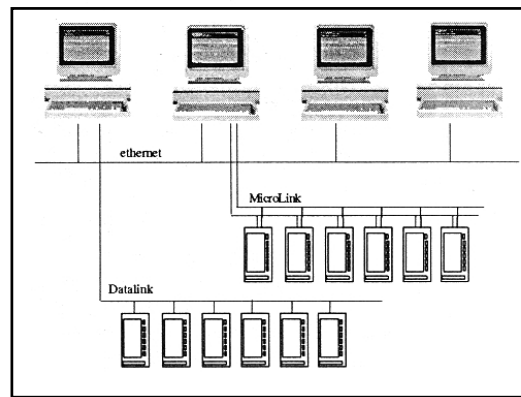
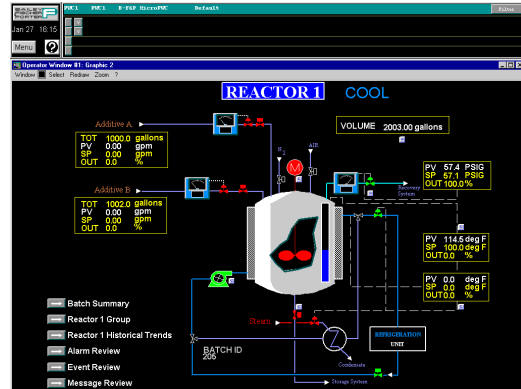


- Intuitive System Hierarchy Displays
- Quick Keys and CRT Context Keys direct Display Access “buttons”
- Up to Four Dynamic Process Display Windows per CRT Display
- Up to 1024 Network Wide Graphic Displays
- System and User Help Menus with Each Display Window
- Flexible Nine Level System Security with Assignable Functions and User Accounts
- Up to 1024 Network Wide 8-trace Historical/Archival Trend Display Pages including Zoom Capability and Time Compression.
- 64 Definable Alarm Areas
- 16 Alarm Priorities
- Built-in Alarm and Event Historian
- Built-in Global Data Historian
- Global Database Access
- ISA S5.C Graphical Object Library

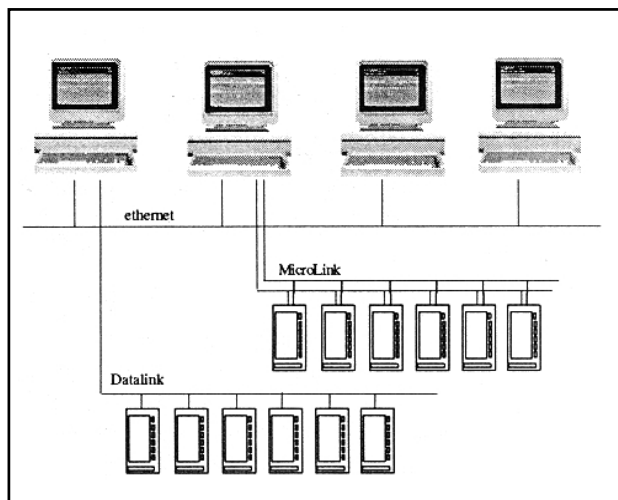


**Series 53PW6000  
Micro-PWC**

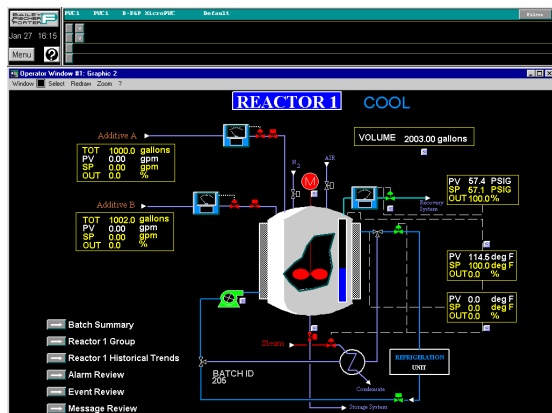
## MICRO-PWC

The Micro-PWC (Personal Work Center) 53PW6000 is a personal computer based human-machine interface (HMI) package designed for process monitoring and control within the ABB Micro-DCI System network architecture. The 53PW6000 is a complete application software package with standard imbedded functionality modules and optional add-on features. Process operators can monitor and control all analog loops and discrete devices linked to the process network. The process engineer can configure displays, change process control strategies, format reports, and assign security access levels to other users. Maintenance personnel can monitor the operating status of any system component on the network and diagnose component failures.

The 53PW6000 includes a library of preconfigured dynamic display templates specifically designed for analog and discrete I/O monitoring, regulatory control, alarm management, and trending. A standard display hierarchy is included to simplify the assignment of tags to Summary, Group and Single point displays. Each package includes an ISA library of object oriented dynamic symbols. Users can modify any of the standard templates and symbols for specific applications. Also included is the built-in capability to configure displays, graphics, and process instrumentation. A comprehensive alarm management package enables users to easily sort, acknowledge, and take corrective action to process upset conditions. DDE capability allows the 53PW6000 to easily exchange data between its global database and other Windows® applications running on the same platform or across the network. Custom reports can be created using EXCEL® spreadsheet and linked to the Micro-PWC's global database. The 53PW6000 application runs on an industry-standard Pentium™ PC platform under the Windows NT™ operating system. Ethernet TCP/IP network communications with other Micro-PWC's is a standard feature.



- **Innovative Window Displays** - Each Micro-PWC provides four full-function, freely assignable operator windows - selected, altered, or rearranged using simple point-and-click action. Each screen also includes dedicated mini-alarm and configuration windows. The pre-configured display hierarchy allows users to easily assign over 24,000 tags to Summary, Group and Single Point displays.
- **Comprehensive Alarm Management** - Manage up to 64 definable plant areas in real time. Sort alarms by area, priority, or time. Inhibit alarms or route them to networked printers or disk.
- **Event Management** - Monitor events and nonprocess related alarms such as user login, controller power-up and operator acknowledgment. Display events by message type or chronologically.
- **On-Line HELP** - The HELP feature instantly provides on-line access to operating manuals and configuration guides, displayed on the Micro-PWC screen. User configurable displays can provide site-specific instructions for operating procedures, batch preparation instructions, emergency shutdown procedures, etc.
- **System Security** - Provides multiple levels of access for operating, engineering and supervisory personnel. Each security level permits access to certain assignable functions such as configuration, control, node access, and manual data entry.
- **Quick Keys** - A pop-up 64 key video keypad saves time in calling up frequently viewed displays to any operator window. Quick keys can be personalized, sized, and relocated to suit each user.
- **CRT Context Keys** - Bypass key strokes needed to open multiple operator windows; quickly call up as many as four display windows at-a-time related to a specific operation or area. Context keys can also be personalized for each user.
- **Network Synchronization** - Automatic database and display configuration synchronization between networked Micro-PWCs.



## OPTIONS

- **DDE** - Dynamic Data Exchange (DDE) connectivity allows connection of the Micro-PWC global database to other DDE aware Windows® applications.
- **Historical/Block Database** - Collect and store historical data at configurable collection rates or triggered by events for analysis, reports and trending.
- **@ aGLANCE Connectivity** - allows connection of the Micro-PWC global database with other third party @ aGlance compatible applications in a client/server architecture (planned).
- **Redundant Communications** - Available redundant PCI bus based Ethernet Communications card for secure process data highway communications.

## MINIMUM PLATFORM REQUIREMENTS

**Hardware Requirements:** The following minimum hardware requirements must be met to successfully load and run the Micro-PWC system software. These include:

- An Intel-based, Windows NT-compatible personal computer (PC) with a Pentium processor and minimum speed of 90 MHz; a Pentium-based PC of 120 MHz (or higher) is recommended.
- 48 MB of memory, with the ability to expand the memory capacity to 120 MB; 64 MB (or more) is recommended for optimum performance. If you plan to use optional software packages (such as @ a Glance/ IT Server Interface) at least 15 MB of additional memory is required.
- A 500 MB disk drive, with the ability to expand to 5 GB of disk space. This can be a SCSI or IDE drive, but must be compatible with Windows NT. 1.2 GB of disk space is recommended.
- A CD-ROM Drive. (The Micro-PWC system software is distributed on CD-ROM).
- An IBM AT-compatible 101 key keyboard; all versions of the Micro-PWC system Keyboard are supported.
- A cursor positioning device. This can be a two or three button mouse, trackball or other Windows NT-compatible cursor positioning device.
- A video board and monitor which support 256 colors (8-bit mode) at 1024 x 768 pixel resolution. A video board and monitor which support 65K colors (16-bit mode) are recommended.

- A single Ethernet communication channel (e.g., a 3Com Triple Media Ethernet Adapter board or equivalent).
- A 3.5 inch floppy disk drive for small capacity removable storage.
- A parallel port for printing and hardware key installation.
- A full size ISA bus slot is required for each installed Supervisor card.

**Software Requirements:** The following software versions are required for the Micro-PWC system, Release 1.0:

- Windows NT 4.0 Workstation
- Micro-PWC system Application software, Version 1.0
- 53MC5000 Firmware, Rev. 5
- 53SL6000 Firmware, Rev. 1

**Optional Software Packages:** Optional software packages supported on the Micro-PWC system require the following software versions:

- Microsoft EXCEL, Version 7.0 for Windows 95/Windows NT
- @aGlance/IT, Version 3.0

## NOTES



**ABB Automation Inc.**  
125 East County Line Road  
Warminster, PA 18974 USA  
Tel: 215-674-6000  
Fax: 215-674-7183

**ABB Instrumentation Ltd**  
Howard Road, St. Neots  
Cambs, England, PE19 3EU  
Tel: +44 (0)1480-475-321  
Fax: +44 (0)1480-217-948

**ABB Instrumentation spa**  
Via Sempione 243  
20016 Pero (Milano) Italy  
Tel: +39 (02) 33928 1  
Fax: +39 (02) 33928 240

The Company's policy is one of continuous product improvement and the right is reserved to modify the information contained herein without notice.

© 2000 ABB Automation Inc. Printed in USA (6/00)