

1.0 NOTES:

1.1 IN ORDER TO COMPLY WITH NRTL/C CERTIFICATION FOR CLASS I, DIVISION 2, HAZARDOUS AREA. ALL DEVICES MUST BE INSTALLED ACCORDING TO THIS DRAWING AND THE "NATIONAL ELECTRICAL CODE" NFPA 70 OR THE "CANADIAN ELECTRICAL CODE" C22 PART 1.

1.2 WARNING - EXPLOSION HAZARD - SUBSTITUTION OF COMPONENTS MAY IMPAIR SUITABILITY FOR CLASS I, DIVISION 2.

1.3 WARNING - EXPLOSION HAZARD - DO NOT USE CONNECTOR UNLESS THE AREA IS KNOWN TO BE NON-HAZARDOUS.

1.4 CUSTOMER SUPPLIED EQUIPMENT MUST NOT USE OR GENERATE MORE THAN 250 V WITH RESPECT TO GROUND.

1.5 CUSTOMER SUPPLIED EQUIPMENT MUST BE CERTIFIED FOR USE IN THE CLASSIFIED HAZARDOUS LOCATION IN WHICH IT IS INSTALLED.

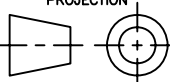
1.6 CUSTOMER SUPPLIED EQUIPMENT MUST BE INSTALLED ACCORDING TO THE MANUFACTURERS INSTALLATION INSTRUCTIONS AND ALL DEVICES MUST BE INSTALLED ACCORDING TO THIS DRAWING AND THE "NATIONAL ELECTRICAL CODE" NFPA 70 OR THE "CANADIAN ELECTRICAL CODE" C22 PART 1.

1.7 WIRING BY FIELD PERSONNEL.

1.8 ALL CONDUIT FITTINGS/CORD CONNECTORS AND ENCLOSURE OPENINGS USED BY CUSTOMER MUST BE RATED AS NEMA/TYP 3R.

REVISIONS					
REV	ACTION	DRAWN	CHECKED	APPROVED	DATE
AA	L20957	KASTNER	KASTNER	ADAMS	08/08/18

END PRODUCT APPROVED FOR USE IN POTENTIALLY EXPLOSIVE ATMOSPHERES.
NO CHANGES ALLOWED WITHOUT APPROVAL OF AUTHORIZED PERSON(S)
IDENTIFIED BY DRAWING 2101982-AI.

001		ITEM NO.	PART NUMBER	DESCRIPTION	REF/ZONE DESIG MATERIAL	UNIT MEAS
ASSEMBLY/QUANTITY						
DO NOT SCALE DRAWING	UNLESS OTHERWISE SPECIFIED DIMENSIONS ARE IN INCHES		PRODUCT LINE TOTALFLOW®	LEVEL 3	ABB TOTALFLOW Products	
THIRD ANGLE PROJECTION 	TOLERANCES ARE: DECIMAL ANGULAR .XX ± -- ± -- .XXX ± --		DESIGN D. ADAMS	DATE 08/05/19	TITLE CERTIFICATION DRAWING	
	BREAK ALL SHARP CORNERS AND EDGES DIMENSIONS APPLY BEFORE FINISH		DRAWN A. KASTNER	DATE 08/05/19	CONTROL DRAWING, WTW - I/O, DIV 2, C/US	
			CHECKED A. KASTNER	DATE 08/05/19	C.D.	
			APPROVED J. BUSHNELL	DATE 08/05/19	SCALE NONE	SIZE B
					DRAWING NO. 2103615	REV AA
						SHEET 1 OF 9

2.0 SPECIFICATION

2.1 MODEL NO. CONFIGURATION FOR WTW-I/O 

MODEL 6453Y -	1	2	3	-	-	-	5	6	8	-	10	11	-	26	-	28	29	-	-	-	-	-	-	-	-	-	-	-	-	-	-	-	-	-	-	50	-	
MODEL 6753Y -	1	2	3	-	-	-	5	6	8	-	10	11	-	26	-	28	29	-	-	-	-	-	-	-	-	-	-	-	-	-	-	-	-	-	-	-	50	-
MODEL 6850Y -	1	2	3	-	-	-	5	6	8	-	10	11	-	26	-	28	29	-	-	-	-	-	-	-	-	-	-	-	-	-	-	-	-	-	-	-	50	-

- 1. CERTIFICATION
- 2. ENCLOSURE
- 3. ELECTRONIC BOARD
- 5. BATTERY OPTION
- 6. CHARGING SOURCE
- 8. MOUNTING KIT (CERTIFICATION NOT APPLICABLE)
- 10. SPECIAL (CERTIFICATION NOT APPLICABLE)
- 11. RTD PROBE OPTION
- 26. PRODUCT IDENTIFIER (CERTIFICATION NOT APPLICABLE)
- 28. I/O MODULE MTG KIT
- 29. I/O MODULE POSITION NO.1
- 50. XFC/XRC FIRMWARE (CERTIFICATION NOT APPLICABLE)
- 100. APPROVED OPTIONAL EQUIPMENT. (NOT PART OF MODEL NO.)

1 CERTIFICATION

Y NRTL/C: CLASS I, DIV 2, GRP C D, T3C

2 ENCL ASSY W/DISPLAY & PCCU CONNECTOR

2.1 6453 ENCLOSURE

2.1.1 2103068-XXX (HOFFMAN) AL ALY

2.2 6753 ENCLOSURE

2.2.1 2102976-XXX (HOFFMAN) AL ALY

2.3 6850 ENCLOSURE

2.3.1 2100462-XXX (HOFFMAN) AL ALY
ENCL WITH 2100463-XXX DOOR

3 ELECTRONIC BOARD OPTIONS

3.1 WTW-I/O PCBA

3.1.1 2102007 WIRELESS I/O CLIENT PCBA

MODEL 6453
ENCLOSURE 2.1.1

ELECTRONIC
BOARD

3.1.1

J1

2000073-002

TO PCCU



MODEL 6753
ENCLOSURE 2.2.1

ELECTRONIC
BOARD

3.1.1

J1

2000073-002

TO PCCU



MODEL 6850
ENCLOSURE 2.3.1

ELECTRONIC
BOARD

3.1.3

J1

2000073-002

TO PCCU



HAZARDOUS AREA
CLASS I, DIV 2, GROUPS C, D

NON-HAZARDOUS
AREA

5 BATTERY OPTION

5.1 BATTERIES

- 5.1.1 — WITHOUT BATTERY
- 5.1.2 — 12V, 8.0 AH CYCLONE (2015113-003)
- 5.1.3 — 12V, 26.0 AH GENESIS (2015052-001)
- 5.1.4 — 12V, 45.0 AH DOUGLAS (2012909-002)
- 5.1.5 — 12V, 42.0 AH GENESIS G12V42AH10EP (2015052-004)
- 5.1.6 — 12V, 17.0 AH GENESIS G12V17AH10EP (2015052-003)
- 5.1.7 — 12V, 13.0 AH GENESIS (2015052-002)
- 5.1.8 — 12V, 26.0 AH POWER-SONIC PS12260-(NB,F) (2015052-005)
- 5.1.9 — 12V, 12.0 AH POWER-SONIC PS12120 (2015052-006)
- 5.1.10 — 12V, 18.0 AH POWER-SONIC PS12180 (2015052-007)

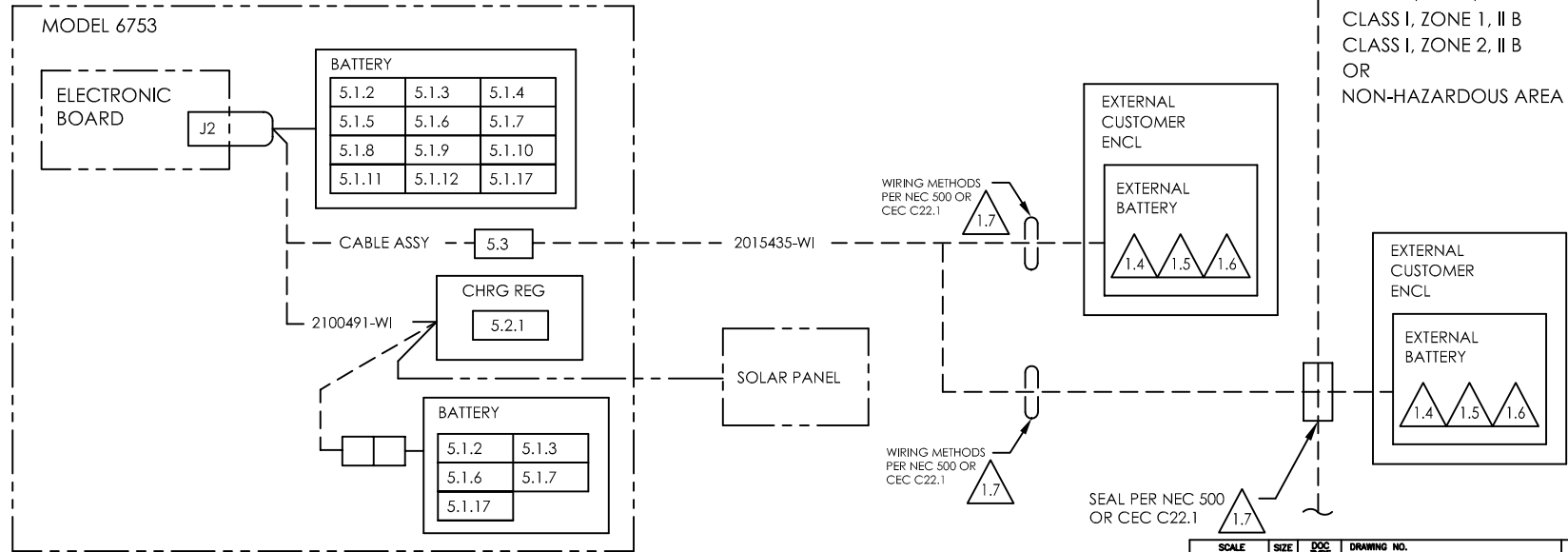
- 5.1.11 — 12V, 40.0 AH POWER-SONIC PS12400 (2015052-008)
- 5.1.12 — 12V, 7.0 AH POWER-SONIC PS12070 (2015052-009)
- 5.1.13 — 12V, 70 AH GENESIS G12V70AH10EP (2015052-010)
- 5.1.14 — 12V, 70 AH GENESIS, 2X
- 5.1.15 — 12V, 26.0 AH GENESIS, 2X
- 5.1.16 — 12V, 42.0 AH GENESIS, 2X
- 5.1.17 — 12V, 26.0 AH, INTERSTATE, DCM0026 (2103487-001)

5.2 CHARGER REGULATOR

- 5.2.1 — SCI ASC #12/8-A CHARGER REGULATOR

5.3 CABLE ASSY, EXTERNAL BATTERY 2015433-001 OR EQUIVALENT

5 BATTERY OPTION



5

BATTERY OPTION

MODEL 6453

ELECTRONIC BOARD

J2

BATTERY

5.1.2	5.1.3	5.1.6
5.1.7	5.1.8	5.1.9
5.1.10	5.1.12	5.1.17

CABLE ASSY

5.3

2100491-WI

CHRG REG

5.2.1

SOLAR PANEL

BATTERY

5.1.2	5.1.3
5.1.6	5.1.7
5.1.17	

HAZARDOUS AREA
CLASS I, DIV 2, GROUPS C, D

EXTERNAL CUSTOMER ENCL

EXTERNAL BATTERY

1.4	1.5	1.6
-----	-----	-----

WIRING METHODS
PER NEC 500 OR
CEC C22.1



WIRING METHODS
PER NEC 500 OR
CEC C22.1



SEAL PER NEC 500
OR CEC C22.1



HAZARDOUS AREA
CLASS I, DIV 1, GROUPS C, D
CLASS I, DIV 2, GROUPS C, D
CLASS I, ZONE 1, II B
CLASS I, ZONE 2, II B
OR
NON-HAZARDOUS AREA

EXTERNAL CUSTOMER ENCL

EXTERNAL BATTERY

1.4	1.5	1.6
-----	-----	-----

MODEL 6850

ELECTRONIC BOARD

J2

BATTERY

5.1.2	5.1.3	5.1.4
5.1.5	5.1.6	5.1.7
5.1.8	5.1.9	5.1.10
5.1.11	5.1.12	5.1.13
5.1.14	5.1.15	5.1.16
5.1.17		

CABLE ASSY

5.3

2100491-WI

CHRG REG

5.2.1

SOLAR PANEL

BATTERY

5.1.2	5.1.3
5.1.6	5.1.7
5.1.17	

HAZARDOUS AREA
CLASS I, DIV 2, GROUPS C, D

EXTERNAL CUSTOMER ENCL

EXTERNAL BATTERY

1.4	1.5	1.6
-----	-----	-----

WIRING METHODS
PER NEC 500 OR
CEC C22.1



WIRING METHODS
PER NEC 500 OR
CEC C22.1



SEAL PER NEC 500
OR CEC C22.1



HAZARDOUS AREA
CLASS I, DIV 1, GROUPS C, D
CLASS I, DIV 2, GROUPS C, D
CLASS I, ZONE 1, II B
CLASS I, ZONE 2, II B
OR
NON-HAZARDOUS AREA

EXTERNAL CUSTOMER ENCL

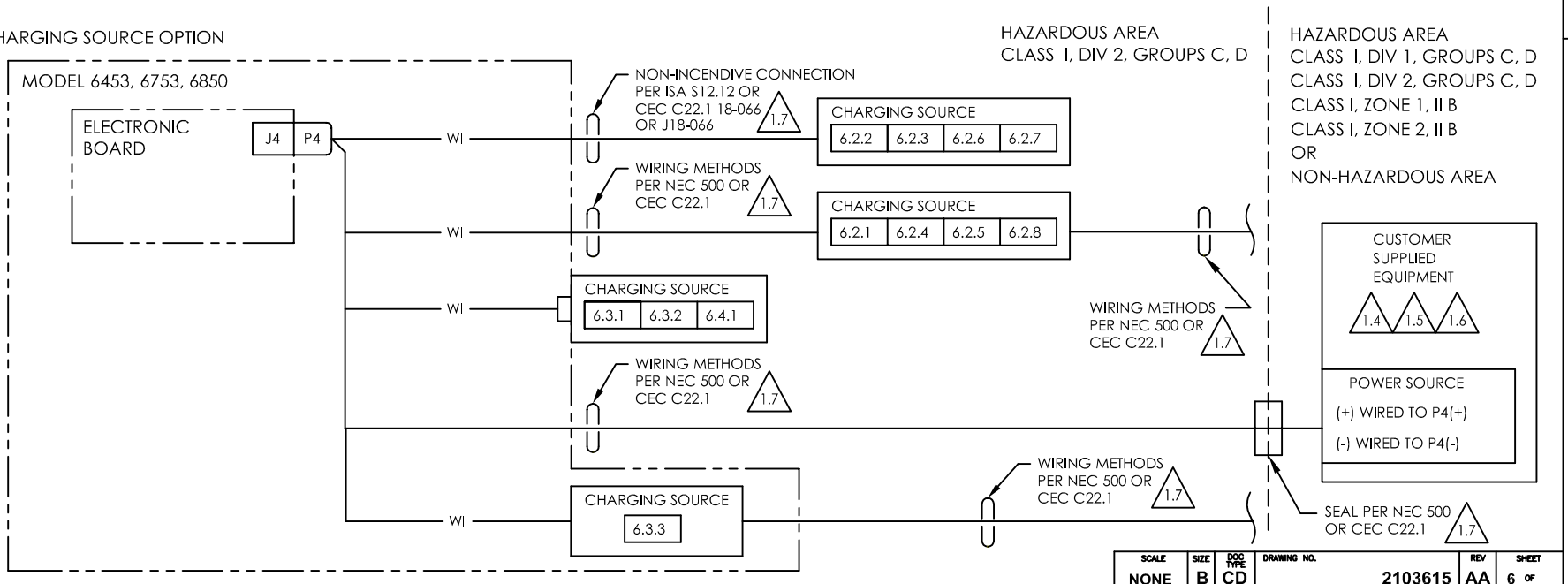
EXTERNAL BATTERY

1.4	1.5	1.6
-----	-----	-----

6 CHARGING SOURCE OPTION

		WIRING INTERCONNECT
6.1	WITHOUT CHARGING SOURCE	
6.2	SOLAR PANELS	
6.2.1	SOLAR PANEL, 12V, 30W (SOLAREX VLX-32) 135 FT MAX CABLE LENGTH -----	2100494-WI
6.2.2	SOLAR PANEL, 12V, 5W (BP SOLAR SX-5M OR SX-305M) 135 FT MAX CABLE LENGTH -----	2100494-WI
6.2.3	SOLAR PANEL, 12V, 10W (BP SOLAR SX-10M OR SX-310M) 135 FT MAX CABLE LENGTH -----	2100494-WI
6.2.4	SOLAR PANEL, 12V, 20W (BP SOLAR SX-20U OR SX-320J) 135 FT MAX CABLE LENGTH -----	2100494-WI
6.2.5	SOLAR PANEL, 12V, 30W (BP SOLAR SX-30U OR SX-330J) 135 FT MAX CABLE LENGTH -----	2100494-WI
6.2.6	SOLAR PANEL, 12V, 5W (KYOCERA KS-5) 135 FT MAX CABLE LENGTH -----	2100494-WI
6.2.7	SOLAR PANEL, 12V, 10W (KYOCERA KS-10) 135 FT MAX CABLE LENGTH -----	2100494-WI
6.2.8	SOLAR PANEL, 12V, 20W (KYOCERA KS-20) 135 FT MAX CABLE LENGTH -----	2100494-WI
6.3	PWR SPLY, AC IN/DC OUT	
6.3.1	AC PWR SPLY, 10W, 115V IN/12V OUT, 2017222-003 PCBA IN RED DOT GAT-4 ENCL -----	2100555-WI
6.3.2	AC PWR SPLY, 10W, 230V IN/12V OUT, 2017222-004 PCBA IN RED DOT GAT-4 ENCL -----	2100555-WI
6.3.3	AC PWR SPLY (PHOENIX QUINT), 100-240V IN, 12 V OUT, 1801966-001 -----	
6.4	PWR SPLY, DC IN/DC OUT	
6.4.1	DC PWR SPLY, 24V IN/12V OUT, 2012541-002 PCBA IN RED DOT GAT-4 ENCL -----	2100585-WI

6 CHARGING SOURCE OPTION



BOARD

