

Types PPW and PPD Indoor or outdoor voltage transformers

Product features

- 600 volt indoor or outdoor
- 10 kV BIL
- 60 Hertz
- Primary volts: 60 - 600
- Secondary volts: 120 (other low voltage outputs available)

Application

Types PPW and PPD are small, light-weight, voltage transformers, specifically designed for light metering burdens through 125 VA at 0.1 PF in applications where size and weight are at a premium.

Core and coils

Pre-molded spools are used for the winding spool and terminal brackets. One leg of the core is fitted through the coil window and securely banded to a support cradle.

Insulation

Thermoplastic rubber insulating material is permanently molded to the core and coil assembly, resulting in a compact unit with excellent mechanical, thermal, and dielectric characteristics.

Terminals

Terminals on both the PPW and PPD are stud type, with sealable terminal covers supplied for high and low voltage with the PPW only. Polarity markings, as well as high and low voltage identification, are molded into the body of the transformer.

Base

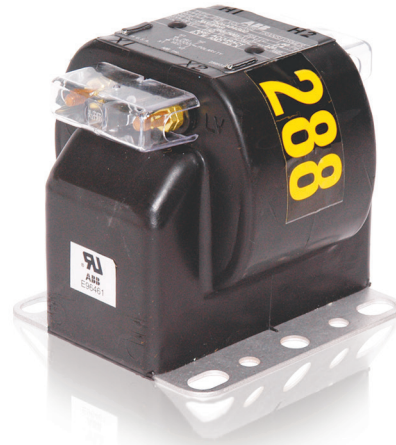
The base is constructed of corrosion-resistant aluminum and secured to the encapsulated base support by four symmetrically located screws.

Test reports

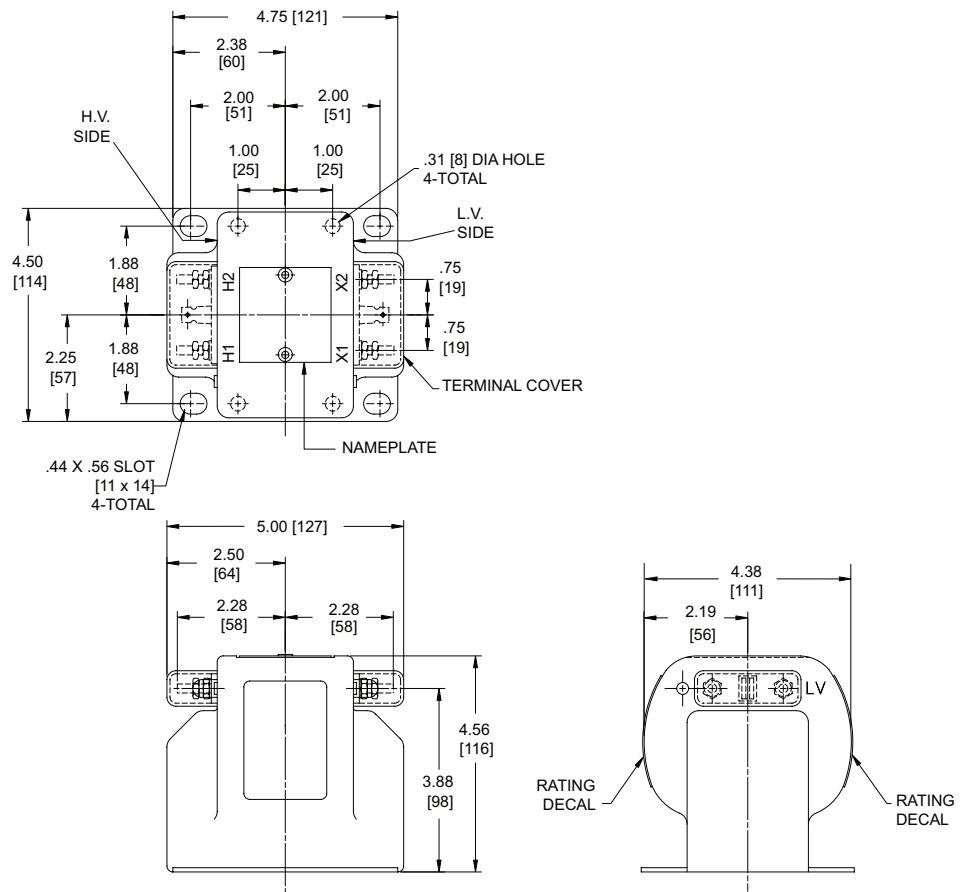
Test reports are stored electronically and can be e-mailed in various formats at the time of shipment.

Standards

These units can be tested to all applicable IEEE, CSA, or IEC standards as requested and is a UL Recognized Component.



Unit dimensions



Types PPW/PPD

Note: metric dimensions displayed in [mm]

Selection guide

Primary volts	Winding ratio	IEEE metering accuracy	Thermal rating		Frequency	Style number
			30°C	55°C		
Type PPW						
115/200Y	1.061:1	0.3W, 0.6X	150 VA	100 VA	60	7526A04G10
120/208Y	1:1	0.6W	150 VA	100 VA	60	7526A04G07
240/416Y	2:1	0.3W, 0.6X	150 VA	100 VA	60	7526A04G01
276/478Y	2.3:1	0.3W, 0.6X	150 VA	100 VA	60	7526A04G09
288/500Y	2.4:1	0.3W, 0.6X	150 VA	100 VA	60	7526A04G02
300/520Y	2.5:1	0.3W, 0.6X	150 VA	100 VA	60	7526A04G03
400/400Y	3.33:1	0.3W, 0.6X	150 VA	100 VA	60	7526A04G06
480/480Y	4:1	0.3W, 0.6X	150 VA	100 VA	60	7526A04G04
480/480Y	2:1	0.3@12.5VA	150 VA	100 VA	60	7526A04G08
500/500Y	4.167:1	0.3W, 0.6X	150 VA	100 VA	60	7526A04G11
600/600Y	5:1	0.3W, 0.6X	150 VA	100 VA	60	7526A04G05
600/600Y	2.5:1	0.3W, 0.6X	150 VA	100 VA	60	7526A04G12
Type PPD						
69.4/120Y	0.58:1	0.6W, 1.2X	150 VA	100 VA	60	7526A05G06
120/208Y	1:1	0.6W, 1.2X	150 VA	100 VA	60	7526A05G07
208/208Y	1.73:1	0.6W, 1.2X	150 VA	100 VA	60	7526A05G08
240/416Y	2:1	0.6W, 1.2X	150 VA	100 VA	60	7526A05G01
288/500Y	2.4:1	0.6W, 1.2X	150 VA	100 VA	60	7526A05G02
300/520Y	2.5:1	0.6W, 1.2X	150 VA	100 VA	60	7526A05G03
380/380Y	3.17:1	0.6W, 1.2X	150 VA	100 VA	50	7526A05G09
480/480Y	4:1	0.6W, 1.2X	150 VA	100 VA	60	7526A05G04
600/600Y	5:1	0.6W, 1.2X	150 VA	100 VA	60	7526A05G05

Note: Terminal covers are provided with the PPW only.

Approximate weight is 9 lbs.

Additional styles available upon request. Contact your ABB sales representative or call +1-252-827-3212 for more information.

For more information please contact:

**ABB Inc.
Medium Voltage Apparatus**

3022 NC 43 North
Pinetops, NC 27864
USA

Phone: +1 252 827 3212

Fax: +1 252 827 4286

www.abb.com/mediumvoltage

Note:

The information contained in this document is for general information purposes only. While ABB strives to keep the information up to date and correct, it makes no representations or warranties of any kind, express or implied, about the completeness, accuracy, reliability, suitability, or availability with respect to the information, products, services, or related graphics contained in the document for any purpose. Any reliance placed on such information is therefore strictly at your own risk. ABB reserves the right to discontinue any product or service at any time.

Copyright 2004 ABB.

All rights reserved.



UL Recognized Component; File No. E96461