

PRODUCT BROCHURE

eFab™ by ABB

Prefabricated electrical rough-in assemblies



eFab typical assemblies



151-SV18-1458

Box with pre-installed 10½" pigtail, raised cover and vertical mounting bracket

- 4" square welded box, 1½" or 2⅝" deep
- Pre-installed 10½" insulated grounding pigtail
- One- or two-device cover, raised ½", ⅝" or ¾"
- 18" (SSF-SV18) vertical mounting bracket
- Save on labor costs by eliminating multiple installation steps

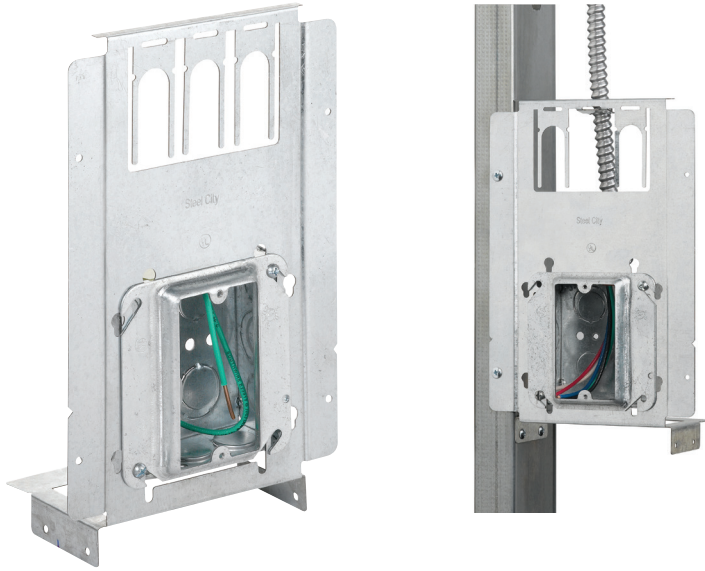
Box with pre-installed 10½" pigtail, raised cover and vertical mounting bracket



Cat. no.	Box type included	Box depth (in.)	Pigtail included (in.)	Box cover included	Raised (in.)	No. of devices	Bracket included	Std. pkg. qty.	UPC no.
151-SV18-13	521511234EW	1½	10½	52-C-13	½	1	SSF-SV18	10	785991-02606
151-SV18-1458	521511234EW	1½	10½	52-C-14-5/8	⅝	1	SSF-SV18	10	785991-02607
151-SV18-14	521511234EW	1½	10½	52-C-14	¾	1	SSF-SV18	10	785991-02758
151-SV18-17	521511234EW	1½	10½	52-C-17-25	½	2	SSF-SV18	10	785991-02760
151-SV18-1858	521511234EW	1½	10½	52-C-18-5/8-25	⅝	2	SSF-SV18	10	785991-02762
151-SV18-18	521511234EW	1½	10½	52-C-18	¾	2	SSF-SV18	10	785991-02609
171-SV18-13	521711234E	2⅝	10½	52-C-13	½	1	SSF-SV18	10	785991-02593
171-SV18-1458	521711234E	2⅝	10½	52-C-14-5/8	⅝	1	SSF-SV18	10	785991-02595
171-SV18-14	521711234E	2⅝	10½	52-C-14	¾	1	SSF-SV18	10	785991-02594
171-SV18-17	521711234E	2⅝	10½	52-C-17-25	½	2	SSF-SV18	10	785991-02776
171-SV18-1858	521711234E	2⅝	10½	52-C-18-5/8-25	⅝	2	SSF-SV18	10	785991-02780
171-SV18-18	521711234E	2⅝	10½	52-C-18	¾	2	SSF-SV18	10	785991-02778

eFab typical assemblies

Box-to-stud mounting bracket with far-side and cable support



SSF-SH2346-CS

Box-to-stud mounting bracket with far-side and cable support

- Built-in cable support secures cable 6" above the box, satisfying NEC code requirements
- Key-hole box mounting slots maintain box position if mud ring needs to be removed
- Pre-installed 10½" insulated grounding pigtail
- One- or two-device cover, raised ½", ⅝" or ¾"
- Save on labor costs by eliminating multiple installation steps

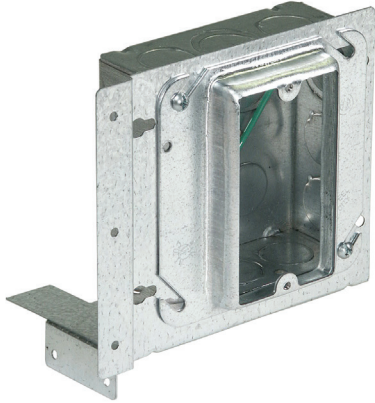
Box-to-stud mounting bracket with far-side and cable support



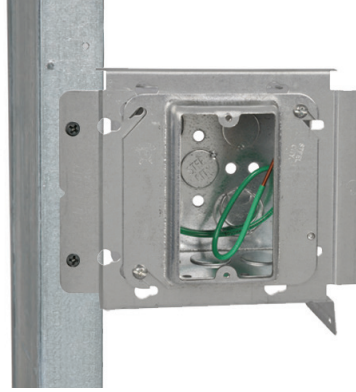
Cat. no.	Box type included	Box depth (in.)	Pigtail included (in.)	Box cover included	Box cover Raised (in.)	No. of devices	Bracket included	Std. pkg. qty.	UPC no.
151-SH2346-13-CS	521511234EW	1½	10½	52-C-13	½	1	SSF-SH2346-CS	10	785991-07178
151-SH2346-1458-CS	521511234EW	1½	10½	52-C-14-5/8	⅝	1	SSF-SH2346-CS	10	785991-07179
151-SH2346-14-CS	521511234EW	1½	10½	52-C-14	¾	1	SSF-SH2346-CS	10	785991-07180
151-SH2346-17-CS	521511234EW	1½	10½	52-C-17-25	½	2	SSF-SH2346-CS	10	785991-07181
151-SH2346-1858-CS	521511234EW	1½	10½	52-C-18-5/8-25	⅝	2	SSF-SH2346-CS	10	785991-07182
151-SH2346-18-CS	521511234EW	1½	10½	52-C-18	¾	2	SSF-SH2346-CS	10	785991-07183
171-SH2346-13-CS	521711234E	2⅞	10½	52-C-13	½	1	SSF-SH2346-CS	10	785991-07184
171-SH2346-1458-CS	521711234E	2⅞	10½	52-C-14-5/8	⅝	1	SSF-SH2346-CS	10	785991-07186
171-SH2346-14-CS	521711234E	2⅞	10½	52-C-14	¾	1	SSF-SH2346-CS	10	785991-07187
171-SH2346-17-CS	521711234E	2⅞	10½	52-C-17-25	½	2	SSF-SH2346-CS	10	785991-07188
171-SH2346-1858-CS	521711234E	2⅞	10½	52-C-18-5/8-25	⅝	2	SSF-SH2346-CS	10	785991-07189
171-SH2346-18-CS	521711234E	2⅞	10½	52-C-18	¾	2	SSF-SH2346-CS	10	785991-07191
171-SH2346-ADJ-CS	521711234E	2⅞	10½	52CADJ	½-1½	1	SSF-SH2346-CS	10	785991-10815
171-SH2346-ADJ2-CS	521711234E	2⅞	10½	52CADJ2	½-1½	2	SSF-SH2346-CS	10	785991-10816

eFab typical assemblies

Box with pre-installed 10½" pigtail, raised cover and box-to-stud bracket



151-SH2346-13



171-SH2346-1458

Box with pre-installed 10½" pigtail, raised cover and box-to-stud bracket

- 4" square welded box, 1½" or 2⅝" deep
- Pre-installed 10½" insulated grounding pigtail
- One- or two-device cover, raised ½", ⅝" or ¾"
- SSF-SH2346 box-to-stud mounting bracket
- Save on labor costs by eliminating multiple installation steps

Box with pre-installed 10½" pigtail, raised cover and box-to-stud bracket

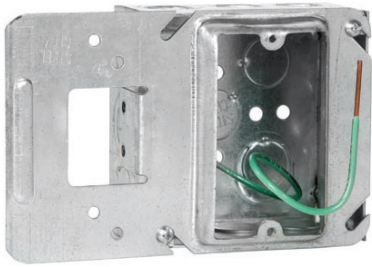


Cat. no.	Box type included	Box depth (in.)	Pigtail included (in.)	Box cover included	Raised (in.)	No. of devices	Bracket included	Std. pkg. qty.	UPC no.
151-SH2346-13*	521511234EW	1½	10½	52-C-13	½	1	SSF-SH2346	10	785991-02611
151-SH2346-1458 *	521511234EW	1½	10½	52-C-14-5/8	⅝	1	SSF-SH2346	10	785991-02612
151-SH2346-14 *	521511234EW	1½	10½	52-C-14	¾	1	SSF-SH2346	10	785991-02746
151-SH2346-17 *	521511234EW	1½	10½	52-C-17-25	½	2	SSF-SH2346	10	785991-02748
151-SH2346-1858 *	521511234EW	1½	10½	52-C-18-5/8-25	⅝	2	SSF-SH2346	10	785991-02810
151-SH2346-18 *	521511234EW	1½	10½	52-C-18	¾	2	SSF-SH2346	10	785991-02614
171-SH2346-13	521711234E	2⅝	10½	52-C-13	½	1	SSF-SH2346	10	785991-02597
171-SH2346-1458	521711234E	2⅝	10½	52-C-14-5/8	⅝	1	SSF-SH2346	10	785991-02599
171-SH2346-14	521711234E	2⅝	10½	52-C-14	¾	1	SSF-SH2346	10	785991-02598
171-SH2346-17	521711234E	2⅝	10½	52-C-17-25	½	2	SSF-SH2346	10	785991-02764
171-SH2346-1858	521711234E	2⅝	10½	52-C-18-5/8-25	⅝	2	SSF-SH2346	10	785991-02812
171-SH2346-18	521711234E	2⅝	10½	52-C-18	¾	2	SSF-SH2346	10	785991-02766
171-SH2346-ADJ	521711234E	2⅝	10½	52CADJ	½-1½	1	SSF-SH2346	10	785991-10817
171-SH2346-ADJ2	521711234E	2⅝	10½	52CADJ2	½-1½	2	SSF-SH2346	10	785991-10818

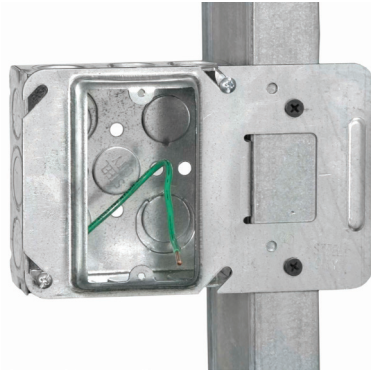
* ¾" KO not usable in shallow box.

eFab typical assemblies

Box with pre-installed 10½" pigtail and box support cover



52171-CM14-5/8



52171-CM14-5/8 mounted to stud

Box with pre-installed 10½" pigtail and box support cover

- 4" square welded box, 1½" or 2⅞" deep
- Pre-installed 10½" insulated grounding pigtail
- Box support cover combines box-to-stud mounting bracket with device cover
- One- or two-device box support cover, raised ½", ⅝" or ¾"
- Save on labor costs by eliminating multiple installation steps

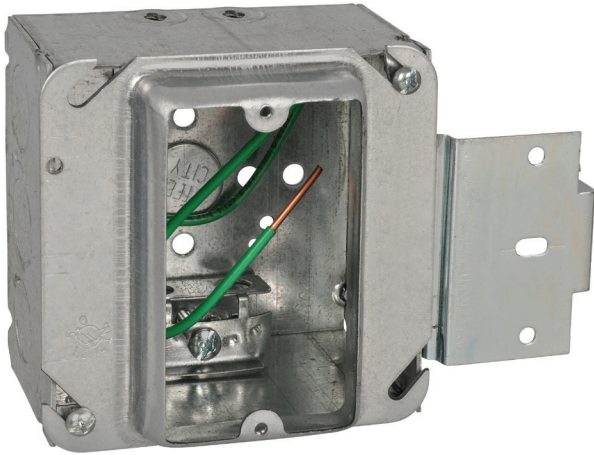
Box with pre-installed 10½" pigtail and box support cover



Cat. no.	Box type included	Box depth (in.)	Pigtail included (in.)	Box cover included	Raised (in.)	No. of devices	Std. pkg. qty.	UPC no.
52151-CM13	521511234EW	1½	10½	52CM13	½	1	25	785991-02712
52151-CM14-5/8	521511234EW	1½	10½	52CM14-5/8	⅝	1	25	785991-02714
52151-CM14	521511234EW	1½	10½	52CM14	¾	1	25	785991-02716
52151-CMD17	521511234EW	1½	10½	52CMD17	½	2	25	785991-02718
52151-CMD18-5/8	521511234EW	1½	10½	52CMD18-5/8	⅝	2	25	785991-02720
52151-CMD18	521511234EW	1½	10½	52CMD18	¾	2	25	785991-02722
52171-CM13	521711234E	2⅞	10½	52CM13	½	1	25	785991-02700
52171-CM14-5/8	521711234E	2⅞	10½	52CM14-5/8	⅝	1	25	785991-02702
52171-CM14	521711234E	2⅞	10½	52CM14	¾	1	25	785991-02704
52171-CMD17	521711234E	2⅞	10½	52CMD17	½	2	25	785991-02706
52171-CMD18-5/8	521711234E	2⅞	10½	52CMD18-5/8	⅝	2	25	785991-02708
52171-CMD18	521711234E	2⅞	10½	52CMD18	¾	2	25	785991-02710

eFab typical assemblies

MS series pre-assemblies



171-MSX-14

MS series pre-assemblies

- 4" square and 4¹/₁₆" square boxes
- 1¹/₂" deep or 2¹/₈" deep
- Pre-installed 10¹/₂" insulated grounding pigtail
- Available with conduit KO's or clamps for flexible/armored/MC cable
- Save on labor costs by eliminating multiple installation steps

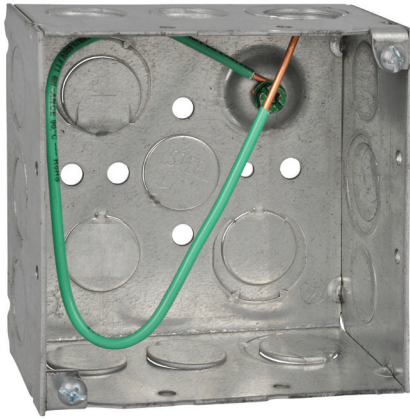
MS series pre-assemblies



Cat. no.	Box type included	Box depth (in.)	Pigtail included (in.)	Box cover included	Raised (in.)	No. of devices	Std. pkg. qty.
151-MS-13	52151-MS-1/2 3/4	1 ¹ / ₂	10 ¹ / ₂	52-C-13	1/2	1	25
151-MS-14	52151-MS-1/2 3/4	1 ¹ / ₂	10 ¹ / ₂	52-C-14	3/4	1	25
151-MS-1458	52151-MS-1/2 3/4	1 ¹ / ₂	10 ¹ / ₂	52-C-14-5/8	5/8	1	25
171MS13	52171-MS-1/2 3/4	2 ¹ / ₈	10 ¹ / ₂	52-C-13	1/2	1	25
171-MS-14	52171-MS-1/2 3/4	2 ¹ / ₈	10 ¹ / ₂	52-C-14	3/4	1	25
171-MS-1458	52171-MS-1/2 3/4	2 ¹ / ₈	10 ¹ / ₂	52-C-14-5/8	5/8	1	25
171MS18	52171-MS-1/2 3/4	2 ¹ / ₈	10 ¹ / ₂	52-C-18	3/4	2	25
171-MS-18 5/8	52171-MS-1/2 3/4	2 ¹ / ₈	10 ¹ / ₂	52-C-18-5/8-25	5/8	2	25
171MSX13	52171-MSX	2 ¹ / ₈	10 ¹ / ₂	52-C-13	1/2	1	25
171-MSX-14	52171-MSX	2 ¹ / ₈	10 ¹ / ₂	52-C-14	3/4	1	25
171-MSX-1458	52171-MSX	2 ¹ / ₈	10 ¹ / ₂	52-C-14-5/8	5/8	1	25
171MSX18	52171-MSX	2 ¹ / ₈	10 ¹ / ₂	52-C-18	3/4	2	25
171-MSX-18 5/8	52171-MSX	2 ¹ / ₈	10 ¹ / ₂	52-C-18-5/8-25	5/8	2	25
72171MS14	72171-MS-1/2 3/4	2 ¹ / ₈	10 ¹ / ₂	72-C-14	3/4	1	25
72171-MS-1458	72171-MS-1/2 3/4	2 ¹ / ₈	10 ¹ / ₂	72-C-14-5/8	5/8	1	25
72171MS18	72171-MS-1/2 3/4	2 ¹ / ₈	10 ¹ / ₂	72-C-18	3/4	2	25
72171-MS-18 5/8	72171-MS-1/2 3/4	2 ¹ / ₈	10 ¹ / ₂	72-C-18-5/8	5/8	2	25
72171MSX14	72171-MS-1/2 3/4	2 ¹ / ₈	10 ¹ / ₂	72-C-14	3/4	1	25
72171-MSX-1458	72171-MSX	2 ¹ / ₈	10 ¹ / ₂	72-C-14-5/8	5/8	1	25
72171MSX18	72171-MS-1/2 3/4	2 ¹ / ₈	10 ¹ / ₂	72-C-18	3/4	2	25
72171-MSX-1858	72171-MS-1/2 3/4	2 ¹ / ₈	10 ¹ / ₂	72-C-18-5/8	5/8	2	25

eFab typical assemblies

Box with pre-installed 10½" pigtail



521711234EP

Box with pre-installed 10½" pigtail

- Popular 4" square boxes and switch boxes
- Pre-installed 10½" insulated grounding pigtail
- Save on labor costs by eliminating multiple installation steps

Box with pre-installed 10½" pigtail



Cat. no.	Box type included	Knockouts	Pre-installed pigtail (in.)	Std. pkg. qty.	UPC no.
521511234EWP	52151234EW 4"-sq. x 1½"D welded box	½" & ¾" Eccentric	10½"	50	785991-02588
521511234P	521511234 4"-sq. x 1½"D drawn box	½" & ¾" Eccentric	10½"	50	785991-02586
521711234EP	521711234E 4"-sq. x 2½"D welded box	½" & ¾" Eccentric	10½"	50	785991-02587
52171CV1234EP	4"-sq. x 2½"D welded box with side bracket	½" & ¾" Eccentric	10½"	25	785991-03620
52171MSXP	4"-sq. x 2½"D welded box	½" & ¾" Eccentric	10½"	25	785991-04380
52171XP	4"-sq. x 2½"D welded box	½" & ¾" Eccentric	10½"	25	785991-04549
721711234EP	4½"-sq. x 2½"D welded box	½" & ¾" Eccentric	10½"	20	785991-03367
521511234GBP	4"-sq. x 1½"D drawn box	½" & ¾"	10½"	50	785991-02583
52151CV1234EP	4"-sq. x 1½"D welded box with side bracket	½" & ¾" Eccentric	10½"	25	785991-03619
5217134P	4"-sq. x 2½"D welded box	¾"	10½"	50	785991-03535
52151XP	52151X 4"-sq. x 1½"D welded box	½" & ¾" Eccentric	10½"	50	785991-02724
52151CVNP	52151CVN 4"-sq. x 1½"D welded box	½" & ¾" Eccentric	10½"	25	785991-02728
LXWOWP	LXWOW-25 3"H x 2"W x 2½"D gangable switch box	½"	10½"	25	785991-02959
LXVP	LXV-25 3"H x 2"W x 2½"D gangable switch box	½"	10½"	25	785991-02692
CXWOWP	CXWOW 3"H x 2"W x 3½"D gangable switch box	½" & ¾"	10½"	25	785991-02694
CXWVP	CXWV 3"H x 2"W x 3½"D gangable switch box	½" & ¾"	10½"	25	785991-02696
CXP	CX 3"H x 2"W x 3½"D gangable switch box	½" & ¾"	10½"	25	785991-02698



ABB Installation Products Inc.

Electrification business

860 Ridge Lake Blvd.

Memphis, TN 38120

Customer Service: 800-816-7809

Technical Support: 888-862-3289

tnb.abb.com

Custom assemblies available upon request.

Please contact your local ABB Sales

Representative with your inquiry.