



BASE INFORMATION

ETS-App Update Copy Convert

Your shortcut to simple configuration



ABB ETS-App Update Copy Convert

Introduction



Whether small, medium or large, each KNX project is unique but when configuring the devices, there are always recurring tasks in all of them.

To support our KNX system integrators save time and reduce effort during configuration and maintenance of ABB / BJE KNX products in ETS projects, we created the ETS-App Update Copy convert.

ABB ETS-App Update Copy Convert

Introduction

The ETS-APP Update Copy Convert (UCC) is a **free-of-charge** tool that provides useful functions for the ETS application and device configuration (parameters and group addresses) in an ETS project.

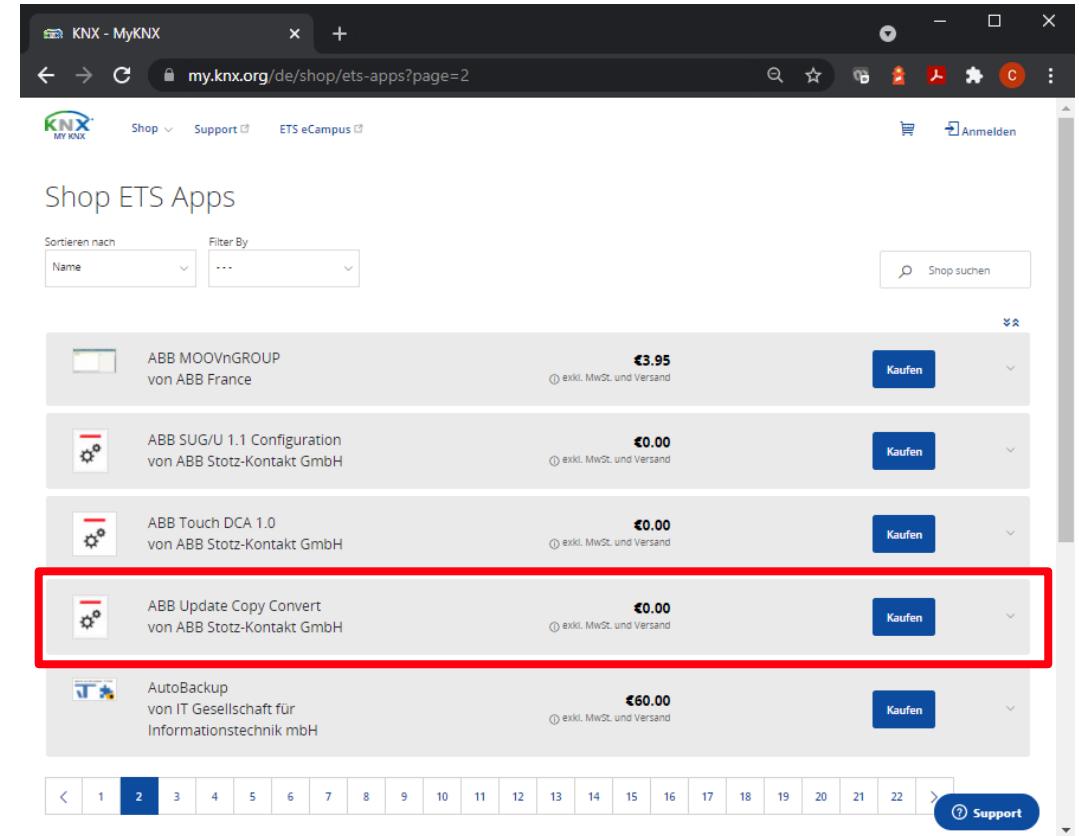
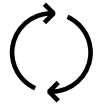


ABB ETS-App Update Copy Convert

Main functions



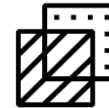
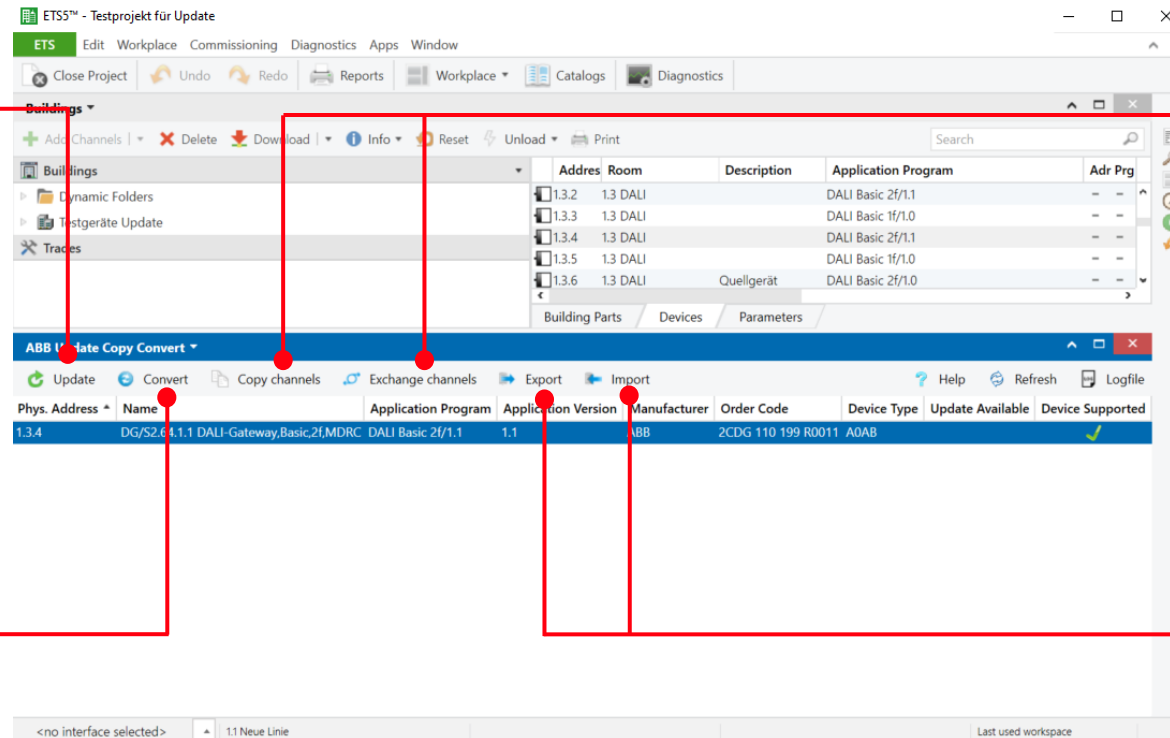
Update

Upgrade or downgrade device(s) application(s)



Convert

Transfer a configuration from a source device to a destination device



Copy / Exchange

Copy and/or exchange channels within a device



Export / Import

Export a device configuration and import it on a compatible device

ABB ETS-App Update Copy Convert

Update

Update

Using the 'Update' function, the selected device and the available applications in the ETS project to which the device can be upgraded and/or downgraded are made available.

With the option 'Update all devices with this application version' all devices in the ETS project can be upgraded to the same version with one single click.

After update, a report window with detailed information is presented.

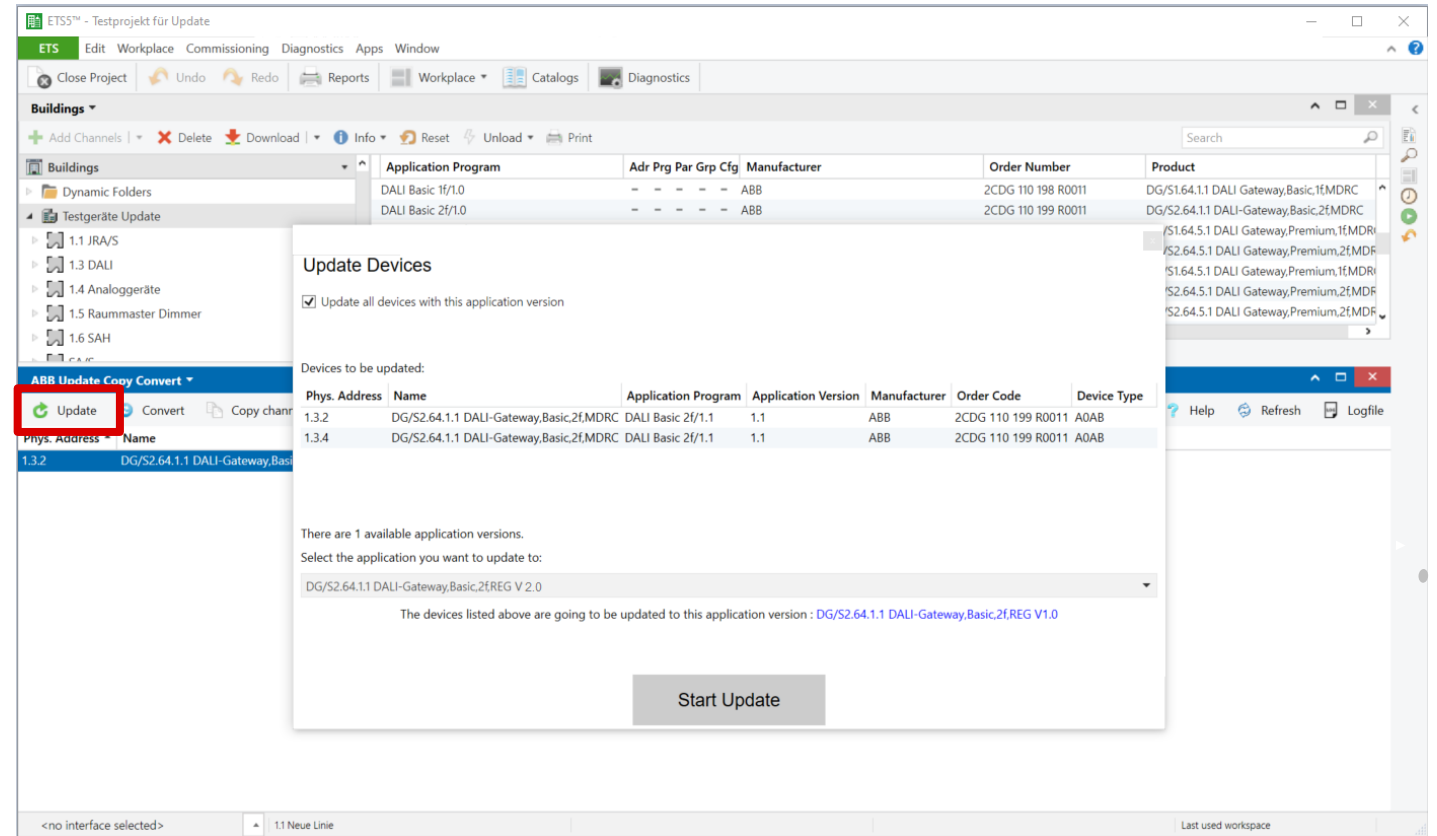


ABB ETS-App Update Copy Convert

Update

Update - Example

System Integrator Peter M. configured 15x ABB DALI Premium DG/S x.64.5.x1 v1.4 in a new hotel in the city center.

The new application v2.0 with color control was released and the new color functionality fits perfect the hotel color concept.

Instead of updating 15 times, all devices can be updated with one single click.

Save up to **90%** update time*



ABB ETS-App Update Copy Convert

Convert

Convert

The configuration of a source device can be transferred to the selected destination device.

Group addresses can be copied or not.

In addition, the channel assignment can be configured, for example, the source channel B can be transferred to the destination channel A.

After conversion, a report window with detailed information is presented.

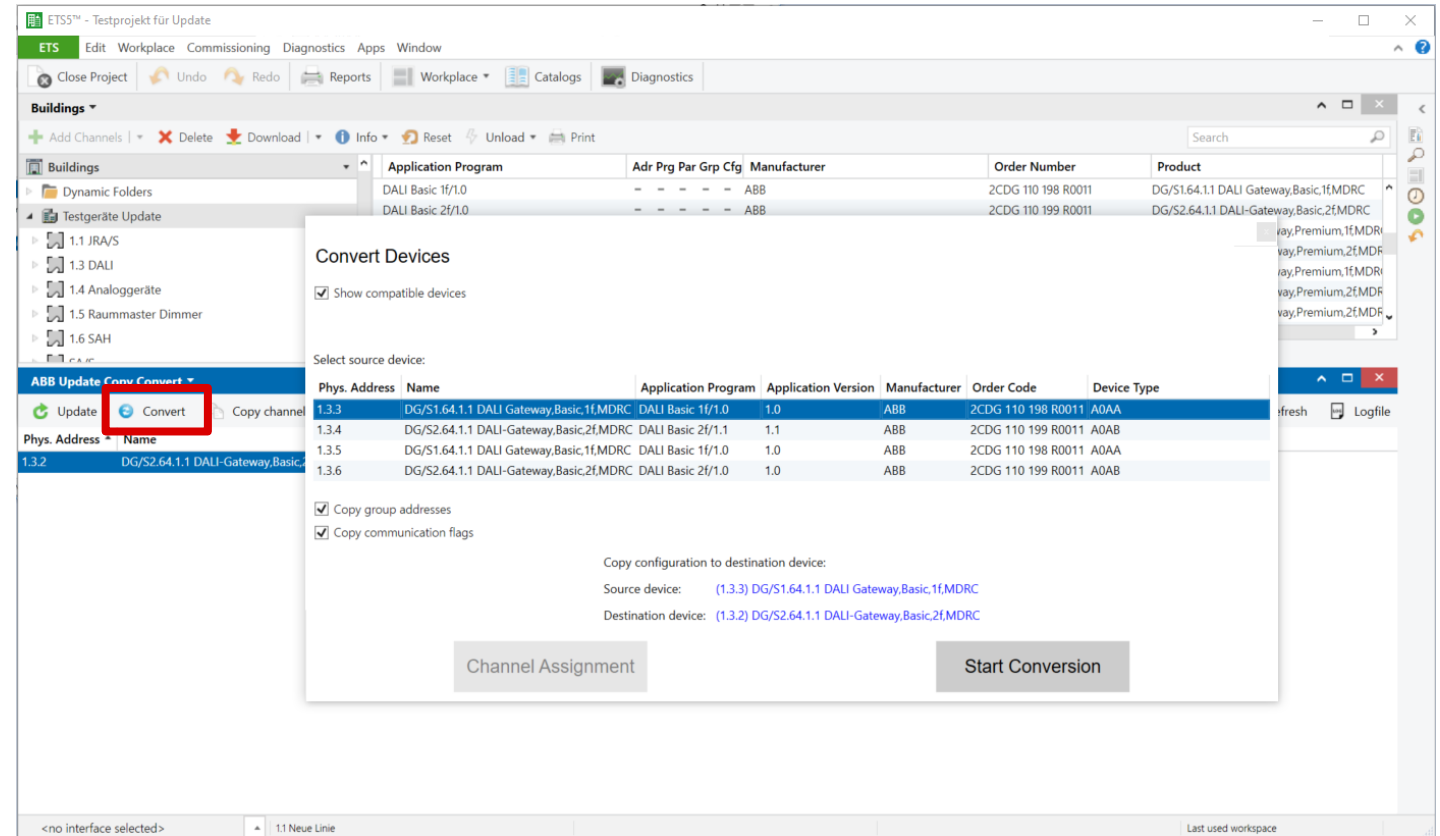


ABB ETS-App Update Copy Convert

Convert

Convert - Example

Systems Integrator Anna S. configured all switch actuators SA/S 12.16.5.2 on floors 1 and 2 of the new Safary Marketing headquarters.

To keep track of energy consumption on the top floor it was decided to install SA/S 12.16.6.2 with Energy Function. Instead of configuring the SA/S with the Energy Function from scratch, the configuration already available from the lower floors can be easily transferred via UCC and only the additional parameters need to be manually configured.

Save up to **80%** configuration time*



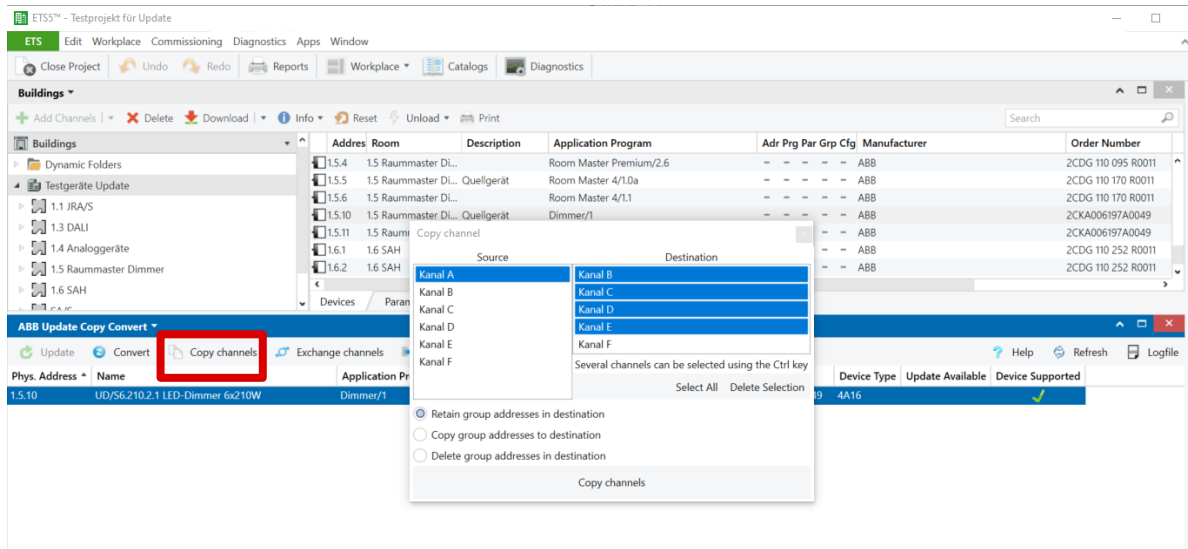
ABB ETS-App Update Copy Convert

Copy and Exchange Channels

Copy Channels

It is possible to copy the settings of a source channel to one or more destination channels.

Group addresses can be copied or not.



Exchange Channels

The settings of a source channel and a target channel can be exchange.

Group addresses can be kept, exchanged or deleted.

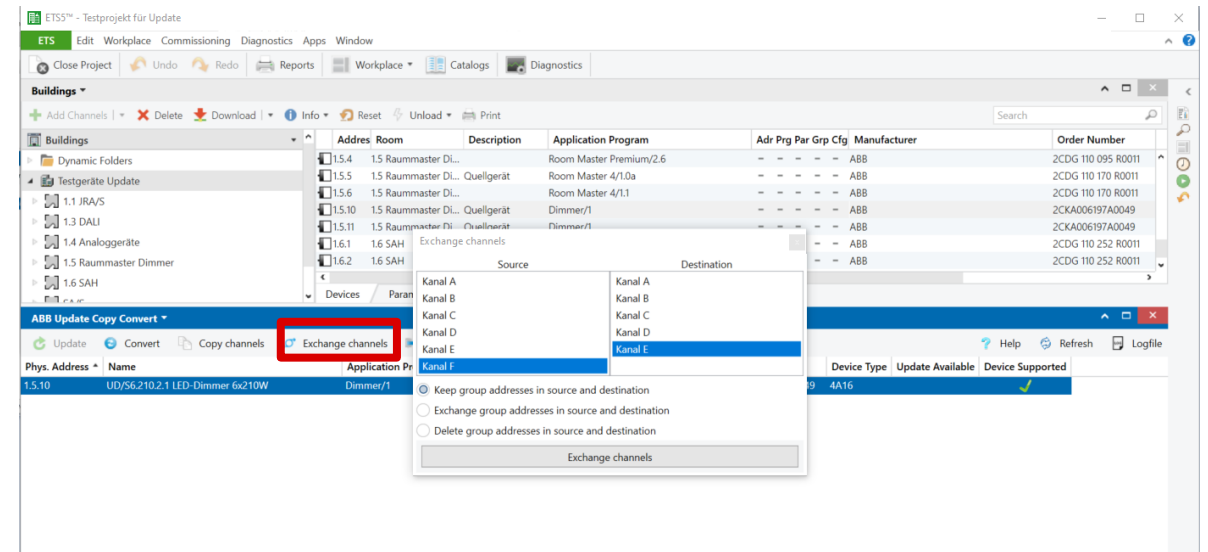


ABB ETS-App Update Copy Convert

Copy and Exchange Channels

Copy and Exchange Channels - Example

System integrator Marco J. configured channel A of the Valve Drive Controller VC/S 4.2.1 in the residential home of one of his best customers.

Since channels B, C and D require the same configuration, he uses the 'Copy channels' function of the ETS-App UCC. Only the set points need to be adjusted on each channel.

Once finished, he realizes that the installer swapped channels C and D. Marco quickly exchange the settings using the 'Exchange channels' function of the ETS-App.

100% more flexibility

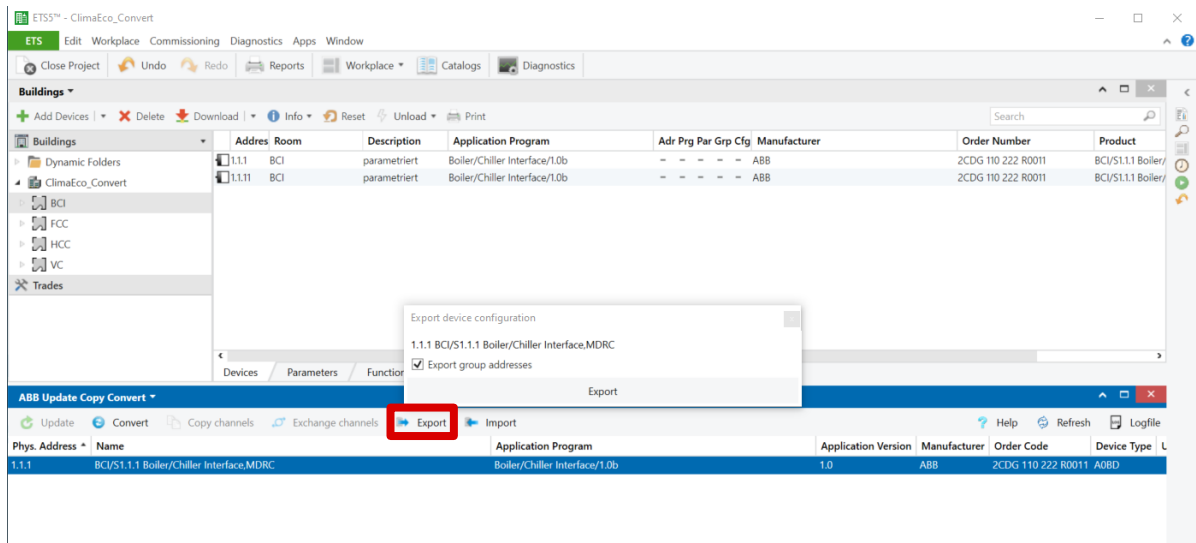


ABB ETS-App Update Copy Convert

Export and Import

Export

The device configuration of the selected device can be exported to an XML file. The group addresses can be exported along with the device configuration.



Import

A previously exported XML file (with all settings) can be imported for the selected compatible device. The group addresses can be imported along with the device configuration.

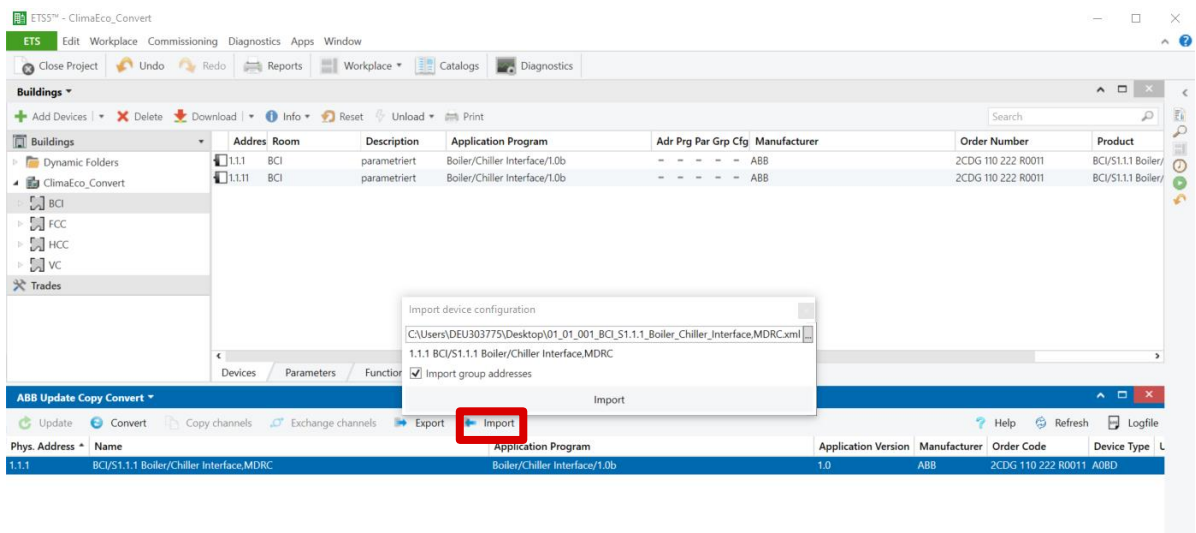


ABB ETS-App Update Copy Convert

Export and Import

Export and Import- Example

In his next project system integrator Marco J. realized the configuration for the Valve Drive Controller VC/S 4.2.1 is the same as the one from a previous project. He exports the configuration from the source project and import it in the new one.

The group addresses were not copied.

Efficient work **24/7**



ABB ETS-App Update Copy Convert

Benefits



Faster configuration



Faster delivery of features



Faster resolution of problems



Configuration reuse



Better use of time



Free of charge



Your shortcut to simple configuration

ABB ETS-App Update Copy Convert

ETS Update Copy Convert

ABB