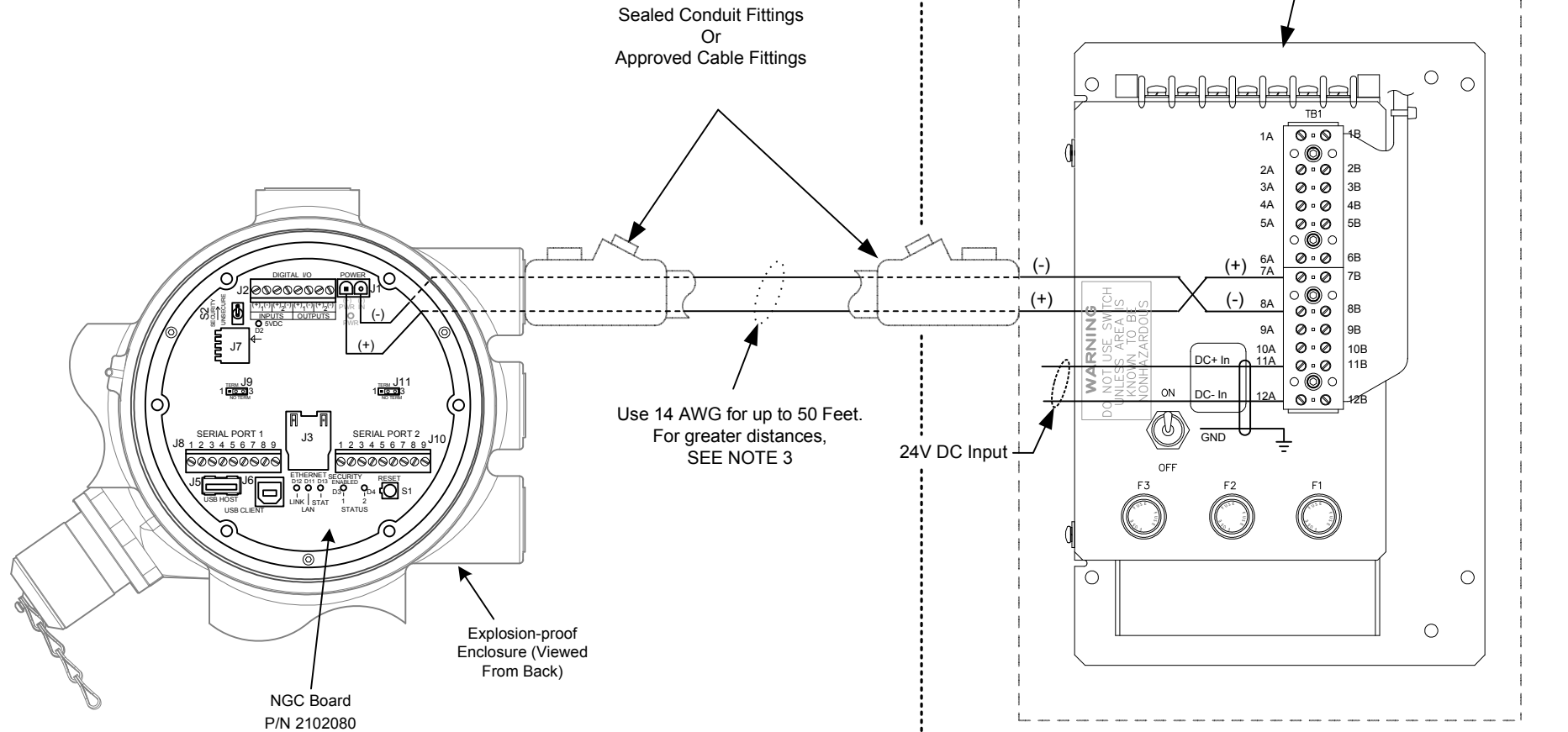


NOTES:

1. Prior to any installation in a classified hazardous location, verify installation methods by the Control Drawing referenced on the product's name tag.
2. To access termination board, remove the Rear End Cap of the unit (a 1/16th Hex Set Screw must be loosened to remove the Cap).



3. Wire size is a function of the distance between the NGC and the DC Power Supply. With the condition of a single heater used by the NGC, use 4 Amps as the maximum current draw to calculate an adequate wire size so that the voltage measured at the NGC's Power I/O terminal is a minimum of 12.5 Volts.

With the optional Feed-Through Heater added to the NGC, use 8.2 Amps as the maximum current draw to calculate an adequate wire size so that the voltage measured at the NGC's Power I/O terminal is a minimum of 12.5 Volts.

Additional power drawn by other equipment connected to the NGC must also be factored into this calculation. Refer to their technical specifications for the requirements of each.

Use 14 AWG for up to 50 Feet.
For greater distances,
SEE NOTE 3

Hazardous Area

Non-Hazardous Area

REF: N/A

ABB	TOTALFLOW	ACTION	DOC TYPE	TITLE	DWG NO.	REV	SHEET
	Products	D19383	UD	NGC8206 TO IPS 24VDC/12VDC POWER SUPPLY	2102408	AB	1 OF 1