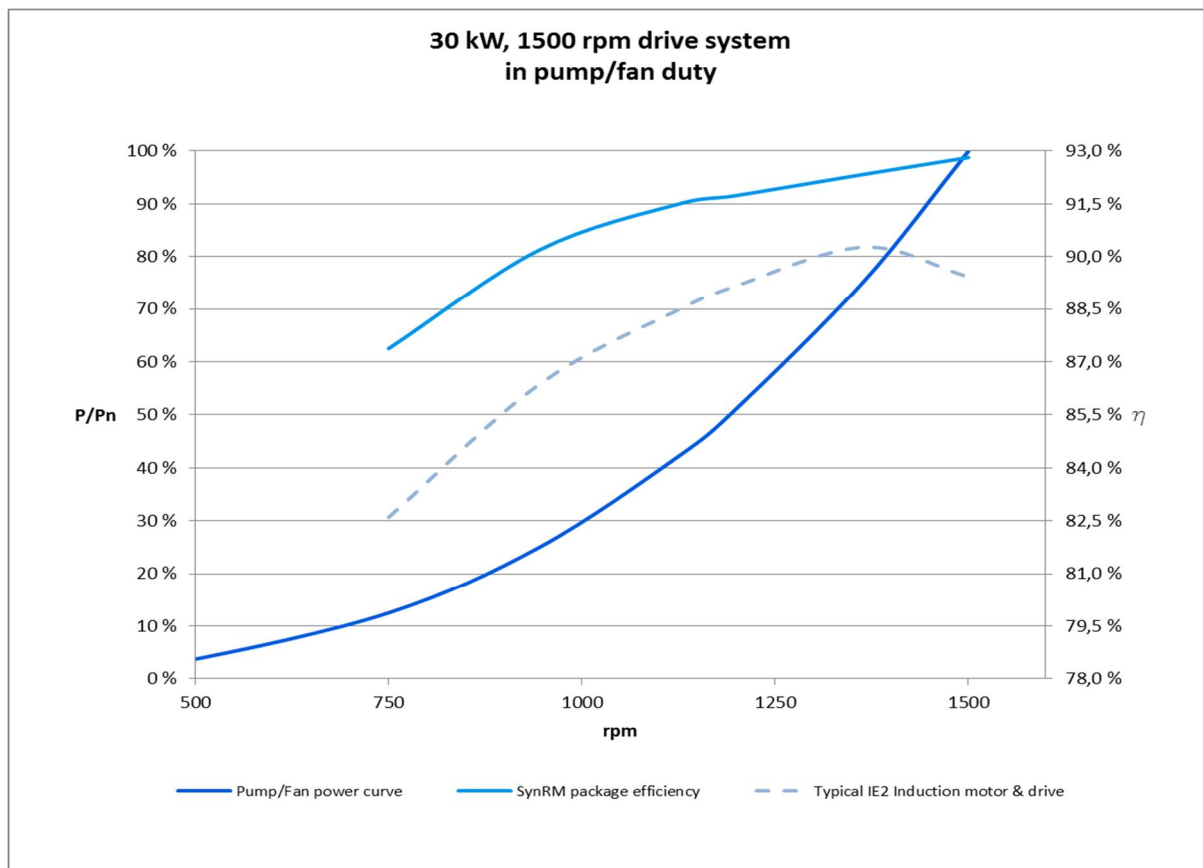


Manufacturer's statement

ACS880-01 and IE4 SynRM motor package efficiency

Drive: ACS880-01-069A-3

Motor: M3BL 200MLA, 3GBL202103-ASC, P_n 30 kW, 1500 rpm



| Speed | Speed rpm | P/P _n | Package efficiency |
|---------|-----------|------------------|--------------------|
| 50 %** | 750 | 13 %** | 87.4 % |
| 63 % | 945 | 25 % | 90.2 % |
| 75 % | 1125 | 42 % | 91.5 % |
| 80 % | 1200 | 51 % | 91.7 % |
| 91 % | 1365 | 75 % | 92.3 % |
| 100 %** | 1500 | 100 %** | 92.8 %* |

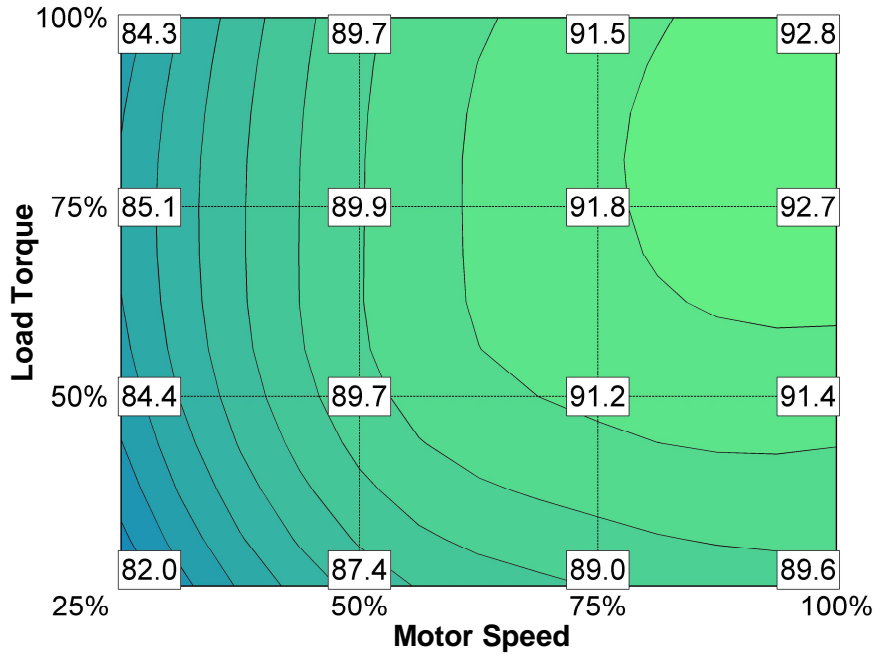
*Estimated tolerance according to IEC 60034-1:

≤150kW: 0.15 x (100 - package efficiency (%)) at the nominal point

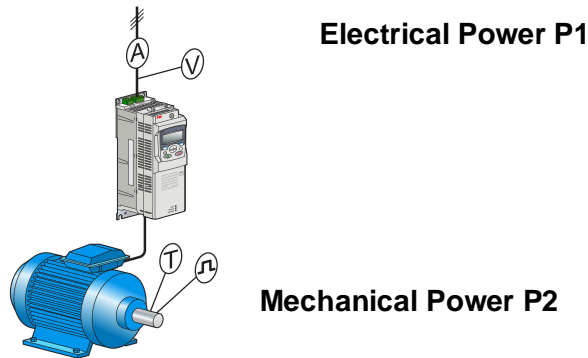
>150kW: 0.10 x (100 - package efficiency (%)) at the nominal point

**Measurement points according to EN 50598-2

Package efficiency [%] for applications with other load characteristics:



Points of measurement



Efficiency $\eta = P2/P1$

Efficiency measurements were made at:

| | | | |
|--|--|----------|--|
| | ABB verification laboratory, Vaasa | X | ABB verification laboratory, Västerås |
| | ABB verification laboratory, Helsinki | | |