

High Voltage Products | Gas-insulated switchgear

## EconiQ™ GIL ELK-3, 420 kV

Eco-efficient design and well-proven GIS technology

### Product information

The EconiQ gas-insulated line (GIL) ELK-3, 420 kV enables significant reduction of SF<sub>6</sub> gas, compared to standard layouts. The modular design of the product allows multiple configurations and substitution of the insulation gas with an eco-efficient alternative.

EconiQ GIL ELK-3, 420 kV showcase Hitachi Energy's commitment to reducing the volume of sulfur hexafluoride (SF<sub>6</sub>) in transmission GIS voltage ratings. This product introduces an important step towards complete 420 kV eco-efficient switchgear by substituting the insulation gas in the product's busducts with SF<sub>6</sub>-free gas mixture.

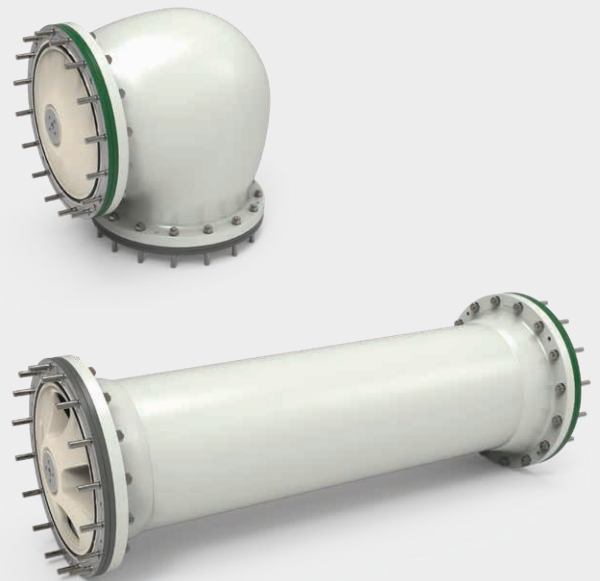
EconiQ GIL ELK-3, 420 kV is the ideal solution for a reliable eco-efficient energy supply up to a rated voltage of 420 kV. Based on a few building blocks with standardized dimensions, same footprint as SF<sub>6</sub> and easy operation, the product allows multiple layouts and incremental substitution of the insulation gas with an eco-efficient solution.

The EconiQ GIL of ELK-3, 420 kV, are operating with an insulation gas mixture of Fluoronitriles (C4-FN), Carbon dioxide (CO<sub>2</sub>) and Oxygen (O<sub>2</sub>). This mixture essentially eliminates the CO<sub>2</sub> equivalent emissions of the insulation medium compared to SF<sub>6</sub> gas.

EconiQ is Hitachi Energy's eco-efficient portfolio for sustainability where products, services and solutions are proven to deliver exceptional environmental performance.

### Key product benefits

- Highly reliable switchgear technology with eco-efficient insulation gas in the GIL



- EconiQ GIL of ELK-3, 420 kV does not contain SF<sub>6</sub>
- Minimal product size allows to fit in existing layouts
- Complete single-phase encapsulation
- Earthquake resistant up to ground acceleration of 1g
- Ideal solutions for hydropower plants, offshore wind farms, and container solutions in combination with complete bays
- Based on the well-proven ELK-3 family and five decades of experience in the GIS technology
- Future proof to environmental regulations
- No risk of accidental leakage of SF<sub>6</sub>

### Ease of gas handling

- A common eco-efficient insulation gas for high-voltage equipment will enable the industry to adopt a standardized eco-efficient gas approach from sub-transmission to ultrahigh voltage
- Standard service concept and auxiliary equipment



## Performance data – EconiQ GIL ELK-3, 420 kV

|  |    |                  |
|--|----|------------------|
| Rated voltage  | kV | 420              |
| Rated short-duration power-frequency withstand voltage | kV | 650              |
| Rated lightning impulse withstand voltage              | kV | 1425             |
| Rated frequency  | Hz | 50 / 60          |
| Rated normal current                                   | A  | 5000             |
| Rated withstand current                                | kA | 63               |
| Rated peak current                                     | kA | 171              |
| Installation   |    | Indoor / Outdoor |

The data are not limiting values. Additional data on request.

**Hitachi Energy**  
 High Voltage Products  
 Gas-insulated switchgear  
[contact-us@hitachienergy.com](mailto:contact-us@hitachienergy.com)



[www.hitachienergy.com](http://www.hitachienergy.com)

We reserve the right to make technical changes or modify the contents of this document without prior notice. With regard to purchase orders, the agreed particulars shall prevail. Hitachi Energy Ltd. does not accept any responsibility whatsoever for potential errors or possible lack of information in this document.

We reserve all rights in this document and in the subject matter and illustrations contained therein. Any reproduction, disclosure to third parties or utilization of its contents – in whole or in parts – is forbidden without prior written consent of Hitachi Energy Ltd.

1HC0198548 E01 / AC21