
 TECHNICAL DATA SHEET

PMA Ex system – BEYR - Y Piece

PMA



IP68, Y Piece for flexible conduits



Applications:

- For indoor and outdoor applications in hazardous areas

Features & Benefits:

- Prevents electrostatic charging
- For indoor and outdoor applications
- High connection strength - to conduit
- Corrosion resistant
- Easy installation
- Very good chemical properties
- For Zone 1, 2, 21 & 22

Ingress protection:

- IP66, IP68

Materials:

- Dissipative polyamide 12

Compatible with:

- PMA Ex-System Conduit

Conforms to:

- IEC EN 60079-0, IEC EN 60079-7, IEC EN 60079-31
- GB/T 3836.1, GB/T 3836.3, GB/T 3836.31

Certificates:

- ATEX: SEV 15 ATEX0121X
- IECEx: IECEx SEV15.0009X
- CCCEX: 2024122313118136

Ex-Markings:

- Ex eb IIC Gb
- Ex tb IIIC Db

Weathering resistance:

- Very good UV resistance and weathering characteristics

Colour:

- Black

Chemical properties:

- Please refer to www.pma.ch for more technical information and informations on chemical resistance

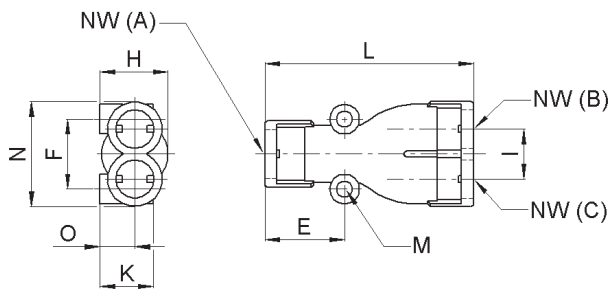
Environmental properties:

- Free from halogens and cadmium
- RoHS and REACH compliant

Product selection:

Part no.	Conduit size			Dimensions in mm (nom.)								Weight	Packing unit
	NW (A)	NW (B)	NW (C)	L	H	M	A	F	I	K	O		
black												kg/100 pcs	pcs/PU
BEYR030202	12	10	10	69.0	24.0	2xM4	27.0	24.0	19	18	12.0	1.9	1
BEYR040303	17	12	12	80.0	30.0	2xM5	34.0	32.0	22	22	15.0	2.8	1
BEYR050404	23	17	17	98.0	38.0	2xM6	38.0	42.0	30	29	19.0	5.1	1
BEYR060505	29	23	23	109.0	45.0	2xM6	37.0	48.0	37	33	23.0	8.0	1
BEYR070606	36	29	29	130.0	54.0	2xM6	50.0	58.0	43	36	27.0	11.6	10
BEYR080707	48	36	36	144.0	68.0	2xM6	50.0	70.0	50	48	34.0	15.7	10

Our customer service dept. or local distribution partner will be pleased to help you concerning product availability and lead time



Mechanical Properties:	Value:	Test parameters:	Test method:
Tensile modulus	1100 N/mm ²		ISO 527
Tensile strength	35 N/mm ²		ISO 527
Impact strength	> 7 J	(85°C)	EN 60079-0
Impact strength (NW10-12)	> 7 J	(-5°C)	EN 60079-0
Impact strength (NW17-48)	> 7 J	(-20°C)	EN 60079-0

Thermal properties:	Value:	Test parameters:	Test method:
For use in hazardous locations:			
Temperature range in combination with PMA XESX conduit sizes 02-03 (NW10-12)	-05 ... +85 °C		EN 60079-0
Temperature range in combination with PMA XESX conduit sizes 04-08 (NW17-48)	-20 ... +85 °C		EN 60079-0
General:	-50 ... +95 °C		

Electrical properties:	Value:	Test parameters:	Test method:
Specific surface resistivity	< 10 ⁷ Ω		ASTM D257

Content of delivery:

- Y piece with conduit locking clips (EVN2)
- Ex-System Conduit gaskets (NEN3)

Assembly instructions:

- Please consider the appropriate assembly instructions on www.pma.ch

ABB Switzerland Ltd,
PMA Cable Protection
Aathalstrasse 90
8610 Uster, Switzerland
Phone: +41 58 585 00 11
pma-info@ch.abb.com
www.pma.ch

Let's write the future.
Together. **abb.com**

We reserve the right to make technical changes or modify the contents of this document without prior notice. With regard to purchase orders, the agreed particulars shall prevail. ABB Installation Products Inc. does not accept any responsibility whatsoever for potential errors or possible lack of information in this document.

We reserve all rights in this document and in the subject matter and illustrations contained therein. Any reproduction, disclosure to third parties or utilization of its contents – in whole or in parts – is forbidden without prior written consent of ABB Inc. Copyright© 2019 ABB Installation Products Inc. All rights reserved

