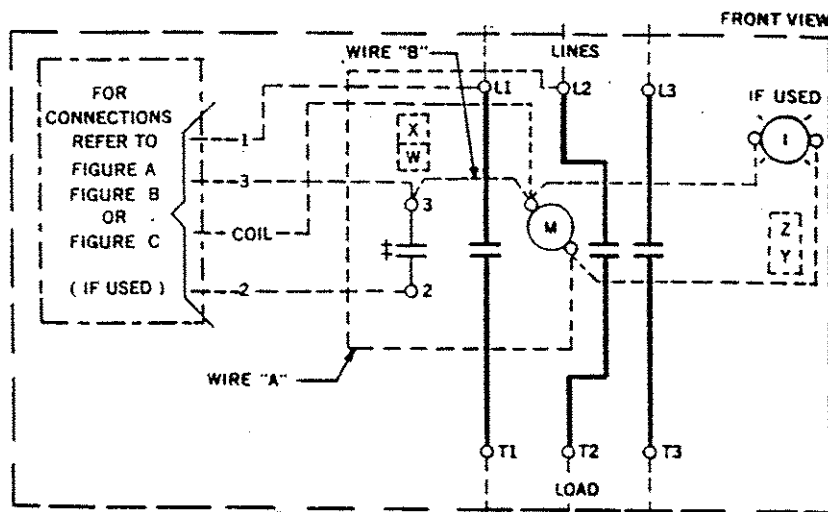
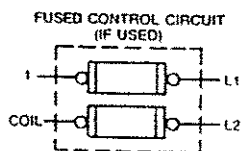
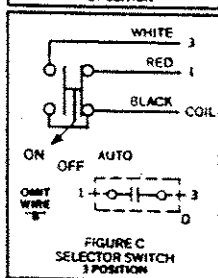
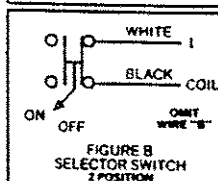
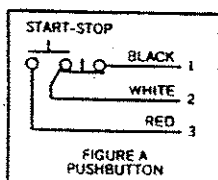


GEJ-6584 Information Label

# CR360L Lighting Contactor

60, 100, 200, 300 Ampere



The following accessory kits may be installed on this device.

	60 Ampere	100 Ampere	200 Ampere	300 Ampere
ON-OFF PB	CR305X220E	CR305X320D	CR305X520C	CR305X520C
OFF-ON Sel Sw	CR305X230D	CR305X330D	CR305X530D	CR305X530D
H-O-A Sel Sw	CR305X230N	CR305X330B	CR305X530B	CR305X530B
Ind Light	CR305X250N	CR305X350B	CR305X550B	CR305X550B
Aux Contact	CR305X200A, B, C, X100D, E	CR305X300A, B, C, X100D, E	CR305X500A, B, C, X100E, E	CR305X500A, B, C, X100D, E
Control Circuit Fuse	CR305X241A, B	CR305X341A, B	CR341X541A, B	CR305X541A, B
<b>Principal Renewal Parts</b>				
3 Movable & 6 Sta. Cont.	546A780G051	55-153677G002	55-154607G051	55-154607G002
Coil (Plus Suffix No.)	15D22G	55-501336G	55-530249G	55-530249G
<b>For CSA-GND KIT</b>				
1/2-IN CONDUIT	55-213403G001	1 1/2-IN CONDUIT	55-213403G005	
3/4-IN CONDUIT	55-213403G002	2-IN CONDUIT	55-213403G006	
1-IN CONDUIT	55-213403G003	2 1/2-IN CONDUIT	55-213403G007	
1 1/4-IN CONDUIT	55-213403G004	3-IN CONDUIT	55-213403G008	

**M-LINE CONTACTOR**

**I-INDICATING LIGHT**

**D-MAINTAINING CONTACT PILOT DEVICE**

Use 75°C, copper conductors only, for field wiring. Torque line and load terminals as shown at right.

Rating	Lb-In
60A	50
100A	150
200A	250
300A	300

FOR SEPARATE CONTROL—Omit wire "A" and connect control source to coil and to 1 on control device.

**NOTE:** Refer to the National Electrical Code. Additional control overcurrent protection may be required.

FOR 1-PHASE OPERATION—Change connection of wire "A" from L2 to L3. Connect lines to L1 and L3 and load to T1 and T3.

**COIL (Order Coil No. plus coil suffix number per table below)**

60 Hz	115-120V	200-208V	230-240V	—	460-480V	575-600V
50 Hz	110V	—	220V	380V	440V	550V
Coil Suffix	002	023	003	064	004	005

**EXTRA AUXILIARY CONTACTS**

Final Suffix Letter Of CR Number	Contact Location. See Diagram			
	W	X	†Y	†Z
A (Or None)				
B				
C				
D				
E				
F				
G				
H				
J				
†Z	No Holding Interlock			

† Not available when Control Circuit Fuse Kit is used.

