

We reserve all rights in this document and in the information contained therein. Reproduction, use or disclosure to third parties without express authority is strictly forbidden. © ABB 19

Pos. Läge	R connects förbinder	H connects förbinder
1	12-13	1-15
2		2-15
3		3-15
4		4-15
5		5-15
6		6-15
7		7-15
8		8-15
9		9-15
10		10-15
11A		11-15
11B	12-14	12-15
11C		1-15
12		2-15
13		3-15
14		4-15
15		5-15
16		6-15
17		7-15
18		8-15
19		9-15
20	10-15	
21	11-15	

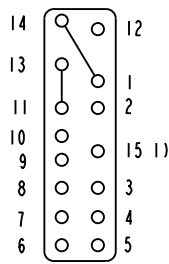
A position with letter is a through position and gives the same voltage as the normal position.

Läge med bokstav är ett genomslagsläge och ger samma spänning som normalläget.

1) Connections between the terminals 15 of the three phases are included in the star-point type.

Förbindningar mellan uttag 15 i de tre faserna ingår i nollpunktsutförandet.

Terminal board Plint



Section A-A
Sektion A-A

On-load tap-changer type UZER., UZFR., 21 tap positions, plus/minus switching.

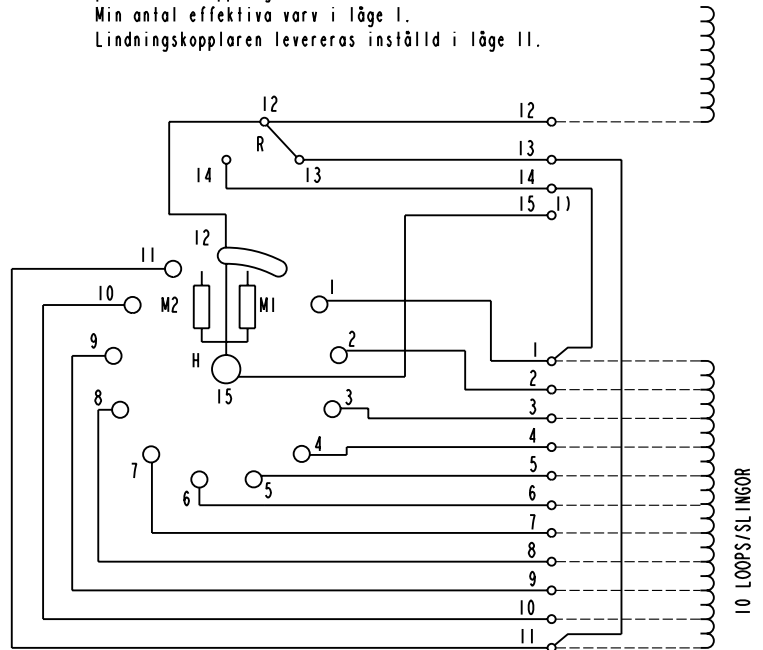
Min effective No. of turns in pos. 1.

The tap-changer is delivered set in pos. 11.

Lindningskopplare typ UZER., UZFR., 21 lägen, plus/minus-koppling.

Min antal effektiva varv i läge 1.

Lindningskopplaren levereras inställd i läge 11.

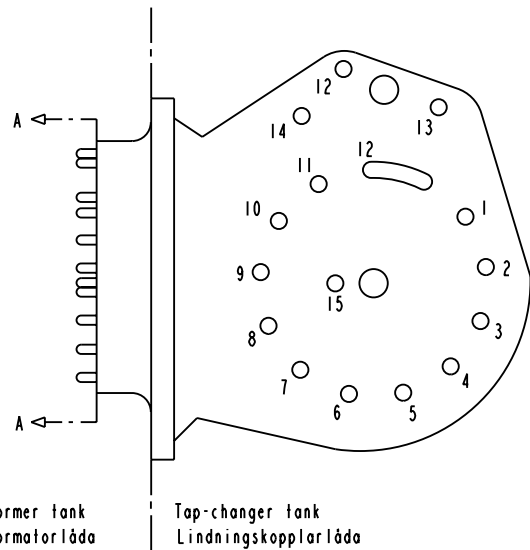


The tap-changer is shown in pos. 11
Lindningskopplaren visad i läge 11

R Change-over selector
Plus/minus-omkopplare

H Main contact
Huvudkontakt

M1, M2 Transition contacts
Motståndskontakter



Transformer tank
Transformatorlåda

Tap-changer tank
Lindningskopplarlåda

Sheet	Cont
Year	Week
Dept	
Rev	Inc
Appd	Year
Week	

Rev	Inc	Appd	Year	Week	
Accepted for qual control R. Yngvesson		Accepted for prod by		Description (English) CONNECTION DIAGRAM	
Design checked by B-O. Stenestam		Drawn by L. Bergman		Description (own language) KOPPLINGSSHEMA	
Drawing checked by M. Hedlund		Issued by Dept COM/TKO		Year Week 97 33	
Lang		Sheet		File name	
-		1		0397-7	
Rev		Inc		Cont	
-		-		-	



Asea Brown Boveri

5492 0397-7