



ReliaGear™ busway plug-in units

Lighter, smaller, easier to modify



ReliaGear busway is a light weight, custom designed modular electrical power distribution system available up to 6000 A, in both feeder and plug-in styles.

Key differentiators

- Smaller size, light weight
- Fewer overall parts (switches, breakers, rotary handles & lugs)
- Elimination of all yokes and handle linkage parts
- Improved weather protection design
- Clear line side cover – allows for better inspections of strap connections
- All mylar labels – higher quality, longer lasting
- Rotary handle with LOTO built-in
- Improved overall look – very clean outside and inside
- Fusible J class plugs – no fuse clips needed
- No more FVK or DE plugs
- No painted or plated parts inside the plug – using G90 steel
- Better access to Neutral and Ground lugs for the customer
- Better access to the fuses for the customer

Target markets

- Heavy industrial facilities
- Factories
- Gas/oil refineries
- Data centers
- Hospitals
- Aviation facilities
- Universities
- Commercial buildings
- High rise office or residential buildings
- Utility/vault service runs

ABB's ReliaGear™ busway plug-in designs, OS (Class J) 30A-200 A, OT (Class H) 30 A-200 A and OT (Class R) 30-100 A Fusible switch plug in units, and Tmax XT circuit breaker plug-in unit 15 A – 250 A, are available for both ReliaGear™ and Spectra™ series busway.

ReliaGear busway combines benefits of the proven Spectra™ series busway, with the sophisticated technology of the Tmax circuit breaker, and fused switches in a plug-in unit.

OS and OT fusible switch plug-in unit combination

Type	Amperes	U/L class fusing	Fuse description	Short circuit ratings in Ampere RMS symmetrical
OS	30-200	J*	current limiting rejection	200,000
	30-200	H/NEC*	one-time	10,000
OT	30-100	R*	current limiting rejectoin	200,000

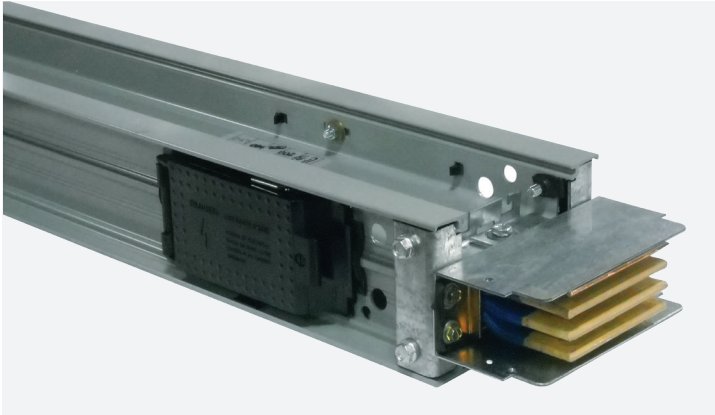
* OS/OT 400 A and 600 A next release December 2021; OT (Class R) 200 A, 400 A and 600 A March 2022 release ; Low Amp plug-in units fusible and circuit breaker type by December 2021 and March 2022 release

Tmax XT circuit breaker busway plug-in units

Construction	Tmax frame	Trip ratings (amps)	Old frame type	Trip* ratings (amps)	XT frame IC ratings		
					240 V	380, 415 & 480 V	600 V
Low tier	-	-	SEDA	15-150	-	-	-
	XT2N	15-125	SEHA	15-150	65	25	18
	XT4N	70-250	SFHA	70-250	65	25	18
Mid-tier	XT2S	15-125	SELA	15-150	100	35	22
	XT4S	70-250	SFLA	70-250	100	35	22
High tier	XT2L	15-125	SEPA	15-150	200	100	35
	XT4L	70-250	SFPA	70-250	200	100	50

* Tmax XT2 and XT4 both are available at 80% and 100% UL rated. Both XT are available with either a Thermo Mag or ekip trip unit

Benefits of ReliaGear™ busway



ReliaGear™ busway provides a sustainable and flexible approach to power distribution.

By using ReliaGear busway in place of cable and conduit, operators realize savings in terms of capital, space, and installation time.



Simplified installation and reduced costs

Designed and built to fit specific layout needs, ReliaGear busway cuts labor time by up to half. ReliaGear busway eliminates the time-consuming tasks of forming conduit and pulling wire.



Flexible, compact design

Ideal for applications where space is limited. Due to its modular design, busway runs can be easily added, disassembled, and relocated with minimal effort.



Safe and reliable

Coupled with integrated safety features, busway provides increased reliability with durable epoxy insulation. ABB exclusive Blue Coat™ epoxy insulation provides the industry's longest insulation life of 50+ years.



Sustainability

When compared to cable and conduit, ReliaGear busway is the sustainable option using significantly less material.



Manufacturing for the future

ABB implemented new production technologies enabling a 30% capacity increase while reducing environmental impact.



Ratings to meet all requirements

Broad portfolio ranges up to 6000 A. Available in a variety of lengths and sizes to maximize space savings.

To learn more about ReliaGear busway, contact a local sales representative or visit

<https://electrification.us.abb.com/products/busway>