

—
PRODUCT SHEET

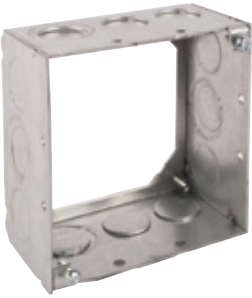
Steel City[®] 4" square open back boxes



Steel City® 4" square open back boxes



01 X11234 shallow open back box



02 X71234 deep open back box



03 Ground clip



04 Blank cover

Typically used as a through-wall box, the open back is ideal for prefab methods. The open back access allows for wiring of a pre-installed device from the rear, never having to drop the device or mud ring from the front of the box. This method saves time and labor on the job site. After making the connections, secure a blank plate to the back of the box to complete the installation.

Steel City offers both shallow and deep open back boxes.

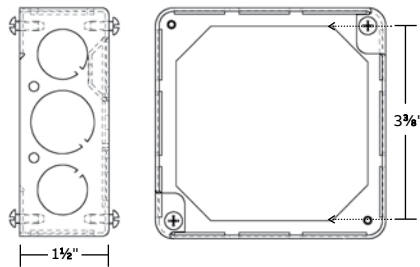
- Mounting screws on both sides of the box accommodate a mud ring on the front and a blank cover on the back
- Ideal for prefab applications — the open back provides fast and easy access to make wiring connections in the field

4" square open back boxes

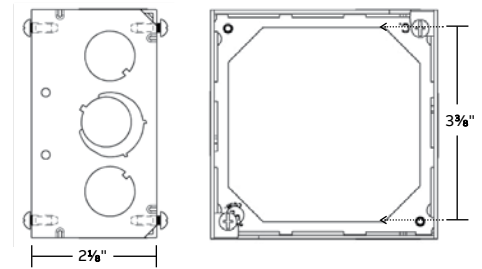


Cat. no.	Depth (in.)	Capacity (cu. in.)	Knockout (in.)		Std. pkg. qty.	UPC no.
			Ea. side conduit	Ea. end conduit		
With conduit KOs						
X11234	1½	21.0	(2)½, (1)¾	(2)½, (1)¾	25	785991-12620
X71234	2½	30.3	(2)½, (1)½ & ¾ E	(2)½, (1)½ & ¾ E	50	785991-07177

X11234 shallow open back box diagrams



X71234 deep open back box diagrams



Accessories

Cat. no.	Description	UPC no.
GEE	Ground clip	785991-11028
52C1	Blank cover	785991-13790

ABB Installation Products Inc.
Electrification Products Division
860 Ridge Lake Blvd.
Memphis, TN 38120

tnb.abb.com

We reserve the right to make technical changes or modify the contents of this document without prior notice. With regard to purchase orders, the agreed particulars shall prevail. ABB Inc. does not accept any responsibility whatsoever for potential errors or possible lack of information in this document.

We reserve all rights in this document and in the subject matter and illustrations contained therein. Any reproduction or utilization of its contents – in whole or in parts – is forbidden without prior written consent of ABB Inc.
Copyright© 2018 ABB
All rights reserved