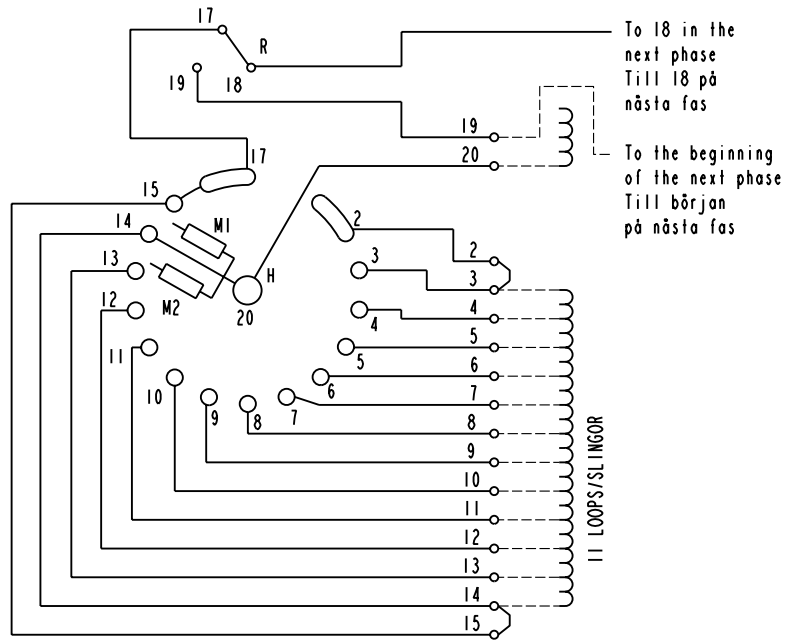


We reserve all rights in this document and in the information contained therein. Reproduction, use or disclosure to third parties without express authority is strictly forbidden. © ABB 19

Pos. Läge	R connects förbinder	H connects förbinder
1	17-18 Y	3-20
2		4-20
3		5-20
4		6-20
5		7-20
6		8-20
7		9-20
8		10-20
9		11-20
10		12-20
11		13-20
12		14-20
12A	17-19 D	15-20
12B		
12C		
13C		
13B		2-20
13A		
13		3-20
14		4-20
15		5-20
16		6-20
17		7-20
18		8-20
19	9-20	
20	10-20	
21	11-20	
22	12-20	
23	13-20	
24	14-20	

On-load tap-changer type UZEYD, UZFYD, Y/D switching, 12 positions in Y and 12 positions in D. Max effective No. of turns in pos. 1 and in pos. 13. The tap-changer is delivered set in pos. 12.

Lindningskopplare typ UZEYD, UZFYD, Y/D koppling, 12 lägen i Y och 12 lägen i D. Max antal effektiva varv i läge 1 och läge 13. Lindningskopplaren levereras inställd i läge 12.



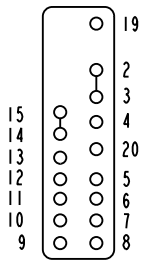
When operating from pos. 12 to 13 and from 13 to 12 the transformer must be de-energized.

Vid manöver från läge 12 till 13 och från 13 till 12 måste transformatorn vara spänningslös.

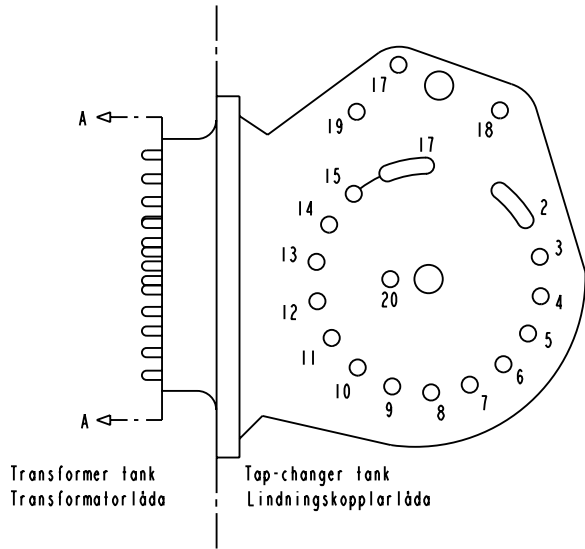
The tap-changer is shown in pos. 12
Lindningskopplaren visad i läge 12

- R Y/D change-over selector
Y/D-omkopplare
- H Main contact
Huvudkontakt
- MI, M2 Transition contacts
Motståndskontakter

Terminal board
Plint



Section A-A
Sektion A-A



Sheet	Cont
Year	Week
Dept	
Rev	Ind
Design checked by	
Form No.	

Rev	Ind	Revision	Appd	Year	Week
-	-				
Accepted by qual control R. Yngvesson			Accepted for prod by		
Design checked by B-O. Stenestam			Drawn by L. Bergman		
Drawing checked by M. Hedlund			Issued by Dept Year Week COM/TKO 97 34		
			Asea Brown Boveri		
Description (English) CONNECTION DIAGRAM					DATA ORIGINAL
Description (own language) KOPPLINGSSCHEMA					File name 0399-8
					Lang Sheet 1
					Rev Ind Cont -

5492 0399-8