

This webinar brought to you by the Relion[®] product family Advanced protection and control IEDs from ABB

Relion. Thinking beyond the box.

Designed to seamlessly consolidate functions, Relion relays are smarter, more flexible and more adaptable. Easy to integrate and with an extensive function library, the Relion family of protection and control delivers advanced functionality and improved performance.



ABB Protective Relay School Webinar Series

Disclaimer

ABB is pleased to provide you with technical information regarding protective relays. The material included is not intended to be a complete presentation of all potential problems and solutions related to this topic. The content is generic and may not be applicable for circumstances or equipment at any specific facility. By participating in ABB's web-based Protective Relay School, you agree that ABB is providing this information to you on an informational basis only and makes no warranties, representations or guarantees as to the efficacy or commercial utility of the information for any specific application or purpose, and ABB is not responsible for any action taken in reliance on the information contained herein. ABB consultants and service representatives are available to study specific operations and make recommendations on improving safety, efficiency and profitability. Contact an ABB sales representative for further information.

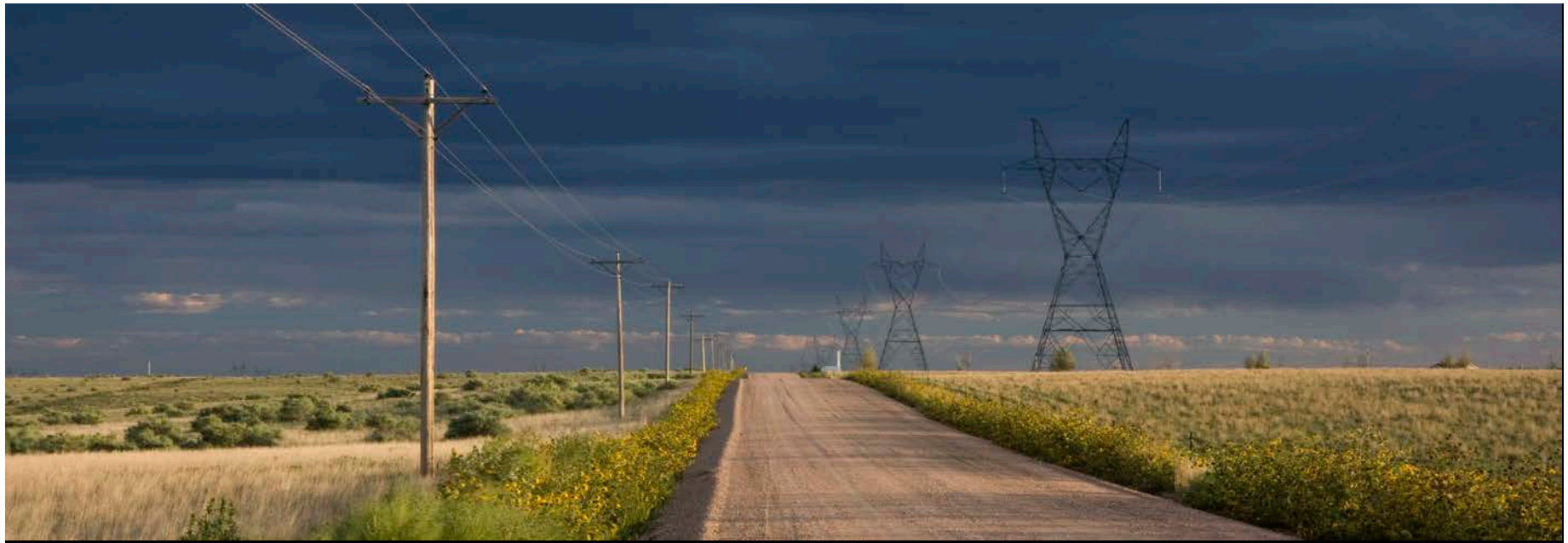


ABB Protective Relay School Webinar Series

Input sources for protective relays

Elmo Price

July 23, 2012

Presenter



Elmo Price

Elmo received his BSEE from Lamar State College of Technology in Beaumont, Texas and his MSEE degree in Power Systems Engineering from the University of Pittsburgh.

He began his career with Westinghouse in 1970 and worked in many engineering positions. He also worked as a district engineer located in New Orleans providing engineering support for Westinghouse power system products in the South-central U.S.

With the consolidation of Westinghouse into ABB in 1988, Elmo assumed regional responsibility for product application for the Protective Relay Division. From 1992 to 2002 he worked in various technical management positions responsible for product management, product design, application support and relay schools. From 2002 to 2008 Elmo was a regional technical manager providing product sales and application support in the southeastern U.S.

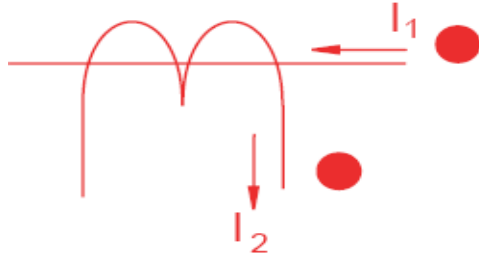
Elmo is currently senior consultant for ABB, a registered professional engineer and a Life Senior member of the IEEE. He is a member of the IEEE Power System Relay Committee and the Line Protection Subcommittee, serving as a contributing member to many working groups. He has two patents and has authored and presented numerous industry papers.

Learning objectives

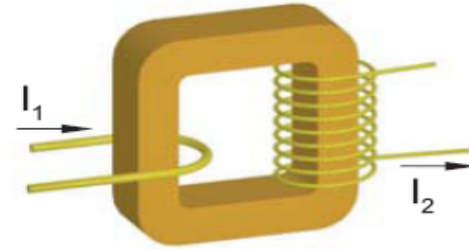
- What are Instrument Transformers ?
- What are the application issues with voltage transformers ?
- What are the application issues with CCVT's ?
- What are the application issues with current transformers ?
- What are non conventional instrument transformers ?

Instrument transformer symbols

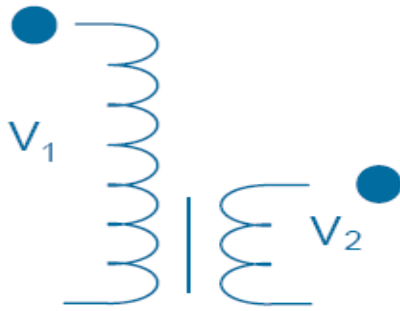
Symbol of a
Current Transformer



Conceptual picture of
a Current Transformer



Symbol of a
Voltage Transformer



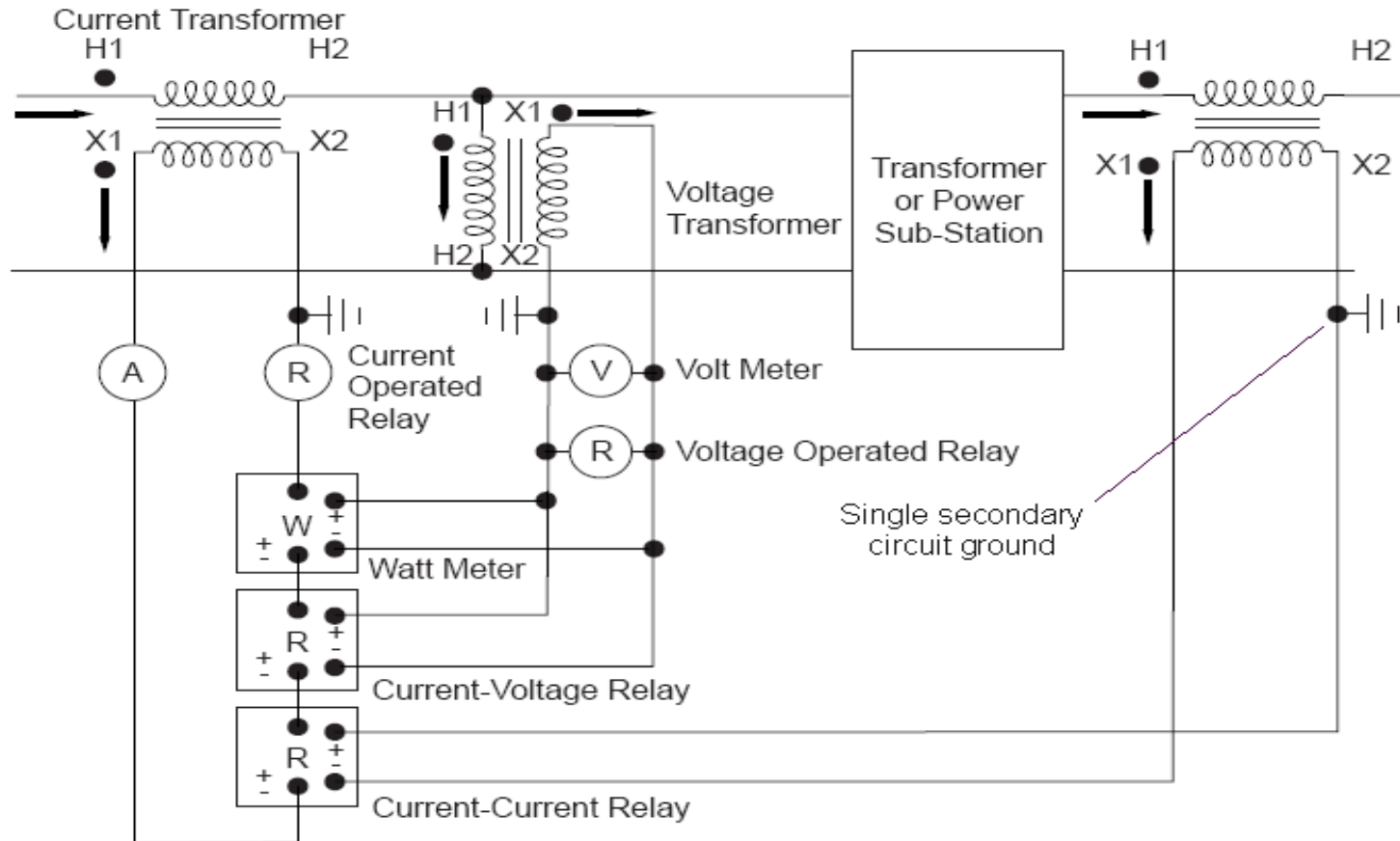
Conceptual picture of
a Voltage Transformer



Purpose

- Accurately reproduce primary voltage and current signals at secondary levels suitable for protective relays, meters, etc.
- Provide secondary circuit isolation
 - High voltage transients occurring on the primary system
 - Secondary circuit isolation
- Design
 - VTs are designed to minimize voltage magnitude and phase angle error. Series leakage [and lead] losses are minimized
 - CTs are designed to minimize current magnitude and phase angle error. Magnetizing impedance is maximized.

Instrument transformer connections



Types of instrument transformers

- Voltage transformation
 - Electromagnetic voltage transformer
 - Coupling capacitance voltage transformer
 - Optical voltage transformer
- Current transformation
 - Electromagnetic current transformer
 - Optical current transformer
 - Rogowski coil

Voltage Transformers

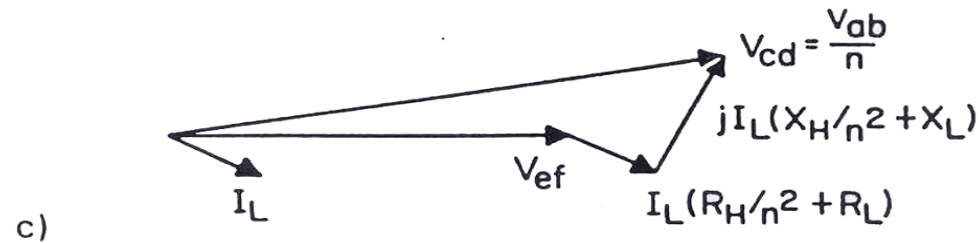
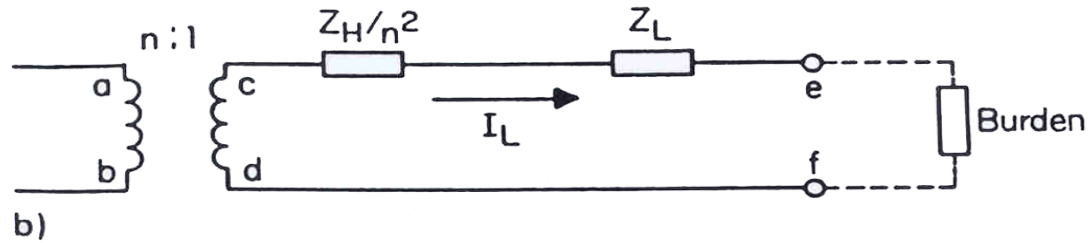
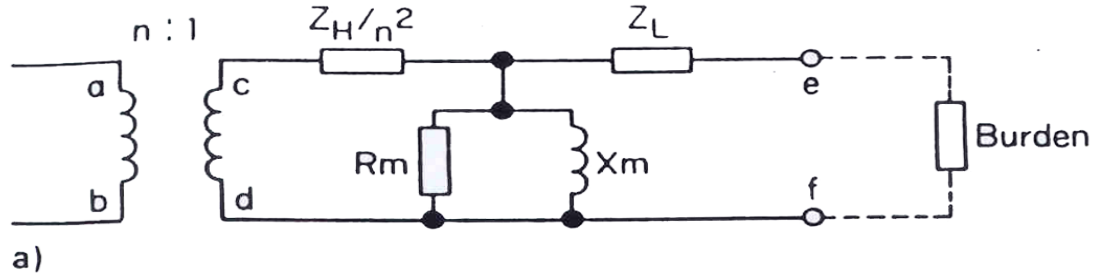
Voltage transformer (VT/PT)



Inductive Voltage Transformer

- Do not differ materially from constant-potential power transformers except
 - Power rating is small
 - Designed for minimum ratio & phase angle error
- Application limited to lower transmission and distribution voltages due to cost
 - Full winding
 - Cascade

Equivalent circuit of a VT

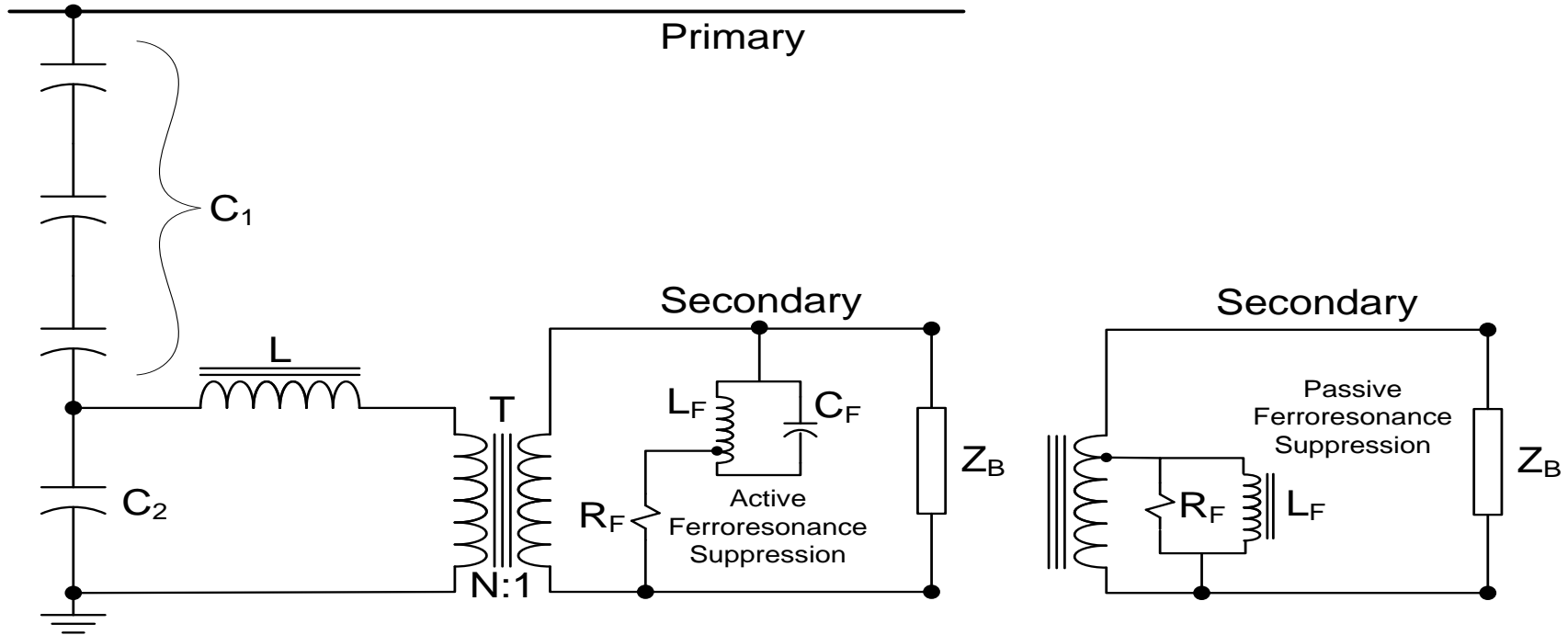


CCVT (CVT) - Coupling Capacitance Voltage Transformer

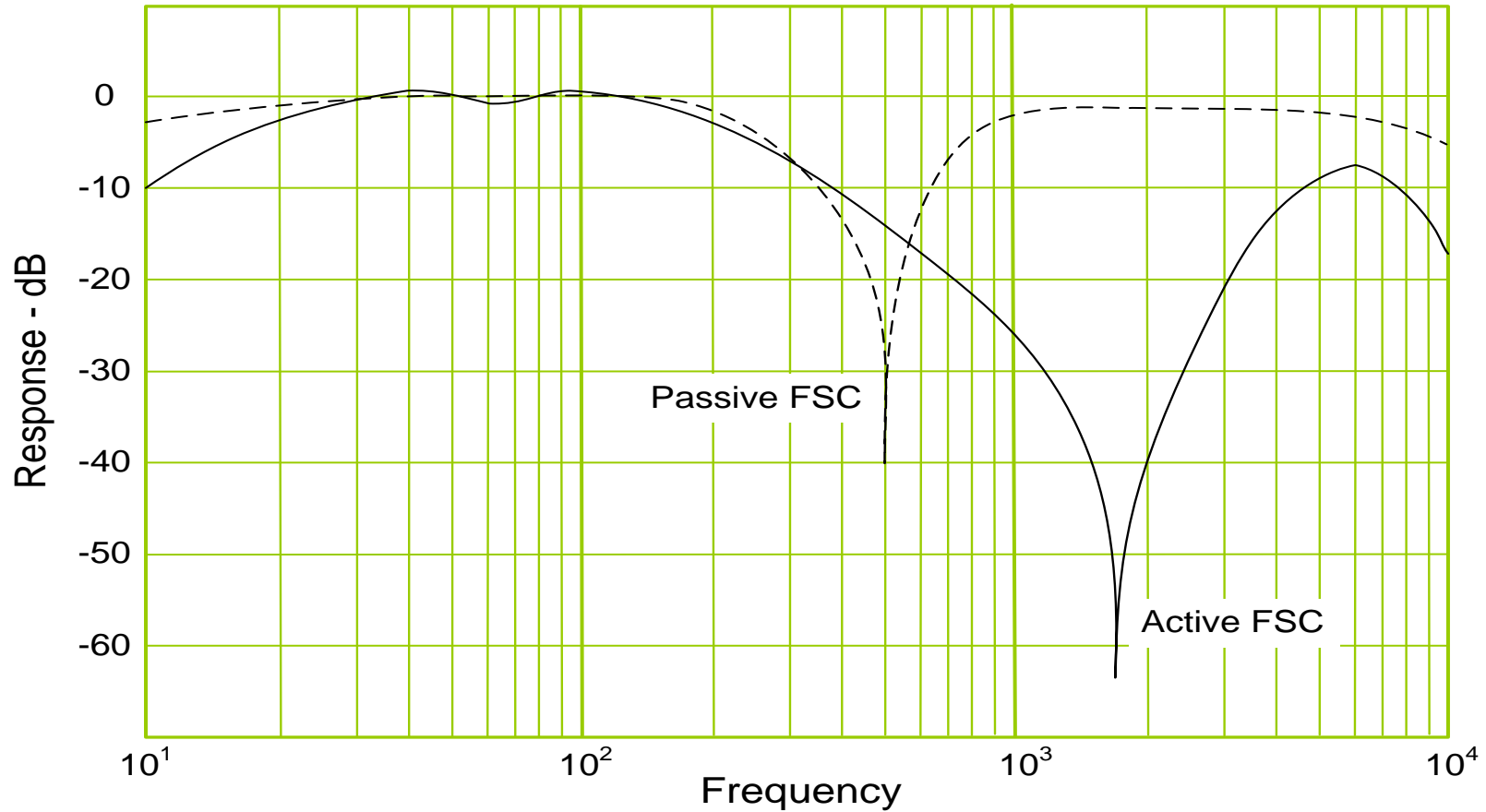


- CCVTs are less expensive than inductive VTs at higher voltage level
- Bases on capacitive coupling with low voltage inductive transformer
- Subsidence transient issues due to capacitive and inductive response to system transient voltages (Zone-1 Overreach)

Simplified schematic of a CCVT



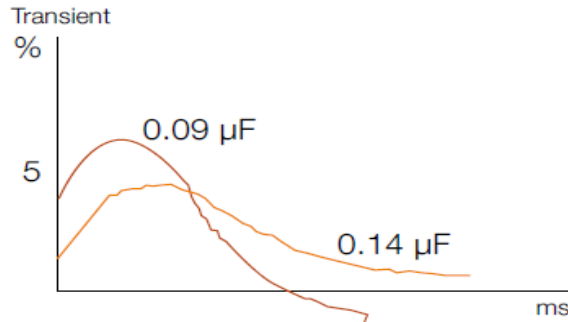
CCVT frequency response



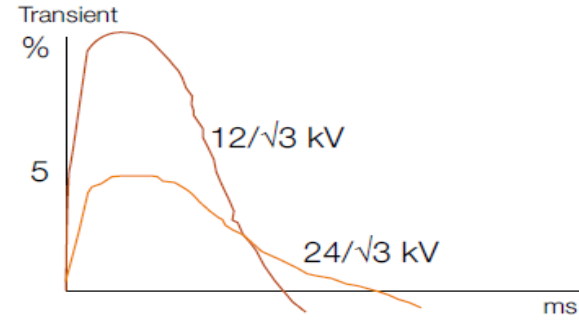
Parameters that affect CCVT performance

- Controlled by CCVT design
 - Magnitude of tap and stack capacitance C_1 and C_2
 - Turns ratio of the intermediate transformer T
 - Type of ferroresonant suppression system
- Controlled by user
 - Magnitude and p.f. of the burden
- At power system's mercy
 - Voltage transient characteristics
 - Point on voltage wave where the fault occurs
 - Magnitude of voltage dip (fault inception voltage)

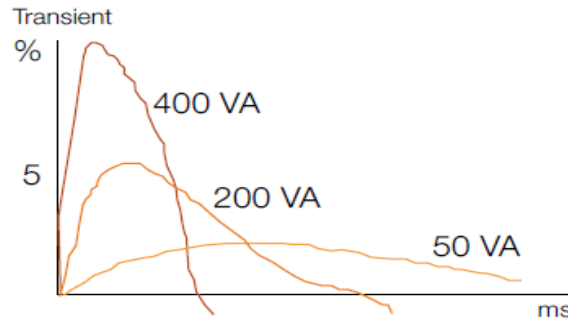
Transient response for current design



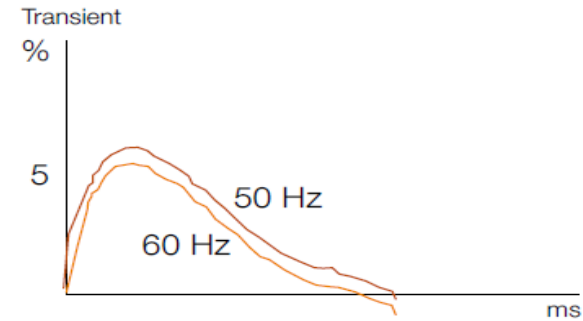
Equivalent capacitance



Intermediate voltage



Burden



Frequency

Parameters that affect CCVT Performance

Parameter	Small Transient	Large Transient
Magnitude of tap and stack capacitance C_1 and C_2	High	Low
Turns ratio of the intermediate transformer T	High	Low
Type of ferroresonant suppression system	Passive	Active
Magnitude and p.f. of the burden	Resistive	Inductive

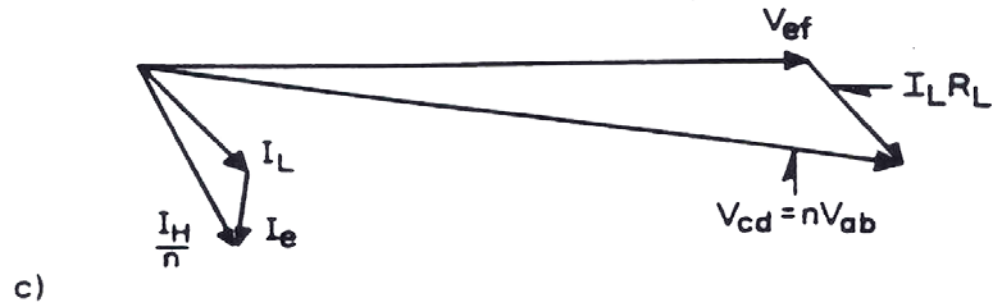
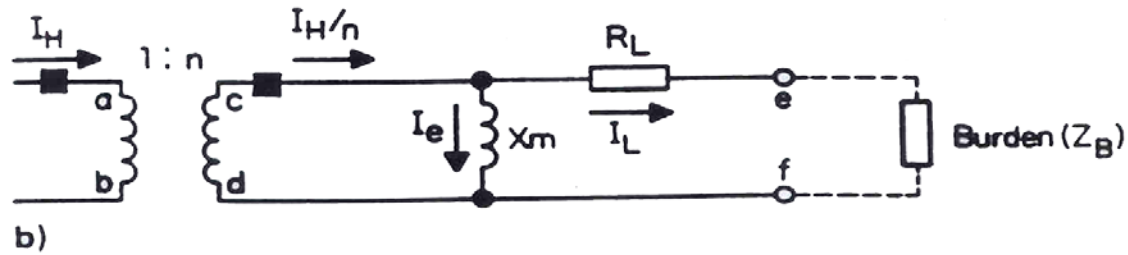
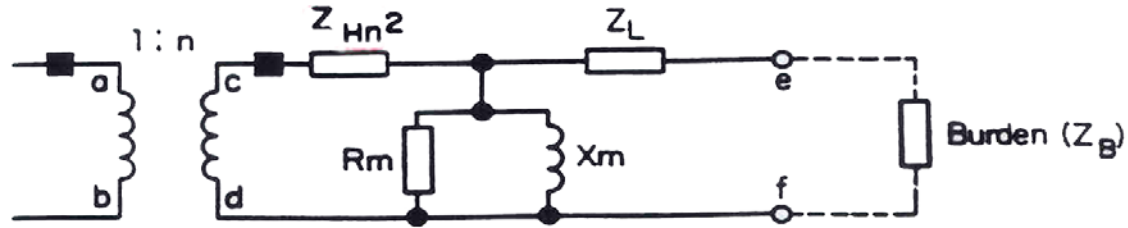
Current Transformers

Current transformers



- Current transformer primary connected in series with the line
 - Primary current is determined entirely by system load and not by CT secondary load
- Free-standing
- BCT - bushing mounted
 - Internal
 - External
- Bus and cable
- Ratio of transformation is approximately inverse ratio of turns

Equivalent circuit of a CT



Current transformer

- Secondary winding should never be open-circuited
 - Flux in the core, instead of being the difference of the primary & secondary ampere-turns, will now be due to the total primary ampere-turns acting alone
 - This causes a large increase in flux, producing excessive core loss & heating, as well as high voltage across the secondary terminals
 - At zero crossing of ac (60 Hz) flux large voltage spikes occur

Selection of CTs

- Evaluating steady state performance
 - Formula method
 - Excitation curves
 - ANSI accuracy classes
- Transient performance

Steady state performance of CT

- Formula method
 - Step 1: Determine voltage required to be supplied by the CT

$$V_{S(REQ)} = I_L (Z_L + Z_{Lead} + Z_{Relay}) \text{ volts}$$

Steady state performance of CT

- Formula method
 - Step 2: Determine voltage developed by the CT

$$V_{S(CAP)} = 4.44 fANB_{MAX} * 10^{-8} \text{ volts}$$

f = frequency - Hz (60)

A = cross - sectional area of iron core - in²

N = turns ratio

B_{MAX} = flux density, lines/in²

$$77,500 \leq B_{MAX} \leq 125,000$$

Steady state performance of CT

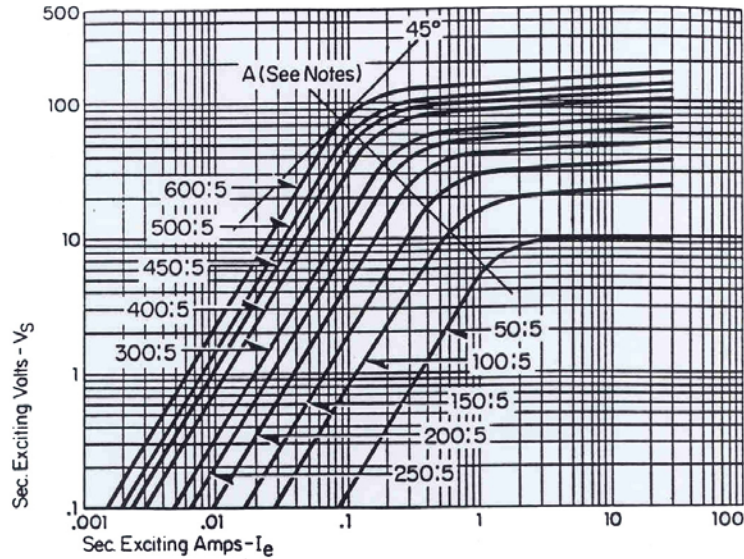
Formula method

- Step 3: Compare: $B_{REQ} < B_{MAX}$

$$B_{REQ} = \frac{V_{S(REQ)} \cdot 10^8}{4.44 \cdot 60 \cdot A \cdot N}$$

$$B_{MAX} \text{ (typical)} = 100,000 \text{ lines/in}^2$$

Steady state performance of CT



Current Ratio	Turn Ratio	Sec. Res. 1
50:5	10:1	.061
100:5	20:1	.082
150:5	30:1	.104
200:5	40:1	.125
250:5	50:1	.146
300:5	60:1	.168
400:5	80:1	.211
450:5	90:1	.230
500:5	100:1	.242
600:5	120:1	.296

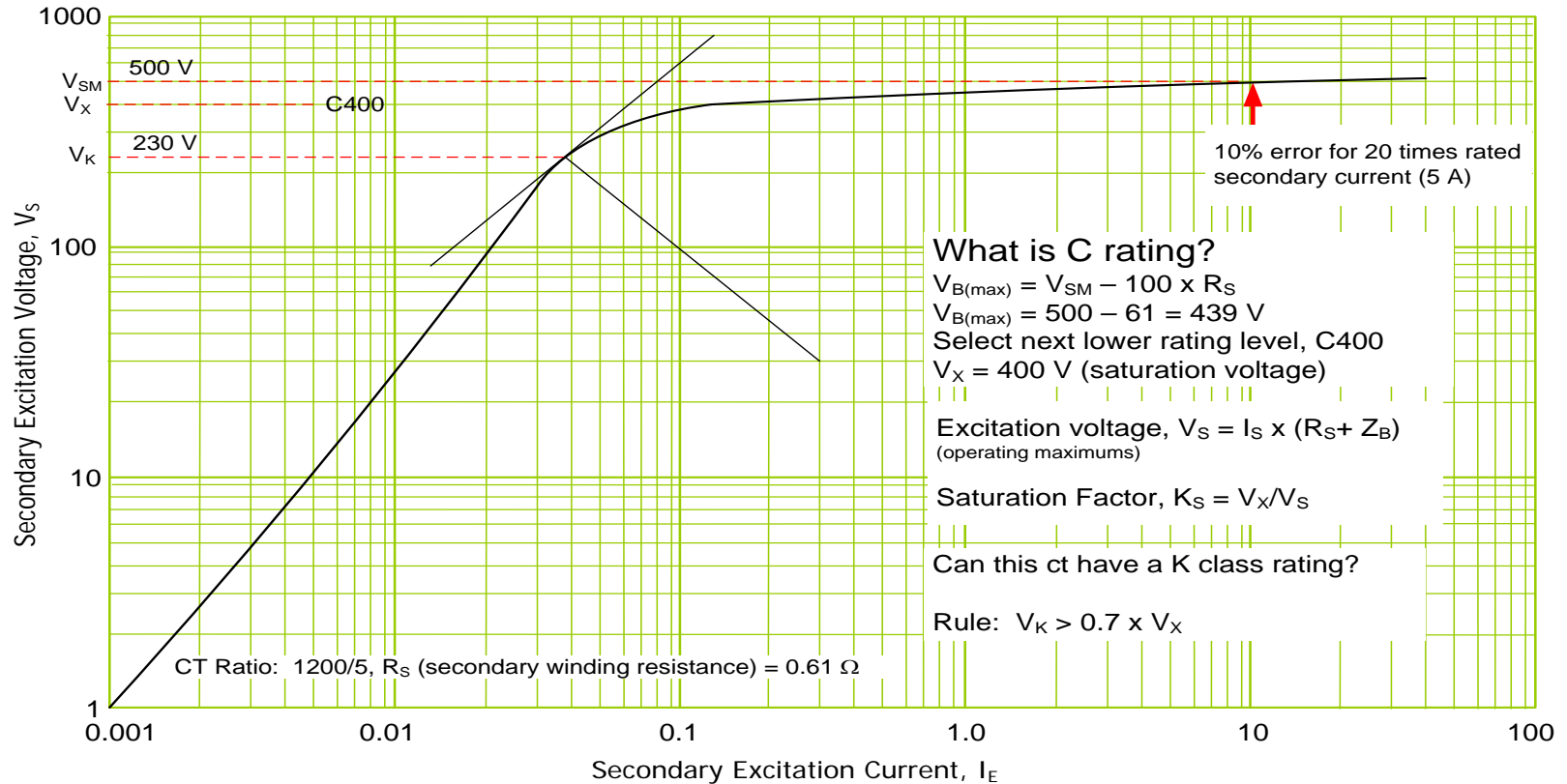
Notes:

- 1) Above The Line, The Voltage for a Given Exciting Current Will Not be Less Than 95% of The Curve Value.
- 2) Below The Line, The Exciting Current for a Given Voltage Will Not Exceed The Curve Value by More Than 25%.

Excitation curves method

- Exciting current requirements for a given secondary voltage
- Current obtained by applying voltage to secondary terminals
- Knee point
 - Log-log plot
 - Square decades
 - I.e. (.01,1) – (.1,10)
 - Tangent 45° line

Steady State Performance of CT



What is C rating?

$V_{B(max)} = V_{SM} - 100 \times R_s$
 $V_{B(max)} = 500 - 61 = 439$ V
 Select next lower rating level, C400
 $V_X = 400$ V (saturation voltage)

Excitation voltage, $V_s = I_s \times (R_s + Z_B)$
 (operating maximums)

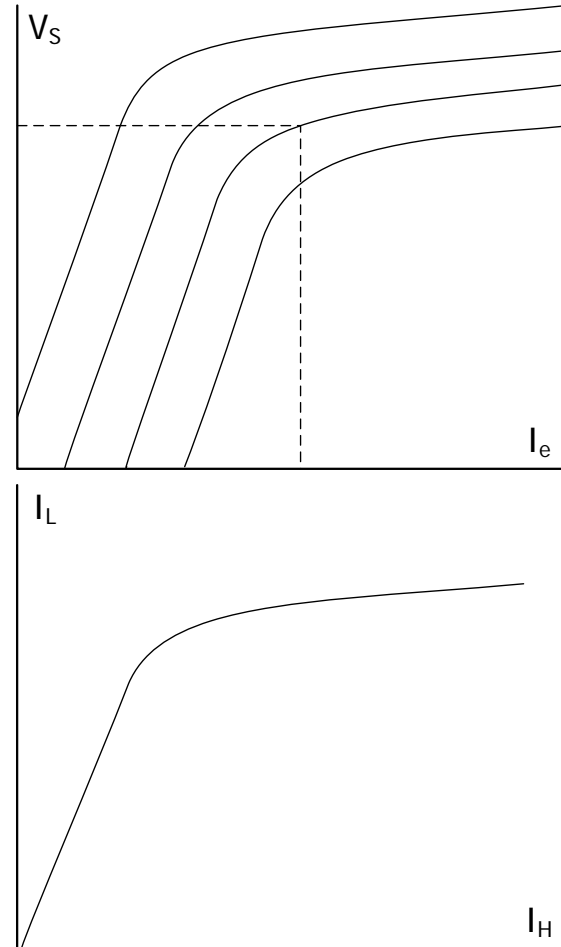
Saturation Factor, $K_s = V_X / V_s$

Can this ct have a K class rating?

Rule: $V_K > 0.7 \times V_X$

Steady state performance of CT

1. Assume I_L
2. $V_S = I_L Z_T$
 - $Z_T = Z_L + Z_{Lead} + Z_B$
3. With V_S , find I_e from curve
4. $I_H = I_L + I_e$
5. Repeat and plot I_H vs. I_L curve



ANSI accuracy class

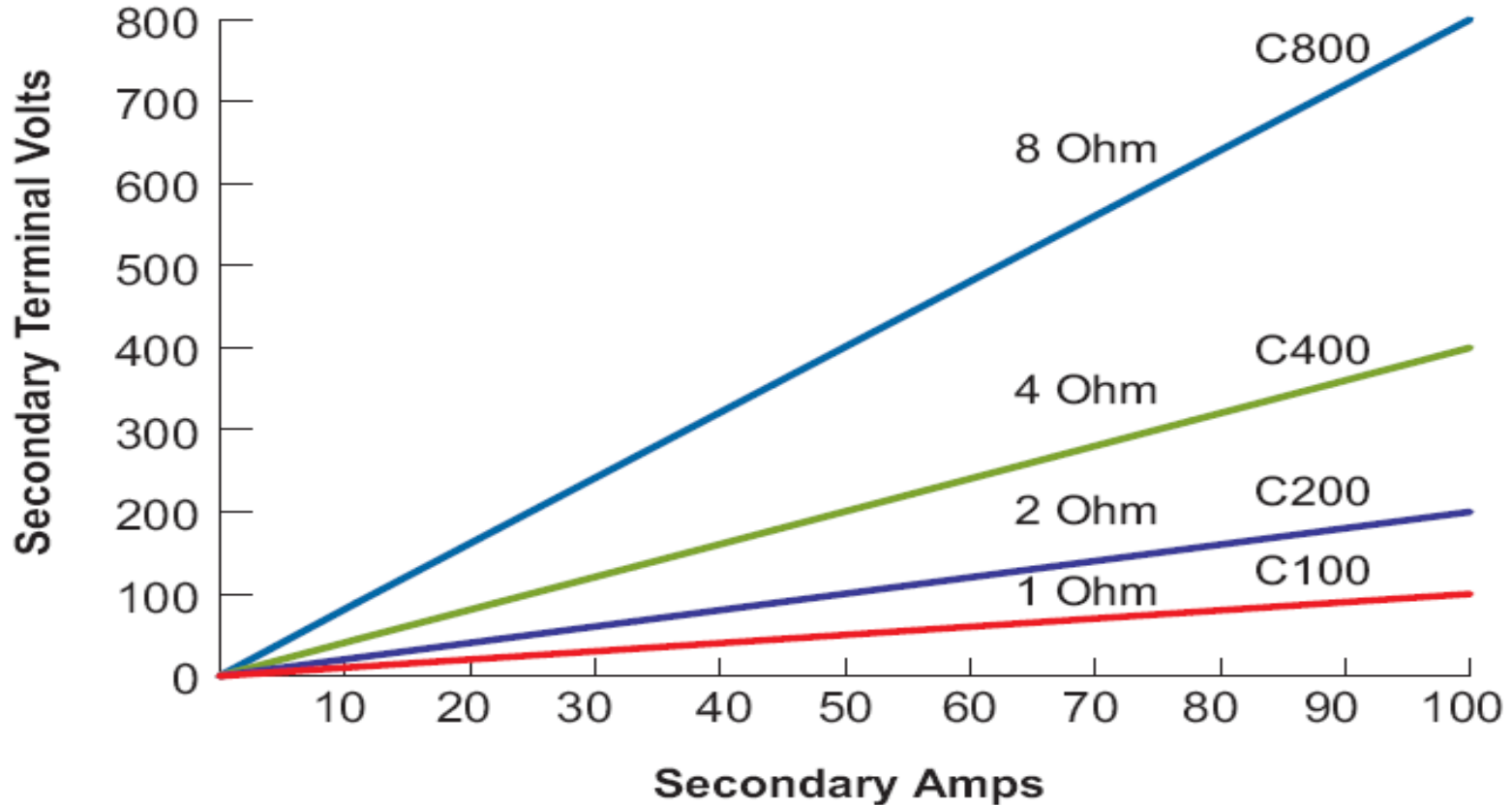
- Relaying accuracy classes for CTs are defined with a “C” or “T” classification
 - Class C indicates that the transformer ratio can be calculated
 - leakage flux is negligible
 - The CT ratio error can thus be calculated
 - The excitation characteristic can be used directly to determine performance
 - Class T indicates that the transformer ratio can only be determined by test
 - Leakage impedance is NOT negligible

ANSI accuracy class

- Basis for classification
 - Error $\leq 10\%$
 - Current range 1 – 20 times normal
- The classification defines how much voltage the CT can supply to the output (burden) without the CT core going into saturation
- Standard accuracy classes, which may be assigned for a relaying CT, are 50, 100, 200, 400 and 800

ANSI accuracy class

Standard chart for class C current transformers



CT Transients

Transients in power system

- Faults on power system are sudden
- Faults are accompanied by transients
- These transients may last only for a few cycles of system frequency
- Transients may effect the performance of fast- acting devices: protective relays, circuit breakers

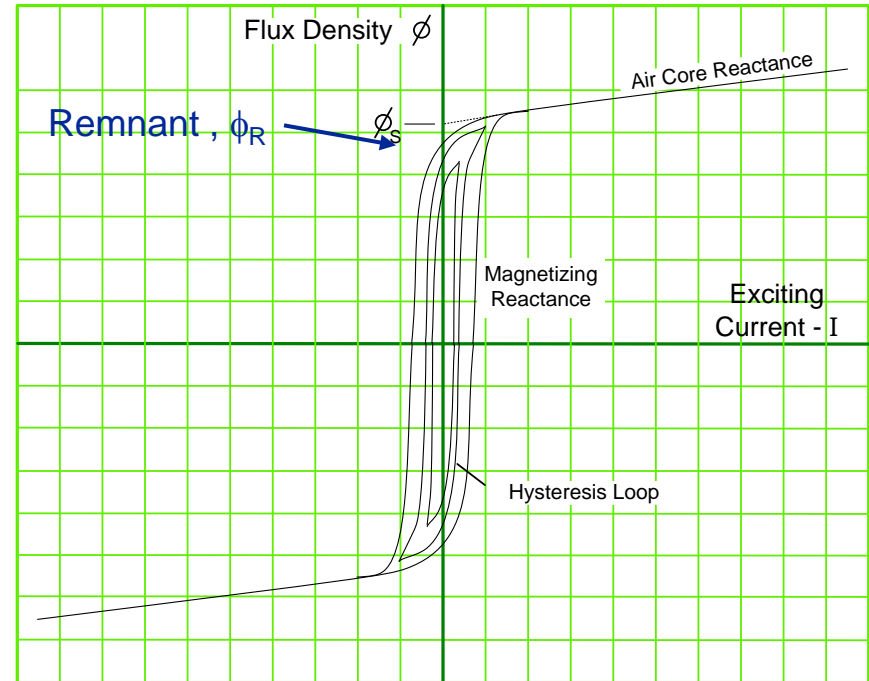
D.C. saturation of a CT

Saturation of a CT may occur as a result of any one or combination of:

- Remnant (residual) flux in the core
- Off-set fault currents (dc component)

Remnant Flux

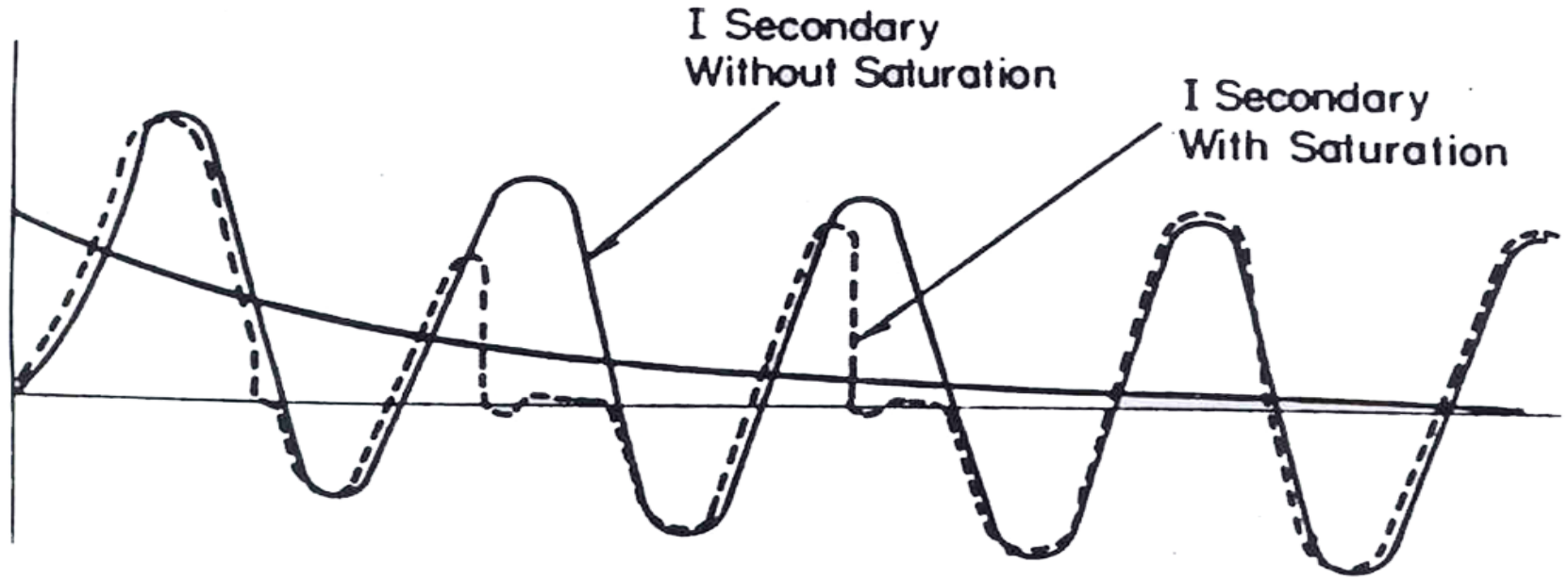
- Results from hysteresis
- Depends largely on the instantaneous flux in the core immediately prior to primary fault current (source of flux field) interruption
- The remnant flux is also developed due to dc polarity test
- Normal load current may reduce the amount of remnant flux, but not eliminate it.
- Requires demagnetization



Remnant flux

- To avoid saturation during a fault with the most unfavorable remnant flux requires about 3 times the core area otherwise needed when using a closed iron core
- The remnant flux is also developed due to polarity test using battery (CT should be demagnetized following the test)

D.C. Saturation effect in current



Remnant Flux and DC Offset

- Avoiding Saturation
 - Steady state
 - Effect of primary DC offset
 - Effect of worst case saturation

$$V_X > I_S \cdot Z_S$$

$$V_X > I_S \cdot Z_S \left(1 + \frac{X}{R} \right)$$

$$V_X > \frac{I_S \cdot Z_S \left(1 + \frac{X}{R} \right)}{1 - \frac{\varphi_R}{\varphi_S}}$$

Analyzing Transient Response of CT

- Possibly sufficient time for relay operation prior to ct saturation
- Time to Saturation
 - Possible maximum remnant flux
 - Level of fault current
 - System time constant
 - Parameters of ct and burden

$$t_S = -\frac{X}{\omega R} \cdot \ln \left(1 - \frac{K_S - 1}{\frac{X}{R}} \right)$$

$t_S = \text{time to saturate}$

$\omega = 2\pi f$ - f is system frequency

X = primary reactance to point of fault

R = primary resistance to point of fault

K_S = saturation factor

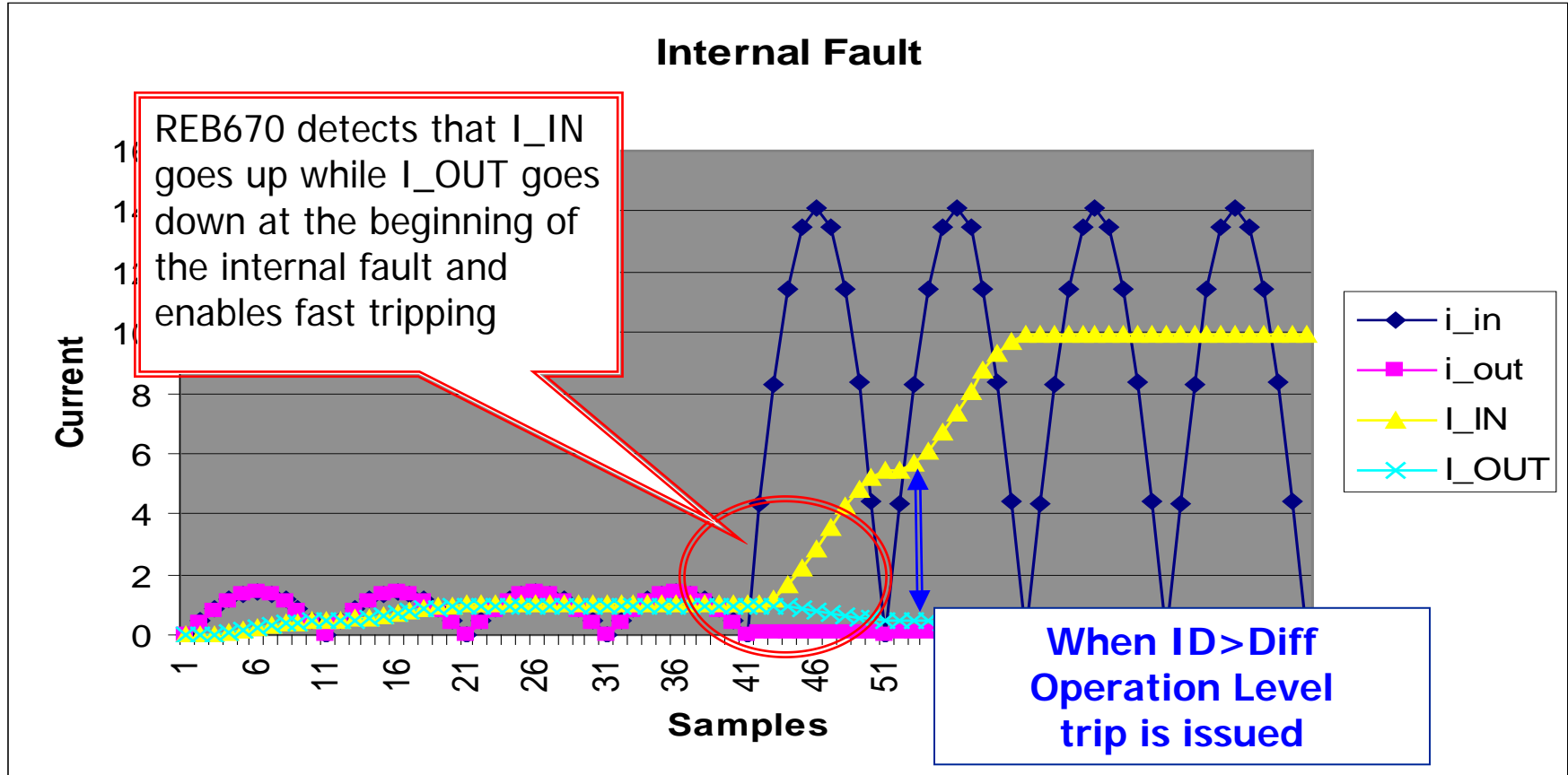
Protective relay designs to address CT issues

- Most common issues
 - CT saturation
 - Open CT
- Can be addressed in modern microprocessor relays

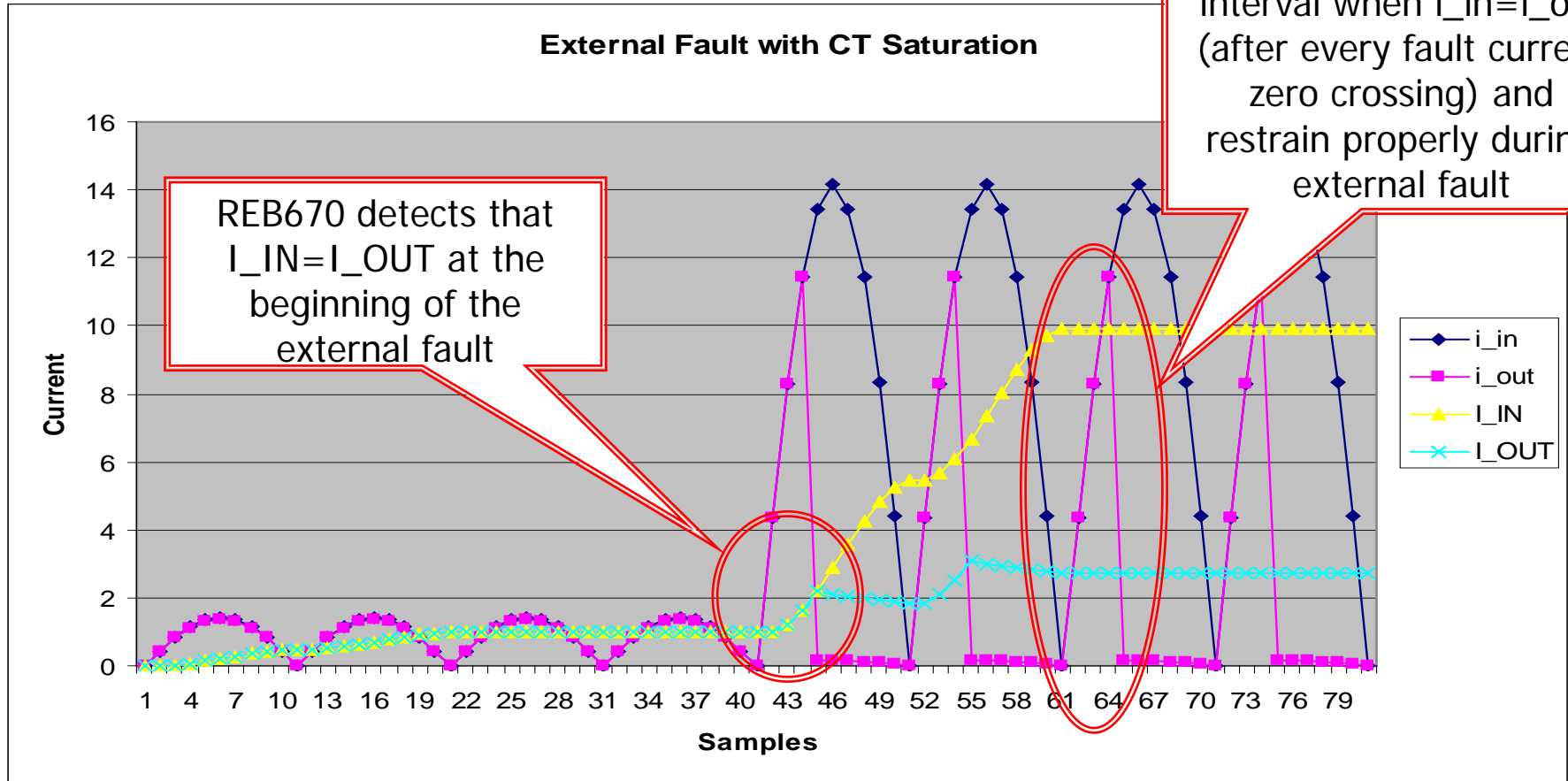
REB670 operating principles

- Next slides will visualize the behavior of REB670 terminal during:
 - Internal fault
 - External fault with CT saturation
 - Open CT condition
- Disturbance occurs at sample No 41 on all of the following slides

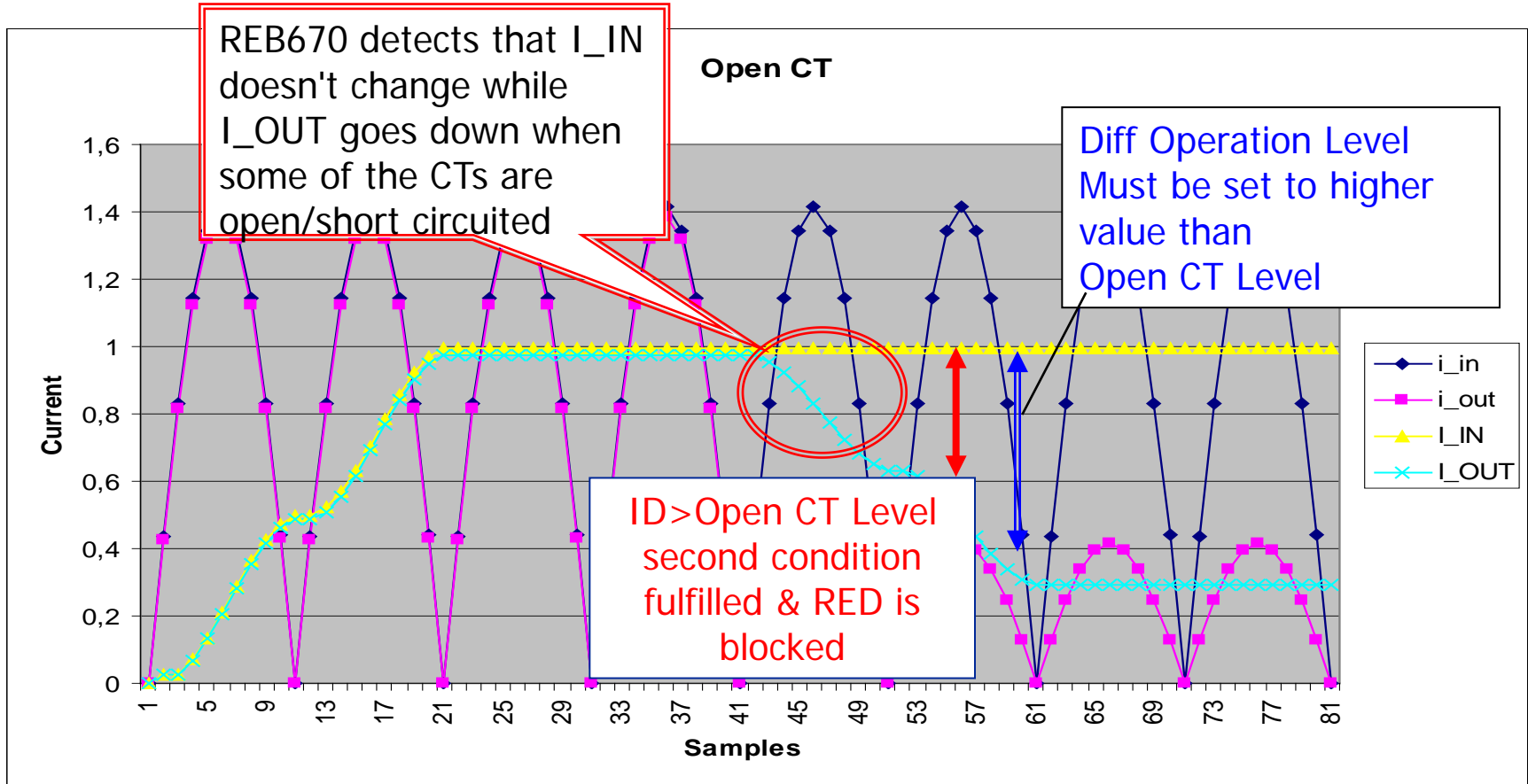
Quick operation for internal fault



Proper and secure restraint



Fast open CT algorithm



New Sensor Technology

Non-traditional Instrument Transformers

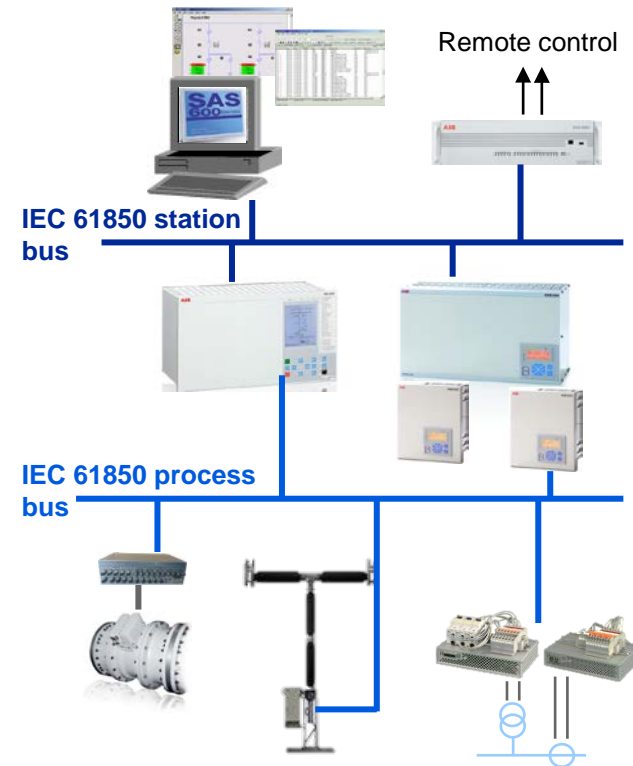
New sensor technology

- Traditional instrument transformers were required to meet the high power output requirements for electromechanical protection and control apparatus
- Today's modern digital IEDs and process bus communications do not require high power sensors
- New sensor technologies are based on “old” proven concepts applied in new ways
- New sensor technology offers:
 - Reduced wiring costs
 - Reduced weight
 - Designed integration with primary system apparatus
 - Immunity to electromagnetic interference
 - Greatly improved accuracy

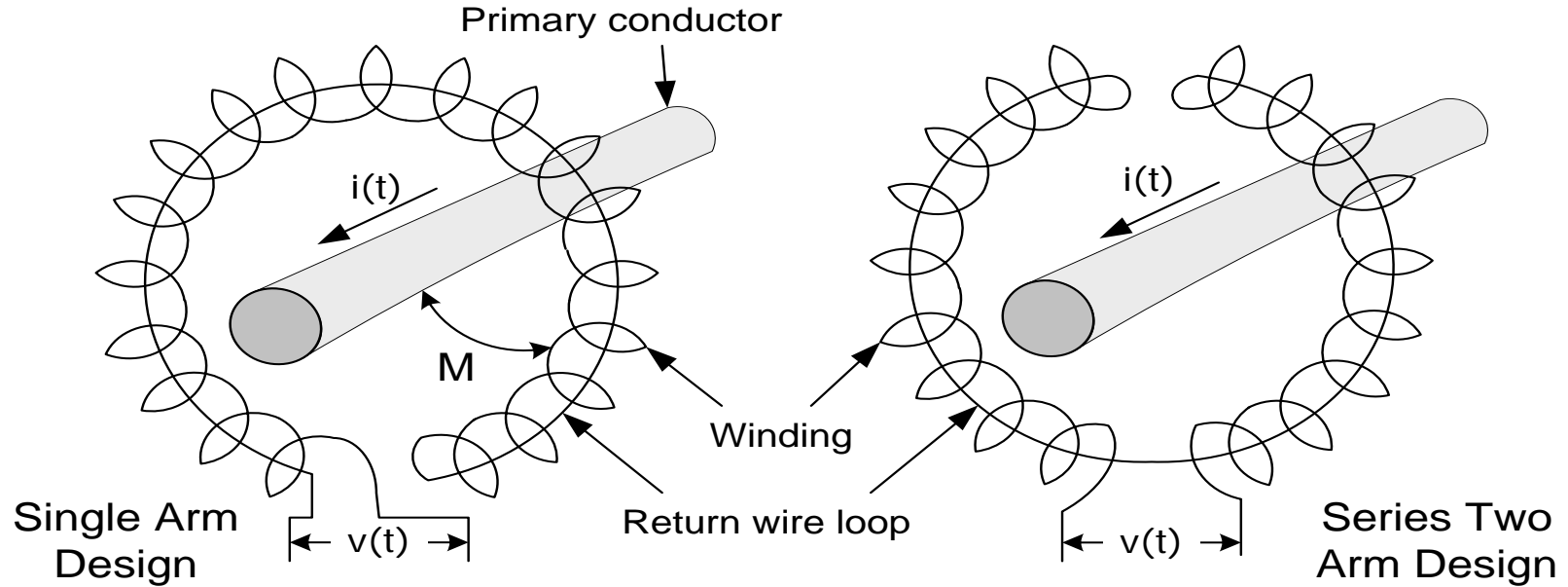
New sensor technology enables the digital substation

- Types of new sensor technologies
 - Rogowski coils for current measurement
 - Fiber-optic current sensors
- Provides digital signals to relays using IEC 61850-9-2LE

- Supporting the digital substation architecture



Rogowski coils



Rogowski coils

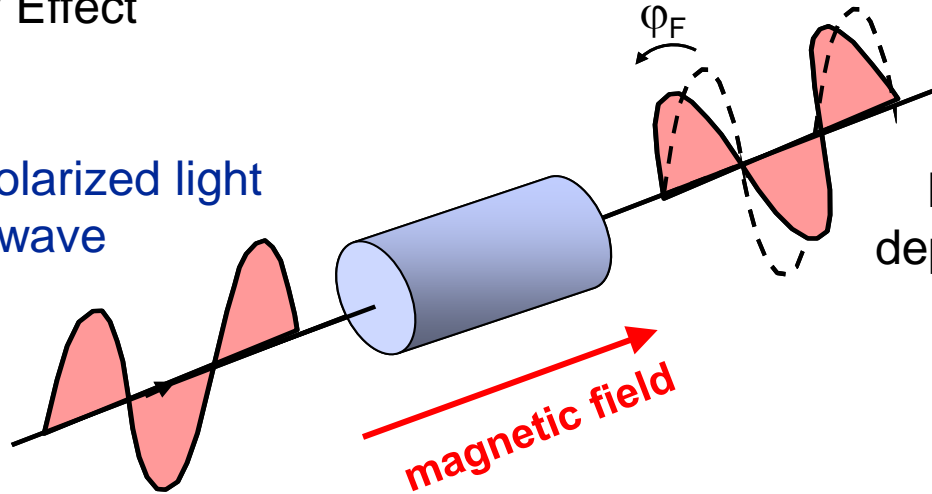
- Advantages

- High measurement accuracy, from less than 1% to 3%
- Wide measurement range, up to 100s of kA
- Wide frequency range, typically 0.1 Hz to 1.0 MHz
- Can withstand unlimited short circuit current
- Can be physically small or large for application flexibility
- Applicable at all voltage levels

Fiber-optic current sensor

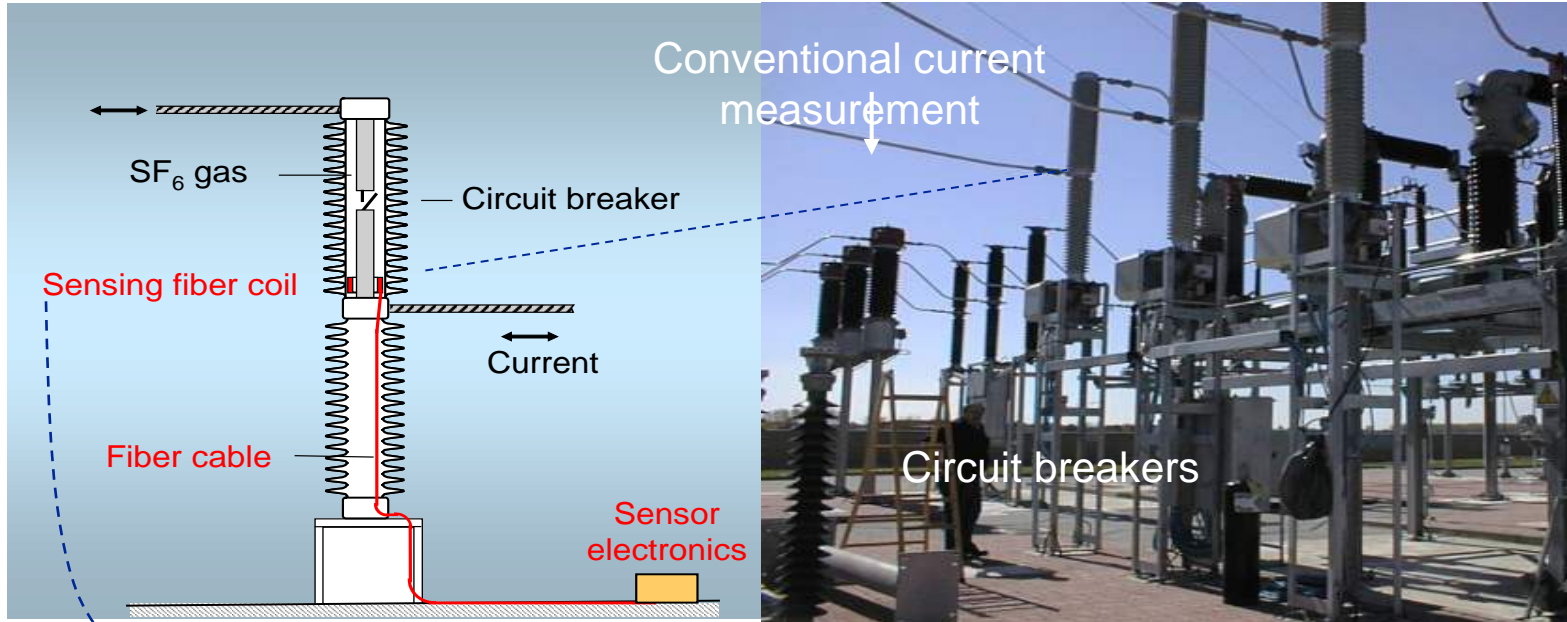
Faraday Effect

linearly polarized light
wave



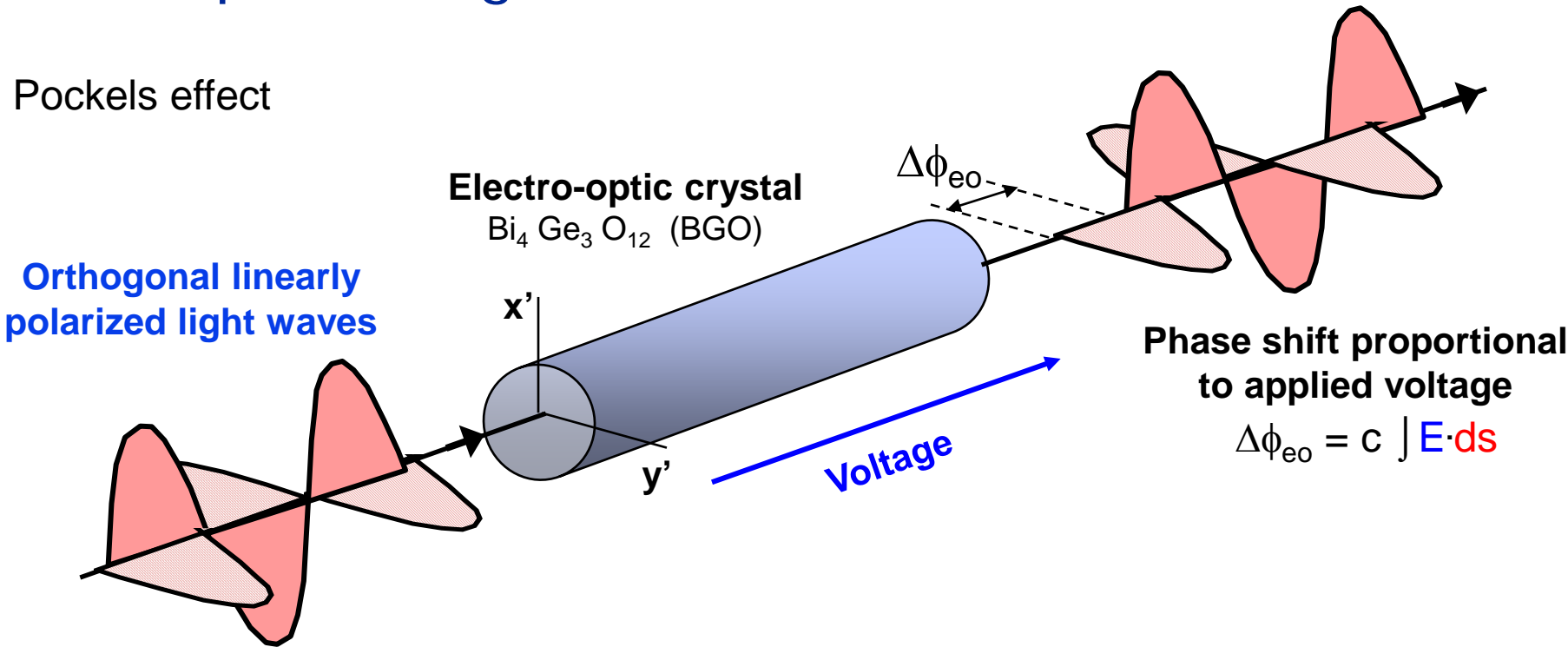
Magnetic field
dependent rotation

Fiber-optic current sensor Applied to 170kV live tank circuit breaker



Electro-Optic Voltage Transducer

Pockels effect

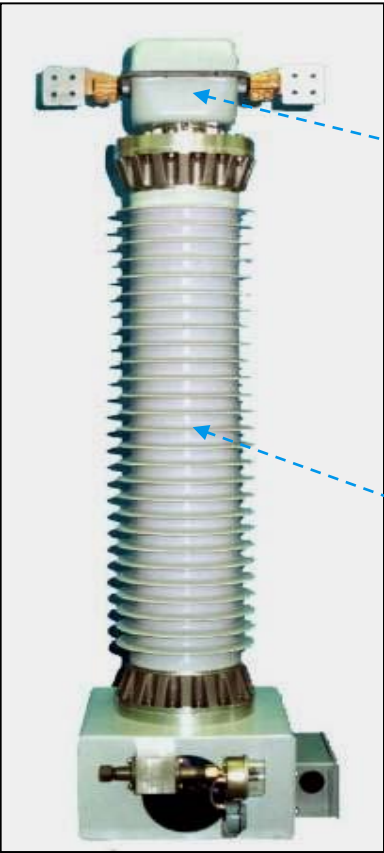


- Electric field introduces refractive index difference for orthogonal light waves
- Results in different speeds of light and differential phase shift

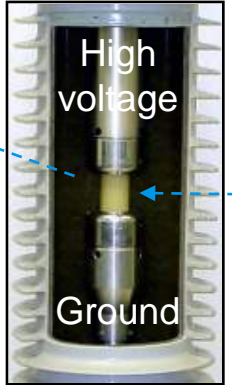
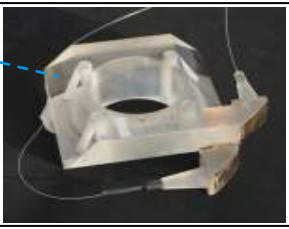
Optical Metering Unit

Current transducer

Voltage transducer



Faraday effect in fused silica glass



Electro-optic effect in BGO crystal

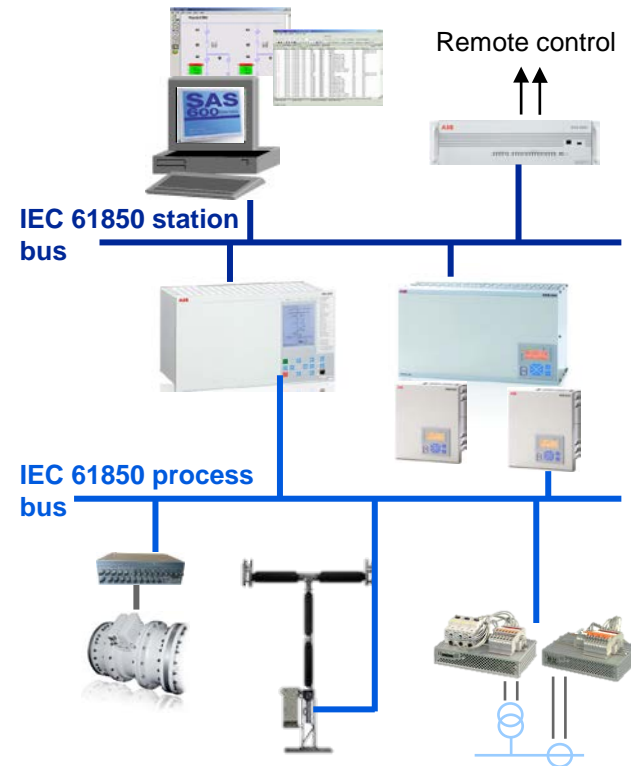
- Combines magneto-optic current transducer (MOCT) and electro-optic voltage transducer (EOVT)
- Senses full line-to-ground voltage
- Compact and lightweight
- Ideal for addition of revenue metering to existing substations with limited space
- High accuracy (class 0.2)



New sensor technology enables the digital substation

- Hybrid solution can use conventional ITs and convert to digital process bus
 - Utilize IEC 61850-9-2LE with 80 samples/cycle for protection and operational metering

- Supporting the digital substation architecture



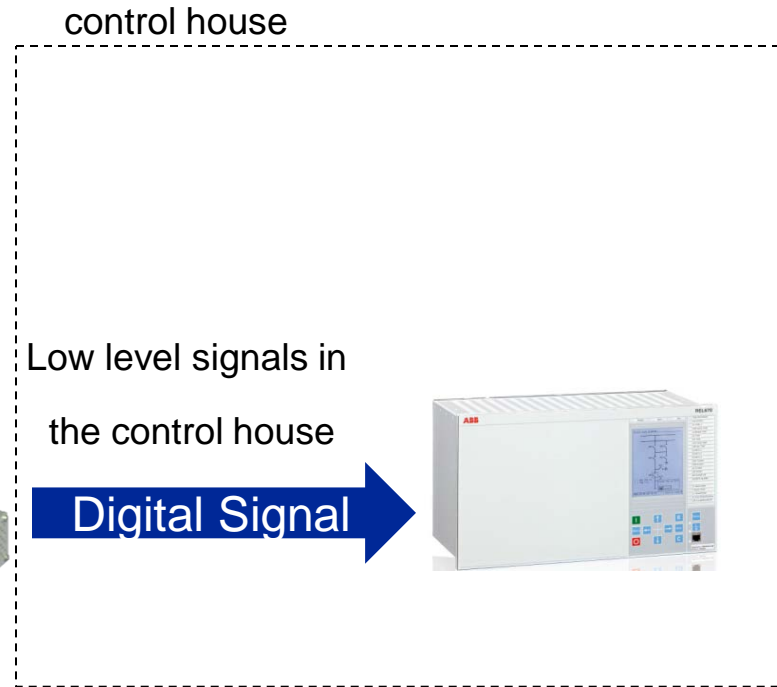
Hybrid Solution using a Merging Unit (MU)



Analog Signal



SAM600-CT



Standards

Standards

- ANSI C93.1-1990
 - Power-Line Carrier Coupling Capacitors and Coupling Capacitors and Coupling Capacitor Voltage Transformers (CCVT) – Requirements (<http://www.ansi.org>)
- IEC 60186 (1987-01) (<http://www.iec.ch>)
 - Voltage transformers
 - (89 pp, Maintenance date 2000)
- IEC 60044 : Refer different parts of the standard

Standards

- ANSI/IEEE C57.13-1993
 - IEEE Standard Requirements for Instrument Transformers (<http://www.ansi.org>)
- IEEE C37.110-2007
 - Guide for the Application of Current Transformers used for Protective Relaying (<http://standards.ieee.org/>)
(<http://standards.ieee.org/catalog/olis/relaying.html>)
- IEC 60044 – Refer different Parts (<http://www.iec.ch/>)

Conclusion

Conventional ITs

- CCVT's are commonly used in HV and EHV relaying applications
- Transient response of the CCVT needs to be taken into consideration
- Current transformer application needs to consider both static and dynamic performance when sizing
- Time to saturation of a current transformer is an important criteria in relaying
- Burden is a critical factor in CT selection

Non-Conventional ITs

- Non conventional instrument transformers avoid many of the traditional concerns while improving safety and reliability
 - GIS and AIS solutions available
- Hybrid solution with MU offers path to digital substation

This webinar brought to you by the Relion® product family Advanced protection and control IEDs from ABB

Relion. Thinking beyond the box.

Designed to seamlessly consolidate functions, Relion relays are smarter, more flexible and more adaptable. Easy to integrate and with an extensive function library, the Relion family of protection and control delivers advanced functionality and improved performance.



Thank you for your participation

Shortly, you will receive a link to an archive of this presentation.
To view a schedule of remaining webinars in this series, or for more
information on ABB's protection and control solutions, visit:

www.abb.com/reliion

ABB Protective Relay School Webinar Series

Disclaimer

ABB is pleased to provide you with technical information regarding protective relays. The material included is not intended to be a complete presentation of all potential problems and solutions related to this topic. The content is generic and may not be applicable for circumstances or equipment at any specific facility. By participating in ABB's web-based Protective Relay School, you agree that ABB is providing this information to you on an informational basis only and makes no warranties, representations or guarantees as to the efficacy or commercial utility of the information for any specific application or purpose, and ABB is not responsible for any action taken in reliance on the information contained herein. ABB consultants and service representatives are available to study specific operations and make recommendations on improving safety, efficiency and profitability. Contact an ABB sales representative for further information.

Power and productivity
for a better world™

