

## e-Design Release Notes

### **Release 1.9.1 – 19/08/2019**

#### **What's new**

- Italy only: Italian Pricelist updated

#### **Fixed Bugs**

- Minor fixes on products database

Thanks to everyone who reported at [software.tools@it.abb.com](mailto:software.tools@it.abb.com).

---

## Release 1.9.0 – 08/06/2019

### What's new

- Italy only: new Italian Pricelist

### Fixed Bugs

- Minor fixes on products database

Thanks to everyone who reported at [software.tools@it.abb.com](mailto:software.tools@it.abb.com).

## Release 1.8.3 – 08/03/2019

### What's new

- Italy only: Italian Pricelist updated

### Fixed Bugs

- Minor fixes on products database

Thanks to everyone who reported at [software.tools@it.abb.com](mailto:software.tools@it.abb.com).

## Release 1.8.0 – 21/01/2019

### What's new

- Italy only: new Italian Pricelist

Thanks to everyone who reported at [software.tools@it.abb.com](mailto:software.tools@it.abb.com).

## Release 1.7.13 – 23/07/2018

### What's new

- Italy only: Italian Pricelist updated (ENTRELEC products removed)

Thanks to everyone who reported at [software.tools@it.abb.com](mailto:software.tools@it.abb.com).

---

## Release 1.7.12 – 01/06/2018

### What's new

- Italy only: new Italian Pricelist (06.2018)

Thanks to everyone who reported at [software.tools@it.abb.com](mailto:software.tools@it.abb.com).

---

## Release 1.7.10 – 31/01/2018

### Fixed Bugs

- Installation status not refreshed while installing/updating tools
- Minor fixes on products database

Thanks to everyone who reported at [software.tools@it.abb.com](mailto:software.tools@it.abb.com).

---

## Release 1.7.9 – 12/01/2018

### What's new

- Italy only: new Italian Pricelist (01.2018)

### Fixed Bugs

- Fixed wrong DIN occupation in CAT
- Minor fixes on products database

Thanks to everyone who reported at [software.tools@it.abb.com](mailto:software.tools@it.abb.com).

---

## Release 1.7.7 – 30/10/2017

### What's new

- Italy only: new Italian Pricelist

### Fixed Bugs

- Minor fixes on products database

Thanks to everyone who reported at [software.tools@it.abb.com](mailto:software.tools@it.abb.com).

---

## Release 1.7.5 – 03/07/2017

### What's new

- Nigeria only: SpEp is now available in the product selection

### Fixed Bugs

- Various updates to the products properties
- Minor fixes on products database
- Fix on international pricelists

Thanks to everyone who reported at [software.tools@it.abb.com](mailto:software.tools@it.abb.com).

---

## Release 1.6.0 – 04/05/2017

### What's new

- Italy only: new Italian pricelist (01.06.2017)
- Poland only: new Polish pricelist
- Polish translation updated
- Spanish translation updated

### Fixed Bugs

- Minor fixes to product database (din places values missing for a few products)

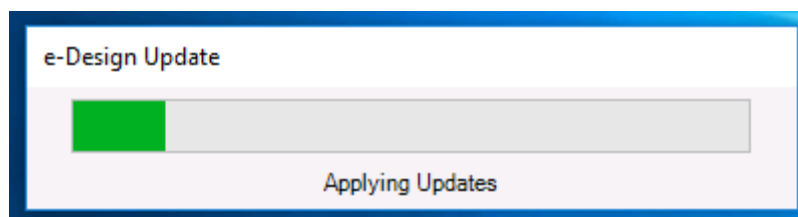
Thanks to everyone who reported at [software.tools@it.abb.com](mailto:software.tools@it.abb.com).

---

## Release 1.5.4 – 21/04/2017

### What's new

- Minor updates in product families selectors:
  - MCB
- The updater tool embedded in e-Design will automatically download and install the latest version of the .NET framework.



- Please note that Windows 10 provides this version of the framework by default.

- For your convenience, you can find [here](#) the .NET 4.6.1 installer.
- More info about .NET framework can be found [here](#).

### Fixed Bugs

- Fixed: Not all the S200 are available in the MCB selector window
- Fixed: Not all the S800 are available in the MCB selector window
- Minor fixes to product database

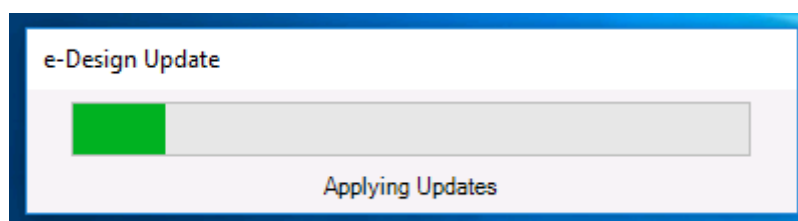
Thanks to everyone who reported at [software.tools@it.abb.com](mailto:software.tools@it.abb.com).

---

## Release 1.5.1 – 07/02/2017

### What's new

- Minor updates in product families selectors:
  - OT160
  - F200
- The updater tool embedded in e-Design will automatically download and install the latest version of the .NET framework.



- Please note that Windows 10 provides this version of the framework by default.
- For your convenience, you can find [here](#) the .NET 4.6.1 installer.
- More info about .NET framework can be found [here](#).

### Fixed Bugs

- Italy only: missing codes from 2017 pricelist are now available

Thanks to everyone who reported at [software.tools@it.abb.com](mailto:software.tools@it.abb.com).

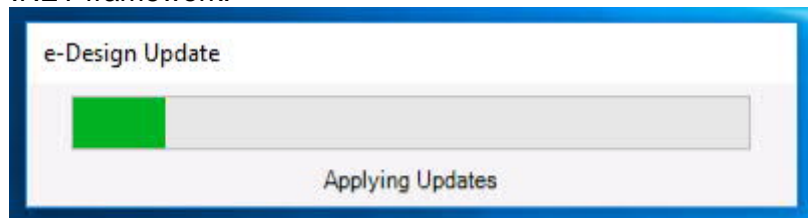
---

## Release 1.5.0 – 12/01/2017

### What's new

- Italy only: [new 2017 pricelist](#) is now available

- The updater tool embedded in e-Design will automatically download and install the latest version of the .NET framework.



- Please note that Windows 10 provides this version of the framework by default.
  - For your convenience, you can find [here](#) the .NET 4.6.1 installer.
  - More info about .NET framework can be found [here](#).
- Minor Updates in product database

### Fixed Bugs

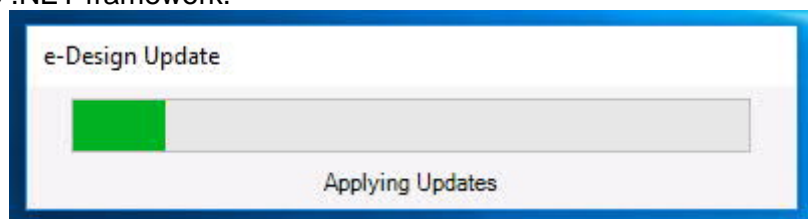
- Minor fixes on Curves launcher
- Minor fixes on e-Design localization

Thanks to everyone who reported at [software.tools@it.abb.com](mailto:software.tools@it.abb.com).

## Release 1.4.4 – 21/11/2016

### What's new

- The updater tool embedded in e-Design will automatically download and install the latest version of the .NET framework.



- Please note that Windows 10 provides this version of the framework by default.
  - For your convenience, you can find [here](#) the .NET 4.6.1 installer.
  - More info about .NET framework can be found [here](#).
- Italy only: small updates on the Italian pricelist
- New French localization available

### Fixed Bugs

- Minor fixes on products database

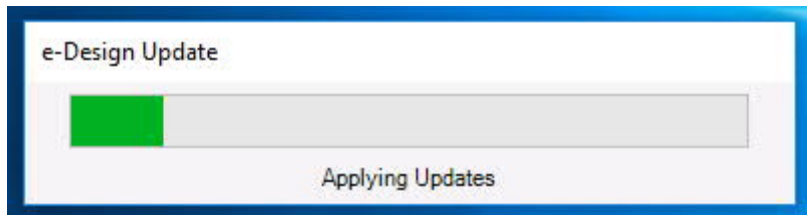
Thanks to everyone who reported at [software.tools@it.abb.com](mailto:software.tools@it.abb.com).

---

## Release 1.4.3 – 06/10/2016

### What's new

- The updater tool embedded in e-Design will automatically download and install the latest version of the .NET framework.



- Please note that Windows 10 provides this version of the framework by default.
  - For your convenience, you can find [here](#) the .NET 4.6.1 installer.
  - More info about .NET framework can be found [here](#).
- Italy only: small updates on the Italian pricelist

### Fixed Bugs

- Minor fixes

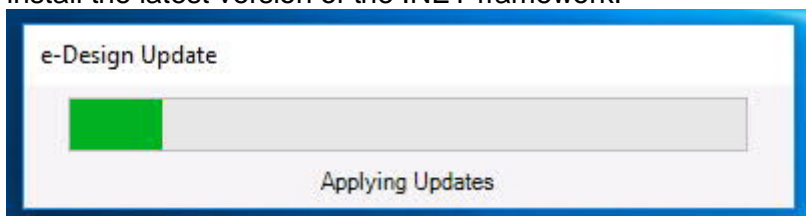
Thanks to everyone who reported at [software.tools@it.abb.com](mailto:software.tools@it.abb.com).

---

## Release 1.4.0 – 05/08/2016

### What's new

- e-Design is now based on .NET 4.6.1 framework: this upgrade will increase the stability and improve the general performances of the suite.
  - If needed, the updater tool embedded in e-Design will automatically download and install the latest version of the .NET framework.



- Please note that Windows 10 provides this version of the framework by default.
  - For your convenience, you can find [here](#) the .NET 4.6.1 installer.
  - More info about .NET framework can be found [here](#).
- Italy only: small updates on the Italian pricelist

### Fixed Bugs

- Minor fixes on products database (properties, localizations)
- Fixes on international pricelists

Thanks to everyone who reported at [software.tools@it.abb.com](mailto:software.tools@it.abb.com).

---

## Release 1.3.3 – 07/06/2016

### Fixed Bugs

- Minor fixes on products database (properties, selection window)
- Fix on international pricelists

Thanks to everyone who reported at [software.tools@it.abb.com](mailto:software.tools@it.abb.com).

---

## Release 1.3.2 – 04/05/2016

### Fixed Bugs

- Various updates to the products properties
- Minor fixes on products database
- Fix on international pricelists

Thanks to everyone who reported at [software.tools@it.abb.com](mailto:software.tools@it.abb.com).

---

## Release 1.3.1 – 08/04/2016

### Fixed Bugs

- String resources updated (BR and RU)
- Fix on missing Italian codes
- Minor fixes on products database

Thanks to everyone who reported at [software.tools@it.abb.com](mailto:software.tools@it.abb.com).

---



---

## Release 1.3.0 – 11/03/2016

### What's New

- Faster experience: e-Design now starts in a few seconds (Both in standard run and in \*.e-Design file double-click)
- New Italian Pricelist (March 2016) – Italy Only

### Fixed Bugs

- String resources updated
- Fix on signup window
- Fix on Switch Disconnectors SD and SHD 200 selector
- Fix on Switch Current Transformer selector
- Minor fixes on products database

Thanks to everyone who reported at [software.tools@it.abb.com](mailto:software.tools@it.abb.com).

---

## Release 1.2.0 – 21/10/2015

### What's New

- For each new update a new button allows to easily read the Release Notes for the upcoming version of the software



CURRENT VERSION	3.1.0.0005
INSTALL. DATE	30/07/2015
UPGRADED VERSION	3.1.2.0003
RELEASE DATE	9/7/2015

Upgrade

Release Notes

- Newest System pro *E Power codes are now available*
- *Updates are now installed silently*

### Fixed Bugs

- Minor fixes on products database
- Minor fixes on accessories database

Thanks to everyone who reported at [software.tools@it.abb.com](mailto:software.tools@it.abb.com).

---

## Release 1.1.1 Build 0001 (2015.09.10)

### Fixed Bugs

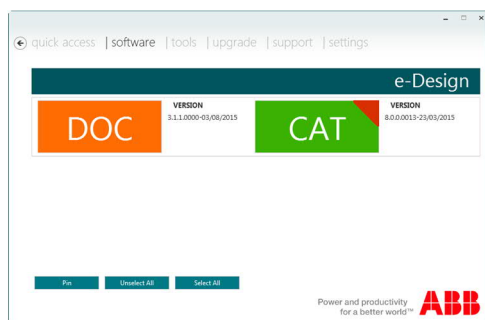
- Fixed incompatibility with SQL Server CE 3.5
- German localization updated

Thanks to everyone who reported at [software.tools@it.abb.com](mailto:software.tools@it.abb.com).

## Release 1.1.0 Build 0012

### What's New

- General improvements to the performance: the suite now is faster in opening (the first run will require a few seconds for the data migration)
- New quick access management: now the behavior refers to the Windows 8/10 start menu.



You can add a Design software to the quick access section by following these steps:

1. Right click on the tile of the desired software
  2. The tile gets a red mark on the top right corner
  3. Click on "pin" to confirm
  4. The selected software are now available in the "quick access" section
- Three new buttons for ABB resources:



Link to e-Design website



Link to ABB Youtube channel



Link to e-Design release notes

- Support section now provides a link to the latest release notes of each software



Opens the release notes of the software

### Fixed Bugs

- Minor fixes on UI

Thanks to everyone who reported at [software.tools@it.abb.com](mailto:software.tools@it.abb.com).

## Release 1.0.1 Build 0045

### What's New

- Added new products for Pro E Power Switchboard (only for selected countries)

### Fixed Bugs

- Fixed minor errors in products selection
- Fixed a bug that prevents DOC from generating the products database
- Minor fixes to products localization
- Minor fixes to custom pricelist generation tool

Thanks to everyone who reported at [software.tools@it.abb.com](mailto:software.tools@it.abb.com).

## Release 1.0.1 Build 0041

### Fixed Bugs

- Fixed network issues
- Fixed StartIndex error
- Minor fixes to products localization

Thanks to everyone who reported at [software.tools@it.abb.com](mailto:software.tools@it.abb.com).

## Release 1.0.1 Build 0038

### What's New

- Country Selection now requires user input
- New products added for the German market

### Fixed Bugs

- Fixed minor network issues
- Minor fixes to product database

- Minor fixes to Italian pricelist
- Import/Export pricelist doesn't work in certain conditions

Thanks to everyone who reported at [software.tools@it.abb.com](mailto:software.tools@it.abb.com).

## Release 1.0.1 Build 0033

### What's New

- Updated Italian pricelist (validity 2015-04-01)
- Added new tab "tools" containing all tools not sharing the file format .e-Design
- Added custom proxy settings into "settings" menu
- Added progress bar when initializing product database
- Tool selector now notifies upgrades and new software (double click on .e-Design file to open the tool selector)
- Tabs "software" and "tools" notify the presence of an upgrade or a brand new software

### Fixed Bugs

- Fixed progress bar visibility when upgrading software
- Minor fixes to product database
- Fixed upgrade all after e-Design restart

Thanks to everyone who reported at [software.tools@it.abb.com](mailto:software.tools@it.abb.com).

## Release 1.0.1 Build 0019

### What's New

- The new build release date is shown instead of the installation one in the 'Programs' panel.
- e-Design platform automatically restart after software installations or updates;
- Various improvement in accessories selection tool database;
- Various improvement in devices selection tool database;
- Accessories selection tool look inherited by operating system;
- Added devices selection tool user manuals available through '?' buttons;
- EasySave on-boarding;
- Minor improvements.

### Fixed Bugs

- Various fixes in accessories selection tool database;
- Various fixes in devices selection tool database;
- Various fixes in generic devices and accessories windows;
- Devices selection tool didn't consider prices for codes coming from accessories selection tool in the 'Available results' section;
- Fixed minor bugs;

Thanks everyone who reported at [software.tools@it.abb.com](mailto:software.tools@it.abb.com).

## Release 1.0.0.0024

### What's New

- Availability System Pro *E* power Form 2a, 3a, 3b, 4b;
- Integrated OTC;
- Integrated Curves;
- Integrated UniSec Pro.
- Minor improvements.

### Fixed Bugs

- Fixed minor bugs;

Thanks everyone who reported at [software.tools@it.abb.com](mailto:software.tools@it.abb.com).

---

## Release 1.0.0.0018

### What's New

- Availability System Pro *E* power Form 2b;
- Accessoring selection tool, Tmax XT availability:
  - Terminal covers;
  - Connectors management for Plug-In version.

### Fixed Bugs

- e-Design Main User interface:

- Restored command 'Upgrade All';
  - Products Selection Tool:
    - 'Search by' Order Code sometimes gives no results;
    - More than one technical parameters can be selected from the same selection list;
    - 'Modify configuration' command add wrong accessories to the configuration;
    - Restored sorting order for In values;
    - 'Modify configuration' command doesn't keep the original quantity;
    - Fixed wrong Poles values;
    - Restored sorting order for Poles values;
    - Fixed wrong discount families for certain product groups.
- 

## Release 1.0.0.0006

### Fixed Bugs

- Opening a project file by double click doesn't succeed due to spaces into the storing path;
  - "Find" function return the same result several times;
  - Improved default values in selection masks;
  - Fixed mistakes in T7 products configurations;
  - Products selection mask opens entire window;
  - "Modify" function misses product accessories;
  - DIN values sometimes are not returned by product selection.
-