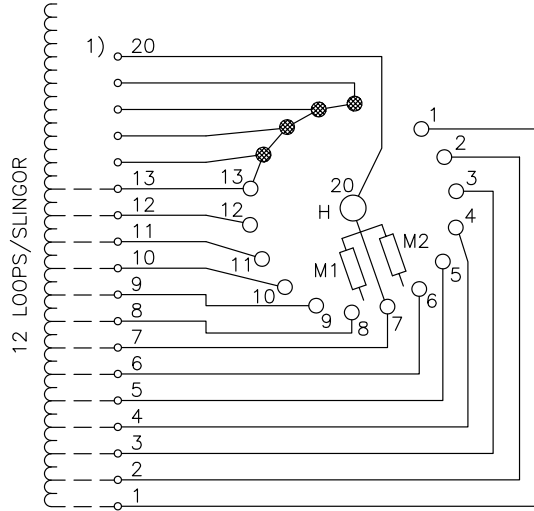


We reserve all rights in this document and in the information contained therein. Reproduction, use or disclosure to third parties without express authority is strictly forbidden.
© ABB 19

Pos. Läge	H connects H förbinder
1	1 - 20
2	2 - 20
3	3 - 20
4	4 - 20
5	5 - 20
6	6 - 20
7	7 - 20
8	8 - 20
9	9 - 20
10	10 - 20
11	11 - 20
12	12 - 20
13	13 - 20

On-load tap-changer type UZEL., UZFL., 13 tap positions, linear switching.
Max. effective No. of turns in pos. 1.
The tap-changer is delivered set in pos. 7.

Lindningskopplare typ UZEL., UZFL., 13 lägen, linjär koppling.
Max. antal effektiva varv i läge 1.
Lindningskopplaren levereras inställd i läge 7.



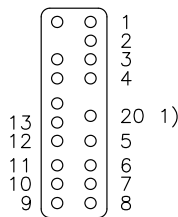
The tap-changer is shown in pos. 7
Lindningskopplaren visad i läge 7

H Main contact M1, M2 Transition contacts
Huvudkontakt Motståndskontakter

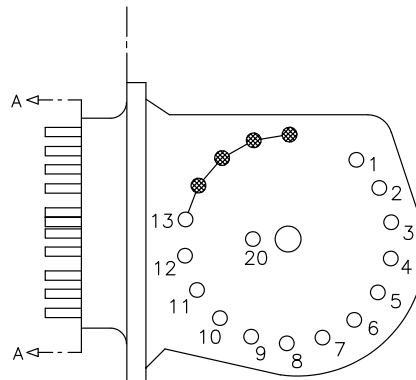
1) Connections between the terminals 20 of the three phases are included in the star-point type.

Förbindningar mellan uttag 20 i de tre faserna ingår i nollpunktsutförandet.

Terminal board
Plint



Section A-A
Sektion A-A



Transformer tank Tap-changer tank
Transformatorlåda Lindningskopplarlåda

Drawn by Form No.	Sheet	Year		Week	Cont
	Dept	Year		Week	
	RevInd	Accepted by qual control		Accepted for prod by	
	RevInd	Accepted by qual control		Accepted for prod by	
Design checked by	Design checked by	Design checked by	Drawn by	Description (English)	
	Drawing checked by	Drawing checked by	Issued by Dept	Year	Week
			Asea Brown Boveri		5492 0393-9
				Lang	Sheet
				RevInd	Cont