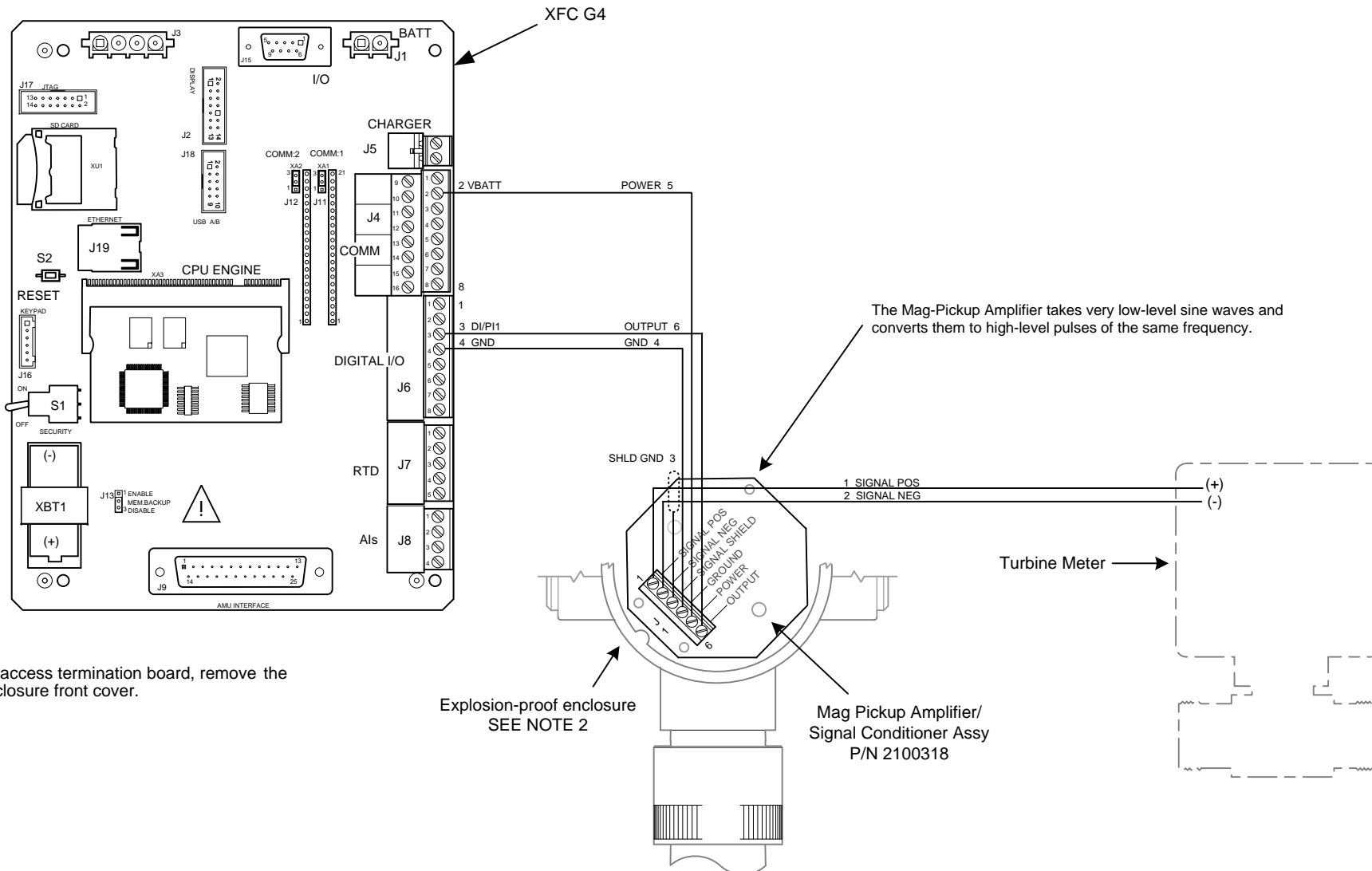


NOTES:

- WARNING:** This drawing does not illustrate the installation methods required for hazardous locations. Prior to any installation in a Classified Hazardous Location, verify installation methods by the Control Drawing referenced on the product's name tag and national and local codes.



- To access termination board, remove the enclosure front cover.

Explosion-proof enclosure
SEE NOTE 2

Mag Pickup Amplifier/
Signal Conditioner Assy
P/N 2100318

Turbine Meter

REF: 2100524-WI

ABB	TOTALFLOW	ACTION	DOC TYPE	TITLE	DWG NO.	REV	SHEET
	Products	D30164	UD	XFC ^{G4} (2103328) BOARD TO MAG PICKUP AMPLIFIER	2104130	AB	1 OF 1