

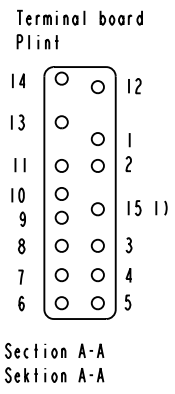
We reserve all rights in this document and in the information contained therein. Reproduction, use or disclosure to third parties without express authority is strictly forbidden. © ABB 19

Pos. Läge	R connects förbinder	H connects förbinder	
1	13-14	2-15	
2		3-15	
3		4-15	
4A		5-15	
4		6-15	
5		7-15	
6A		8-15	
6		9-15	
7A	12-14	10-15	
7		11-15	
8		13-15	
8A			1-15
9			2-15
9A			3-15
10			4-15
11			5-15
12	6-15		
12A	7-15		
13	8-15		
14	9-15		
14A	10-15		
15		10-15	

A position with letter is a through position and gives the same voltage as the normal position.

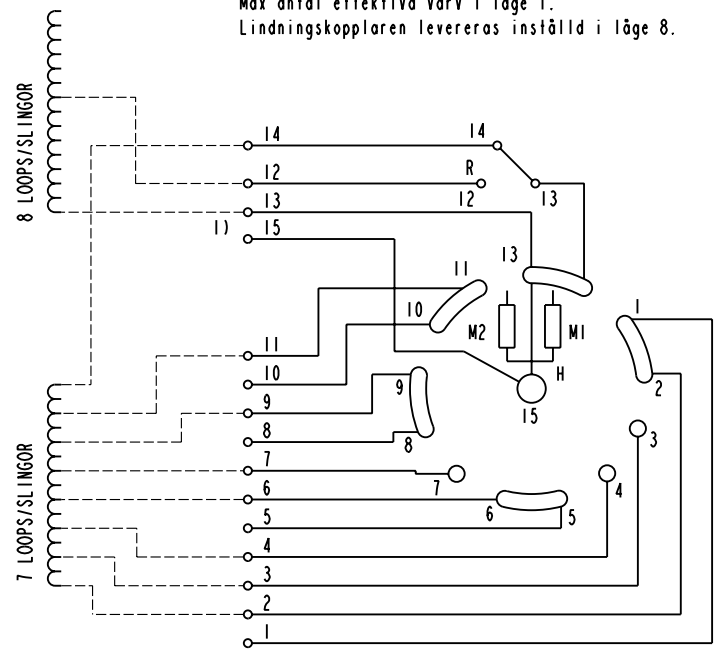
Läge med bokstav är ett genomloppsläge och ger samma spänning som normalläget.

1) Connections between the terminals 15 of the three phases are included in the star-point type.
Förbindningar mellan uttag 15 i de tre faserna ingår i nollpunktsutförandet.



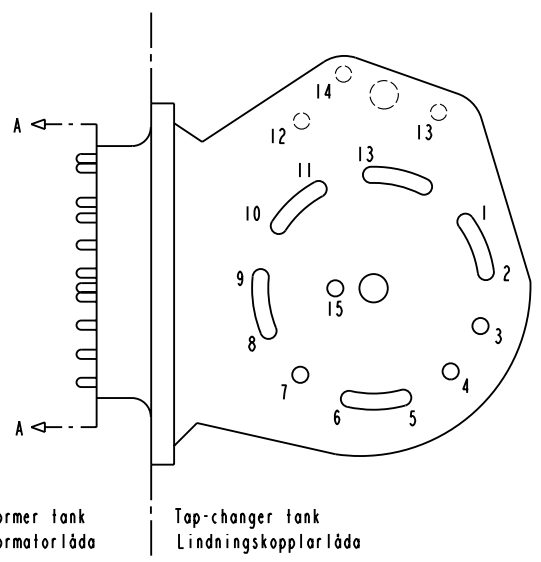
On-load tap-changer type UZED., UZFD., 15 tap positions, coarse/fine switching.
Max effective No. of turns in pos. 1.
The tap-changer is delivered set in pos. 8.

Lindningskopplare typ UZED., UZFD., 15 lägen, grov/fin-koppling.
Max antal effektiva varv i läge 1.
Lindningskopplaren levereras inställd i läge 8.



The tap-changer is shown in pos. 8
Lindningskopplaren visad i läge 8

- R Change-over selector
Grov/fin-omkopplare
- H Main contact
Huvudkontakt
- M1, M2 Transition contacts
Motståndskontakter



Sheet	Cont
Year	Week
Dept	
Rev In	Revision
Appd	Year Week
Accepted by	Accepted for prod by
Design checked by	Drawn by
Issued by	Dept Year Week

Rev In	Revision	Appd	Year	Week	Description (English)	DATA ORIGINAL
					CONNECTION DIAGRAM	
Accepted by	Accepted for prod by				Description (own language)	File name
R. Yngvesson					KOPPLINGSSCHEMA	0395-2
Design checked by	Drawn by					Lang
B-O. Stenestam	L. Bergman					Sheet
Design checked by	Issued by	Dept	Year	Week		Rev In
M. Hedlund	COM/TKO		97	33		Cont
Asea Brown Boveri						

5492 0395-2