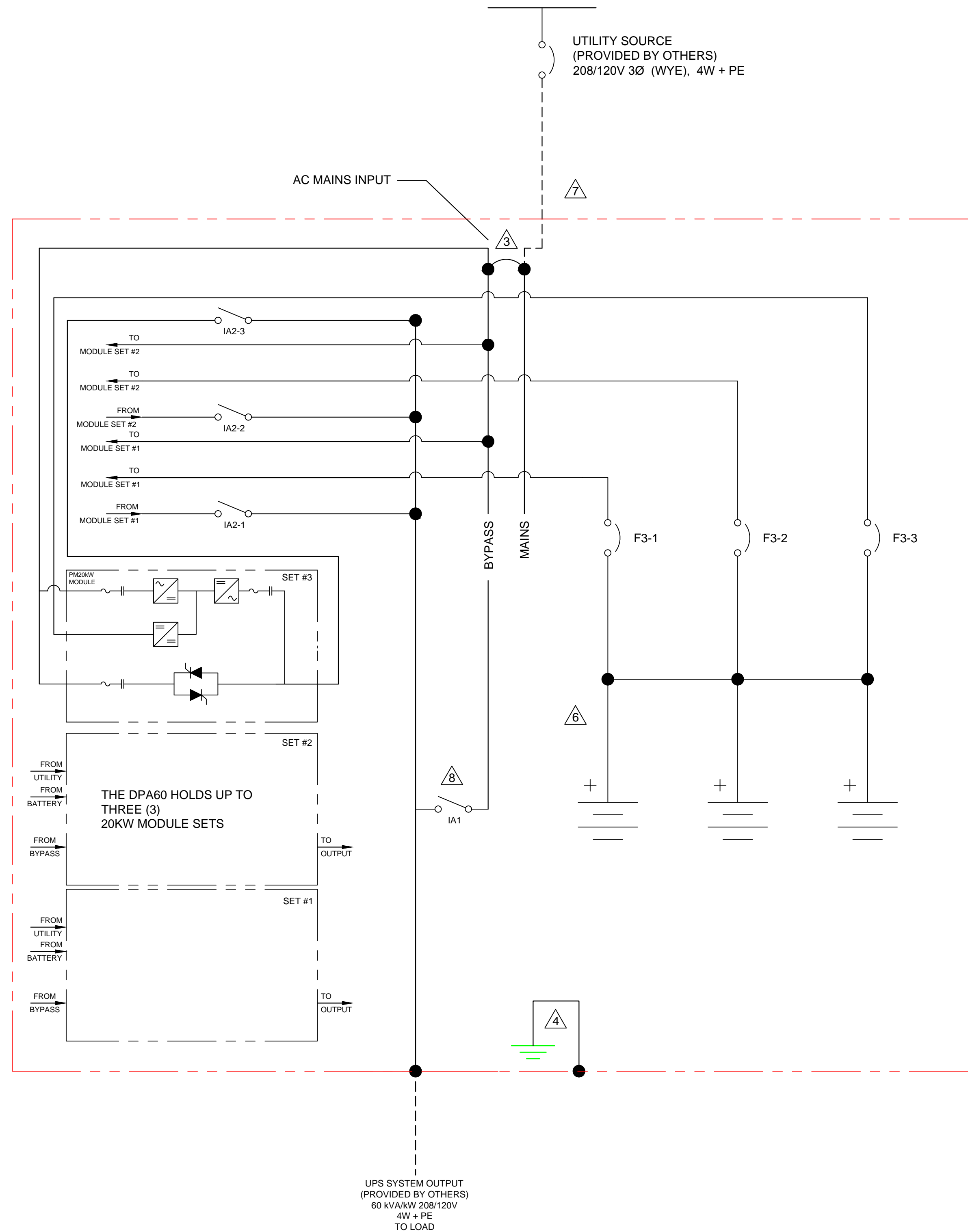


We reserve all rights in this document and in the information contained therein. Reproduction, use or disclosure to third parties without express authority is strictly forbidden. © Copyright 2014 ABB.



UPS System Ratings

The values below are design ratings per phase. Consult the values below when selecting appropriate upstream AC over current protective devices (OCPD).

| UPS Rating (kW) | DPA Modules | Rectifier AC Input Current (A) | | Battery Current (A) | | Bypass Current (A) | Output Current (A) |
|-----------------|-------------|--------------------------------|---------|---------------------|-----------|--------------------|--------------------|
| | | Nominal | Maximum | Nominal | Max [EOC] | | |
| 20 | 1 | 60 | 61 | 59 | 70 | 59 | 56 |
| 40 | 2 | 120 | 121 | 119 | 139 | 118 | 111 |
| 60 | 3 | 180 | 182 | 178 | 209 | 177 | 167 |

OCPD Recommendations

The values below are design ratings per phase. Consult the values below when selecting appropriate upstream AC over current protective devices (OCPD).

| UPS Rating (kW) | Rectifier AC Input | DC Input | Bypass AC Input & AC Output | Maintenance Bypass AC Input |
|-----------------|------------------------|------------------------|-----------------------------|-----------------------------|
| | 80% Rated / 100% Rated | 80% Rated / 100% Rated | 80% Rated / 100% Rated | 80% Rated / 100% Rated |
| 20 | 100A / 75A | 125A / 90A | 100A / 75A | 100A / 75A |
| 40 | 200A / 150A | 225A / 175A | 200A / 150A | 200A / 150A |
| 60 | 300A / 225A | 350A / 275A | 300A / 225A | 300A / 225A |

Device Rating

| Device | Rating | Type | Make | Model |
|-----------|--------------|-----------|------|----------|
| IA2-1,2,3 | 80A, 600V | 3P SWITCH | ABB | OT80F3 |
| IA1 | 400A, 600V | 3P SWITCH | ABB | OT400U03 |
| F3 | 125A, 500VDC | 3P MCCB | ABB | XT2 |

- NOTES:**
- INSTALLATION SHALL COMPLY WITH ALL APPLICABLE NATIONAL, STATE AND LOCAL CODES.
 - REFER TO PRODUCT DOCUMENTATION FOR ADDITIONAL DETAILS PRIOR TO INSTALLATION AND SITE PREPARATION WORK.
 - UPS IS CONFIGURED AS SINGLE INPUT FEED (STANDARD). OPTIONAL DUAL INPUT FEED IS AVAILABLE BY REMOVING BUS BAR OR CABLE JUMPERS BETWEEN RECTIFIER MAINS AND BYPASS INPUT TERMINALS. CONSULT FACTORY AND USER MANUAL FOR DUAL FEED CONFIGURATION.
 - AVAILABLE AS 4-WIRE CONFIGURATION (STANDARD). CONSULT FACTORY FOR 3-WIRE CONFIGURATIONS.
 - CONNECT RECTIFIER AND BYPASS INPUT CABLES IN CLOCKWISE PHASE ROTATION.
 - UPS CABINET IS PROVIDED WITH INTERNAL BATTERIES ONLY. BATTERIES ARE CONFIGURED IN SIX (6) STRINGS, CONNECTED IN PARALLEL FOR CAPACITY.
 - AC CABLING (PROVIDED BY OTHERS) SHALL BE 600V RATED, 4W + PE.
 - OPTIONAL INTERNAL MAINTENANCE BYPASS SWITCH (IA1) IS NOT INCLUDED IN THE DEFAULT UPS CONFIGURATION, AND IS AVAILABLE UPON REQUEST.

| Legend | | | |
|--------|---------------------|--------|----------------------|
| Symbol | Description | Symbol | Description |
| | SWITCH DISCONNECTOR | | Rectifier (AC/DC) |
| | CIRCUIT BREAKER | | Converter (DC/DC) |
| | FUSE | | Inverter (DC/AC) |
| | CONTACTOR | | Static Bypass Switch |
| | GROUND | | Battery |
| | POWER CABLE | | |

| Rev. | CBUN# | Resp. | Description | Date |
|------|-------|-------|-----------------|------------|
| A0 | - | JRH | INITIAL RELEASE | 09-24-2019 |

| Prepared | Document Kind | Title | Units | Sheet Size |
|------------------|----------------|--|--------------|-----------------------|
| J. Resendiz | OneLineDiagram | DP A60 UL 208V SYSTEM ONLINE | Inch | D |
| T. Kendzia | Reference | SINGLE INPUT FEED - INTERNAL BATTERIES | Scale | N:N |
| --- | | Item ID 94-9100-00068595 | Item Rev. A0 | Date Drawn 09/24/2019 |
| Power Protection | | Document ID ONE-00089673 | Doc. Rev. A0 | Page 1 OF 1 |

