

FRONT VIEW  
(DOOR REMOVED)

MOUNTING PAN FOR  
BREAKER, TERMINAL  
BLOCKS, AND  
GROUND LUG.

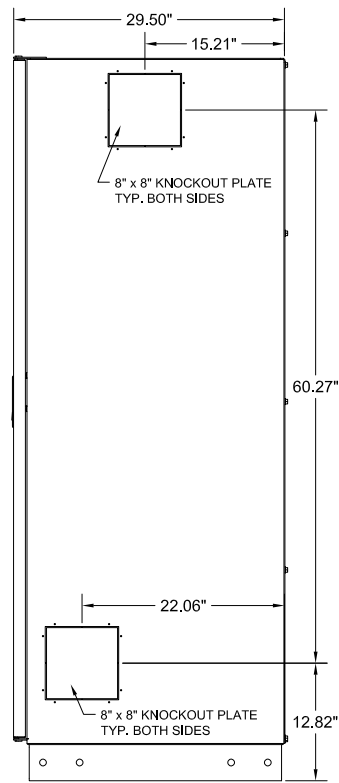
CLEARANCE BETWEEN TOP  
RAIL AND MOUNTING PAN  
13.56"

RAILS TURNED DOWN IN REAR OF CABINET  
TO FACILITATE BATTERY CHANGES  
ALLOWING BATTERIES TO SLIDE OUT

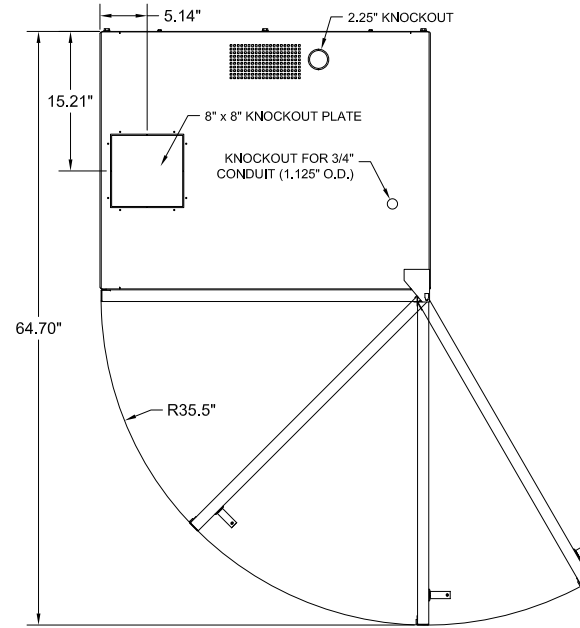
RAILS TURNED UP IN FRONT OF CABINET  
TO ALLOW ADDED SPACE FOR INCREASED  
SAFETY DURING BATTERY MAINTENANCE

2" HIGH O.D. BATTERY SUPPORT RAILS

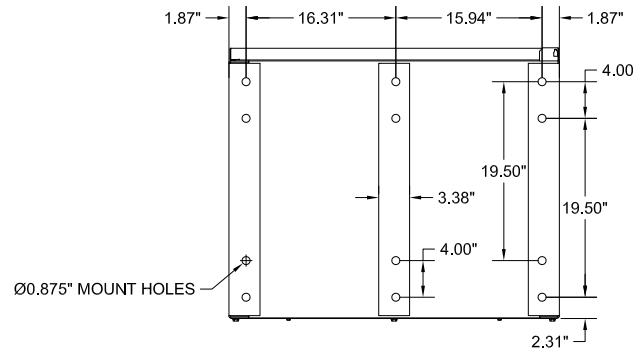
14.25" TYPICAL CLEARANCE BETWEEN  
RAILS AT CABINET FRONT



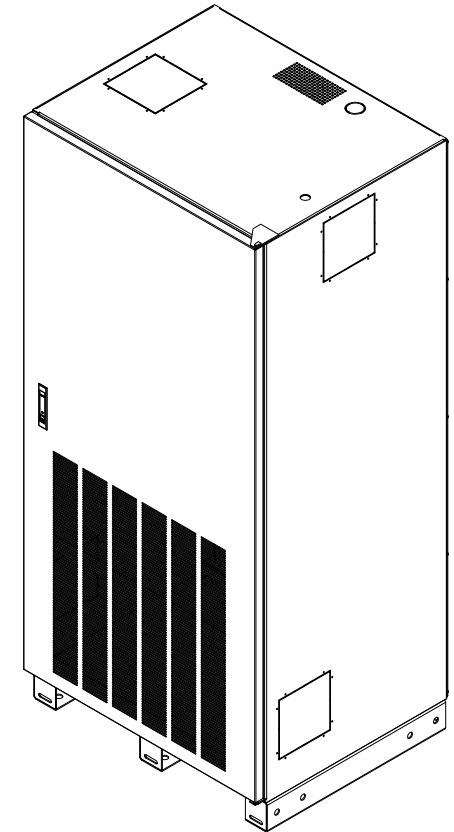
RIGHT SIDE VIEW



TOP VIEW  
(WITH DOOR SWING)



BOTTOM VIEW



**NOTES:**

EMPTY CABINET WEIGHT: 488 LBS

1. NEMA 1 ENCLOSED BATTERY CABINET.
2. FACTORY ASSEMBLED CABINETS ARE LISTED TO UL 1778.
3. HEAVY GAUGE WELDED STEEL CONSTRUCTION.
4. A MINIMUM REAR CLEARANCE OF 2" IS RECOMMENDED FOR OPTIMAL COOLING OF THE EQUIPMENT.
5. FINISH IS BLACK DURABLE CHIP AND CORROSION RESISTANT POWDER COAT.
6. FOR EASE OF CONDUIT INSTALLATION, (1) 8" X 8" CONDUIT PLATE IS PROVIDED TO REPLACE A KNOCKOUT IN THE CABINET.
7. BATTERIES CAN BE ACCESSED FROM THE FRONT AND REAR.
8. CABINET CAN BE MOVED WITH PALLET JACK OR FORK LIFT AT PALLET JACK ACCESS POINTS LOCATED AT FRONT OR REAR OF CABINET. FROM THE SIDES, THE CABINET CAN BE MOVED WITH ROL-A-LIFT TYPE EQUIPMENT MOVER. THE CABINET IS ONLY TO BE LIFTED FROM THE BOTTOM.
9. THE BC43S BATTERY CABINET (OPTIONAL CONFIGURATION) IS CERTIFIED TO THE INTERNATIONAL BUILDING CODE (IBC) AND THE CALIFORNIA BUILDING CODE (CBC) TO MEET SEISMIC DESIGN CATEGORY F, SS = 2.0 AND IMPORTANCE FACTOR 1.5.

**BC43 BATTERY CABINET FOR DPA 120 / 240  
MECHANICAL DRAWING**

THE INFORMATION CONTAINED IN THIS DRAWING IS THE SOLE PROPERTY OF C&C POWER, INC. ANY REPRODUCTION WITHOUT THE WRITTEN CONSENT OF C&C POWER, INC IS PROHIBITED.

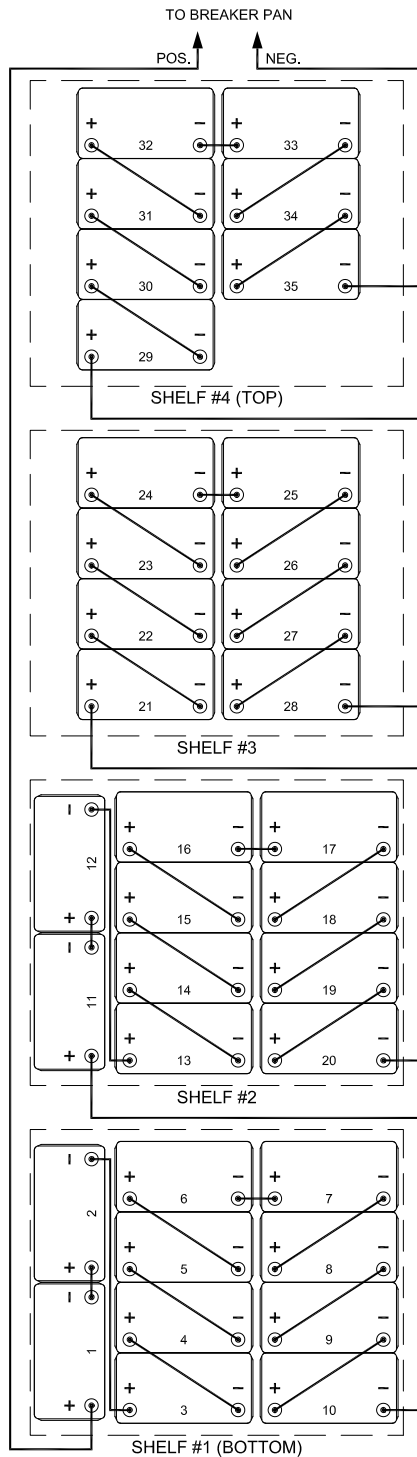
DIMENSIONS ARE IN INCHES		INITIALS	DATE
TOLERANCES:			
DECIMALS:	ANGLES:	DRAWN	JRL
.XX ±.13	±1°	CHECKED	CH
.XXX ±.082			12/07/2021

SCALE: SEE A REV: 4 SHEET 1 OF 2



Electrification Product Group  
EP Industrial Solutions Division  
Manufactured by C&C Power for ABB

©2021 C&C POWER, INC. ALL RIGHTS RESERVED



420 VDC TYPICAL WIRING

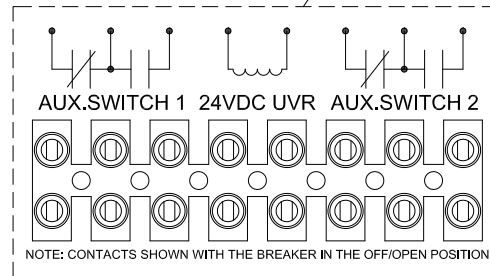
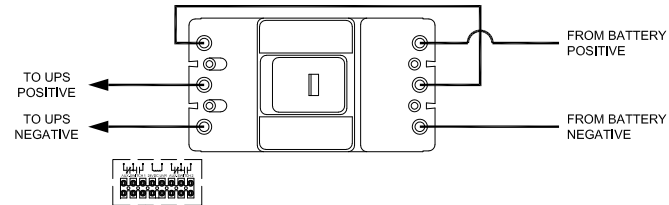
**NOTES:**

1. ALL INTERNAL WIRING IS UL LISTED, MTW, STYLE, 105C, EXTRA FLEXIBLE CABLE.
2. BREAKER IS UL LISTED.
3. CABINETS WITH BREAKERS ARE SHIPPED WITH BREAKER IN THE OFF/OPEN POSITION.
4. CABINETS ARE SHIPPED WITH BATTERY JUMPER REMOVED TO BREAK STRING VOLTAGE FOR ADDED SAFETY IN SHIPPING.
5. THE TERMINAL BLOCKS ARE UL RECOGNIZED, 600V RATED.
6. CABLES FROM BATTERY CABINET TO UPS SYSTEM ARE OPTIONAL.
7. GROUND CONNECTION IS #14-1/0 AWG MECHANICAL LUG.

**BATTERY CONFIGURATIONS**

<u>WPC CAPACITY</u>	<u>MAXIMUM NUMBER OF BATTERIES</u>
200 W	35
300 W	35
350 W	35
400 W	35
500 W	35
540 W	35
620 W	35

**BREAKER WIRING**



**BC43 BATTERY CABINET FOR DPA 120 / 240  
ELECTRICAL DRAWING**

THE INFORMATION CONTAINED IN THIS DRAWING IS THE SOLE PROPERTY OF C&C POWER, INC. ANY REPRODUCTION WITHOUT THE WRITTEN CONSENT OF C&C POWER, INC IS PROHIBITED.

DIMENSIONS ARE IN INCHES		INITIALS	DATE
TOLERANCES:		DRAWN	JRL
DECIMALS: .XX ±.13	ANGLES: ±1°	CHECKED	CH
.XXX ±.082			12/07/2021



Electrification Product Group  
EP Industrial Solutions Division  
Manufactured by C&C Power for ABB

CIRCUIT BREAKER SUMMARY					
BREAKER TYPE	BREAKER MODEL	TRIP	AIC	WIRE RANGE	
ABB T5	T5N400TW	400A	16K @ 600VDC	(2) 2/0 - 300 MCM	