

## Type ACT-983

### Indoor/outdoor current transformer

#### Application

The ACT-983 indoor/outdoor auxiliary current transformer is a 600 volt rated unit for use in secondary circuits. The unit can be provided with 10 kV BIL for use in primary circuits. This dry-type, solid-cast current transformer operates with high accuracy for metering or relay applications. The unit is best suited for use in changing the effective current ratio for operating watt-hour meters, relays, and other control and metering devices needing revenue metering accuracy. Due to superior saturation characteristics, these transformers generally do not saturate under extreme high fault currents.

#### Mechanical description

The core and coil assembly is wound and encapsulated in a molded cast resin. The secondary terminals are 1/4"-20 copper studs with associated hardware. An optional removable terminal box with two (2) 1" NPT conduit hubs can be provided for outdoor use.

#### Accuracy performance

The ACT-983 will operate with 0.3 class accuracy for metering with burdens of B-0.1 up to B-1.8 and up to C800 for ratio correction and circuit isolation applications. The transformer is accurate through its rating factor, and can be used continuously to this level.

#### Mounting

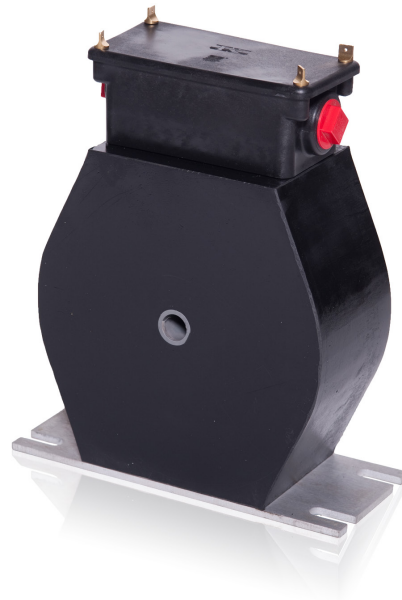
The ACT is designed for mounting in an upright, underhung, or cantilever position. Mounting slots are provided on the aluminum base.

#### Testing

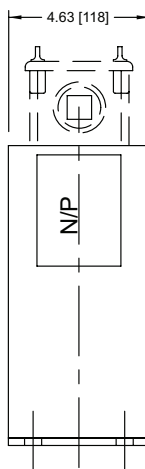
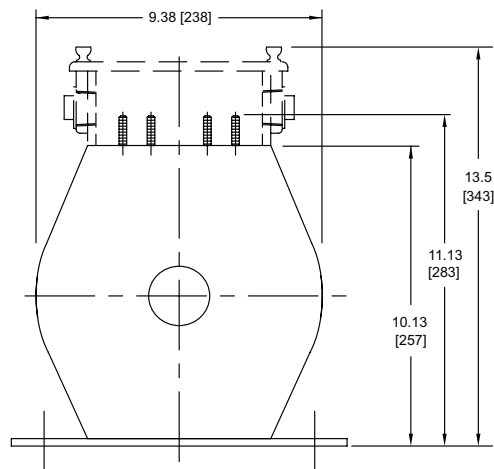
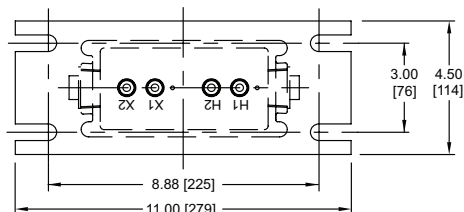
This unit can be tested to all applicable IEEE, CSA, or IEC standards as requested.

#### Options

The ACT is available in virtually any combination of ratio and accuracy with a rating factor of up to 4.0. The unit can be provided for use in primary circuits with 4 kV isolation. Contact factory for other needs.

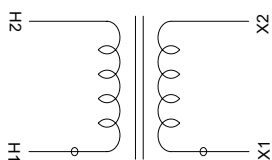


## Unit dimensions



### Type ACT-983

Note: Metric dimensions are displayed in [mm]



### Wiring diagram

### Electrical specifications:

- Isolation: 2.5 kV @ 60 Hz for use in secondary circuits.  
Also available as wound primary with 4 kV isolation.
- Core/coil designed for low leakage reactance.

### Ordering information:

When ordering ACT Auxiliary CTs, specify the following:

- Current ratio (primary:secondary, i.e. 5:3.33)
- Type of circuit (i.e., primary or secondary)
- Accuracy and burden requirements, for example:  
Metering: (0.3B-0.1 through B-1.8)  
Relaying: (C100, C200, C400, or C800 or other)  
If IEC ratings, list class and burden (e.g. class 0.2-20 VA, 5P20-40VA)
- Continuous rating factor (standard is RF=1.5)
- Frequency (standard is 60 Hz)
- Optional: Conduit box hub size (standard is 1" NPT)

For more information please contact:

### ABB Inc.

### Medium Voltage Distribution Components

3022 NC 43 North

Pinetops, NC 27864

USA

Phone: +1 252 827 3212

Fax: +1 252 827 4286

[www.abb.com/mediumvoltage](http://www.abb.com/mediumvoltage)

### Note:

The information contained in this document is for general information purposes only. While ABB strives to keep the information up to date and correct, it makes no representations or warranties of any kind, express or implied, about the completeness, accuracy, reliability, suitability, or availability with respect to the information, products, services, or related graphics contained in the document for any purpose. Any reliance placed on such information is therefore strictly at your own risk. ABB reserves the right to discontinue any product or service at any time.

Copyright 2012 ABB.

All rights reserved.