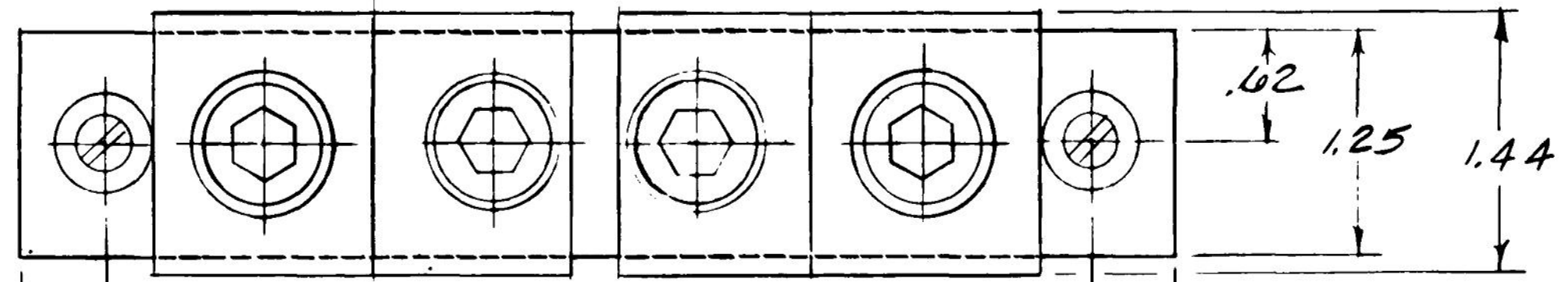


14

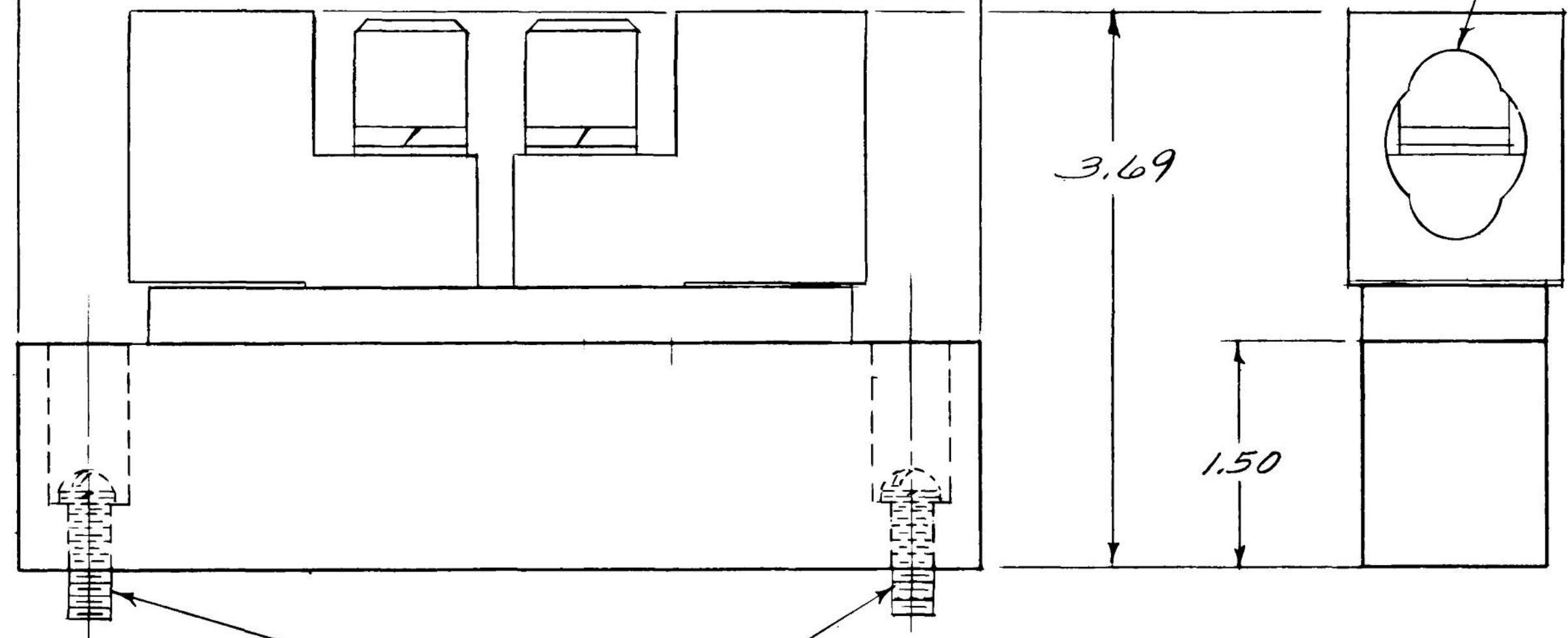
13

12

11



WIRE SIZE: (2) 1/0-250MCM CU-AL
(1) 4-600MCM CU-AL



MOUNTING HARDWARE
(2) #12-24 X .75 LG SCREWS
(2) #12 LOCK WASHERS
(2) #12 FLAT WASHERS



OUTLINE NEUTRAL
 FIRST MADE FOR TNIA400 MOD 8

THIRD ANGLE	SHEET#	DWG NO.	DATE	REV
	1 of 1	139C5481SH1	05-Feb-23	E

14

13

12

11

D

D

C

C

B

B

A

A