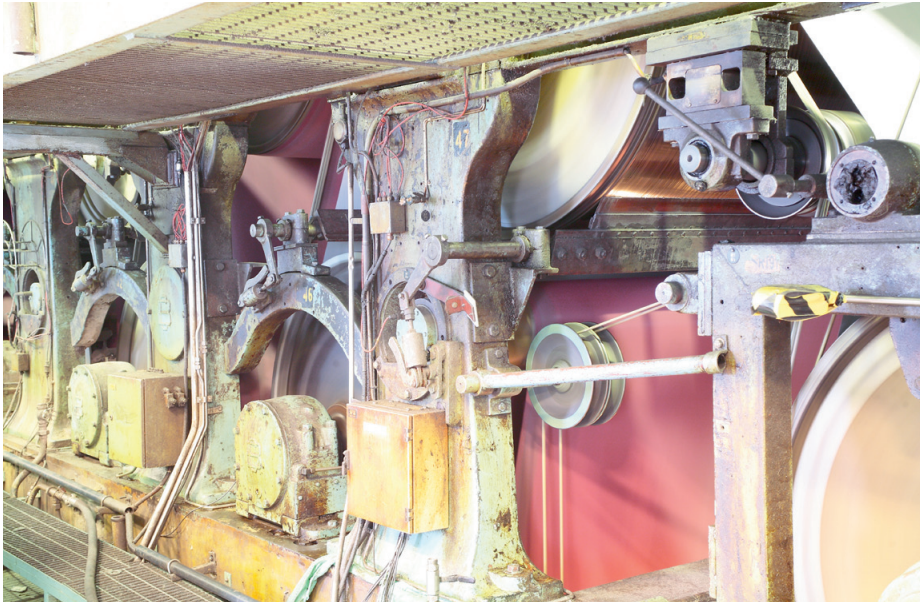


## Fiskeby Board in Norrköping, Sweden has successfully installed Pressductor PillowBlock load cells in their machines for manufacturing of packaging boards

Fiskeby Board's machines for manufacturing of packaging boards are running with Pressductor PillowBlock load cells providing an accurate web tension measurement



Fiskeby Board is one of Europe's leading manufacturers of packaging boards. The product is MULTIBOARD, a complete range of packaging boards made from first class recycled fibre and adapted to customer needs. Fiskeby counts among their most notable customers Europe's largest food manufacturers and other leading Swedish and international companies.

MULTIBOARD comprises of five different basic grades: MULTIBOARD Offset, MULTIBOARD kraft, MULTIBOARD EcoFrost, MULTIBOARD EcoKraft and MULTIBOARD Barrier. Together they provide a complete range of packaging boards that fill the need for competitive solutions in most industries, including the food industry.

All grades in this family of products feature MULTIBOARD's multi-ply construction which, in its various combinations, provides widely differing characteristics and advantages.

All MULTIBOARD grades meet high technical, economic and environmental requirements, both general and specific, in their different areas of application.

(For more information, visit [www.fiskeby.com](http://www.fiskeby.com))

### What has been achieved?

We ask Mr. Ulf Halvarsson, Electrical Supervisor and Mr. Tobias Dunhagen, Automation Engineer, who concordantly express their opinion about the ABB Pressductor load cell installations:

"The new PFEA tension electronics is a big step forward in comparison to the old version. The PFEA electronics is also really easy to operate.

The Pressductor PillowBlock load cells have been running very well, even in the dryer wire section with temperatures up to 90°C. In the wire section we have single side measurement. In order to prevent wire breaks it is very important with ABB's reliable wire tension measurement.

In general, the robust ABB load cells are working really well in this severe production environment with high humidity and big differences in temperatures. Pressductor PillowBlock load cells stand for reliable and stable measurement."

"The new PFEA tension electronics is a big step forward in comparison to the old version. The PFEA electronics is also really easy to operate"

## Supplied equipment

ABB Force Measurement has supplied Fiskeby Board AB, Norrköping, Sweden with around 30 Pressductor PillowBlock load cells and PFEA tension electronics.

Facts on Fiskeby Board AB, Norrköping, Sweden	
Site	336,000 m <sup>2</sup>
Capacity	170,000 t/year
Turnover	75 million Euros
Export	70%
Workforce	310
Products, brands	Cartonboard, weight: 230 - 500 g/m <sup>2</sup> MULTIBOARD Offset MULTIBOARD Kraft MULTIBOARD EcoFrost MULTIBOARD EcoKraft MULTIBOARD Barrier
ABB load cells installed in Fiskeby's machines for manufacturing of packaging boards	Pressductor PillowBlock Load Cells, model PFTL 101A/101B are the most common load cells installed



## Contact us

### ABB AB

Force Measurement

S-721 59 Västerås, Sweden

Phone: +46 21 32 50 00

Fax: +46 21 34 00 05

Internet: [www.abb.com/pressductor](http://www.abb.com/pressductor)