

We reserve all rights in this document and in the information contained therein. Reproduction, use or disclosure to third parties without express authority is strictly forbidden. © Copyright 2014 ABB

NOTES:

A2 1) INSTALLATION SHALL COMPLY WITH ALL APPLICABLE NATIONAL, STATE, AND LOCAL CODES.

A2 2) REFER TO PRODUCT DOCUMENTATION FOR ADDITIONAL DETAILS PRIOR TO SITE PREPARATION OR INSTALLATION.

3) UNIT DIMENSIONS:

MAIN TRANSFORMER CABINET (W x D x H):

42.0 in. x 36.0 in. x 78.0 in.
[1067 mm x 914 mm x 1981 mm]

24" [610 mm] SIDE CAR (W x D x H):

24.0 in. x 36.0 in. x 78.0 in.
[610 mm x 914 mm x 1981 mm]

4) UNIT WEIGHT:

MAIN TRANSFORMER CABINET: 2650 lbs. [1202 kg]
24" [610 mm] SIDE CAR: 350 lbs. [159 kg]
COMBINED: 3000 lbs. [1361 kg]

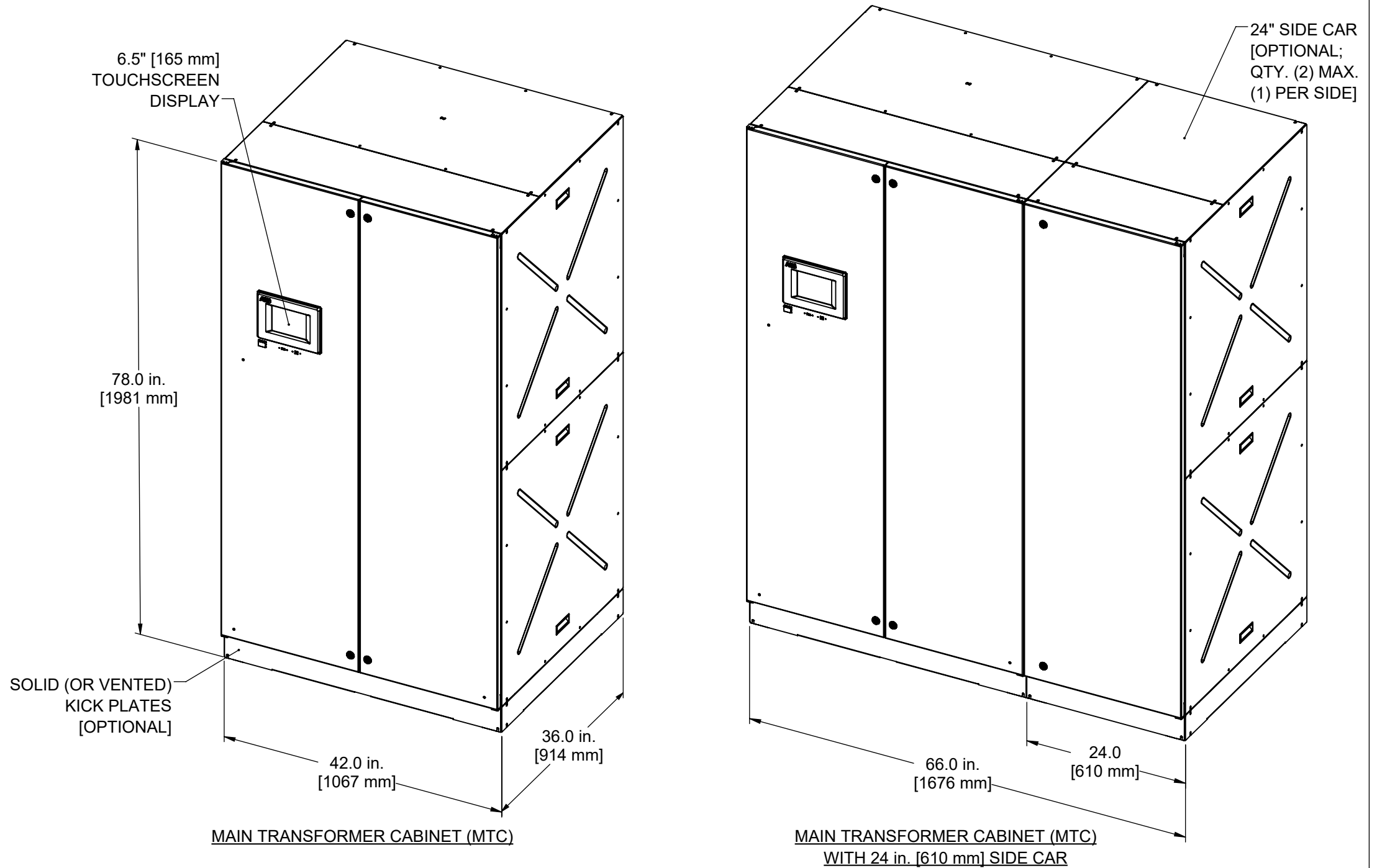
5) SHEET CONTENTS:

- SHEET 1: OVERALL DIMENSIONS AND WEIGHTS
- SHEET 2: RECOMMENDED MINIMUM CLEARANCES
MOUNTING FEET LOCATIONS
- SHEET 3: CABLE ENTRY/EXIT INFORMATION
- SHEET 4: MAIN BREAKER AND GROUND
BUSBAR INFORMATION
- SHEET 5: VIEWS OF VARIOUS DISTRIBUTION

6) LISTED WIRE SIZES, RATINGS, AND QUANTITIES ARE RECOMMENDATIONS ONLY. REFER TO LOCAL CODES.

A2 7) SEE SECTION 4.9.2.2 OF INSTALLATION MANUAL FOR SUBFEED BREAKER TERMINAL INFORMATION

8) SYSTEM MUST HAVE ALL PANELS AND DOORS INSTALLED FOR PROPER OPERATION

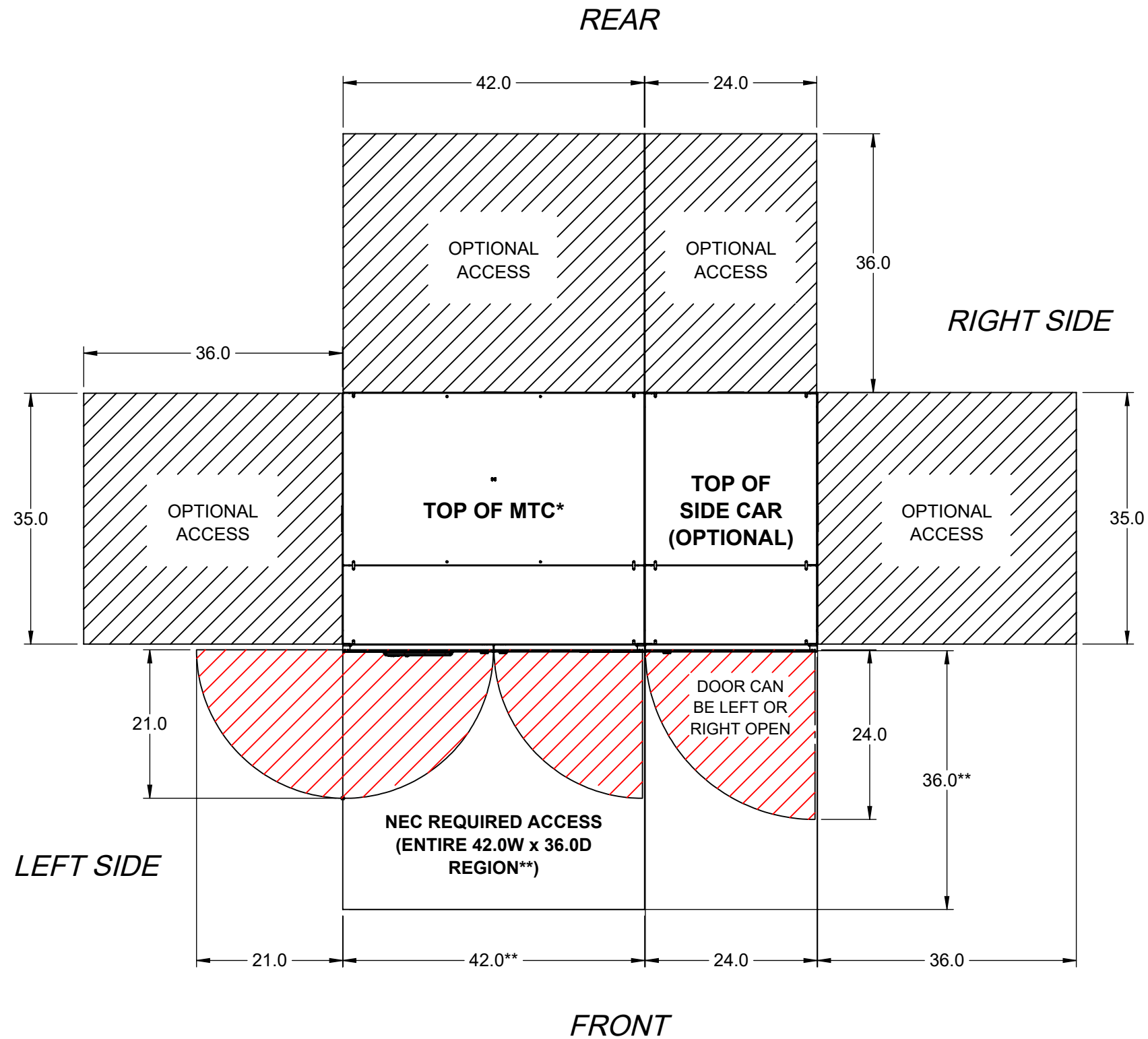


Rev.	ECN#	Resp.	Description	Date
A2	APM 2209	MC	SEE NOTES SECTION; PAGE 1	8/26/2021
A1	--	ZWS	ADDED DOOR SWING DIMENSIONS ON PAGE 2	11/13/2020
A0	--	ZWS	INITIAL RELEASE	10/27/2020

Material N/A	Finish N/A	Prepared Z. W. SMITH	Title DRAWING, OUTLINE, 50 - 300 kVA ABB PDU TRUFIT	Units Inch	Sheet Size B	Scale 1:16	
Tolerances X.XX = ±.03 X.XXX = ±.015	Hole ϕ = ±.005 Angle = ±1/2°	Approved T. Miller	ABB Document Kind Detail Drawing	Item ID 94-9200-00071840	Item Rev. A2	Date Drawn 09/14/2020	Page 1 / 5
Unless Otherwise Specified: Inside bend radius equals one material thickness. Remove all burrs and sharp edges.		Division/Dept. Power Protection		Document ID 94-9200-00071840	Doc. Rev. A2		
Part must comply with company document 94-10-000001. Interpret drawing in accordance with ASME Y14.5-2009.							

We reserve all rights in this document and in the information contained therein. Reproduction, use or disclosure to third parties without express authority is strictly forbidden. © Copyright 2014 ABB

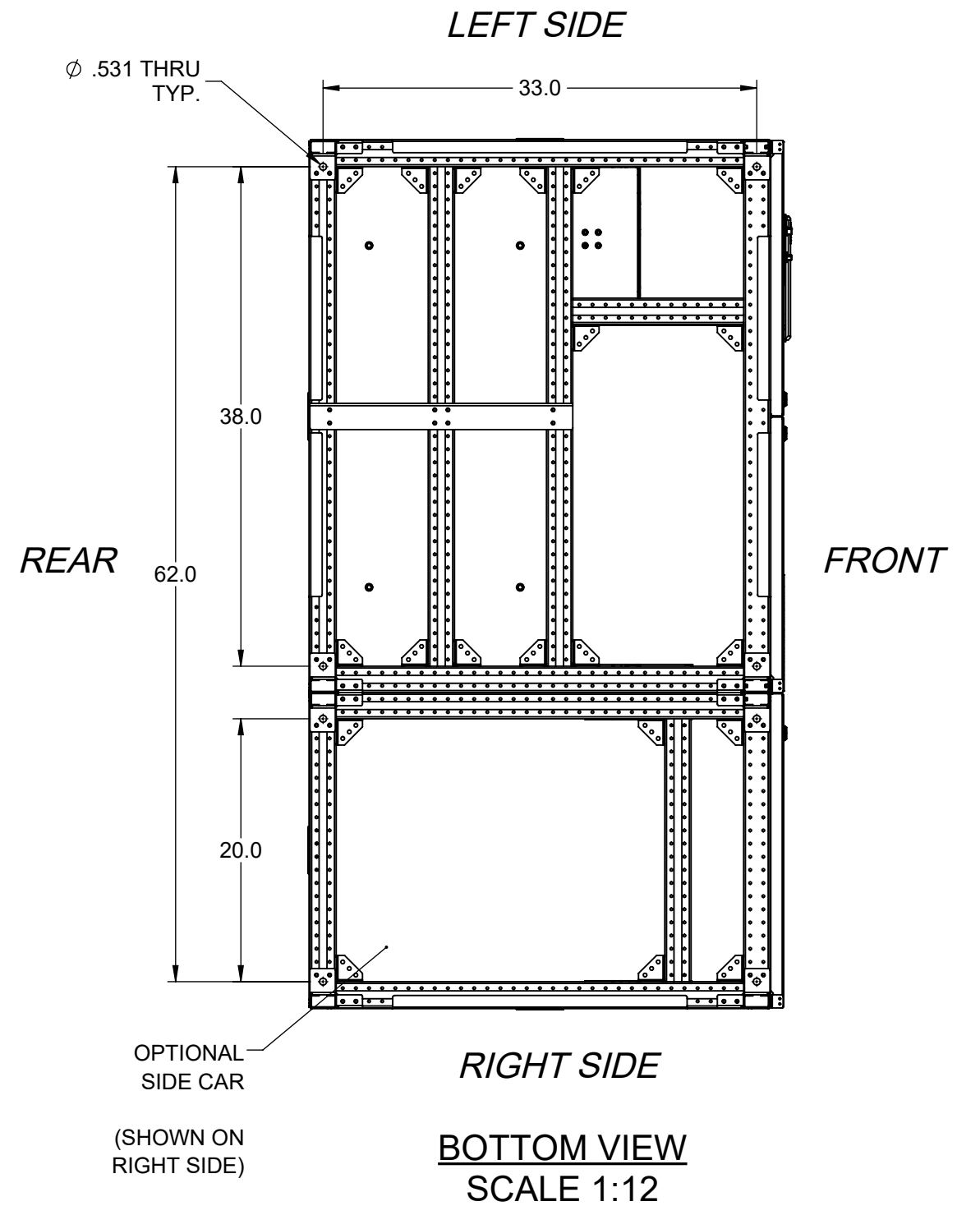
RECOMMENDED MINIMUM CLEARANCES



*NOTE: RECOMMEND
18.0" MIN. GAP BETWEEN
TOP OF UNIT AND CEILING

SCALE 1:18

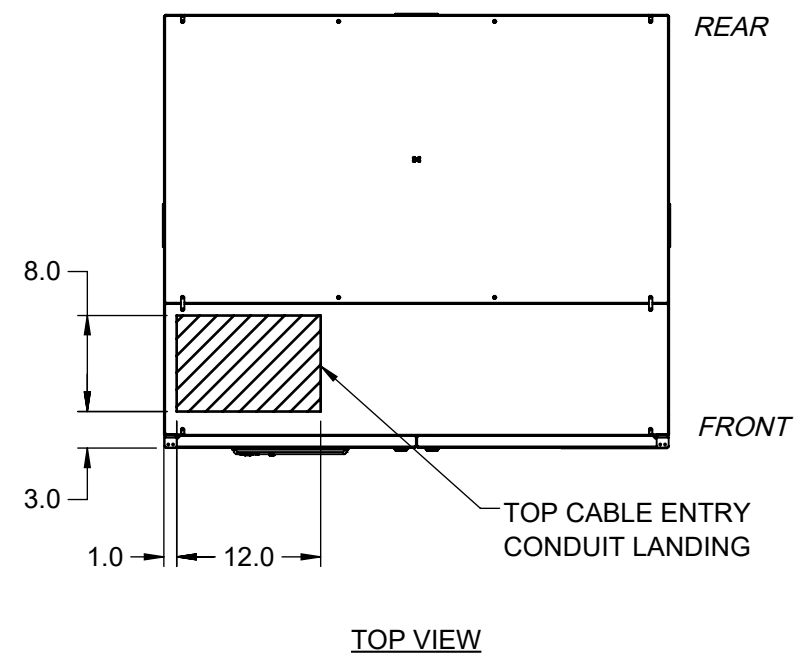
MOUNTING FEET LOCATIONS



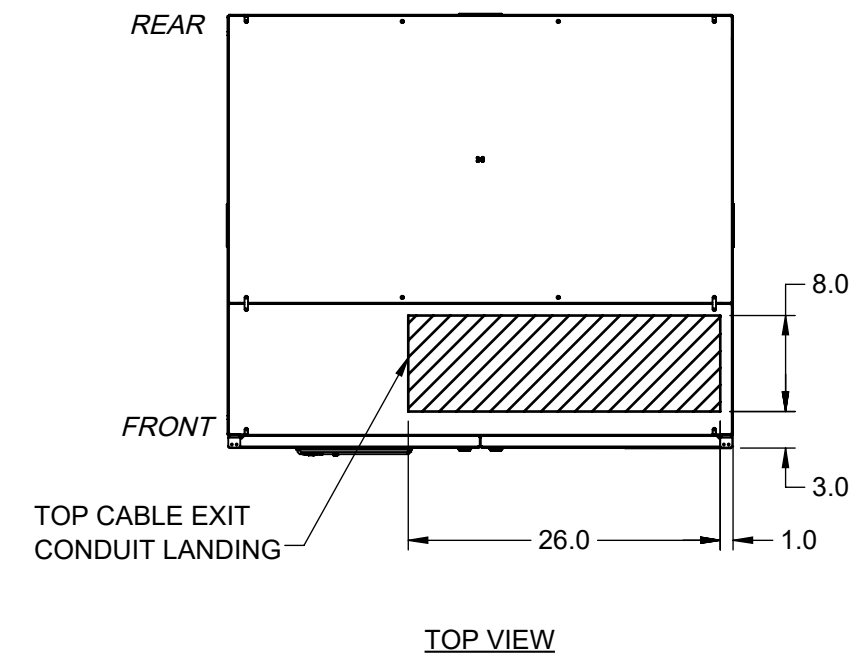
BOTTOM VIEW
SCALE 1:12

We reserve all rights in this document and in the information contained therein. Reproduction, use or disclosure to third parties without express authority is strictly forbidden. © Copyright 2014 ABB

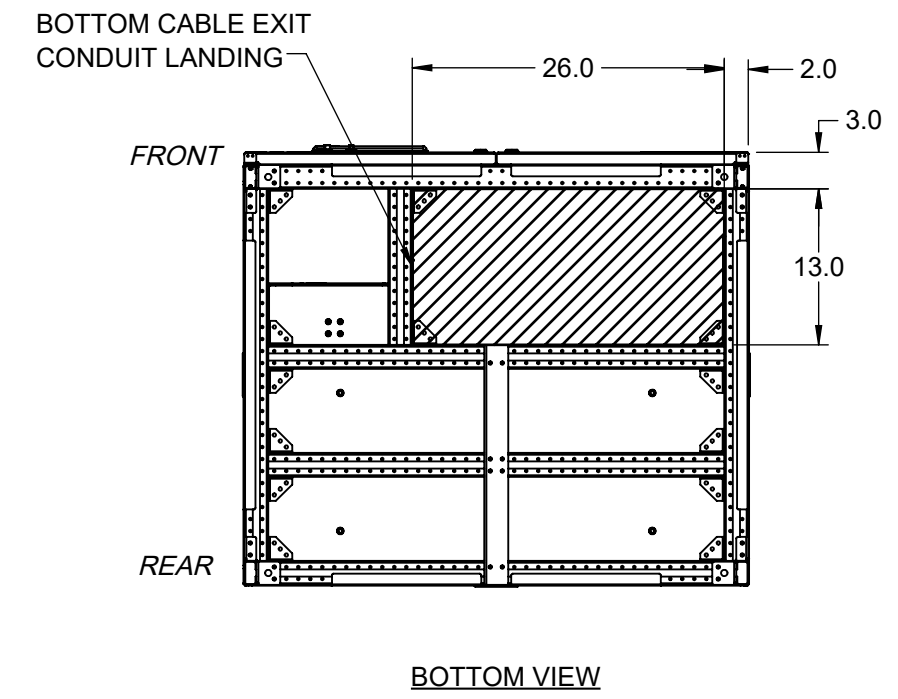
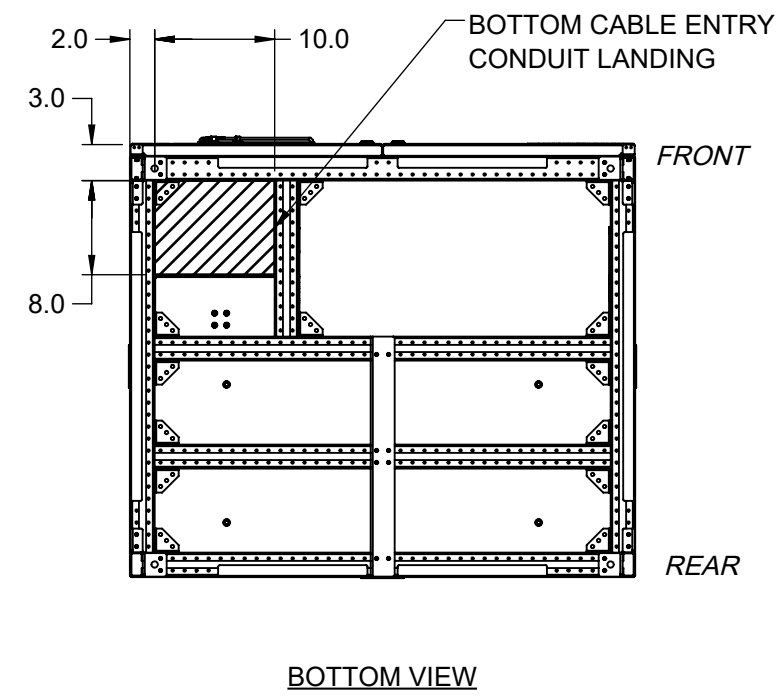
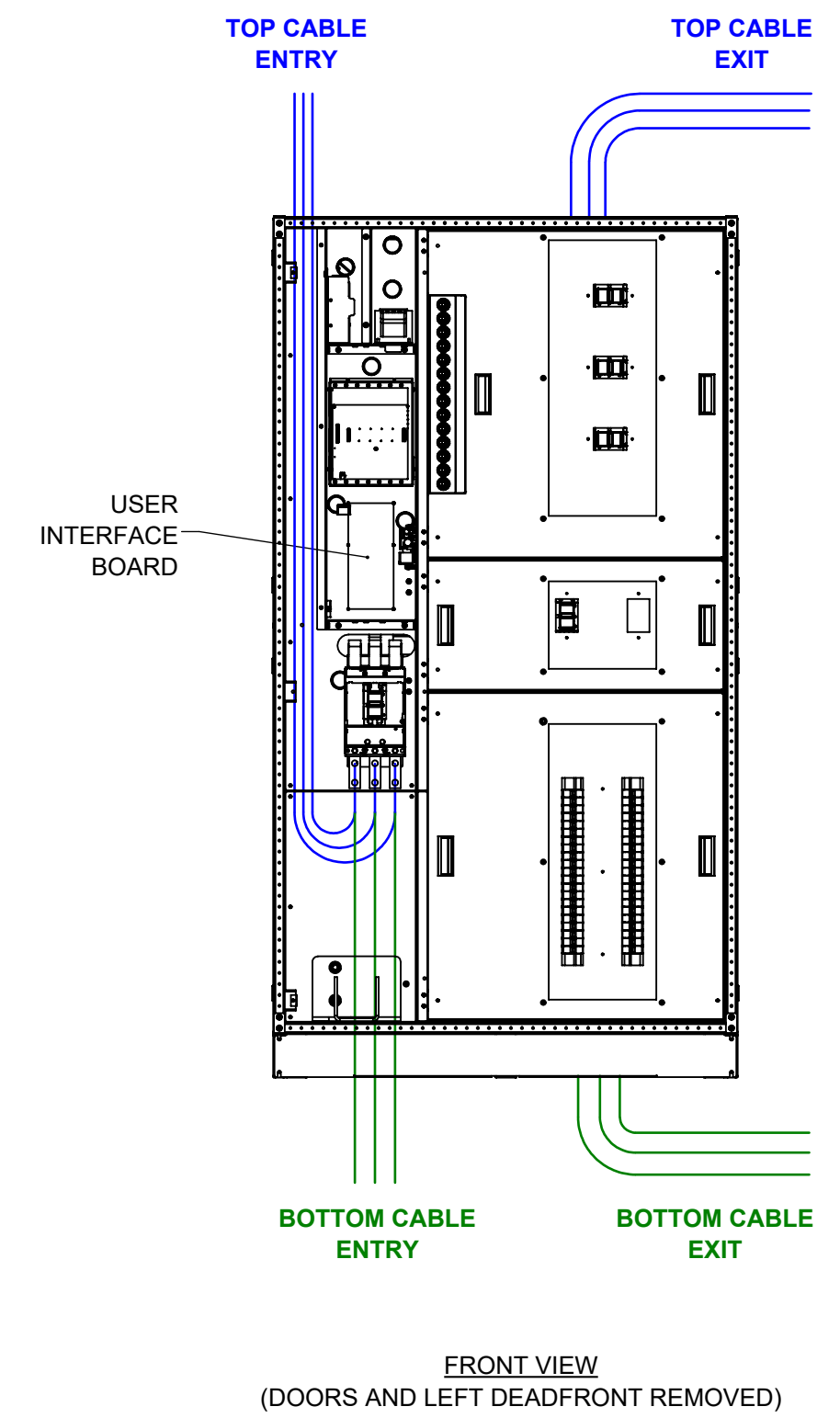
CABLE ENTRY LOCATIONS



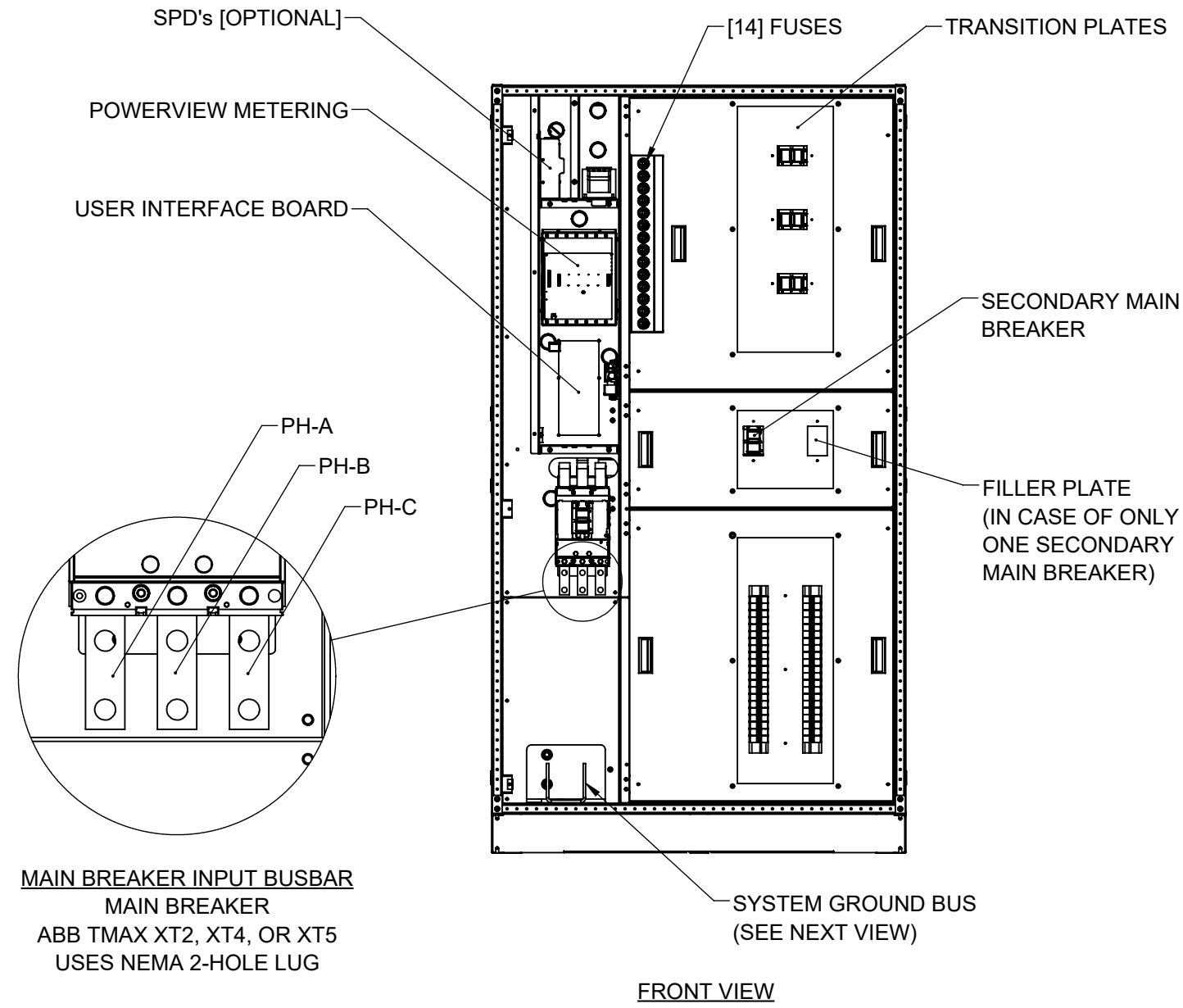
CABLE EXIT LOCATIONS



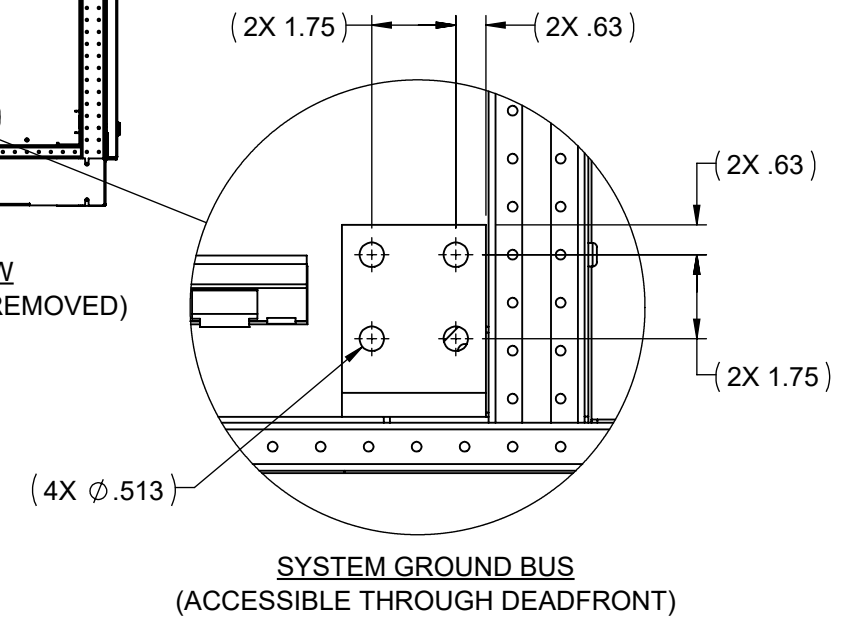
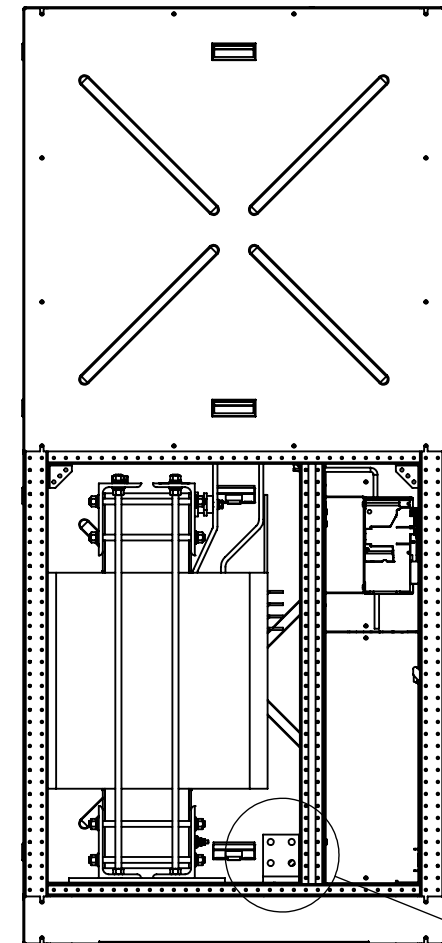
CABLE ENTRY/EXIT PATHS



MAIN BREAKER INPUT AND SYSTEM GROUND BUS DETAIL



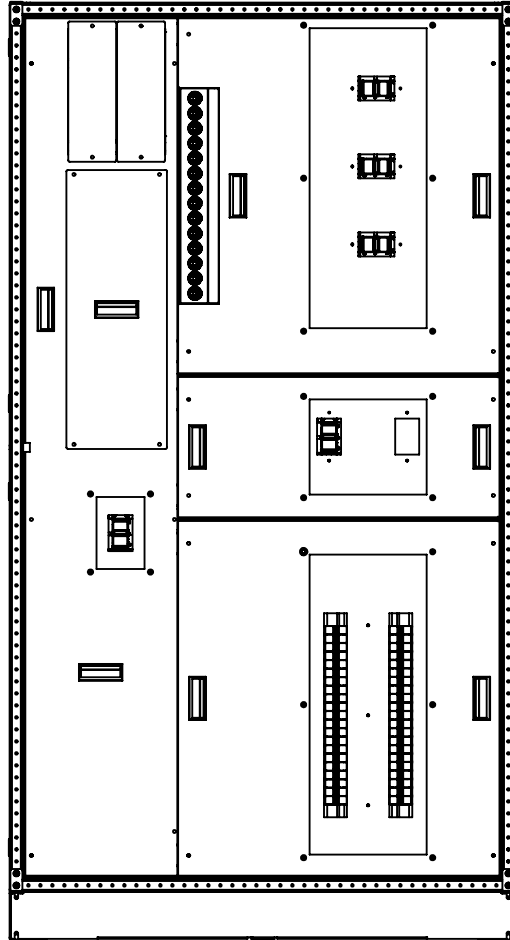
MAIN BREAKER INPUT BUSBAR
 MAIN BREAKER
 ABB TMAX XT2, XT4, OR XT5
 USES NEMA 2-HOLE LUG



We reserve all rights in this document and in the information contained therein. Reproduction, use or disclosure to third parties without express authority is strictly forbidden. © Copyright 2014 ABB

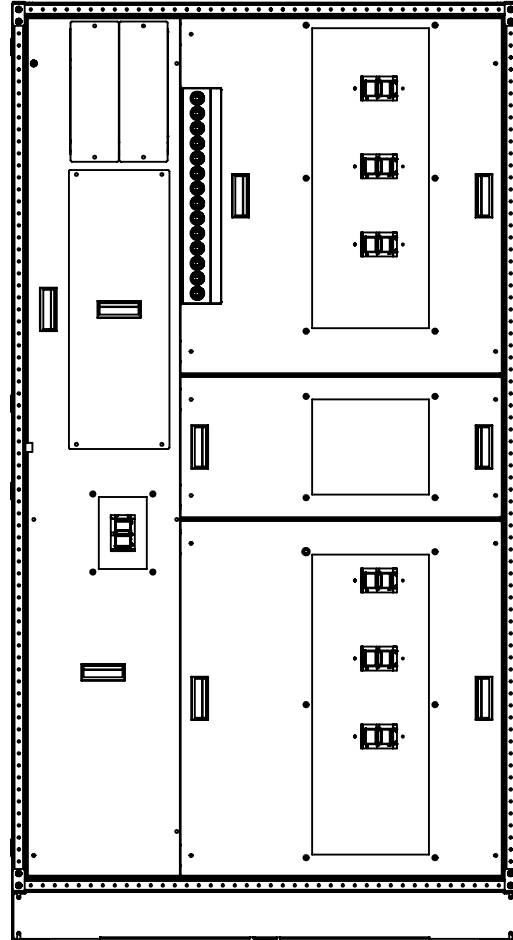
VIEWS OF VARIOUS DISTRIBUTION CONFIGURATIONS

(NOTE: VIEWS SHOWN AS EXAMPLES ONLY. TRUFIT PDU CAN ACCOMODATE MOST COMBINATIONS, TOP AND/OR BOTTOM OF DISTRIBUTION CONFIGURATIONS.)



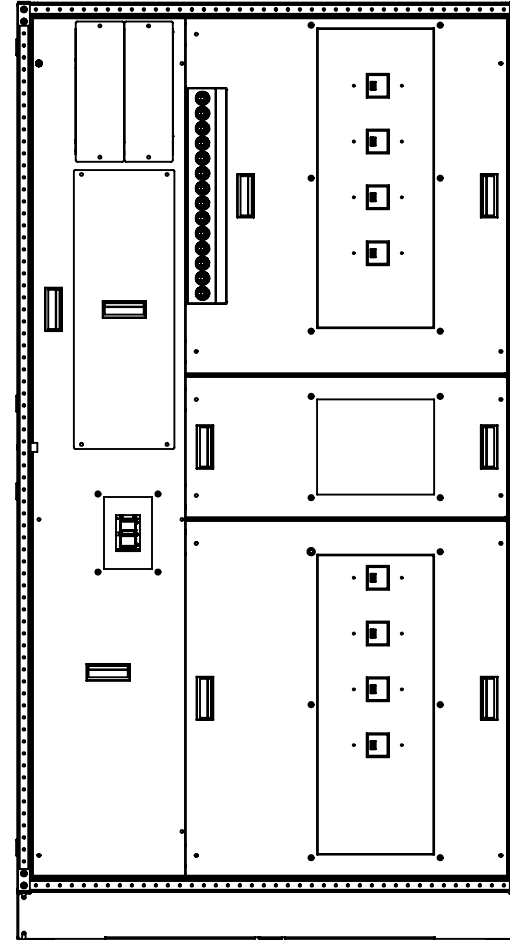
FRONT VIEW

TOP: [3] ABB TMAX XT5 400A SUB-FEED BREAKERS
 BOT: ABB PROLINE 225A OR 400A 42P PANELBOARD



FRONT VIEW

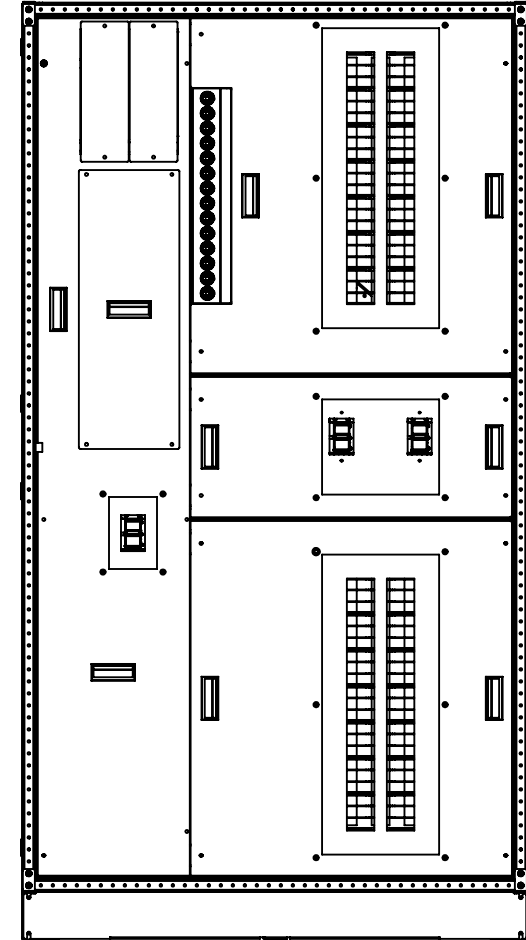
TOP: [3] ABB TMAX XT5 400A SUB-FEED BREAKERS
 BOT: [3] ABB TMAX XT5 400A SUB-FEED BREAKERS



FRONT VIEW

TOP: [4] ABB TMAX XT4 SUB-FEED BREAKERS
 BOT: [4] ABB TMAX XT4 SUB-FEED BREAKERS

(CAN ALSO ACCOMODATE UP TO
 [8] ABB TMAX XT3 SUB-FEED BREAKERS)



FRONT VIEW

TOP: GE 225A OR 400A 42P PANELBOARD
 BOT: GE 225A OR 400A 42P PANELBOARD