

Replacement motor control center buckets

For legacy ITE, Gould and BBC 5600 motor control centers

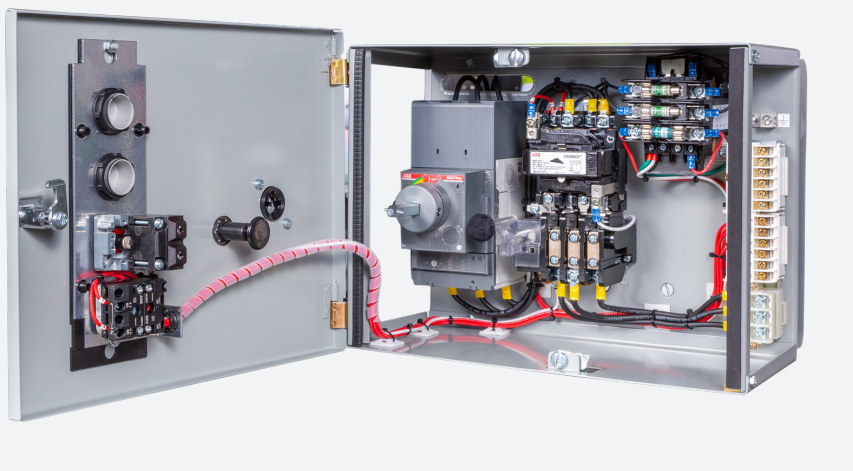


ABB now offers replacement buckets for legacy ITE, Gould and BBC 5600 motor control centers (MCCs). These buckets are based on standard components used in modern MCCs, but they are built to be 100% compatible with the original 5600 sections and bus systems.

01

01 Interior of 5600 size 1 FVNR

02 Front view of 5600 size 1 FVNR

For 5600 systems that have cabinetry and bus systems in good condition, these units can revitalize the entire lineup, significantly extending its usable lifespan.

Replacing original 5600 buckets with new buckets from ABB can help eliminate aging issues such as worn and obsolete components. The new buckets are built with modern components, so spare parts are readily available. Reliability improves and maintenance tasks are simplified.

The door mounts to the frame of the 5600 section and is hinged on its left side.

These units are suitable for commercial and industrial applications. They are also qualified and dedicated for nuclear 1E applications.

Offering

Various unit types, which mimic original system functionality or add more modern features, are available. Designs for individual units may be custom engineered to comply with unique site-specific requirements. The major units available include:

- Feeders up to 1200 A
- Starters, NEMA size 1–6
 - FVNR
 - FVR
 - 2S2W
 - 2S1W
- Soft starters
- Variable speed drives



02

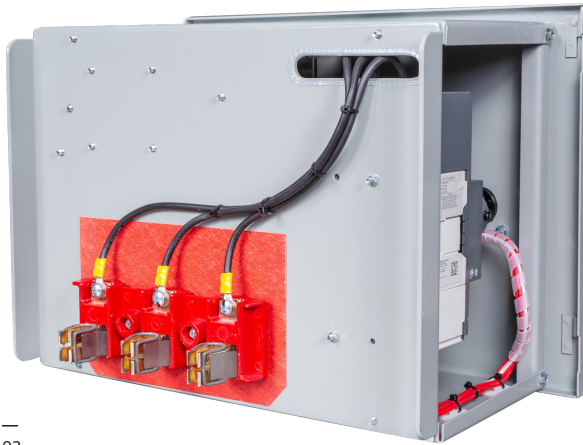
Features

- Plug-in up to NEMA size 4
- Bolt-in for NEMA sizes 5 and 6
- Voltage ratings: 208 V 60 Hz , 240 V 60 Hz, 380 V 50 Hz, 480 V 60 Hz and 600 V 60 Hz
- Interrupting ratings: 65 kA and 100 kA
- 100% new materials, including frame, bus stabs and wiring harness
- Circuit breakers: ABB SACE® Tmax® XT molded case circuit breakers
- Motor starters: ABB 300 series
- Soft starters: ABB PSTX series
- Variable frequency drives: ABB ACS580 or ACS880
- Control devices: ABB A3 (lights, switches and pushbuttons)

Quotations

To obtain a quote, contact your ABB Electrification Service sales team. Quotes for custom-engineered solutions are also available. The following information is required to provide a quotation:

- 1) Original drawings, if available
- 2) Overall lineup photo
- 3) Lineup nameplate photo
- 4) Feeder photos (front closed, front open, rear)
- 5) Starter photos (front closed, front open, rear)



—
03