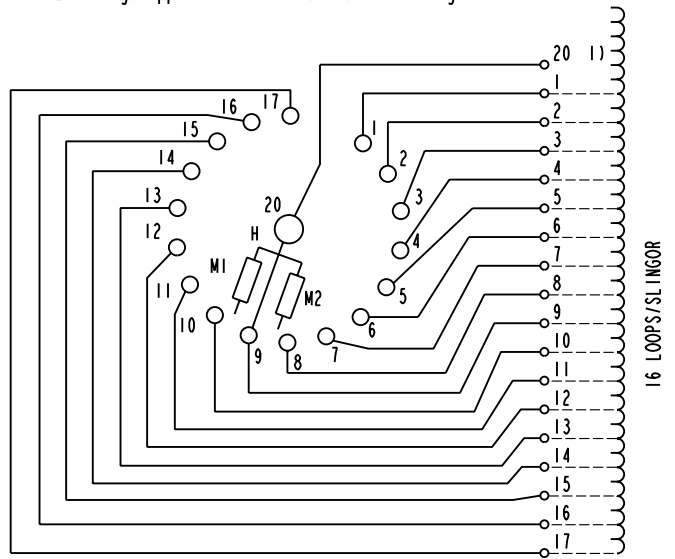


We reserve all rights in this document and in the information contained therein. Reproduction, use or disclosure to third parties without express authority is strictly forbidden. © ABB 19

Pos. Läge	H connects H förbinder
1	1 - 20
2	2 - 20
3	3 - 20
4	4 - 20
5	5 - 20
6	6 - 20
7	7 - 20
8	8 - 20
9	9 - 20
10	10 - 20
11	11 - 20
12	12 - 20
13	13 - 20
14	14 - 20
15	15 - 20
16	16 - 20
17	17 - 20

On-load tap-changer type UZEL., UZFL., 17 tap positions, linear switching.
Min. effective No. of turns in pos. 1.
The tap-changer is delivered set in pos. 9.

Lindningskopplare typ UZEL., UZFL., 17 lägen, linjär koppling.
Min. antal effektiva varv i läge 1.
Lindningskopplaren levereras inställd i läge 9.

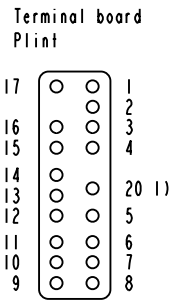


The tap-changer is shown in pos. 9
Lindningskopplaren visad i läge 9

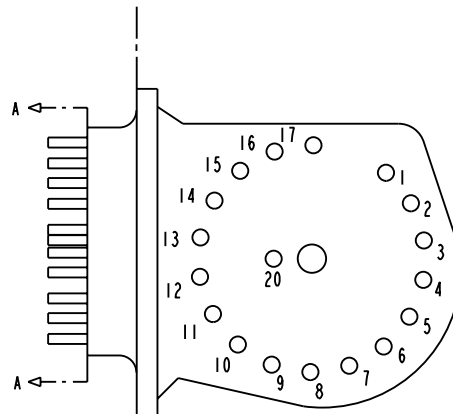
H Main contact M1, M2 Transition contacts
Huvudkontakt Motståndskontakter

1) Connections between the terminals 20 of the three phases are included in the star-point type.

Förbindningar mellan uttag 20 i de tre faserna ingår i nollpunktsutförandet.



Section A-A
Sektion A-A



Transformer tank
Transformatorlåda

Tap-changer tank
Lindningskopplarlåda

Sheet	Cont								
	Year	Week							
Form No.	Dept	Year	Week	Appd	Year	Week			
	Revision								
Design checked by	Accepted by qual control	Accepted for prod by		Description (English)			DATA ORIGINAL		
	R. Yngvesson			CONNECTION DIAGRAM			File name		
	B-O. Stenestam	L. Bergman		KOPPLINGSSHEMA			0396-13		
Design checked by	M. Hedlund	Issued by Dept Year Week		Lang			Sheet		
		COM/TKO 97 33		1			1		
Asea Brown Boveri				5492 0396-13				RevIncd Cont	
								-	