

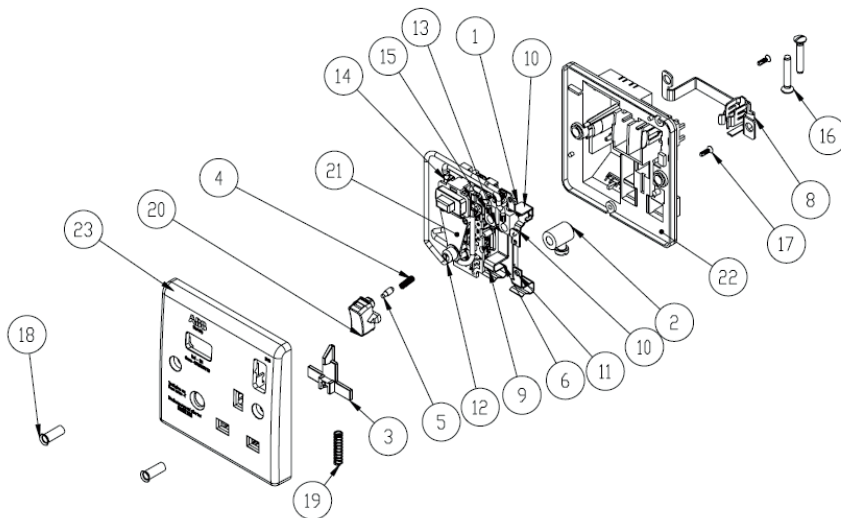
CRS112CL | 2TCZ752004R0040

1 gang 13 A RCD socket outlet 10 mA



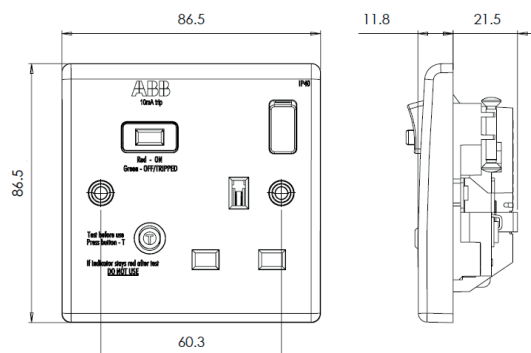
- SOCKET OUTLET RATING: 13 A 230 V~
- RCD TRIP CURRENT: 10 mA NOMINAL
- TRIP SPEED: LESS THAN 20 mS (TYPICAL)
- RATED CONDITIONAL: 1500 A POWER FACTOR
- COMPLY WITH BS7288, BS 1363-2
- FIT INTO 1 GANG HORIZONTAL FRAME
- COMPATIBLE WITH INSTALLATION BOXES OF DEPTH 35±2 MM

EXPLODED VIEW

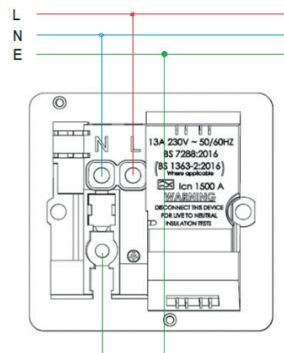


- 01 TERMINAL BLOCK ASSY
- 02 TERMINAL BLOCK
- 03 SHUTTER
- 04 PISTON SPRING
- 05 PISTON
- 06 LIVE CONTACT
- 07 ADJUSTABLE PIVOT
- 08 EARTH STRAP ASSY
- 09 NEUTRAL CONTACT
- 10 CONTACT PIVOT ASSY
- 11 LIVE BRASS ASSY
- 12 LIVE-MODULE TO TRAIN
- 13 NEUTRAL-MODULE TO TRAIN
- 14 NEUTRAL-TERMINAL TO MODULE
- 15 LIVE-TERMINAL TO MODULE
- 16 MOUNTING SCREW
- 17 FIXING SCREWS
- 18 TUBULAR RIVET
- 19 SHRTTER SPRING
- 20 SWITCH ROCKER
- 21 TYPEA MODULE
- 22 S.G.REAR MOULDING
- 23 FRONT COVER

DIMENSIONS



WIRING DIAGRAM



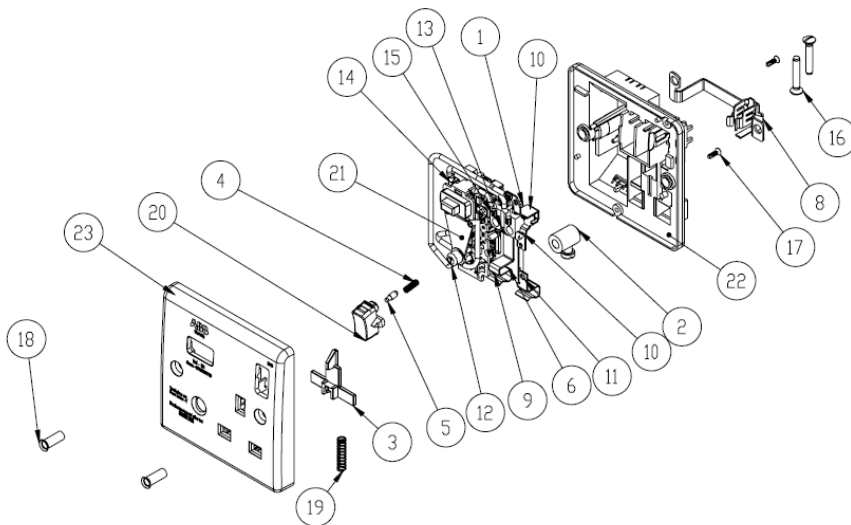
CRS113CL | 2TCZ752005R0040

1 gang 13 A RCD socket outlet 30 mA



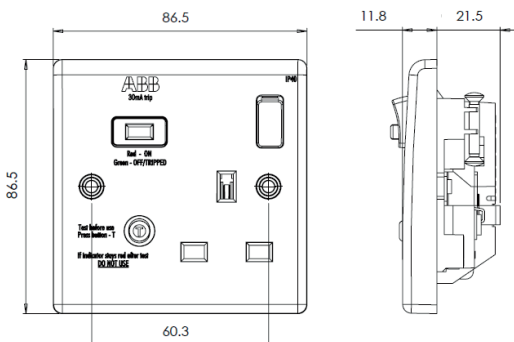
- SOCKET OUTLET RATING: 13 A 230 V~
- RCD TRIP CURRENT: 30 mA NOMINAL
- TRIP SPEED: LESS THAN 20 mS (TYPICAL)
- RATED CONDITIONAL: 1500 A POWER FACTOR
- COMPLY WITH BS7288, BS 1363-2
- FIT INTO 1 GANG HORIZONTAL FRAME
- COMPATIBLE WITH INSTALLATION BOXES OF DEPTH 35±2 MM

EXPLODED VIEW

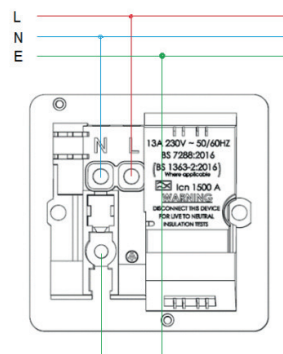


- 01 TERMINAL BLOCK ASSY
- 02 TERMINAL BLOCK
- 03 SHUTTER
- 04 PISTON SPRING
- 05 PISTON
- 06 LIVE CONTACT
- 07 ADJUSTABLE PIVOT
- 08 EARTH STRAP ASSY
- 09 NEUTRAL CONTACT
- 10 CONTACT PIVOT ASSY
- 11 LIVE BRASS ASSY
- 12 LIVE-MODULE TO TRAIN
- 13 NEUTRAL-MODULE TO TRAIN
- 14 NEUTRAL-TERMINAL TO MODULE
- 15 LIVE-TERMINAL TO MODULE
- 16 MOUNTING SCREW
- 17 FIXING SCREWS
- 18 TUBULAR RIVET
- 19 SHRTTER SPRING
- 20 SWITCH ROCKER
- 21 TYPEA MODULE
- 22 S.G.REAR MOULDING
- 23 FRONT COVER

DIMENSIONS

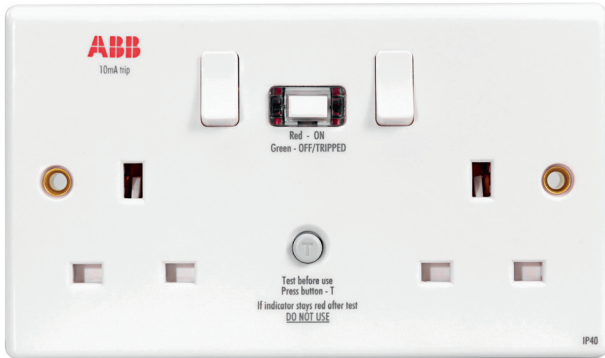


WIRING DIAGRAM



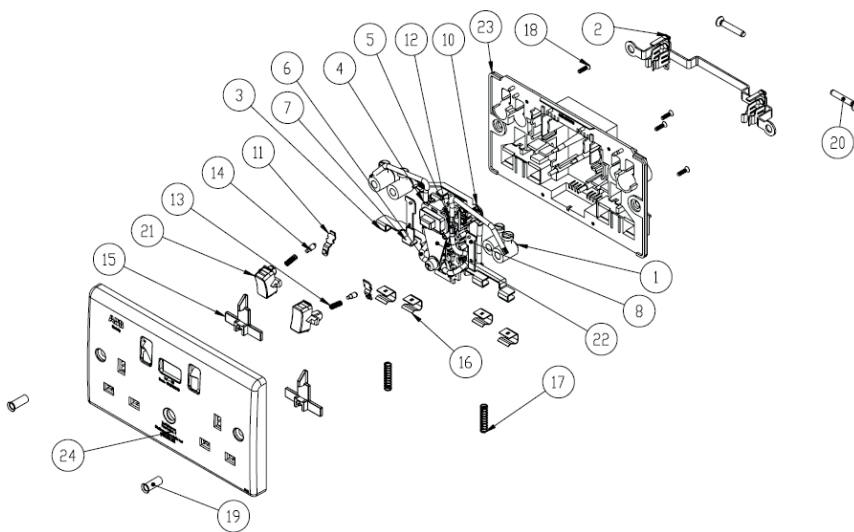
CRS212CL | 2TCZ752006R0040

2 gang 13 A RCD socket outlet 10 mA



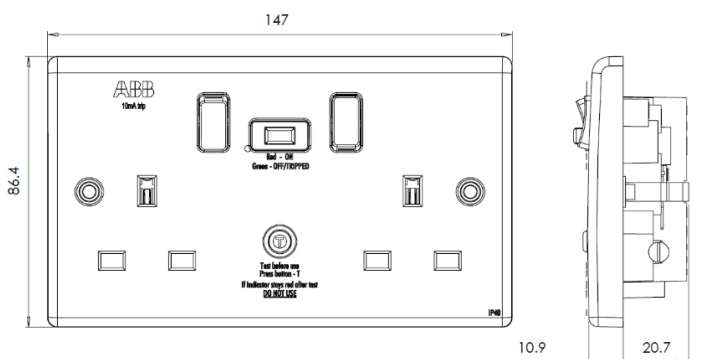
- SOCKET OUTLET RATING: 13 A 230 V~
- RCD TRIP CURRENT: 10 mA NOMINAL
- TRIP SPEED: LESS THAN 20 mS (TYPICAL)
- RATED CONDITIONAL: 1500A POWER FACTOR
- COMPLY WITH BS7288, BS 1363-2
- FIT INTO 2 GANG HORIZONTAL FRAME
- COMPATIBLE WITH INSTALLATION BOXES OF DEPTH 35±2 MM

EXPLODED VIEW

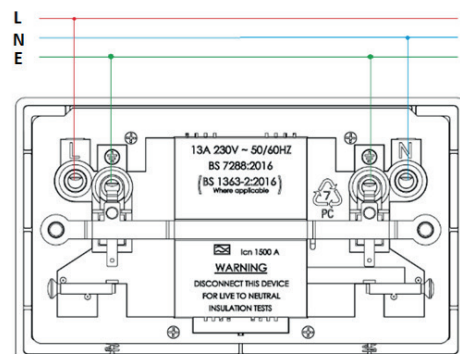


- 01 TERMINAL BLOCK ASSY
- 02 EARTH STRAP ASSY
- 03 NEUTRAL POWER TRAIN
- 04 NEUTRAL-TERMINAL TO MODULE
- 05 LIVE-TERMINAL TO MODULE
- 06 NEUTRAL-MODULE TO TRAIN
- 07 LH LIVE SWITCH POWER TRAIN ASSY
- 08 RH LIVE SWITCH POWER TRAIN ASSY
- 09 LIVE COMMON
- 10 LIVE COMMON
- 11 CONTACT PIVOT ASSY
- 12 LIVE-MODULE TO LIVE COMMON
- 13 PISTON SPRING
- 14 PISTON
- 15 SHUTTER
- 16 SOCKET CLIP
- 17 SHUTTER SPRING
- 18 FIXING SCREW
- 19 TUBULAR RIVET
- 20 MOUNTING SCREW
- 21 SWITCH ROCKER
- 22 TYPE A MODULE-30 mA
- 23 2g REAR MOULDING
- 24 FRONT COVER

DIMENSIONS

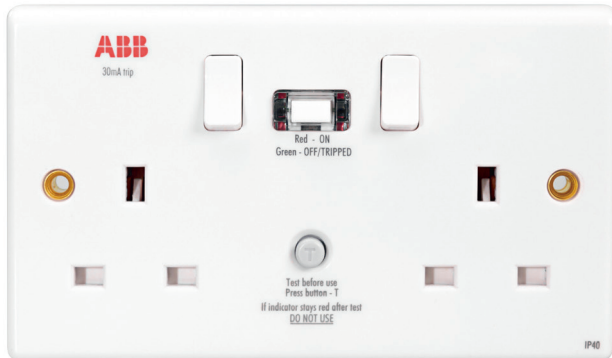


WIRING DIAGRAM



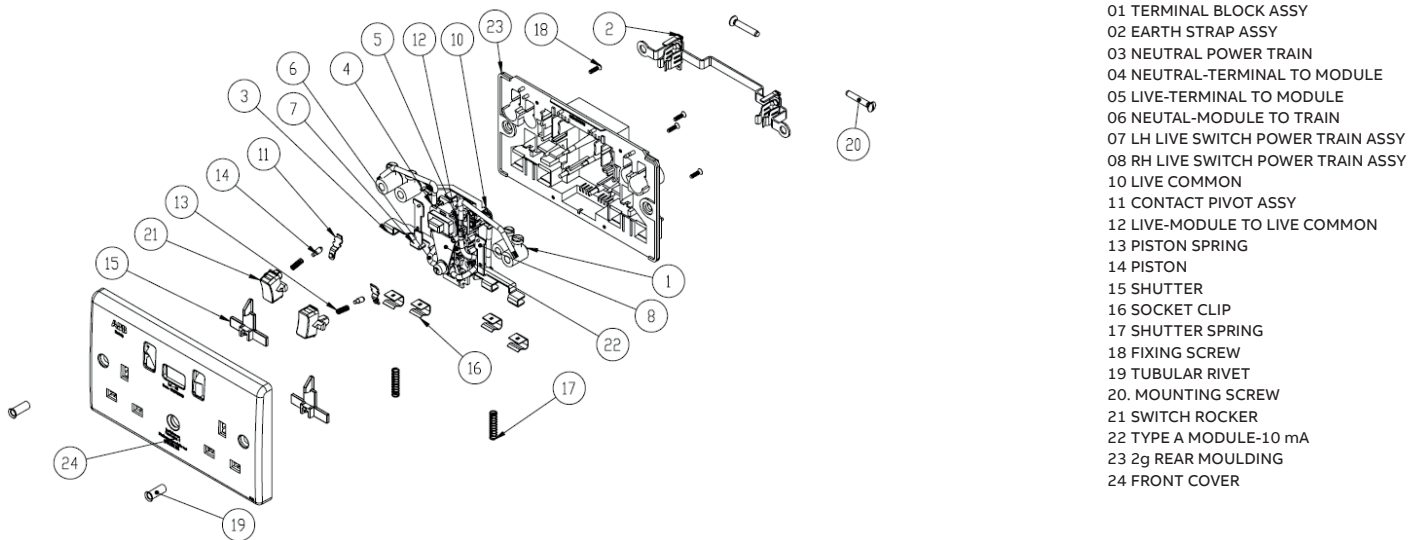
CRS213CL | 2TCZ752007R0040

2 gang 13 A RCD socket outlet 30 mA



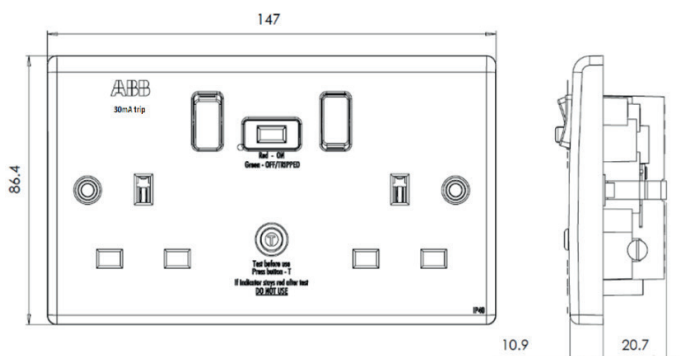
- SOCKET OUTLET RATING: 13 A 230 V~
- RCD TRIP CURRENT: 30 mA NOMINAL
- TRIP SPEED: LESS THAN 20 mS (TYPICAL)
- RATED CONDITIONAL: 1500 A POWER FACTOR
- COMPLY WITH BS7288, BS 1363-2
- FIT INTO 2 GANG HORIZONTAL FRAME
- COMPATIBLE WITH INSTALLATION BOXES OF DEPTH 35±2 MM

EXPLODED VIEW

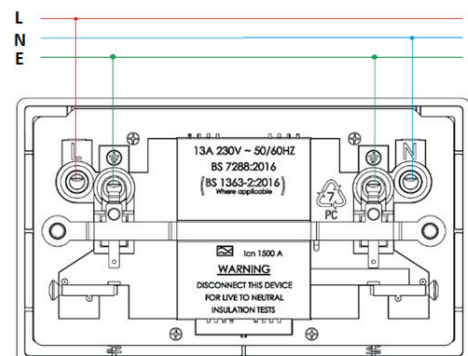


- 01 TERMINAL BLOCK ASSY
- 02 EARTH STRAP ASSY
- 03 NEUTRAL POWER TRAIN
- 04 NEUTRAL-TERMINAL TO MODULE
- 05 LIVE-TERMINAL TO MODULE
- 06 NEUTRAL-MODULE TO TRAIN
- 07 LH LIVE SWITCH POWER TRAIN ASSY
- 08 RH LIVE SWITCH POWER TRAIN ASSY
- 09 LIVE COMMON
- 10 LIVE COMMON
- 11 CONTACT PIVOT ASSY
- 12 LIVE-MODULE TO LIVE COMMON
- 13 PISTON SPRING
- 14 PISTON
- 15 SHUTTER
- 16 SOCKET CLIP
- 17 SHUTTER SPRING
- 18 FIXING SCREW
- 19 TUBULAR RIVET
- 20. MOUNTING SCREW
- 21 SWITCH ROCKER
- 22 TYPE A MODULE-10 mA
- 23 2g REAR MOULDING
- 24 FRONT COVER

DIMENSIONS



WIRING DIAGRAM



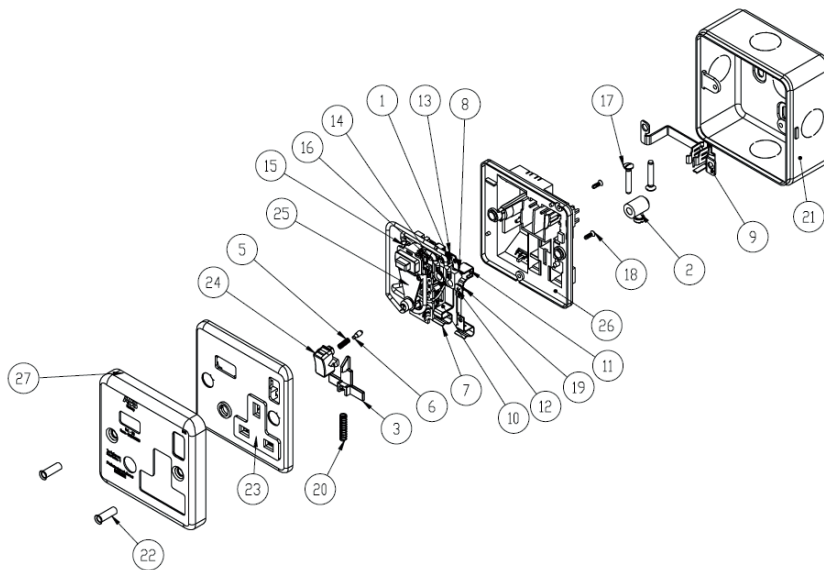
CRSM112CL | 2TCZ752008R0040

1 gang 13 A MetalClad RCD Socket Outlet 10 mA



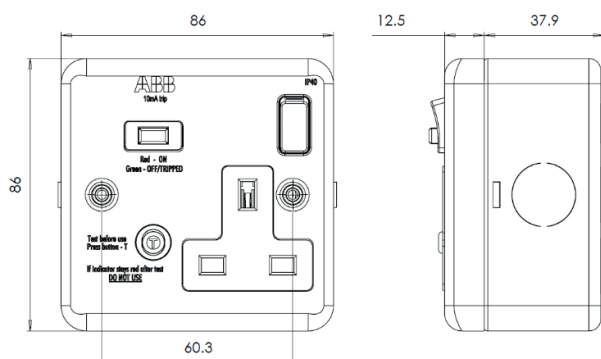
- SOCKET OUTLET RATING: 13 A 230 V~
- RCD TRIP CURRENT: 10 mA NOMINAL
- TRIP SPEED: LESS THAN 20 mS (TYPICAL)
- RATED CONDITIONAL: 1500 A POWER FACTOR
- COMPLY WITH BS7288, BS 1363-2
- FIT INTO 1 GANG HORIZONTAL FRAME

EXPLODED VIEW

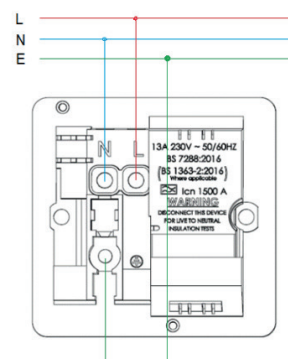


- 01 TERMINAL BLOCK ASSY
- 02 TERMINAL BLOCK
- 03 SHUTTER
- 05 PISTON SPRING
- 06 PISTON
- 07 LIVE CONTACT
- 08 ADJUSTABLE PIVOT
- 09 EARTH STRAP ASSY
- 10 S.G. NEUTRAL CONTACT
- 11 CONTACT PIVOT ASSY
- 12 LIVE BRASS ASSY
- 13 LIVE-MODULE TO TRAIN
- 14 NEUTRAL-MODULE TO TRAIN
- 15 NEUTRAL-TERMINAL TO MODULE
- 16 LIVE-TERMINAL TO MODULE
- 17 MOUNTING SCREW
- 18 FIXING SCREWS
- 19 GREEN EARTH WIRE
- 20 SHRTTER SPRING
- 21 H92 BOX
- 22 TUBULAR RIVET
- 23 FRONT COVER
- 24 SWITCH ROCKER
- 25 TYPE A MOUDLE 10 mA
- 26 S.G.REAR MOULDING
- 27 METAL COVER

DIMENSIONS



WIRING DIAGRAM



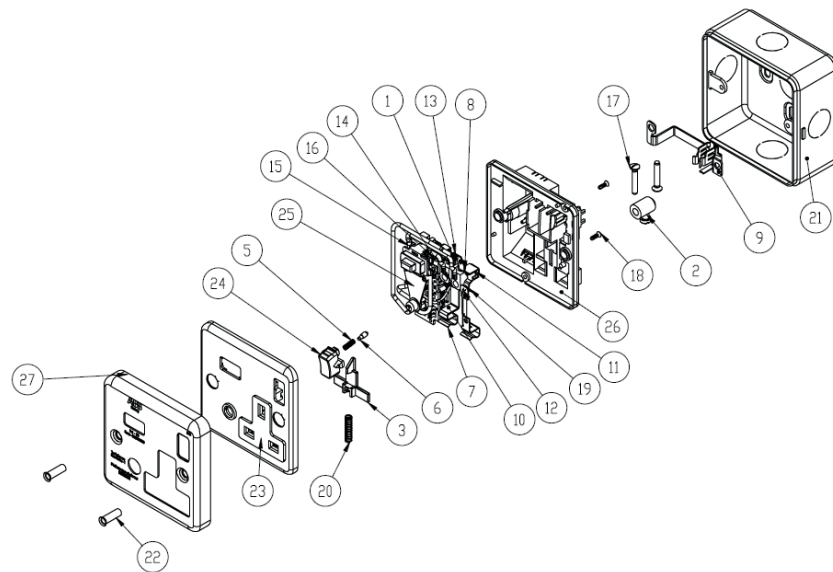
CRSM113CL | 2TCZ752009R0040

1 gang 13 A MetalClad RCD Socket Outlet 30 mA



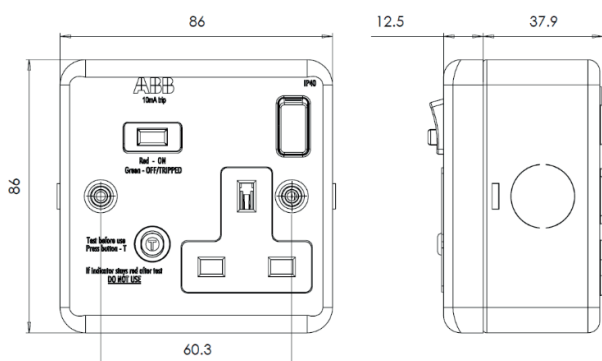
- SOCKET OUTLET RATING: 13 A 230 V~
- RCD TRIP CURRENT: 30 mA NOMINAL
- TRIP SPEED: LESS THAN 20 mS (TYPICAL)
- RATED CONDITIONAL: 1500 A POWER FACTOR
- COMPLY WITH BS7288, BS 1363-2
- FIT INTO 1 GANG HORIZONTAL FRAME

EXPLODED VIEW

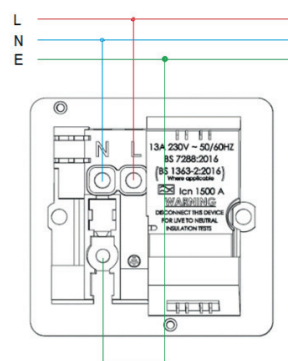


- 01 TERMINAL BLOCK ASSY
- 02 TERMINAL BLOCK
- 03 SHUTTER
- 05 PISTON SPRING
- 06 PISTON
- 07 LIVE CONTACT
- 08 ADJUSTABLE PIVOT
- 09 EARTH STRAP ASSY
- 10 S.G. NEUTRAL CONTACT
- 11 CONTACT PIVOT ASSY
- 12 LIVE BRASS ASSY
- 13 LIVE-MODULE TO TRAIN
- 14 NEUTRAL-MODULE TO TRAIN
- 15 NEUTRAL-TERMINAL TO MODULE
- 16 LIVE-TERMINAL TO MODULE
- 17 MOUNTING SCREW
- 18 FIXING SCREWS
- 19 GREEN EARTH WIRE
- 20 SHRTTER SPRING
- 21 H92 BOX
- 22 TUBULAR RIVET
- 23 FRONT COVER
- 24 SWITCH ROCKER
- 25 TYPE A MOUDLE 30 mA
- 26 S.G.REAR MOULDING
- 27 METAL COVER

DIMENSIONS

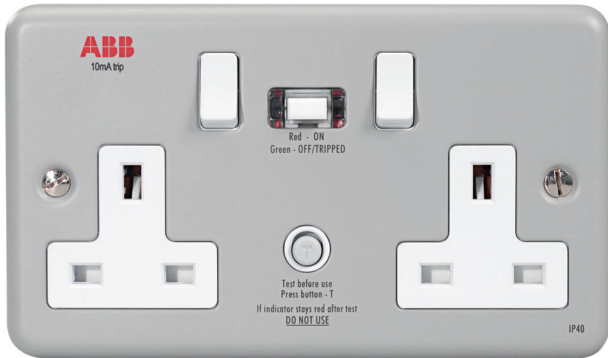


WIRING DIAGRAM



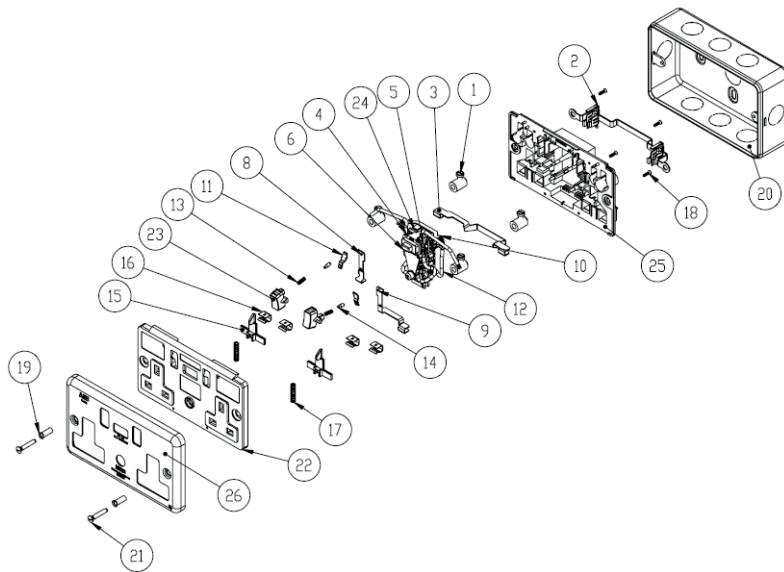
CRSM212CL | 2TCZ752010R0040

2 gang 13 A MetalClad RCD Socket Outlet 10 mA



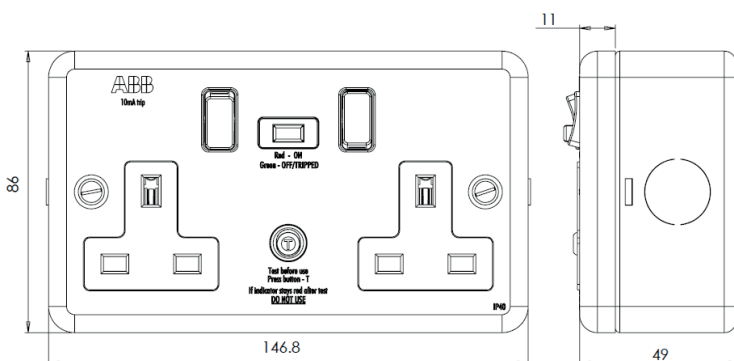
- SOCKET OUTLET RATING: 13 A 230 V~
- RCD TRIP CURRENT: 10 mA NOMINAL
- TRIP SPEED: LESS THAN 20 mS (TYPICAL)
- RATED CONDITIONAL: 1500 A POWER FACTOR
- COMPLY WITH BS7288, BS 1363-2
- FIT INTO 2 GANG HORIZONTAL FRAME

EXPLODED VIEW

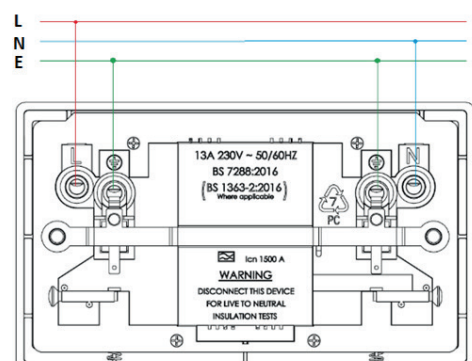


- 01 TTERMINAL BLOCK
- 02 EARTH STRAP ASSY
- 03 NEUTRAL POWER TRAIN
- 04 NEUTRAL-TERMINAL TO MODULE
- 05 LIVE-TERMINAL TO MODULE
- 06 NEUTAL-MODULE TO TRAIN
- 08 LH LIVE SWITCH POWER TRAIN ASSY
- 09 RH LIVE SWITCH POWERTRAIN ASSY
- 10 LIVE COMMON
- 11 CONTACT PIVOT ASSY
- 12 LIVE-MODULE TO LIVE COMMON
- 13 PISTON SPRING
- 14 PISTON
- 15 SHUTTER
- 16 SOCKET CLIP
- 17 SHUTTER SPRING
- 18. FIXING SCREWS
- 19 TUBULAR RIVET
- 20 MOUNTING BOX
- 21 MOUNTING SCREW
- 22. FRONT COVER
- 23 SWITCH ROCKER
- 24 TYPE A MOUDLE 10 mA
- 25 2G REAR MOULDING
- 26 METAL COVER

DIMENSIONS

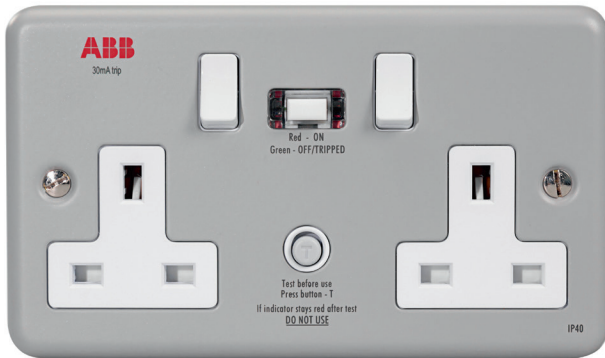


WIRING DIAGRAM



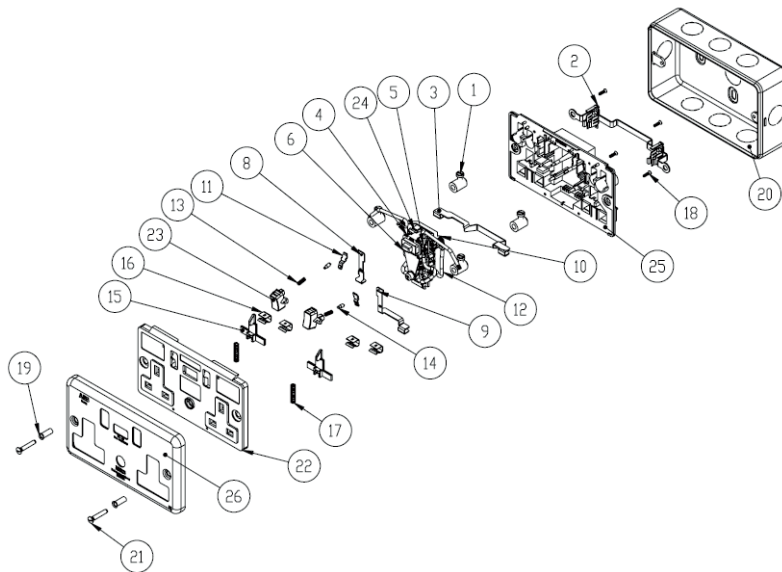
CRSM213CL | 2TCZ752011R0040

2 gang 13 A MetalClad RCD Socket Outlet 30 mA



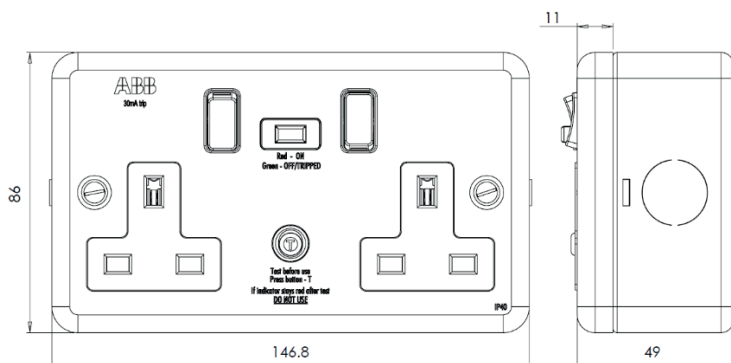
- SOCKET OUTLET RATING: 13 A 230 V~
- RCD TRIP CURRENT: 30 mA NOMINAL
- TRIP SPEED: LESS THAN 20 mS (TYPICAL)
- RATED CONDITIONAL: 1500 A POWER FACTOR
- COMPLY WITH BS7288, BS 1363-2
- FIT INTO 2 GANG HORIZONTAL FRAME

EXPLODED VIEW



- 01 T TERMINAL BLOCK
- 02 EARTH STRAP ASSY
- 03 NEUTRAL POWER TRAIN
- 04 NEUTRAL-TERMINAL TO MODULE
- 05 LIVE-TERMINAL TO MODULE
- 06 NEUTAL-MODULE TO TRAIN
- 08 LH LIVE SWITCH POWER TRAIN ASSY
- 09 RH LIVE SWITCH POWERTRAIN ASSY
- 10 LIVE COMMON
- 11 CONTACT PIVOT ASSY
- 12 LIVE-MODULE TO LIVE COMMON
- 13 PISTON SPRING
- 14 PISTON
- 15 SHUTTER
- 16 SOCKET CLIP
- 17 SHUTTER SPRING
- 18 FIXING SCREWS
- 19 TUBULAR RIVET
- 20 MOUNTING BOX
- 21 MOUNTING SCREW
- 22 FRONT COVER
- 23 SWITCH ROCKER
- 24 TYPE A MOUDLE 30 mA
- 25 2G REAR MOULDING
- 26 METAL COVER

DIMENSIONS



WIRING DIAGRAM

