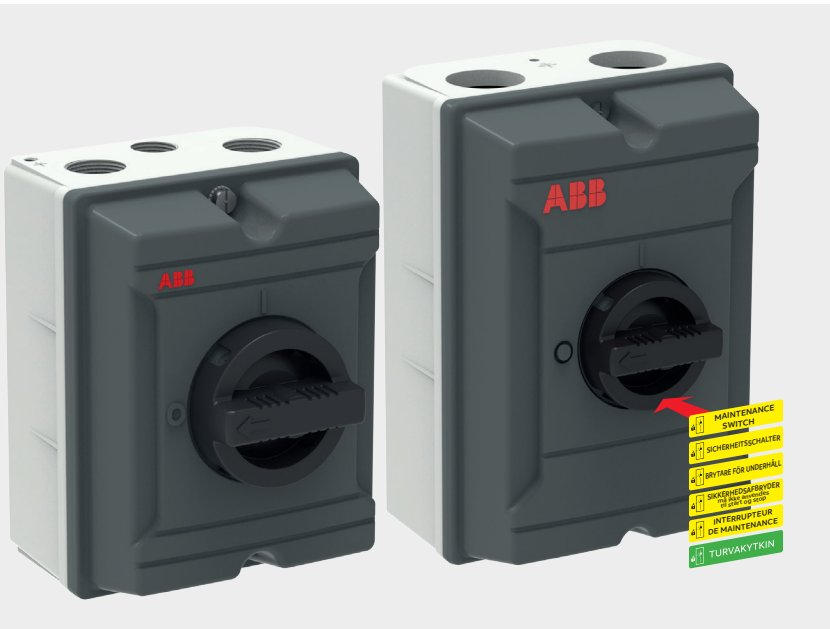


INSTALLATION INSTRUCTION

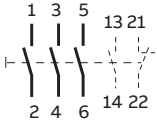
Aluminium Enclosed Maintenance Switch

OTA16...100G_, OKA25...80G_,
LBAS_63...100G_, KSE_16..._100G_

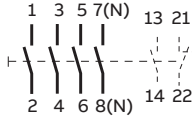


Terminal markings

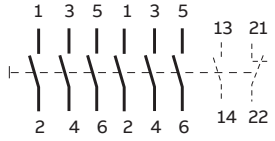
OT_3_



OT_4_

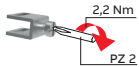


OT_6_

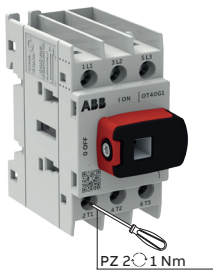


Wiring for

Wire 1.5...16 mm²



OT_16...40G_



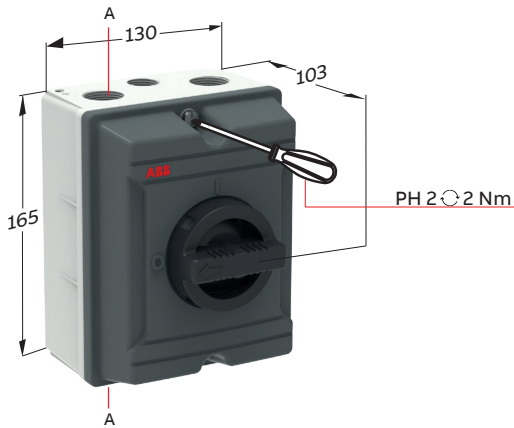
Wire type (Cu only)	1 Wire (mm ²)	Stripping length	Tightening torque
Class 5-Flexible	1.5-16		 PZ 2
Class 2-Stranded	1.5-16		
Class 6-Very flexible with ferrule	0.75-4		 1 Nm
Class 1-Solid	0.75-6		

Auxiliary contact AUXG_



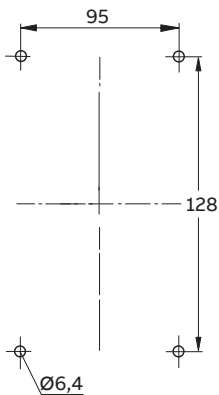
Wire type (Cu only)	1 Wire (mm ²)	Stripping length	Tightening torque
Class 5-Flexible	0.75-2.5		 PZ 2
Class 2-Stranded	0.75-2.5		
Class 6-Very flexible with ferrule	0.75-1.5		 0.8 Nm
Class 1-Solid	0.75-2.5		

Installation



A =

OTA 16=2xM25 + M20
 KSE_16=2xM25 + M20
 OTA 25=2xM25 + M20
 KSE_25=2xM25 + M20
 OTA 40=2xM32 + M20
 KSE_40=2xM32 + M20



Wiring for

OT_16...40G_6_



Wire type (Cu only)	1 Wire (mm ²)	Stripping length	Tightening torque
Class 5-Flexible	1.5-16	 9-10 mm	 PZ 2 1 Nm
Class 2-Stranded	1.5-16		
Class 6-Very flexible with ferrule	0.75-4		
Class 1-Solid	0.75-6		

Auxiliary contact AUXG_



Wire type (Cu only)	1 Wire (mm ²)	Stripping length	Tightening torque
Class 5-Flexible	0.75-2.5	 8-10 mm	 PZ 2 0.8 Nm
Class 2-Stranded	0.75-2.5		
Class 6-Very flexible with ferrule	0.75-1.5		
Class 1-Solid	0.75-2.5		

Wiring for

OT_63...80G_



Wire type (Cu only)	1 Wire (mm ²)	Stripping length	Tightening torque
Class 5-Flexible	1.5-35	 13-16 mm	 PZ 2 2 Nm
Class 2-Stranded	1.5-35		
Class 6-Very flexible with ferrule	1.5-4		
Class 1-Solid	1.5-6		

OT_100...125G_



Wire type (Cu only)	1 Wire (mm ²)	Stripping length	Tightening torque
Class 5-Flexible	4-70	 16-18 mm	 PZ 2 6 Nm 4 mm
Class 2-Stranded	4-70		
Class 6-Very flexible with ferrule	2.5-4		
Class 1-Solid	2.5-6		

Auxiliary contact AUXG_



Wire type (Cu only)	1 Wire (mm ²)	Stripping length	Tightening torque
Class 5-Flexible	0.75-2.5	 8-10 mm	 PZ 2 0,8 Nm
Class 2-Stranded	0.75-2.5		
Class 6-Very flexible with ferrule	0.75-1.5		
Class 1-Solid	0.75-2.5		

Wiring for PE and N-terminals in Aluminium Enclosed Maintenance Switches



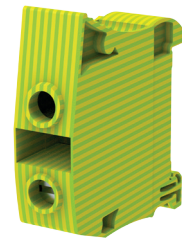
OT_63_, OT_80G_ Neutral terminal PNG2

Wire type (Cu only)	1 Wire (mm ²)	Stripping length	Tightening torque
Class 5-Flexible	1.5-35		PZ 2 2 Nm
Class 2-Stranded	1.5-35		
Class 6-Very flexible with ferrule	1.5-4		
Class 1-Solid	1.5-6		



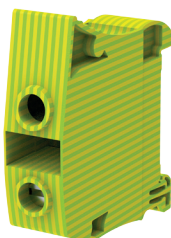
OT_100G_, OT_125G_ Neutral terminal PNG3

Wire type (Cu only)	1 Wire (mm ²)	Stripping length	Tightening torque
Class 5-Flexible	4-70		4 mm 6 Nm
Class 2-Stranded	4-70		
Class 6-Very flexible with ferrule	2.5-4		
Class 1-Solid	2.5-6		



OT_16...40G_ PE terminal

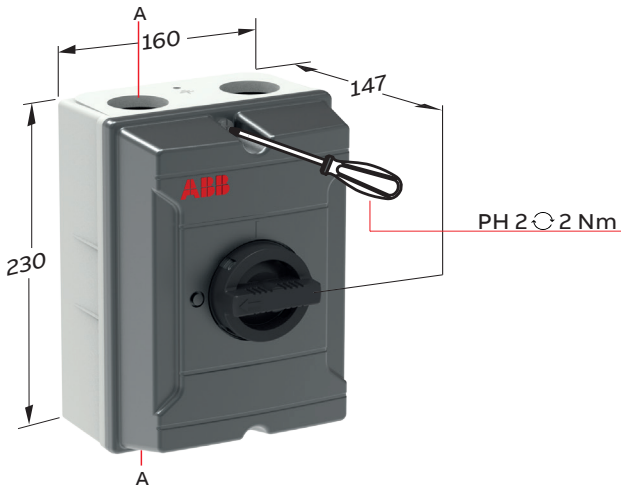
Wire type (Cu only)	1 Wire (mm ²)	Stripping length	Tightening torque
Rigid: Solid/Stranded	0.5-16		5.5 mm 1.8 Nm
Flexible without ferrule	0.5-16		
Flexible with non insulated ferrule	0.5-16		
Flexible with insulated ferrule	0.5-10		



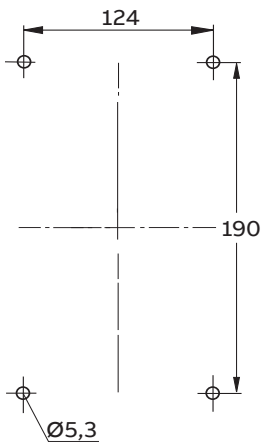
OT_63...125G_ PE terminal

Wire type (Cu only)	1 Wire (mm ²)	Stripping length	Tightening torque
Rigid: Solid/Stranded	6-35		6.5 mm 2.65 Nm
Flexible without ferrule	6-35		
Flexible with non insulated ferrule	4-35		
Flexible with insulated ferrule	4-35		

Installation



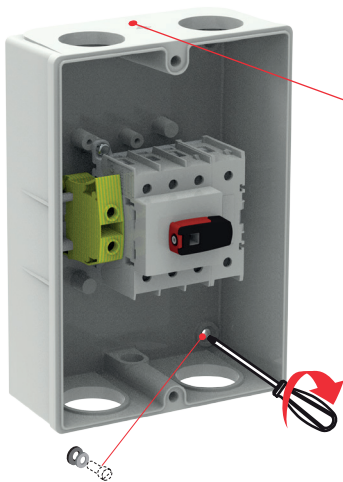
A = 2xM40+M16



IP65



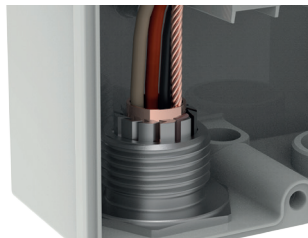
IP65 → IP54



! If needed connect grounding cable to box.



! When using EMC cable glands/cables make sure cable shield is properly grounded in cable gland.



Locking on OFF position



Locking on ON position



! Before ON position
locking 2 plastic pieces
should be removed.



BG	Внимание! Опасно напряжение! Да се монтира само от лице с електротехническа квалификация.
CN	警告！电压危险！只能由专业电工进行安装。
CZ	Varování! Nebezpečné napětí! Montáž smí provádět výhradně elektrotechnik!
DA	Advarsel! Farlig elektrisk spænding! Installation må kun foretages af personer med elektroteknisk ekspertise.
DE	Warnung! Gefährliche Spannung! Installation nur durch elektrotechnische Fachkraft.
EL	Προειδοποίηση! Υψηλή τάση! Η εγκατάσταση πρέπει να γίνεται μόνο από εξειδικευμένους ηλεκτροτεχνικούς.
EN	Warning! Hazardous voltage! Installation by person with electrotechnical expertise only.
ES	¡Advertencia! ¡Tensión peligrosa! La instalación deberá ser realizada únicamente por electricistas especializados.
ET	Hoiatus! Ohtlik pinge. Paigaldada võib ainult elektrotehnika-alane ekspert.
FI	Varoitus! Vaarallinen jännite! Asennuksen voi tehdä vain sähköalan ammattihenkilö.
FR	Avertissement! Tension électrique dangereuse! Installation uniquement par des personnes qualifiées en électrotechnique.
HR	Upozorenje! Opasan napon! Postavljati smije samo elektrotehnički stručnjak.
HU	Figyelmeztetés! Veszélyes feszültség! Csak elektrotechnikai tapasztalattal rendelkező szakember helyezheti üzembe.
IE	Rabhadh! Voltas guaiseach! Ba chóir do dhuine ag a bhfuil saineolas leictriteicniúil, agus an té sin amháin, é seo a shuiteáil.
IT	Avvertenza! Tensione pericolosa! Fare installare solo da un elettricista qualificato.
LT	Dėmesio! Pavojinga įtampa! Dirbti leidžiama tik elektrotechniko patirties turintiems asmenims.
LV	Uzmanību! Bīstami - elektrība! Montāžas darbus drīkst veikt tikai personas, kurām ir atbilstošas elektrotehnikās zināšanas.
MT	Twissija! Vultaġġ perikoluż! Għandu jiġi installat biss minn persuna b'kompetenza elettroteknika.
NL	Waarschuwing! Gevaarlijke spanning! Mag alleen geïnstalleerd worden door een deskundige elektrotechnicus.
NO	Advarsel! Farlig spenning! Montering skal kun utføres av kvalifiserte personer med elektrokompetanse.
PL	Ostrzeżenie! Niebezpieczne napięcie! Instalacji może dokonać wyłącznie osoba z fachową wiedzą w dziedzinie elektrotechniki.
PT	Aviso! Tensão perigosa! A instalação só deve ser realizada por um eletricista especializado.
RO	Avertizare! Tensiune periculoasă! Instalarea trebuie efectuată numai de către o persoană cu experiență în electrotehnică.
RU	Осторожно! Опасное напряжение! Монтаж должен выполняться только специалистом-электриком.
SE	Varning! Farlig spänning! Installation får endast utföras av en elektriker.
SK	Varovanie! Nebezpečné napätie! Montáž môže vykonávať iba skúsený elektrotechnik.
SL	Opozorilo! Nevarna napetost! Vgradnjo lahko opravi le oseba z elektrotehničnim strokovnim znanjem.



Contact us

ABB Oy

Muottitie 2A, 65320

Vaasa, Finland

abb.com/lowvoltage