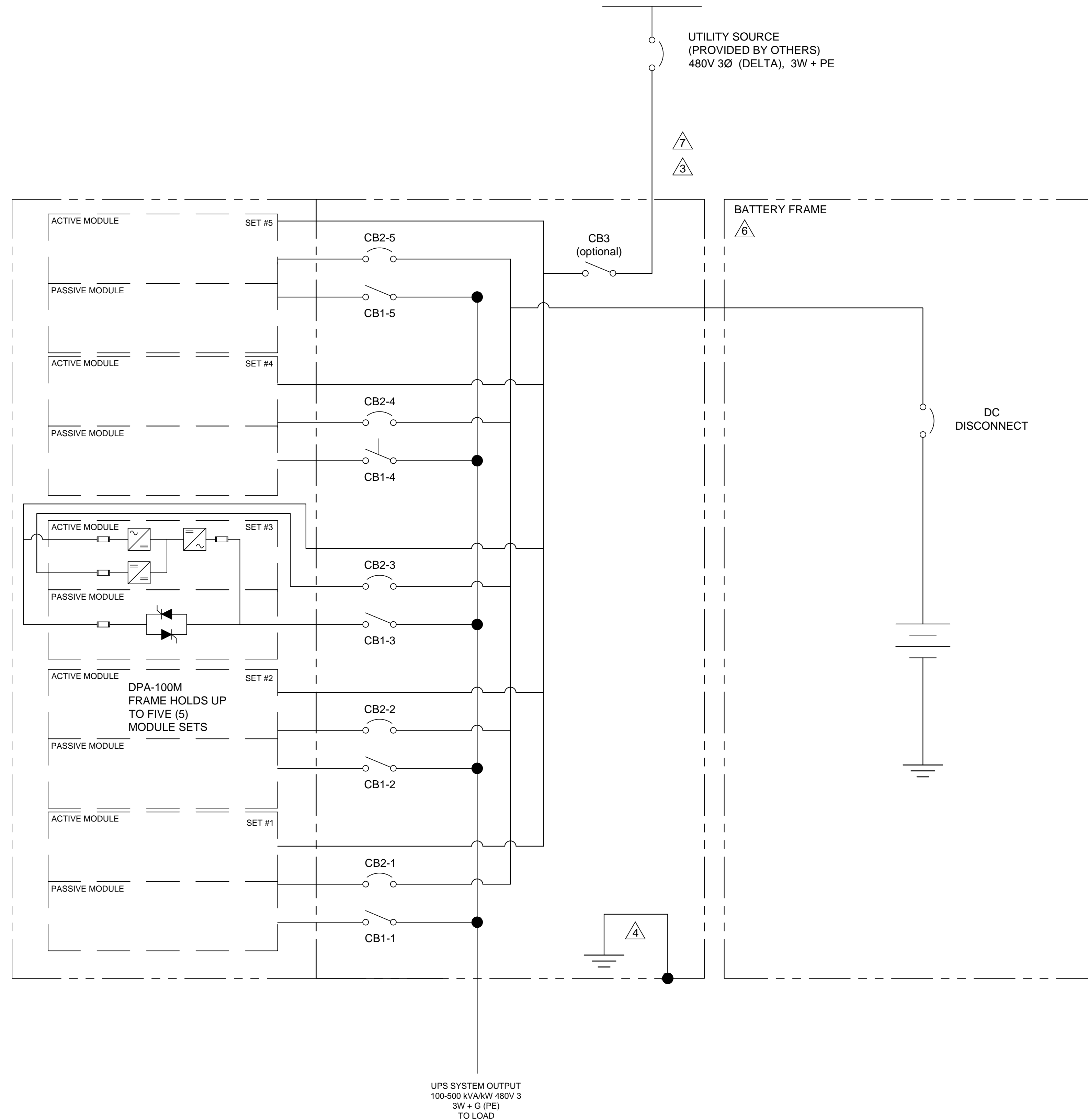


We reserve all rights in this document and in the information contained therein. Reproduction, use or disclosure to third parties without express authority is strictly forbidden. © Copyright 2014 ABB.



UPS System Ratings						
The values below are design ratings per phase. Consult the values below when selecting appropriate upstream AC over current protective devices (OCPD).						
UPS Rating (kW)	DPA Modules	Rectifier AC Input Current (A)		Battery Current (A)	Bypass Current (A)	Output Current (A)
		Nominal	Maximum			
100	1	123	138	189	121	120
200	2	246	276	378	243	241
300	3	368	413	567	364	361
400	4	491	551	756	486	481
500	5	614	689	945	607	601

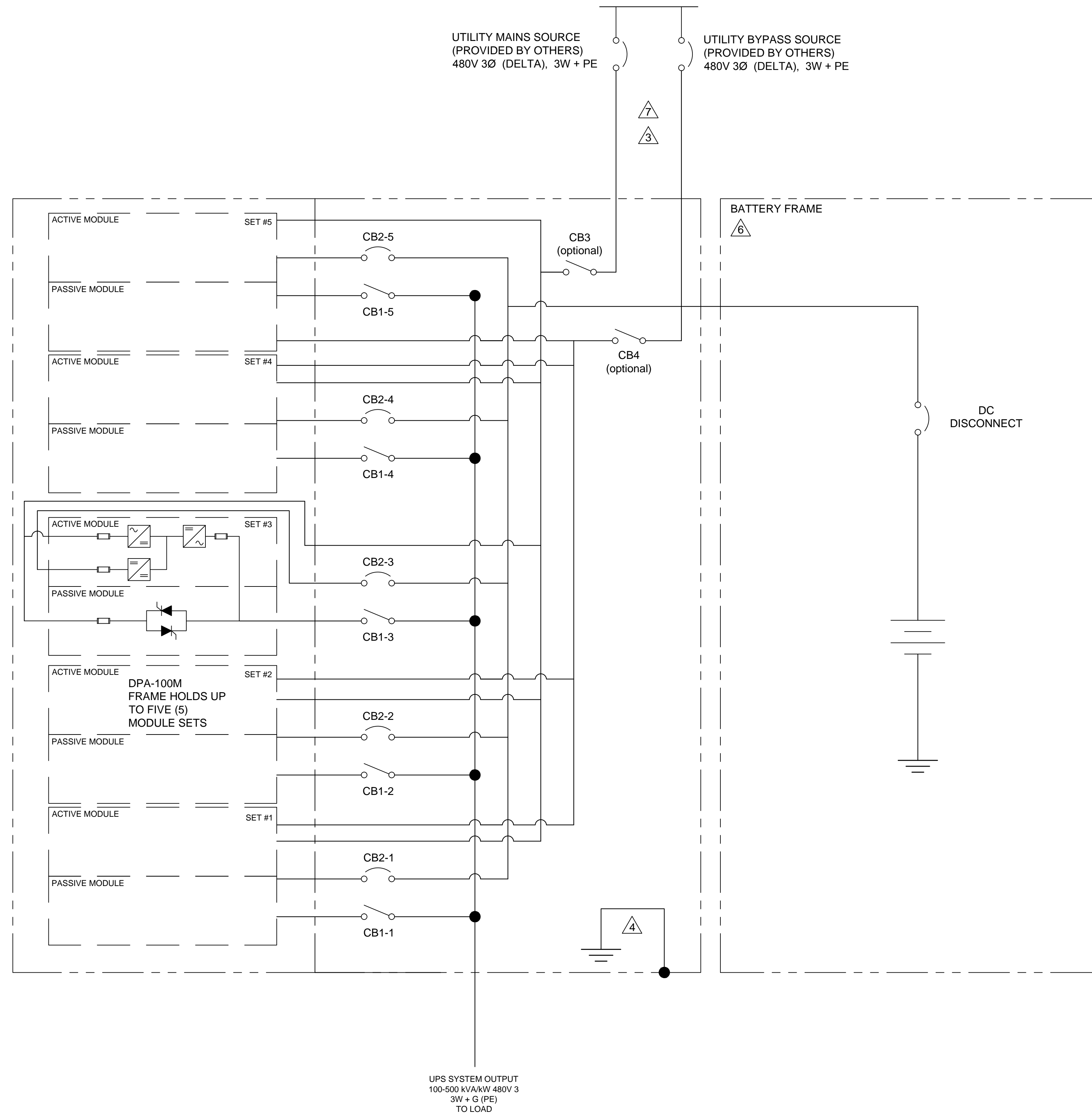
OCPD Recommendations				
The values below are design ratings per phase. Consult the values below when selecting appropriate upstream AC over current protective devices (OCPD).				
UPS Rating (kW)	Rectifier AC Input	DC Input	Bypass AC Input & AC Output	Maintenance Bypass AC Input
	80% Rated / 100% Rated	80% Rated / 100% Rated	80% Rated / 100% Rated	80% Rated / 100% Rated
100	200A / 150A	400A / 250A	200A / 150A	200A / 150A
200	400A / 400A	600A / 400A	400A / 400A	400A / 400A
300	600A / 600A	800A / 600A	600A / 400A	600A / 400A
400	800A / 800A	1000A / 800A	800A / 600A	800A / 600A
500	1000A / 800A	1200A / 1000A	1000A / 800A	1000A / 800A

Device Rating				
Device	Rating	Type	Make	Model
CB1-1,2,3,4,5	225A, 600V	3P MCS	ABB	T3
CB2-1,2,3,4,5	250A, 600V DC	4P MCCB	ABB	T4
CB3	800A, 600V	3P MCS or MCCB	ABB	T6

- NOTES:**
1. INTALLATION SHALL COMPLY WITH ALL APPLICABLE NATIONAL, STATE AND LOCAL CODES.
 2. REFER TO PRODUCT DOCUMENTATION FOR ADDITIONAL DETAILS PRIOR TO INSTALLATION AND SITE PREPARATION WORK.
 - △ 3. UPS IS CONFIGURED AS SINGLE INPUT FEED (STANDARD). OPTIONAL DUAL INPUT FEED IS AVAILABLE BY REMOVING BUS BAR JUMPERS BETWEEN RECTIFIER AND BYPASS INPUT TERMINALS. CONSULT FACTORY FOR DUAL FEED CONFIGURATION.
 - △ 4. AVAILABLE AS 3-WIRE CONFIGURATION (STANDARD). CONSULT FACTORY FOR 4-WIRE CONFIGURATIONS.
 5. CONNECT RECTIFIER AND BYPASS INPUT CABLES IN CLOCKWISE PHASE ROTATION.
 - △ 6. UPS CABINET DOES NOT PROVIDE SPACE FOR BATTERIES. EXTERNAL BATTERIES MUST BE PROVIDED BY OTHERS AND HOUSED IN CABINETS OR SHELVES/RACKS. SEE OPERATIONS MANUAL FOR DETAILS.
 - △ 7. AC CABLING SHALL BE 600V RATED, 3W + G (PE).

Part must comply with company doc. 94-10-000001. Interpret drawing in accordance with ASME Y14.5-2009.		Document Kind Electrical Schematic	Title CONCEPTPOWER DPA 500 480V UL SYSTEM ONELINE DISTRIBUTION SINGLE INPUT FEED	Units Inch	Sheet Size D
Tolerance X.XX = ±0.30 X.XXX = ±0.15 Hole = ±0.05 Angle = ±1/2"	Prepared CAB Approved CAB Division/Dept. DMPC/Power Protection	Reference N/A	Item No. 94-7300-00000050 Document ID ONE-00089345	Scale N:N	Date Drawn 7/31/2015 Page 1 / 1
A00 -- CAB Rev. ECN# Resp.		Initial Release Description Revision Table		11/11/2015 Date	
		Revision Table			
		Revision Table			

We reserve all rights in this document and in the information contained therein. Reproduction, use or disclosure to third parties without express authority is strictly forbidden. © Copyright 2014 ABB.



UPS System Ratings

The values below are design ratings per phase. Consult the values below when selecting appropriate upstream AC over current protective devices (OCPD).

UPS Rating (kW)	DPA Modules	Rectifier AC Input Current (A)		Battery Current (A)	Bypass Current (A)	Output Current (A)
		Nominal	Maximum			
100	1	123	138	189	121	120
200	2	246	276	378	243	241
300	3	368	413	567	364	361
400	4	491	551	756	486	481
500	5	614	689	945	607	601

OCPD Recommendations

The values below are design ratings per phase. Consult the values below when selecting appropriate upstream AC over current protective devices (OCPD).

UPS Rating (kW)	Rectifier AC Input	DC Input	Bypass AC Input & AC Output	Maintenance Bypass AC Input
	80% Rated / 100% Rated	80% Rated / 100% Rated	80% Rated / 100% Rated	80% Rated / 100% Rated
100	200A / 150A	400A / 250A	200A / 150A	200A / 150A
200	400A / 400A	600A / 400A	400A / 400A	400A / 400A
300	600A / 600A	800A / 600A	600A / 400A	600A / 400A
400	800A / 800A	1000A / 800A	800A / 600A	800A / 600A
500	1000A / 800A	1200A / 1000A	1000A / 800A	1000A / 800A

Device Rating

Device	Rating	Type	Make	Model
CB1-1,2,3,4,5	225A, 600V	3P MCS	ABB	T3
CB2-1,2,3,4,5	250A, 600V DC	4P MCCB	ABB	T4
CB3	800A, 600V	3P MCS or MCCB	ABB	T6
CB4	800A, 600V	3P MCS or MCCB	ABB	T6

- NOTES:**
- INSTALLATION SHALL COMPLY WITH ALL APPLICABLE NATIONAL, STATE AND LOCAL CODES.
 - REFER TO PRODUCT DOCUMENTATION FOR ADDITIONAL DETAILS PRIOR TO INSTALLATION AND SITE PREPARATION WORK.
 - UPS IS CONFIGURED AS SINGLE INPUT FEED (STANDARD). OPTIONAL DUAL INPUT FEED IS AVAILABLE BY REMOVING BUS BAR JUMPERS BETWEEN RECTIFIER AND BYPASS INPUT TERMINALS. CONSULT FACTORY FOR DUAL FEED CONFIGURATION.
 - AVAILABLE AS 3-WIRE CONFIGURATION (STANDARD). CONSULT FACTORY FOR 4-WIRE CONFIGURATIONS.
 - CONNECT RECTIFIER AND BYPASS INPUT CABLES IN CLOCKWISE PHASE ROTATION.
 - UPS CABINET DOES NOT PROVIDE SPACE FOR BATTERIES. EXTERNAL BATTERIES MUST BE PROVIDED BY OTHERS AND HOUSED IN CABINETS OR SHELVES/RACKS. SEE OPERATIONS MANUAL FOR DETAILS.
 - AC CABLING SHALL BE 600V RATED, 3W + G (PE).

Part must comply with company doc. 94-10-000001. Interpret drawing in accordance with ASME Y14.5-2009.		Document Kind Electrical Schematic	Title CONCEPTPOWER DPA 500 480V UL SYSTEM ONELINE DISTRIBUTION DUAL INPUT FEED	Units Inch	Sheet Size D
Tolerance X.XX = ±0.30 X.XXX = ±0.15 Hole = ±0.05 Angle = ±1/2"	Prepared CAB Approved CAB Division/Dept. DMPC/Power Protection	Reference N/A	Item No. 94-7300-00000050 Document ID ONE-00089345	Scale N:N	Date Drawn 7/31/2015 Page 1 / 1
		ABB			

A00	Rev.	ECN#	Resp.	Description	Date
---	---	CAB		Initial Release	11/11/2015
Revision Table					