

ACCESS TO: Front Only	PHASE: 3P4W	CITY OF SEATTLE - (WA)
CLASS: 2	AMPERE: 4000A	CODE: ST PT COMPT
LABEL: U/L SE	BUS MTL: Cu 1000A/in ²	UTILITY PER EUSERC PG. 324, 330
VOLTAGE: 480/277V	PLATE: Silver Plate	METER PER EUSERC PG. 332
STYLE: ReliaGear	RATING: Fully Rated	UGPS PER PG 345
BUS BRACING (RMS SYM): 100000A		LUG LANDING PER 347
DEV.MIN.INT.RATING (RMS SYM): 100000A		

SwitchBoard / Device Information

Circuit No.	Device	Trip Amps	Sensor Amps	Poles	Nameplates	Lugs/Cable Size	Notes
Main	E6.2VF	4000	4000	3			10,11,12,13,14,15,16,19,20,21

- NOTES:**
1. Equipment ground bus furnished with lugs.
 2. Copper ground bus furnished.
 3. Switchboard furnished with Nameplates.
 4. All Nameplates to be fastened with screws.
 5. Shipping splits between each section, ship each section separately.
 6. Switchboard furnished with hinged gutter covers.
 7. Switchboard furnished with full height vertical bus for distribution sections.
 8. EUSERC utility section(s) furnished with handles and sealing provisions per EUSERC specifications.
 9. INSTALLATION NOTE: Caution: If switchboard is installed on a housekeeping slab greater than 2-1/2" the meter may be over the 6'3" maximum allowable meter height. Consult Utility if you need more information.
 10. Device is 100 percent rated.
 11. Device is furnished with integral ground fault protection.
 12. Device is furnished with RELT (Reduced Energy Let Through).
 13. Device requires RELT or ZSI feature if Authority having jurisdiction has adopted NEC 2014 code requirements.
 14. Device Furnished with Ekip Touch (LSIG) Programmer.
 15. Device furnished with (4Q) Auxiliary Contacts - 400V
 16. Device furnished with (S51/2) Bell Alarm - 250V
 17. Estimated total factory connected wiring points for the lineup 28.
 18. Estimated shipping weight for the lineup is 3132 lbs.
 19. Device furnished with DC Supply - 24V - 48V
 20. Device furnished with RELT-Ekip Signalling 2K3
 21. Device furnished with Padlock in open position

PROJECT NAME : Merchandise Program
CUSTOMER:

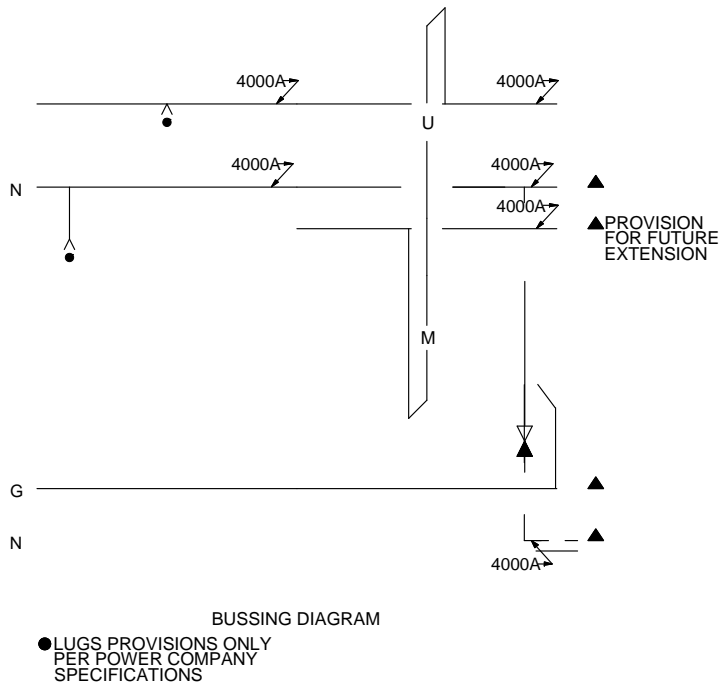
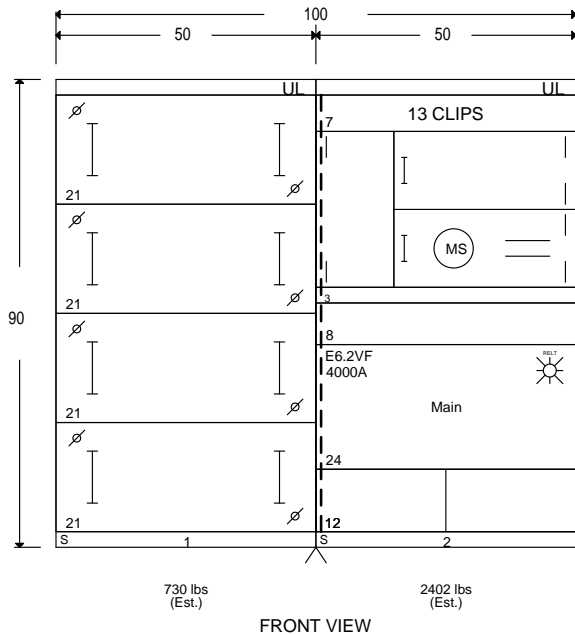


DRAWING TITLE: Device Information
CREATED BY:
DATE:
REVISION NO.:

PRODUCT NAME: ReliaGear Merchandised SB

DRAWING NO:	ITEM NO: RSBM44010CN1BEU
MARKS: 4000A MCB EUSERC N1	QUOTE NO:
SHEET:	1 of 3

ACCESS TO: Front Only	PHASE: 3P4W	CITY OF SEATTLE - (WA)
CLASS: 2	AMPERE: 4000A	CODE: ST PT COMPT
LABEL: U/L SE	BUS MTL: Cu 1000A/in ²	UTILITY PER EUSERC PG. 324, 330
VOLTAGE: 480/277V	PLATE: Silver Plate	METER PER EUSERC PG. 332
STYLE: ReliaGear	RATING: Fully Rated	UGPS PER PG 345
BUS BRACING (RMS SYM): 100000A		LUG LANDING PER 347
DEV.MIN.INT.RATING (RMS SYM): 100000A		



PROJECT NAME : Merchandise Program
CUSTOMER:

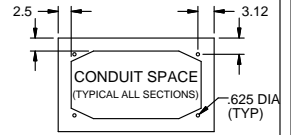


DRAWING TITLE: Front View/ Bussing
CREATED BY:
DATE:
REVISION NO.:

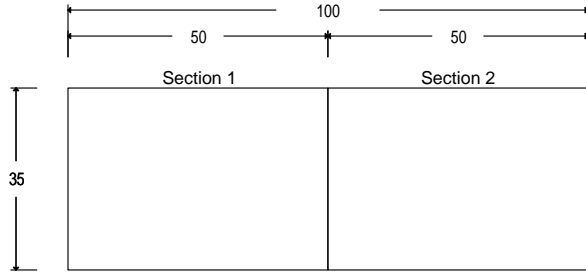
PRODUCT NAME: ReliaGear Switchboard CTO
--

DRAWING NO:
ITEM NO: RSBM44010CN1BEU
MARKS: 4000A MCB EUSERC N1
QUOTE NO:
SHEET: 2 of 3

ACCESS TO: Front Only	PHASE: 3P4W	CITY OF SEATTLE - (WA)
CLASS: 2	AMPERE: 4000A	CODE: ST PT COMPT
LABEL: U/L SE	BUS MTL: Cu 1000A/in ²	UTILITY PER EUSERC PG. 324, 330
VOLTAGE: 480/277V	PLATE: Silver Plate	METER PER EUSERC PG. 332
STYLE: ReliaGear	RATING: Fully Rated	UGPS PER PG 345
BUS BRACING (RMS SYM):	100000A	LUG LANDING PER 347
DEV.MIN.INT.RATING (RMS SYM):	100000A	

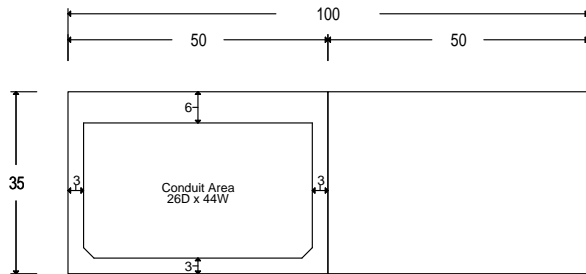


Top Conduit Area



Front Plan View

Bottom Conduit Area



Front Plan View

PROJECT NAME : Merchandise Program
CUSTOMER:



DRAWING TITLE: Conduit View
CREATED BY:
DATE:
REVISION NO.:

PRODUCT NAME:
ReliaGear Switchboard CTO

DRAWING NO:
ITEM NO: RSBM44010CN1BEU
MARKS: 4000A MCB EUSERC N1
QUOTE NO:
SHEET: 3 of 3